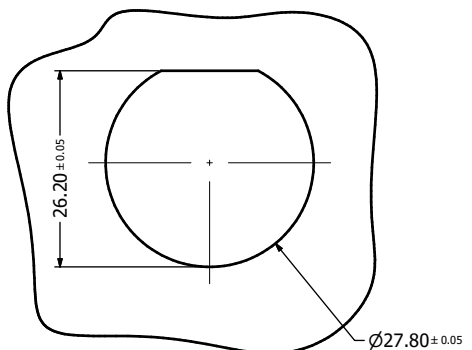
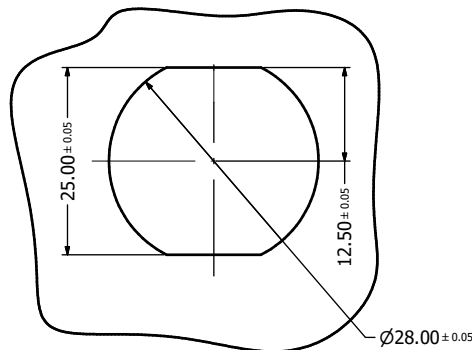


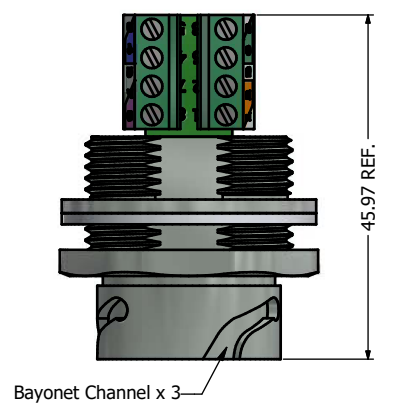
6 5 4 3 2 1



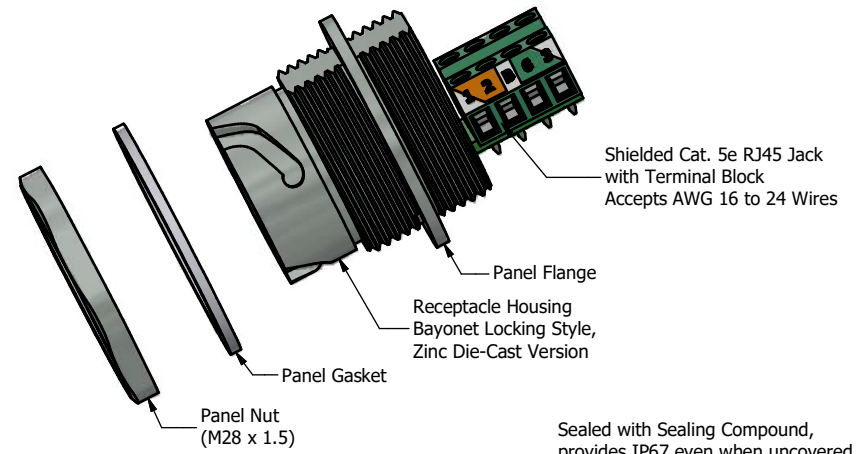
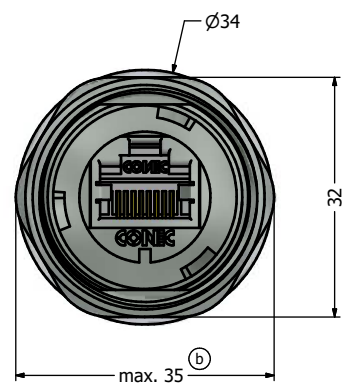
Recommended Single-D Panel Cutout



Recommended Double-D Panel Cutout



Bayonet Channel x 3



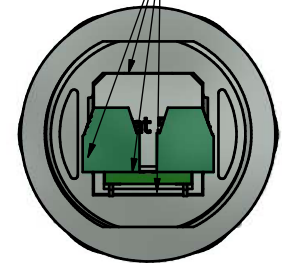
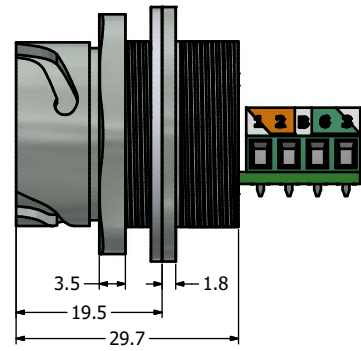
Shielded Cat. 5e RJ45 Jack with Terminal Block Accepts AWG 16 to 24 Wires

Panel Flange
Receptacle Housing Bayonet Locking Style, Zinc Die-Cast Version

Panel Gasket

Panel Nut (M28 x 1.5)

Sealed with Sealing Compound, provides IP67 even when uncovered (For potted version only)



Notes:

- Electrical Specifications:
 - Meets EIA/TIA-568-B.2 Cat. 5e Specification
 - Contact Resistance: 20mOhm max.
 - Insulation Resistance: 500MOhm min. @ 100 VDC
 - Current Rating: 1.2A max. at 25°C
 - Working Voltage: 100 VDC
 - DWV: 1000 VDC/60s Contact to Contact, 1500 VDC/60s Contact to Metal Shell
 - Operating Temperature: -40°C to +85°C
- Material and Finish:
 - Receptacle Housing: Zinc Die-Cast, Nickel Plated
 - Panel Nut: Brass, Finish: Nickel Plated
 - Panel Gasket: Silicon, Color: White
 - Cat.5e RJ45 Jack Metal Shell: Copper Alloy, Nickel Plated
 - Cat.5e RJ45 Jack Plastic Housing: Glass filled PBT UL94 V-0, Color: Black
 - Cat.5e RJ45 Jack Contacts: Phosphor Bronze, Finish: 50u" Gold min. over Nickel
 - PCB: FR-4
 - Terminal Block Insulator: Polyamide, UL94 V-0 Rated
 - Terminal: Brass, Tin Plated
 - Gage Clamp: Brass, Tin Plated
 - M2 Screw: Steel, Zinc Plated
- Connector can be front or rear mounted to a maximum panel thickness of 3.2mm.
- Potted Version must be used, if IP67 required when not capped or mated
- Recommended Mounting Panel Nut Torque is 20 to 25 lb-inch

RoHS compliant

Description	Part Number
Nickel Plated Zinc Die-Cast Version	17-110194
Potted Nickel Plated Zinc Die-Cast Version	17-110204

THIS DRAWING MAY NOT BE COPIED OR REPRODUCED IN ANY MANNER OR ON TO A THIRD PARTY WITHOUT WRITTEN PERMISSION. OWNERSHIP AND COPYRIGHT OF CONEC CORPORATION.	Customer:			Tolerance Unless otherwise specified			Scale: 1.5:1	Dim. in mm
	Name	Title	Approval Date	0 PLC ±0.50	1 PLC ±0.38		Autodesk Inventor	Material: See Notes
				2 PLC ±0.25	3 PLC ±0.10	Title:		Receptacle Assembly Kit with Nickel Plated Zinc Die-Cast Housing with Cat. 5e RJ45 Jack and Terminal Block
				Norm	ANGLES ±3°	Drawing No.: 17K1A347		
	1 x b	A21-04.26	03.11.2021	Bub	2012	Date	Name	Part No.: SEE PART NUMBER TABLE
a	original			Draw.	Oct. 09	Vincent Ke	Sheet 1/1	
Rev	Changes	Date	Name	Appd.	Oct. 09	J. Chaudry		

