

THIS DRAWING IS UNPUBLISHED.

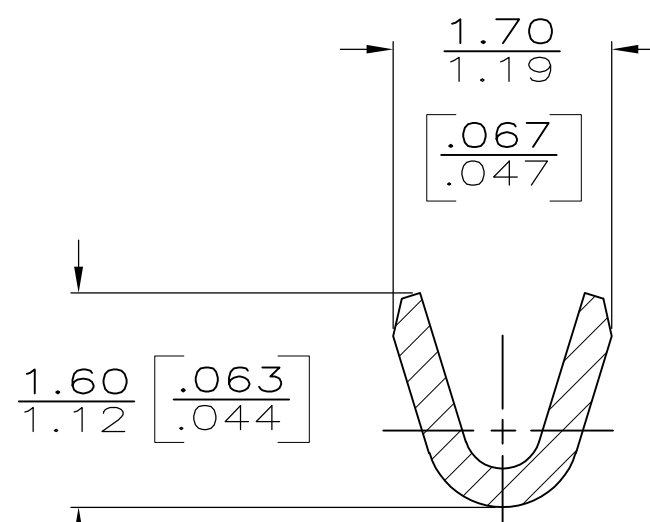
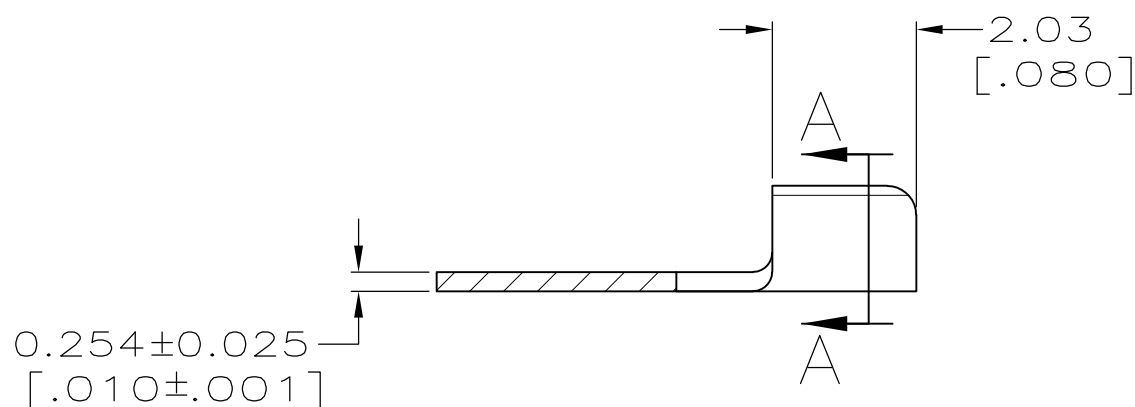
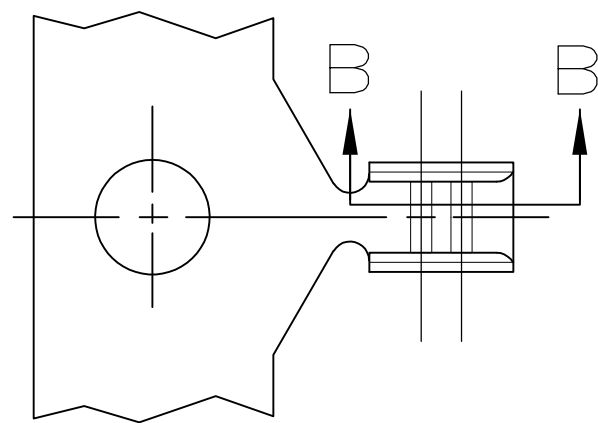
RELEASED FOR PUBLICATION

© COPYRIGHT - By -

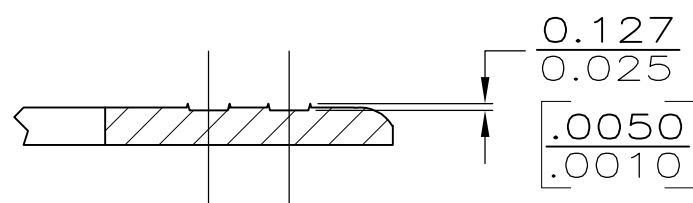
ALL RIGHTS RESERVED.

LOC	DIST	REVISIONS			
P	LTR	DESCRIPTION	DATE	DWN	APVD
AF	50	E1	REVISE PER ECR-14-007779	28MAY2014	GRZ JL

- CONTINUOUS STRIP ON REEL.
- CRIMP WIDTH 1.07 [.042], F (AMPLIVAR TYPE)  
 CRIMP HEIGHT  $\pm 0.05$  [.002] = (TOTAL CMA + 1,600) / 74,000  
 GENERAL APPLICATION GUIDELINES MUST BE FOLLOWED AS SPECIFIED IN CATALOG #82221  
 FOR APPLICATOR INFO CALL, 1-800-722-1111  
 FOR PRODUCT INFO CALL, 1-800-522-6752



SECTION A-A  
SCALE 20:1



SECTION B-B  
SCALE 20:1

OBSOLETE

TIN PLATE	100-300 CMA	63621-2
		63621-1
FINISH	WIRE RANGE	PART NUMBER

THIS DRAWING IS A CONTROLLED DOCUMENT.		DWN P FORTNEY 8/8/91	TE Connectivity			
		CHK MS FEHER 8/8/91				
DIMENSIONS: INCHES		APVD - 8/8/91 D SCHWENK	NAME SPLICE,AMPLIVAR, SUB-MINIATURE			
TOLERANCES UNLESS OTHERWISE SPECIFIED:		PRODUCT SPEC - 8/8/91 R WEAVILL				
MATERIAL: BRASS		FINISH: SEE TABLE	SIZE: A3	CAGE CODE: 00779	DRAWING NO: C-63621	RESTRICTED TO: -
CUSTOMER DRAWING			SCALE: 10:1	SHEET: 1 OF 1	REV: E1	