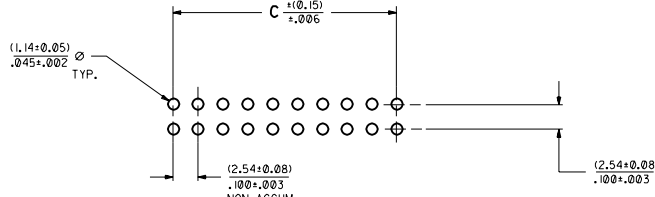
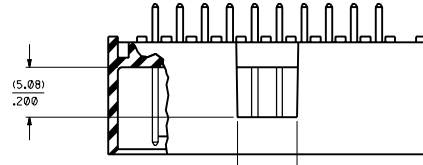
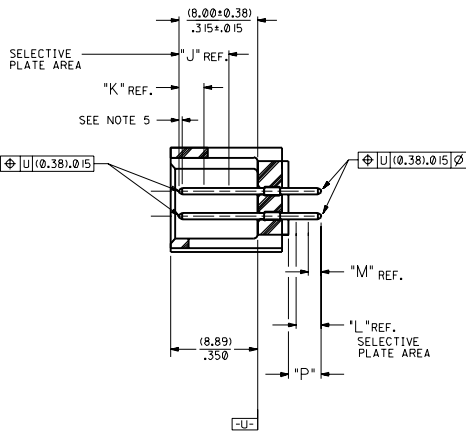
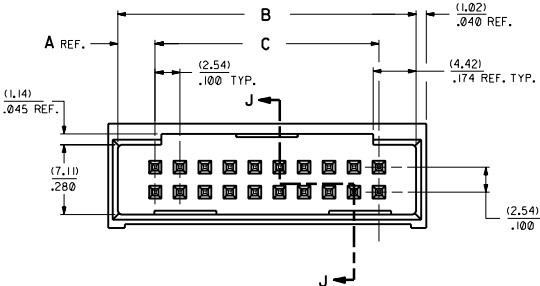


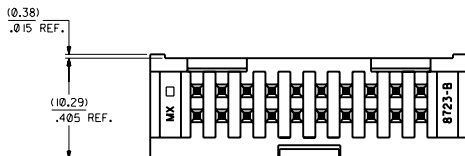
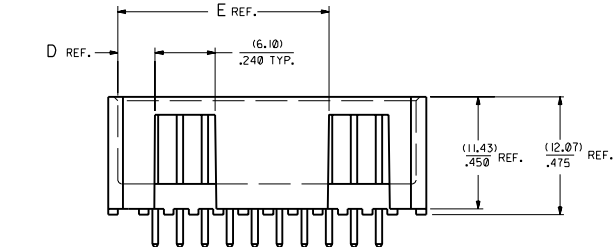
20 19 18 17 16 15 14 13 12 11 10 9 8 7 6 5 4 3 2 1



RECOMMENDED P.C. BOARD HOLE LAYOUT



SECTION J-J



CKT.	DIM. 'A'	DIM. 'B'	DIM. 'C'	DIM. 'D'	DIM. 'E'
06	(3.81) ±.150	(12.70) ±.500	(5.08) ±.200	(3.81) ±.150	
08	(3.81) ±.150	(15.24) ±.600	(7.62) ±.300	(3.81) ±.150	
10	(3.81) ±.150	(17.78) ±.700	(10.16) ±.400	(6.35) ±.250	
12	(3.81) ±.150	(20.32) ±.800	(12.70) ±.500	(6.35) ±.250	
14	(3.81) ±.150	(22.86) ±.900	(15.24) ±.600	(8.89) ±.350	
16	(3.81) ±.150	(25.40) ±.1000	(17.78) ±.700	(8.89) ±.350	
18	(3.81) ±.150	(27.94) ±.1100	(20.32) ±.800	(11.43) ±.450	
20	(3.81) ±.150	(30.48) ±.1200	(22.86) ±.900	(3.81) ±.150	(21.59) ±.850
22	(3.81) ±.150	(33.02) ±.1300	(25.40) ±.1000	(3.81) ±.150	(24.13) ±.950
24	(3.81) ±.150	(35.56) ±.1400	(27.94) ±.1100	(3.81) ±.150	(26.67) ±.1050
26	(3.81) ±.150	(38.10) ±.1500	(30.48) ±.1200	(3.81) ±.150	(29.21) ±.1150
28	(3.81) ±.150	(40.64) ±.1600	(33.02) ±.1300	(3.81) ±.150	(31.75) ±.1250
30	(3.81) ±.150	(43.18) ±.1700	(35.56) ±.1400	(3.81) ±.150	(34.29) ±.1350
32	(3.81) ±.150	(45.72) ±.1800	(38.10) ±.1500	(3.81) ±.150	(36.83) ±.1450
34	(3.81) ±.150	(48.26) ±.1900	(40.64) ±.1600	(3.81) ±.150	(39.37) ±.1550
36	(3.81) ±.150	(50.80) ±.2000	(43.18) ±.1700	(3.81) ±.150	(41.91) ±.1650
38	(3.81) ±.150	(53.34) ±.2100	(45.72) ±.1800	(3.81) ±.150	(44.45) ±.1750
40	(3.81) ±.150	(55.88) ±.2200	(48.26) ±.1900	(3.81) ±.150	(46.99) ±.1850
42	(3.81) ±.150	(58.42) ±.2300	(50.80) ±.2000	(3.81) ±.150	(49.53) ±.1950
44	(3.81) ±.150	(60.96) ±.2400	(53.34) ±.2100	(3.81) ±.150	(52.07) ±.2050
46	(3.81) ±.150	(63.50) ±.2500	(55.88) ±.2200	(3.81) ±.150	(54.61) ±.2150
48	(3.81) ±.150	(66.04) ±.2600	(58.42) ±.2300	(3.81) ±.150	(57.15) ±.2250
50	(3.81) ±.150	(68.58) ±.2700	(60.96) ±.2400	(3.81) ±.150	(59.69) ±.2350
52	(3.81) ±.150	(71.12) ±.2800	(63.50) ±.2500	(3.81) ±.150	(62.23) ±.2450
54	(3.81) ±.150	(73.66) ±.2900	(66.04) ±.2600	(3.81) ±.150	(64.77) ±.2550
56	(3.81) ±.150	(76.20) ±.3000	(68.58) ±.2700	(3.81) ±.150	(67.31) ±.2650
58	(3.81) ±.150	(78.74) ±.3100	(71.12) ±.2800	(3.81) ±.150	(69.85) ±.2750
60	(3.81) ±.150	(81.28) ±.3200	(73.66) ±.2900	(3.81) ±.150	(72.39) ±.2850
62	(3.81) ±.150	(83.82) ±.3300	(76.20) ±.3000	(3.81) ±.150	(74.93) ±.2950
64	(3.81) ±.150	(86.36) ±.3400	(78.74) ±.3100	(3.81) ±.150	(77.47) ±.3050
66	(3.81) ±.150	(88.90) ±.3500	(81.28) ±.3200	(3.81) ±.150	(80.01) ±.3150
68	(3.81) ±.150	(91.44) ±.3600	(83.82) ±.3300	(3.81) ±.150	(82.55) ±.3250
70	(3.81) ±.150	(93.98) ±.3700	(86.36) ±.3400	(3.81) ±.150	(85.09) ±.3350
72	(3.81) ±.150	(96.52) ±.3800	(88.90) ±.3500	(3.81) ±.150	(87.63) ±.3450

NOTES:

- 1- 20 CIRCUIT SIZE SHOWN FOR ILLUSTRATION PURPOSES.
- 2- PIN PUSHOUT FORCE: (17.79 N) 4 LBS.
- 3- PINS MUST MEET SOLDERABILITY SPEC. MIL-STD-202 METHOD 208B.
- 4- FOR CHARTED DIMENSIONS AND ASSEMBLY N.O.S NOT SHOWN ON THIS SHEET - SEE SHEET 4.
- 5- ROW TO ROW PIN HEIGHT VARIATION MUST NOT EXCEED (0.13) ±.005 IN.
- 6- WINDOW NOT AVAILABLE ON 6 AND 8 CIRCUIT SIZE.
- 7- PRODUCT CONFORM TO PS-8723.

MATERIAL:

SHROUDED WAFER: 30% G.F. POLYESTER, 94V-0; COLOR: BLACK.
 PINS: PHOS. BRONZE 510,
 SEE SHEET 4 FOR FINISHES.

ASSEMBLY STYLES "C" AND "D"

R2	SEE SHEET 1
R	SEE SHEET 1
P	SEE SHEET 1
O	SEE SHEET 1
N	SEE SHEET 1

DIMENSIONS SHOWN IN METRIC UNLESS OTHERWISE SPECIFIED TO DIMENSIONS INDICATED BY "IN"

PLATE	±.005	---
PLATE	±.01	±.013
PLATE	---	±.025

DATE: 10/15/82
 SCALE: 4:1

MFG. | SH. | REV. | LTR. | REVISIONS

REVISE ONLY ON CAD SYSTEM

TITLE: SALES ASSEMBLY
 WAFER-STRAIGHT MT. FULLY SHROUDED
 .100 GRID-FOR USE W/ .025 SQ. PINS
 WITH .150 END WALLS

MOLEX INCORPORATED
 SHEET NO. 3
 DATE: 92/07/17

SEE CHART SDA-8723-*****

DA D

NO. OF CKTS	TIN		TIN		15 GOLD		15 GOLD		30 GOLD		30 GOLD		50 GOLD		50 GOLD		TIN		30 GOLD	
	EDP NUMBER	ENC NUMBER	EDP NUMBER	ENC NUMBER	EDP NUMBER	ENC NUMBER	EDP NUMBER	ENC NUMBER	EDP NUMBER	ENC NUMBER	EDP NUMBER	ENC NUMBER	EDP NUMBER	ENC NUMBER	EDP NUMBER	ENC NUMBER	EDP NUMBER	ENC NUMBER	EDP NUMBER	ENC NUMBER
	06	15-42-6206	A-8723-08C164	15-42-6306	A-8723-08D164	15-29-6206	A-8723-06C571	15-29-6306	A-8723-06D571	15-41-7206	A-8723-06C574	15-41-7306	A-8723-06D574	A-8723-06C596	A-8723-06D596	15-42-6606	A-8723-06G164	15-42-6706	A-8723-06H574	15-42-6806

NO. OF CKTS	TIN		TIN		15 GOLD		15 GOLD		30 GOLD		30 GOLD		50 GOLD		50 GOLD		TIN		30 GOLD	
	EDP NUMBER	ENC NUMBER	EDP NUMBER	ENC NUMBER	EDP NUMBER	ENC NUMBER	EDP NUMBER	ENC NUMBER	EDP NUMBER	ENC NUMBER	EDP NUMBER	ENC NUMBER	EDP NUMBER	ENC NUMBER	EDP NUMBER	ENC NUMBER	EDP NUMBER	ENC NUMBER	EDP NUMBER	ENC NUMBER
	06	15-42-6206	A-8723-08C164	15-42-6306	A-8723-08D164	15-29-6206	A-8723-06C571	15-29-6306	A-8723-06D571	15-41-7206	A-8723-06C574	15-41-7306	A-8723-06D574	A-8723-06C596	A-8723-06D596	15-42-6606	A-8723-06G164	15-42-6706	A-8723-06H574	15-42-6806

DIMENSIONS SHOWN METRIC INCH		REVISE ONLY ON CAD SYSTEM	
UNLESS OTHERWISE SPECIFIED		SALES ASSEMBLY	
TOLERANCES ARE:		WAFER-STRAIGHT MT. FULLY SHROUDED	
FRACTIONS		.100 GRID-FOR USE W/.005 SQ. PINS	
DECIMALS		WITH .150 END WALLS	
ANGLES		MOLLEX INCORPORATED SHEET NO. 4	
DUALY METRIC APPLICABLE MOST		DATE 9/20/17	
REMAIN WITH DIMENSIONS		PART NO. 6832	
SEE CHART		SDA-8723-*****	
SCALE 1:1		THIS DRAWING CONTAINS INFORMATION THAT IS PROPRIETARY TO MOLEX INC. AND IS NOT TO BE REPRODUCED OR TRANSMITTED IN ANY FORM OR BY ANY MEANS, ELECTRONIC OR MECHANICAL, INCLUDING PHOTOCOPYING, RECORDING, OR BY ANY INFORMATION STORAGE AND RETRIEVAL SYSTEM.	
LTR.	REVISIONS	LTR.	REVISIONS