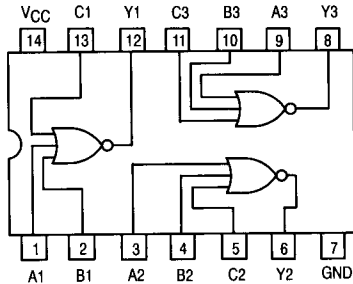




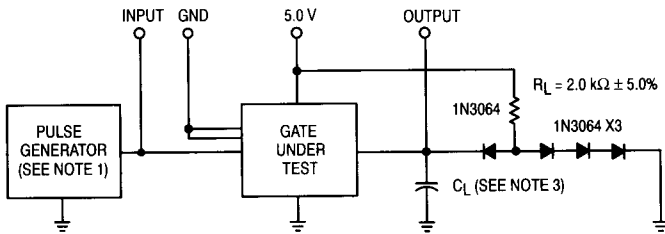
Triple 3-Input Positive NOR Gate

ELECTRICALLY TESTED PER:
MIL-M-38510/30302

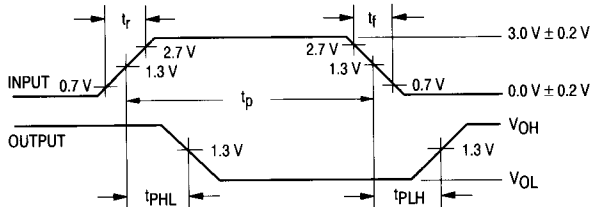
LOGIC DIAGRAM



AC TEST CIRCUIT



WAVEFORMS



NOTES:

- Pulse generator has the following characteristics: $t_r \leq 6.0$ ns, $t_f \leq 15$ ns, $PRR \leq 1.0$ MHz, $t_p = 0.5$ μ s and $Z_{OUT} \approx 50$ Ω .
- $C_L = 50$ pF $\pm 10\%$, including scope probe, wiring and stray capacitance, without package in test fixture.
- $R_L = 2.0$ k Ω $\pm 5.0\%$.
- Voltage measurements are to be made with respect to network ground terminal.
- Diodes are 1N3064 or equivalent.
- Terminal condition (pins not designated may be high ≥ 2.0 V, low ≤ 0.7 V, or open).

Military 54LS27



AVAILABLE AS:

- JAN: JM38510/30302BXA
- SMD: N/A
- 883: 54LS27/BXAJC

X = CASE OUTLINE AS FOLLOWS:
PACKAGE: CERDIP: C
CERFLAT: D
LCC: 2

THE LETTER "M" APPEARS
BEFORE THE / ON LCC.

PIN ASSIGNMENTS

FUNCT.	DIL 632-08	FLATS 717-04	LCC 756A-02	BURN-IN (COND. A)
A1	1	1	2	GND
B1	2	2	3	GND
A2	3	3	4	GND
B2	4	4	6	GND
C2	5	5	8	GND
Y2	6	6	9	VCC
GND	7	7	10	GND
Y3	8	8	12	VCC
A3	9	9	13	GND
B3	10	10	14	GND
C3	11	11	16	GND
Y1	12	12	18	VCC
C1	13	13	19	GND
VCC	14	14	20	VCC

BURN-IN CONDITIONS:
VCC = 5.0 V MIN/6.0 V MAX

TRUTH TABLE

A	B	C	Y
0	0	0	1
0	0	1	0
0	1	0	0
0	1	1	0
1	0	0	0
1	0	1	0
1	1	0	0
1	1	1	0

54LS27

Symbol	Parameter	Limits						Unit	Test Condition (Unless Otherwise Specified)
		+ 25°C		+ 125°C		- 55°C			
		Subgroup 1		Subgroup 2		Subgroup 3			
		Min	Max	Min	Max	Min	Max		
V _{OH}	Logical "1" Output Voltage	2.5		2.5		2.5		V	V _{CC} = 4.5 V, I _{OH} = -400 μA, V _{IL} = 0.7 V, V _{IN} = 0.7 V on other inputs.
V _{OL}	Logical "0" Output Voltage		0.4		0.4		0.4	V	V _{CC} = 4.5 V, I _{OL} = 4.0 mA, V _{IH} = 2.0 V, V _{IN} = 2.0 V on other inputs.
V _{IC}	Input Clamping Voltage		-1.5					V	V _{CC} = 4.5 V, I _{IN} = -18 mA, other inputs are open.
I _{IH1}	Logical "1" Input Current		20		20		20	μA	V _{CC} = 5.5 V, V _{IN} = 2.7 V, other inputs = 0 V.
I _{IH2}	Logical "1" Input Current		100		100		100	μA	V _{CC} = 5.5 V, V _{IN} = 5.5 V, other inputs = 0 V.
I _{IL}	Logical "0" Input Current	-150	-380	-150	-380	-150	-380	μA	V _{CC} = 5.5 V, V _{IN} = 0.4 V, other inputs = 5.5 V.
I _{OS}	Output Short Circuit Current	-15	-100	-15	-100	-15	-100	mA	V _{CC} = 5.5 V, V _{IN} = 0 V (all inputs), V _{OUT} = 0 V.
I _{CCH}	Power Supply Current		4.0		4.0		4.0	mA	V _{CC} = 5.5 V, V _{IN} = 0 V (all inputs).
I _{CCL}	Power Supply Current		6.8		6.8		6.8	mA	V _{CC} = 5.5 V, V _{IN} = 4.5 V (all inputs).
V _{IH}	Logical "1" Input Voltage	2.0		2.0		2.0		V	V _{CC} = 4.5 V.
V _{IL}	Logical "0" Input Voltage		0.7		0.7		0.7	V	V _{CC} = 4.5 V.
	Functional Tests	Subgroup 7		Subgroup 8A		Subgroup 8B			per Truth Table with V _{CC} = 5.0 V, V _{INL} = 0.4 V, and V _{INH} = 2.5 V.

5

Symbol	Parameter	Limits						Unit	Test Condition (Unless Otherwise Specified)
		+ 25°C		+ 125°C		- 55°C			
		Subgroup 9		Subgroup 10		Subgroup 11			
		Min	Max	Min	Max	Min	Max		
t _{PHL} t _{PHL}	Propagation Delay /Data-Output Output High-Low	2.0	16 15	2.0	26 21	2.0	26 21	ns	V _{CC} = 5.0 V, C _L = 50 pF, R _L = 2.0 kΩ. V _{CC} = 5.0 V, C _L = 15 pF, R _L = 2.0 kΩ.
t _{PLH} t _{PLH}	Propagation Delay /Data-Output Output Low-High	2.0	22 15	2.0	30 25	2.0	30 25	ns	V _{CC} = 5.0 V, C _L = 50 pF, R _L = 2.0 kΩ. V _{CC} = 5.0 V, C _L = 15 pF, R _L = 2.0 kΩ.

NOTE:

1. The limits specified for C_L = 15 pF are guaranteed but not tested.