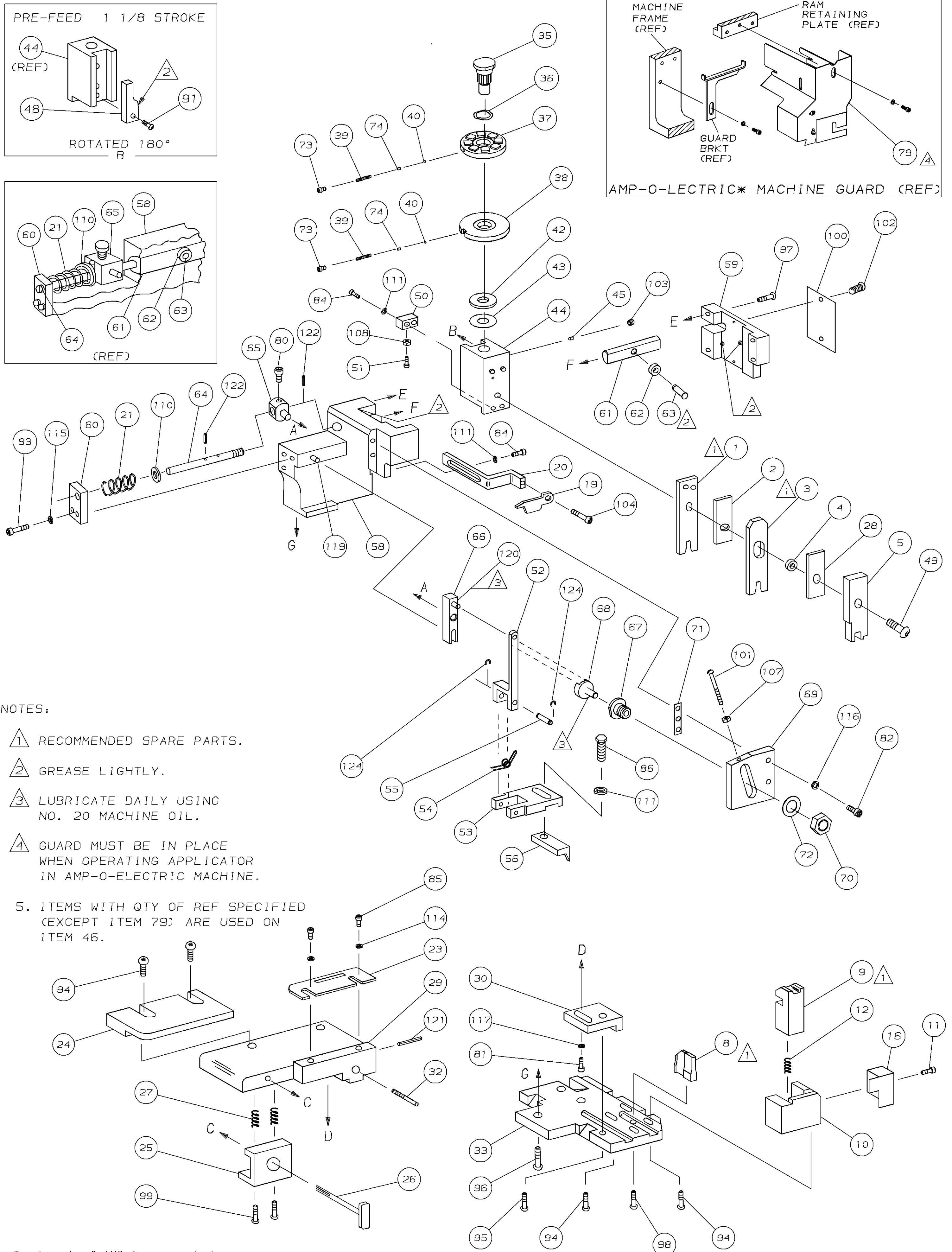
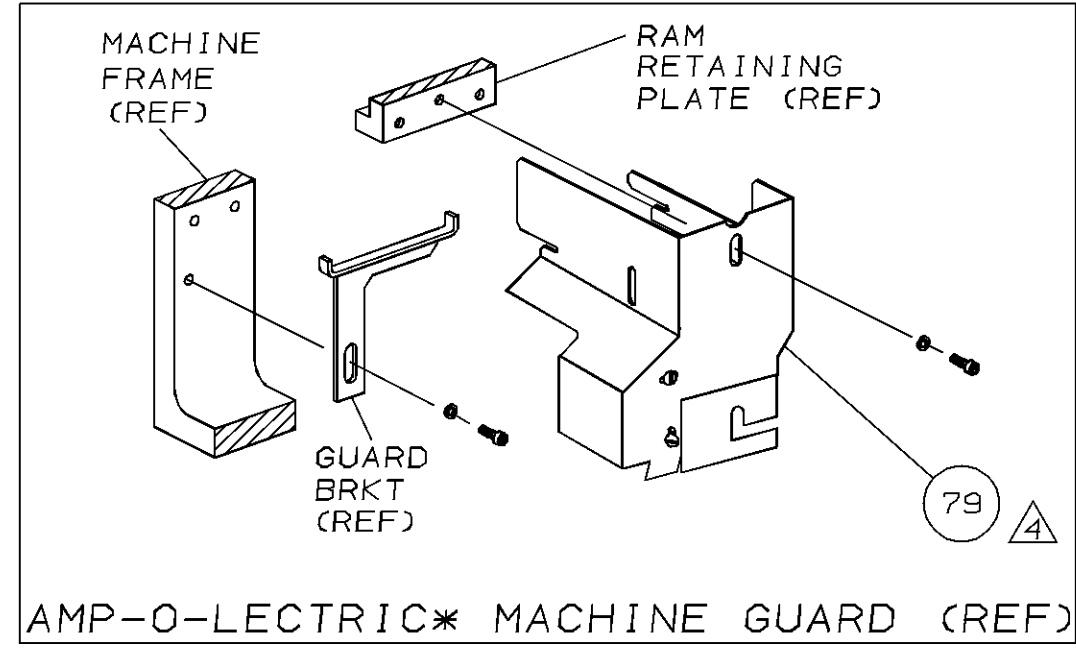
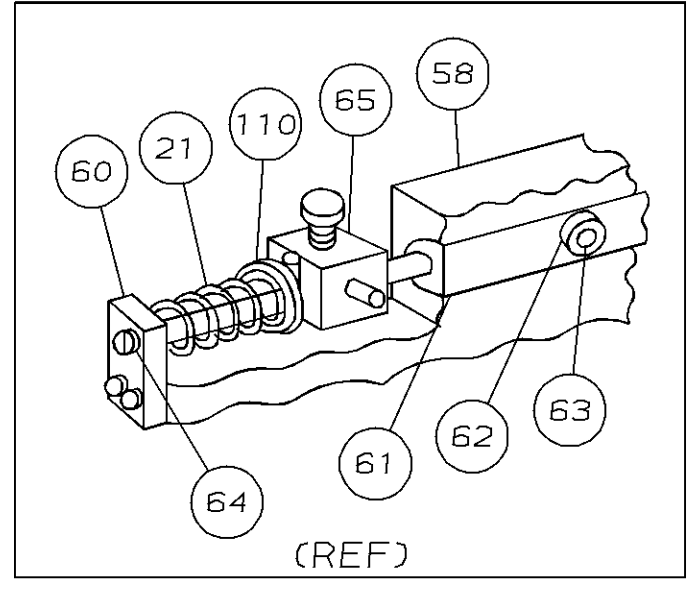
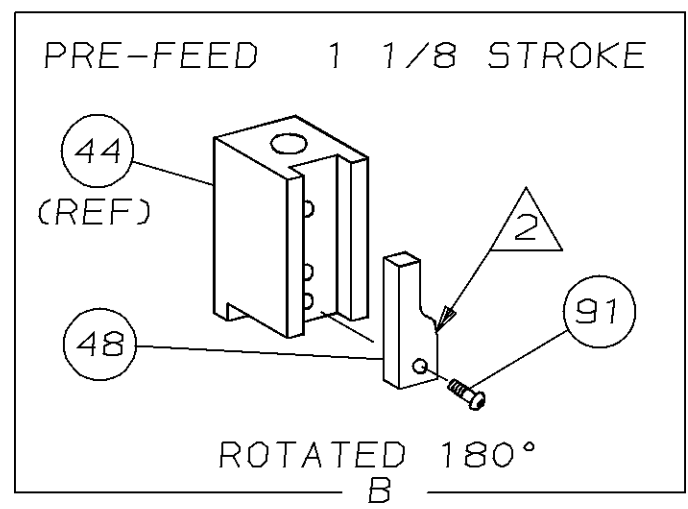


THIS DRAWING IS A CONTROLLED DOCUMENT FOR AMP INCORPORATED. IT IS SUBJECT TO CHANGE AND THE CONTROLLING ENGINEERING ORGANIZATION SHOULD BE CONTACTED FOR THE LATEST REVISION.



- NOTES:
- 1 RECOMMENDED SPARE PARTS.
 - 2 GREASE LIGHTLY.
 - 3 LUBRICATE DAILY USING NO. 20 MACHINE OIL.
 - 4 GUARD MUST BE IN PLACE WHEN OPERATING APPLICATOR IN AMP-O-ELECTRIC MACHINE.
 - 5. ITEMS WITH QTY OF REF SPECIFIED (EXCEPT ITEM 79) ARE USED ON ITEM 46.

THIS INFORMATION IS CONFIDENTIAL AND IS DISCLOSED TO YOU ON CONDITION THAT NO FURTHER DISCLOSURE IS MADE BY YOU TO OTHER THAN AMP PERSONNEL WITHOUT WRITTEN AUTHORIZATION FROM AMP INCORPORATED, HARRISBURG, PA.

DIST 66 * Trademark of AMP Incorporated

REF	QTY	PART NO	DESCRIPTION	ITEM NO
21045-3	1	RING, RET "C" (.187ø) FEED FINGER	124	REF 454220-1 CAP, HOUSING
5-21028-1	1	PIN, SLT SPR (.125øx.50) ADJ ROD	123	REF 454485-1 HOUSING
4-21028-0	1	PIN, SLT SPR (.093øx.75) ST GUIDE PL	121	690542-2 PAWL, FEED
1-21030-1	1	PIN, DOWEL (.187øx.50) LEVER	120	REF 240624-1 PIN, FEED FINGER
1-21030-6	1	PIN, DOWEL (.187øx1.25) HOUSING	119	REF 691499-1 SPRING, FEED FINGER
21024-5	1	WASHER, LOCK (NO. 10) ADJ BLOCK	118	REF 690541-1 FINGER, FEED
21024-5	1	WASHER, LOCK (NO. 10) ADJ PLATE	117	REF 455679-1 LEVER, TERMINAL FEED ARM
21024-5	1	WASHER, LOCK (NO. 10) FEED GUIDE ROD	116	REF 811242-2 BUMPER, HOLDDOWN
21024-2	1	WASHER, LOCK (NO. 4) FRONT STRIP GUIDE	115	REF 690753-1 SPACER, TONKER
	1		114	7-21002-9 BOLT, CRIMPER (5/16-24x1.00)
	1		113	REF 690602-5 CAM, PRE-FEED 1 1/8 STROKE
	1		112	
21024-4	1	WASHER, LOCK (NO. 8) STRIPPER	111	REF 459456-1 APPLICATOR, BASIC (SUBASSY)
21899-4	1	WASHER, FLAT (5/16 DIA) SCREW ADJ	110	REF 690191-1 PLUG, NYLON
	1		109	REF 455673-3 RAM
21018-5	1	NUT, HEX (NO. 6) HOLDDOWN	108	REF 690125-1 WASHER, LAMINATED
21018-5	1	NUT, HEX (6-32) FEED ADJ	107	REF 690124-1 WASHER, RAM
	1		106	
	2		105	23241-6 BALL, STEEL
456567-1	1	SCR, SHLD (.188øx.125) STRIPPER	104	REF 690170-1 SPRING, COMPRESSION
21009-2	1	SCR, SKT SET (1/4-20x.25) LOC-WEL) RAM	103	REF 690142-1 DISC, INSULATION
21017-2	1	SCR, DRIVE (#2x.19) ID PLATE	102	REF 5-690692--6 DISC, WIRE
6-23715-5	1	SCR, PAN HD (6-32x1.50) FEED ADJ	101	REF 22480-5 WASHER, SPRING
461264-1	1	PLATE, IDENTIFICATION	100	REF 690212-1 POST, RAM
3-21002-0	1	SCR, BHC (10-32x.88) DRAG	99	
22733-8	1	SCR, BHC (8-32x.38) LOC-WEL) ANVIL	98	REF 455675-1 PLATE, BASE
2-21002-9	1	SCR, BHC (10-32x.75) CAP	97	REF 690432-3 SCREW, ADJUSTMENT
2-22733-8	1	SCR, BHC (1/4-20x.62) HOUSING	96	
2-21002-7	1	SCR, BHC (10-32x.50) SG ADJ BLOCK	95	REF 455689-1 BLOCK, STRIP GUIDE ADJ
2-21002-2	1	SCR, BHC (8-32x.50) SHEAR	94	REF 2-455671-5 PLATE, STRIP GUIDE
	1		93	REF 1-455888-0 SPACER, FRONT SHEAR DEP
	2		92	REF 1-22284-0 SPRING, DRAG
1-21002-7	1	SCR, BHC (6-32x.38) CAM	91	REF 690546-1 LEVER, DRAG RELEASE
	1		90	REF 240792-1 DRAG, STOCK
	1		89	REF 6-690504-4 GUIDE, STRIP (REAR)
	1		88	REF 690438-1 GUIDE, STRIP (FRONT)
	1		87	
2-22603-0	1	SCR, HEX HEAD (8-32x.31) FEED FINGER	86	REF 4-22284-9 SPRING, FEED RETURN
1-21000-3	1	SCR, SKT CAP (4-40x.25) F STRIP GUIDE	85	REF 458950-1 ARM, STRIPPER
2-21000-7	1	SCR, SKT CAP (8-32x.50) STRIPPER	84	REF 458949-2 STRIPPER
3-21000-7	1	SCR, SKT CAP (10-32x.75) FEED ROD GD	83	
3-21000-6	1	SCR, SKT CAP (10-32x.62) FEED ADJ BLK	82	
3-21000-4	1	SCR, SKT CAP (10-32x.38) SG ADJ BLK	81	REF 691667-1 GUARD, CHIP (FRONT)
3-21000-4	1	SCR, SKT CAP (10-32x.38) PIVOT BLOCK	80	
455749-1	1	GUARD, WINDOW	79	
	1		78	
	1		77	5-22280-0 SPRING, SHEAR
	1		76	690461-1 STOP, SHEAR
	1		75	690459-1 HOLDER, SHEAR (FRONT)
	1		74	462006-1 SHEAR, FLOAT (FRONT)
	1		73	4-683403-1 ANVIL
	1		72	
	1		71	
690603-1	2	SPRING, ASSIST	70	REF 2-455889-9 DEPRESSOR, SHEAR (FRONT)
23030-1	1	SCR, SKT CAP (6-32x.25) CP DISC	69	REF 2-238011-0 SPACER, TUBULAR
458109-1	1	WASHER, SPECIAL	68	REF 2-683453-0 CRIMPER, INSULATION
690517-1	1	SPACER	67	REF 455888-1 SPACER, CRIMPER
22594-8	1	NUT, HEX	66	REF 2-456402-9 CRIMPER, WIRE
240628-1	1	PLATE, ADJUSTMENT	65	
240626-1	1	SHAFT, PIVOT	64	
240633-1	1	BUSHING	63	
455680-1	1	LEVER, INTERMEDIATE	62	
240629-1	1	BLOCK, PIVOT	61	
240632-2	1	SCREW, ADJUSTMENT FEED ROD	60	
240659-3	1	PIN, CAM ROLLER	59	
240658-1	1	ROLLER, CAM	58	
454398-2	1	ROD, FEED	57	
454178-1	1	GUIDE, FEED ROD	56	
			55	
			54	
			53	
			52	
			51	
			50	
			49	
			48	
			47	
			46	
			45	
			44	
			43	
			42	
			41	
			40	
			39	
			38	
			37	
			36	
			35	
			34	
			33	
			32	
			31	
			30	
			29	
			28	
			27	
			26	
			25	
			24	
			23	
			22	
			21	
			20	
			19	
			18	
			17	
			16	
			15	
			14	
			13	
			12	
			11	
			10	
			9	
			8	
			7	
			6	
			5	
			4	
			3	
			2	
			1	

REMARKS	NO	REV
APPL USED ON MACHINE PART NO	MACH SERIAL NO	DISTRIBUTION
CUSTOMER NAME	APPL SERIAL NO	ORIGINAL
ADDRESS	PURCHASE ORDER	CUSTOMER COPY
CITY	ENG APP	FIELD ENG COPY

CRIMPING DATA				APPLICATOR WILL APPLY	
PAD LTR	CRIMP HEIGHT	WIRE SIZE	WIRE STRIP LENGTH	171610	
A	.033	22			
B	.030	24			
C	.028	26			
D	NOT USED				
CRIMP	SIZE	TYPE	FEED	APPL INST	
WIRE	.055	F	.236	AI 8040	
INSUL	.070	F			
WIRE RANGE	INSULATION RANGE	MACHINE NO			
26-22	.039-.075	565435-5			

SET UP GAGE	10-1	458637-1	L1310	AMP INCORPORATED
CHK	8-20-88	REL	8-20-88	Harrisburg, Pa.
DATE	8/19/88	APP	8-20-88	
BY	EPHMAN	BY	WOLFE	
D	ECN 0150-5818-94	TR	12-94	LOC A
C	EC 0150-5114-94	TR	1/94	NO 567291-2
B	EC-A-221989	AC	11-89	REV D
A	EC A-193489	AC	11-89	