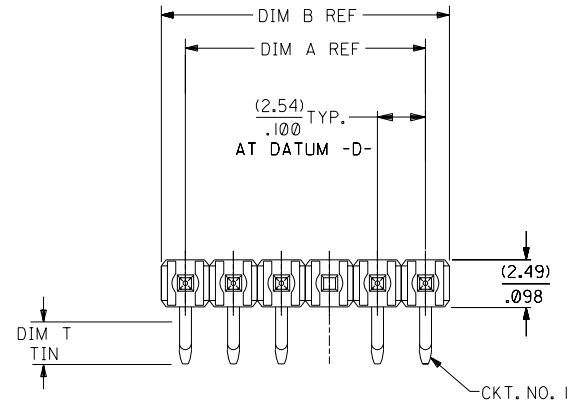
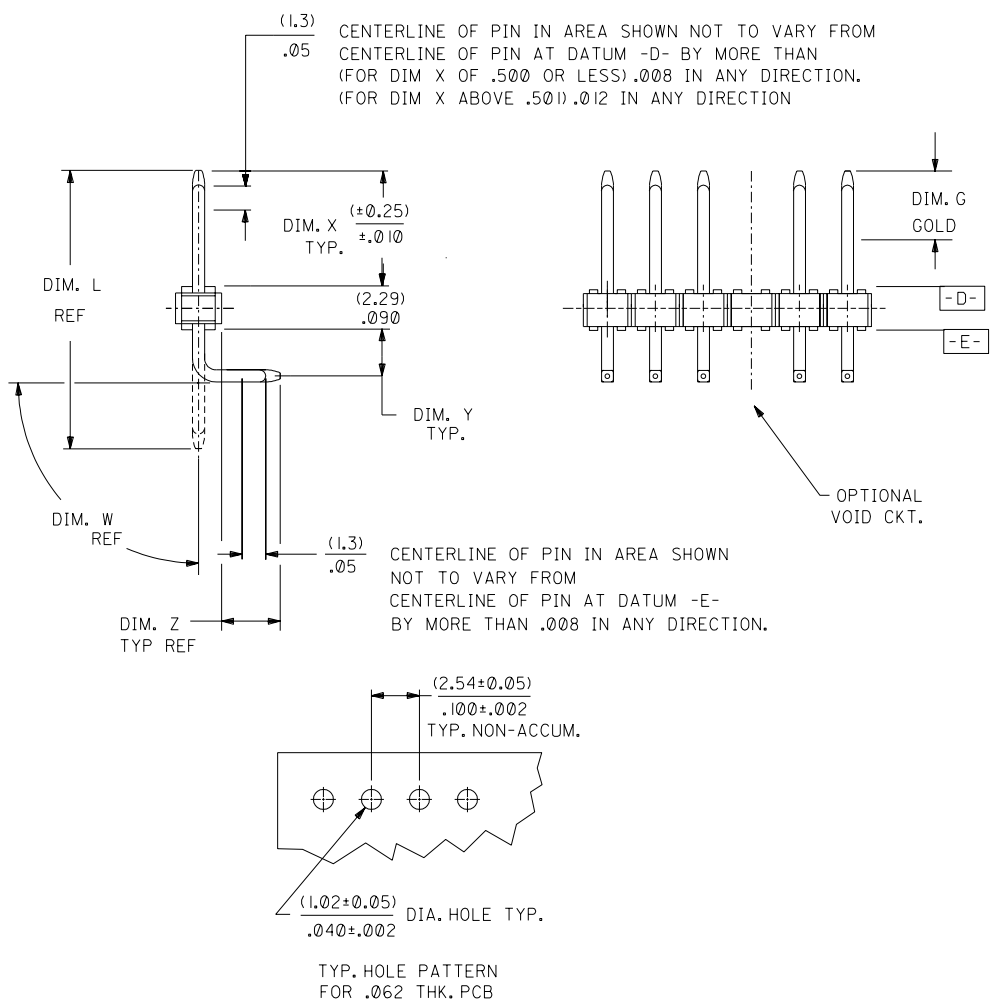


NO. OF CKTS.	DIM. A	DIM. B
2	.100 (2.54)	.200 (5.08)
3	.200 (5.08)	.300 (7.62)
4	.300 (7.62)	.400 (10.16)
5	.400 (10.16)	.500 (12.70)
6	.500 (12.70)	.600 (15.24)
7	.600 (15.24)	.700 (17.78)
8	.700 (17.78)	.800 (20.32)
9	.800 (20.32)	.900 (22.86)
10	.900 (22.86)	1.000 (25.40)
11	1.000 (25.40)	1.100 (27.94)
12	1.100 (27.94)	1.200 (30.48)
13	1.200 (30.48)	1.300 (33.02)
14	1.300 (33.02)	1.400 (35.56)
15	1.400 (35.56)	1.500 (38.10)
16	1.500 (38.10)	1.600 (40.64)
17	1.600 (40.64)	1.700 (43.18)
18	1.700 (43.18)	1.800 (45.72)
19	1.800 (45.72)	1.900 (48.26)
20	1.900 (48.26)	2.000 (50.80)
21	2.000 (50.80)	2.100 (53.34)
22	2.100 (53.34)	2.200 (55.88)
23	2.200 (55.88)	2.300 (58.42)
24	2.300 (58.42)	2.400 (60.96)
25	2.400 (60.96)	2.500 (63.50)
26	2.500 (63.50)	2.600 (66.04)
27	2.600 (66.04)	2.700 (68.58)
28	2.700 (68.58)	2.800 (71.12)
29	2.800 (71.12)	2.900 (73.66)
30	2.900 (73.66)	3.000 (76.20)
31	3.000 (76.20)	3.100 (78.74)
32	3.100 (78.74)	3.200 (81.28)
33	3.200 (81.28)	3.300 (83.82)
34	3.300 (83.82)	3.400 (86.36)
35	3.400 (86.36)	3.500 (88.90)
36	3.500 (88.90)	3.600 (91.44)



- NOTES:
1. MATERIAL: 30% GLASS FILLED NYLON COLOR: BLACK
 2. PIN PUSHOUT 3 LBS. MIN.
 3. SOLDERABILITY PER ES-152.
 4. PLATING: (159) PREPLATED BRIGHT TIN/LEAD (90/10) .000150 MIN (567) SELECT GOLD .000015 MIN SELECT TIN-LEAD .000100 MIN OVER .000050 MIN NICKEL. (569) SELECT GOLD .000030 MIN SELECT TIN-LEAD .000100 MIN OVER .000050 MIN NICKEL.
 5. INDIVIDUAL CIRCUIT SIZES ARE CUT FROM 36 CIRCUIT PARTS.
 6. PRODUCT SPECIFICATION: PS-10-07



REV.	DATE	BY	CHK'D.	APP'D.
T8	06/03/2003	ELHAG		
T7	04/14/2003	ELHAG		
T6	02/13/2003	ELHAG		
T5	12/6/2002	SAMIEC		
T4	10/7/2002	SAMIEC		

DIMENSIONS SHOWN (METRIC) INCH		UNLESS OTHERWISE SPECIFIED TOLERANCES: ANGULAR ± 1/2°	
3 PLACES ± .010	INCH	± 0.25	METRIC
2 PLACES ± .014	INCH	± 0.36	METRIC
1 PLACE ± .014	INCH	± 0.36	METRIC
DRAFT WHERE APPLICABLE MUST REMAIN WITHIN DIMENSIONS			
DRWG. BY: JJS	CHK'D. BY: PATEL	FILE NAME: S42377X1	SCALE: :
APP'D. BY: LENZ	SCALE: :	THIS DRAWING CONTAINS INFORMATION THAT IS PROPRIETARY TO MOLEX INC. AND SHOULD NOT BE USED WITHOUT WRITTEN PERMISSION.	DIV. C
TITLE: WAFER ASSY., SINGLE ROW .100 @ BREAKAWAY 42377 SERIES DWG		SHEET NO. 1 OF 6 DATE 09/15/88	
PART NO. SEE CHART		DRWG. NO. SDA-42377	

42377

42377

