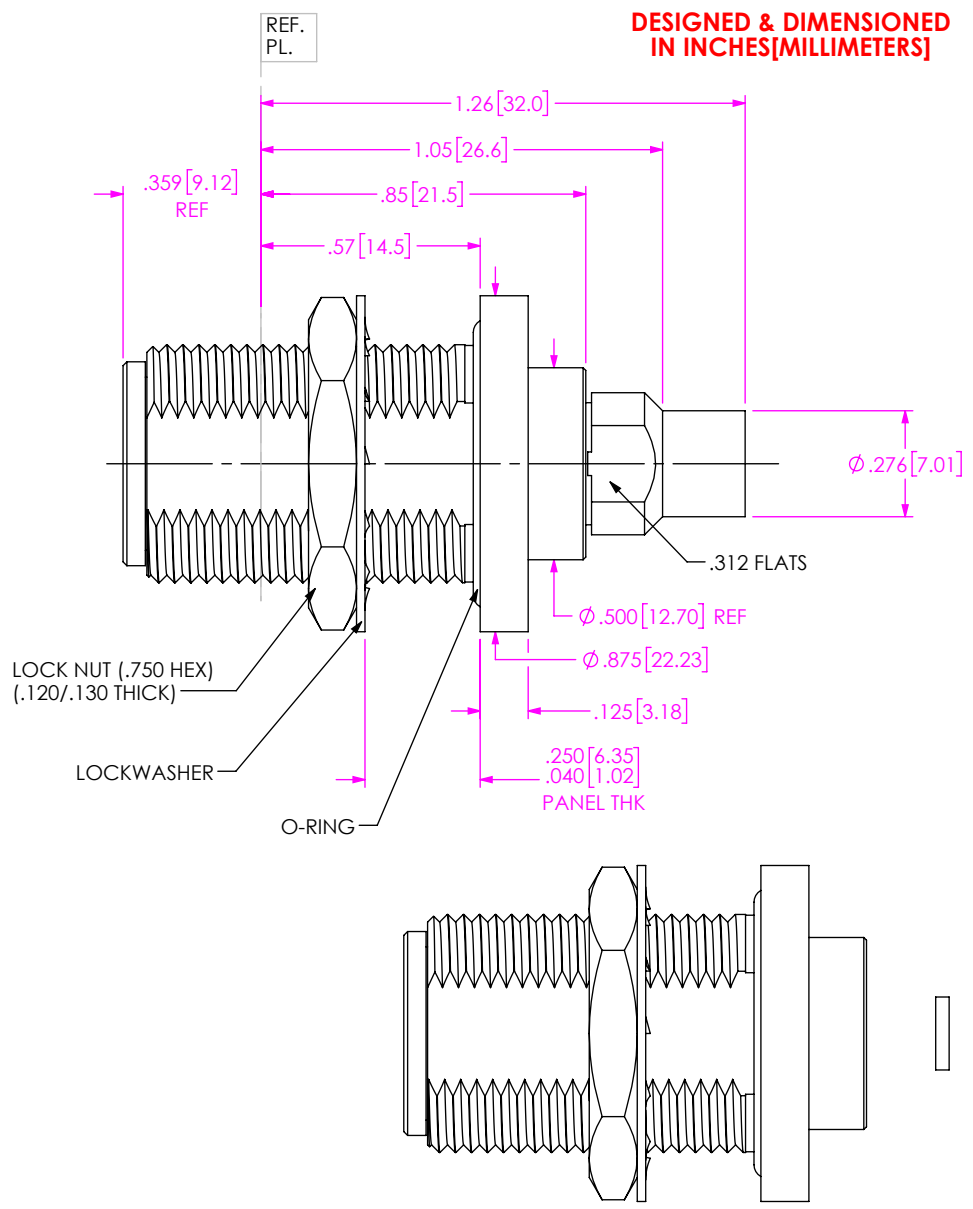


DO NOT SCALE FROM THIS PRINT

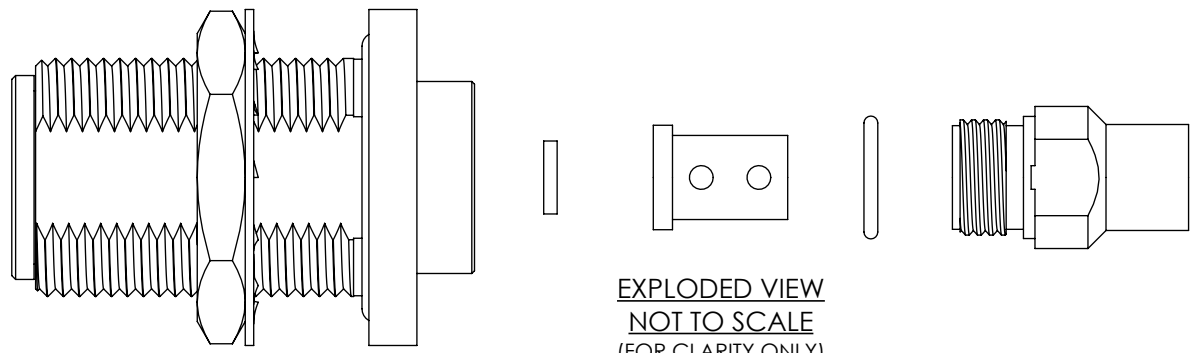
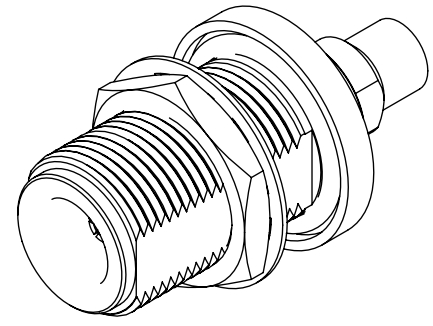
DESIGNED & DIMENSIONED IN INCHES[MILLIMETERS]



PRF06-J-C-EP-142-BS

SERIES -06: NTPE
 GENDER -J: JACK
 TYPE -C: CABLE
 FINISH -EP: 50µ" EXTRA HEAVY GOLD CENTER CONTACT, PASSIVATED


TERMINATION -S: SOLDER CLAMP
 ORIENTATION -B: BULKHEAD
 CABLE TYPE -142: HARBOUR LL142



NOTES:

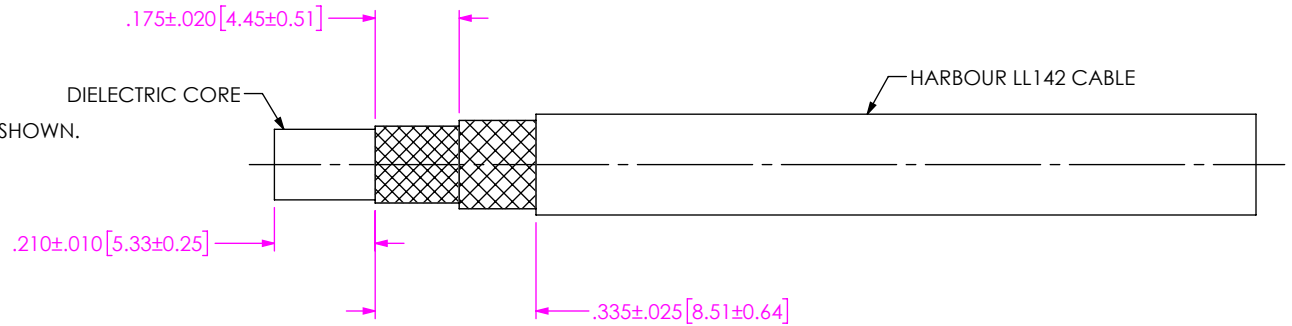
- MATERIAL:
 BODY, BUSHING, CLAMP NUT, LOCK WASHER, JAM NUT: STAINLESS STEEL
 CONTACT: BERYLLIUM COPPER
 SOLDER FERRULE: BRASS ALLOY
 BEADS: PEI
 O-RINGS: SILICONE RUBBER
- FINISH:
 BODY, BUSHING, CLAMP NUT, LOCK WASHER, JAM NUT: PASSIVATED
 CONTACT, SOLDER FERRULE: 50µ" MIN. GOLD OVER 50µ" MIN. NICKEL PLATE
- PCI P/N: 3282

F:\DWG\MISC\MKTG\PRF06-J-C-EP-142-BS-MKT.SLDDRW

UNLESS OTHERWISE SPECIFIED, DIMENSIONS ARE IN INCHES. TOLERANCES ARE: DECIMALS ANGLES .XX: ±.01[0.3] .XXX: ±.005[0.13] .XXXX: ±.0005[0.013]	* PROPRIETARY NOTE * THIS DOCUMENT CONTAINS CONFIDENTIAL AND PROPRIETARY INFORMATION AND ALL DESIGN, MANUFACTURING, REPRODUCTION, USE, PATENT RIGHTS AND SALES RIGHTS ARE EXPRESSLY RESERVED BY SAMTEC, INC. THIS DOCUMENT SHALL NOT BE DISCLOSED, IN WHOLE OR PART, TO ANY UNAUTHORIZED PERSON OR ENTITY NOR REPRODUCED, TRANSFERRED OR INCORPORATED IN ANY OTHER PROJECT IN ANY MANNER WITHOUT THE EXPRESS WRITTEN CONSENT OF SAMTEC, INC.	 520 PARK EAST BLVD. NEW ALBANY, IN 47150 PHONE: 812-944-6733 FAX: 812-948-5047 e-Mail info@SAMTEC.com code 55322	
	DO NOT SCALE DRAWING SHEET SCALE: 2:1		DESCRIPTION: TYPE N BULKHEAD JACK. SOLDER CLAMP FOR HARBOUR LL142 CABLE
	DWG. NO. PRF06-J-C-EP-142-BS		BY: EVE L 05/18/2019 SHEET 1 OF 3

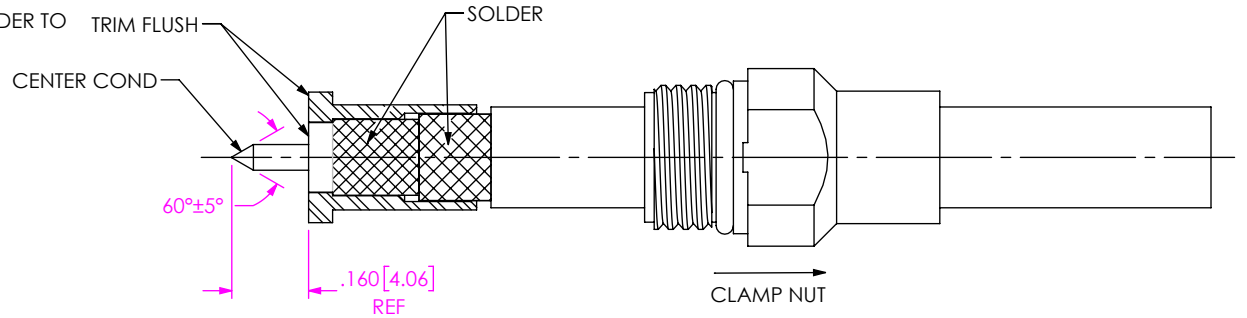
CABLE APPLICATION VIEWS

1A. TRIM CABLE TO EXPOSE DIELECTRIC CORE AND BRAIDS AS SHOWN.



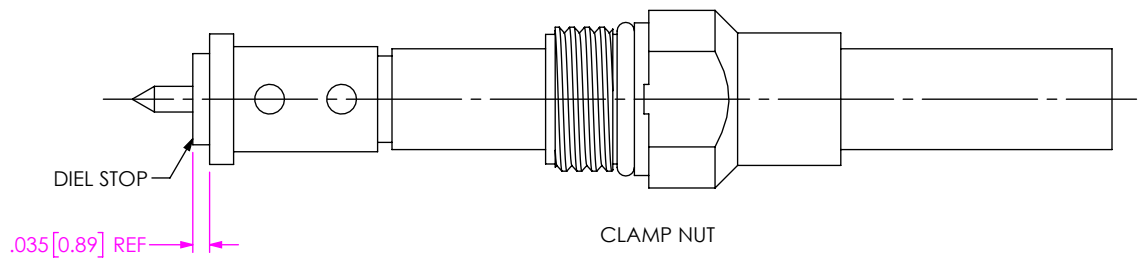
IN-PROCESS VIEW 1

2A. SLIDE CLAMP NUT OVER CABLE AS SHOWN.
 2B. INSERT CABLE INTO FERRULE UNTIL INNER BRAID SEATS AND SOLDER TO FERRULE WHERE SHOWN.
 2C. TRIM DIELECTRIC CORE FLUSH WITH FACE OF SOLDER FERRULE.
 2D. POINT CENTER CONDUCTOR AS SHOWN.



IN-PROCESS VIEW 2

3A. SLIDE DIELECTRIC STOP ONTO CABLE CENTER CONDUCTOR FLUSH WITH SOLDER FERRULE FACE.



IN-PROCESS VIEW 3

PROPRIETARY NOTE
 THIS DOCUMENT CONTAINS CONFIDENTIAL AND PROPRIETARY INFORMATION AND ALL DESIGN, MANUFACTURING, REPRODUCTION, USE, PATENT RIGHTS AND SALES RIGHTS ARE EXPRESSLY RESERVED BY SAMTEC, INC. THIS DOCUMENT SHALL NOT BE DISCLOSED, IN WHOLE OR PART, TO ANY UNAUTHORIZED PERSON OR ENTITY NOR REPRODUCED, TRANSFERRED OR INCORPORATED IN ANY OTHER PROJECT IN ANY MANNER WITHOUT THE EXPRESS WRITTEN CONSENT OF SAMTEC, INC.



520 PARK EAST BLVD, NEW ALBANY, IN 47150
 PHONE: 812-944-6733 FAX: 812-948-5047
 e-Mail info@SAMTEC.com code 55322

DO NOT SCALE DRAWING

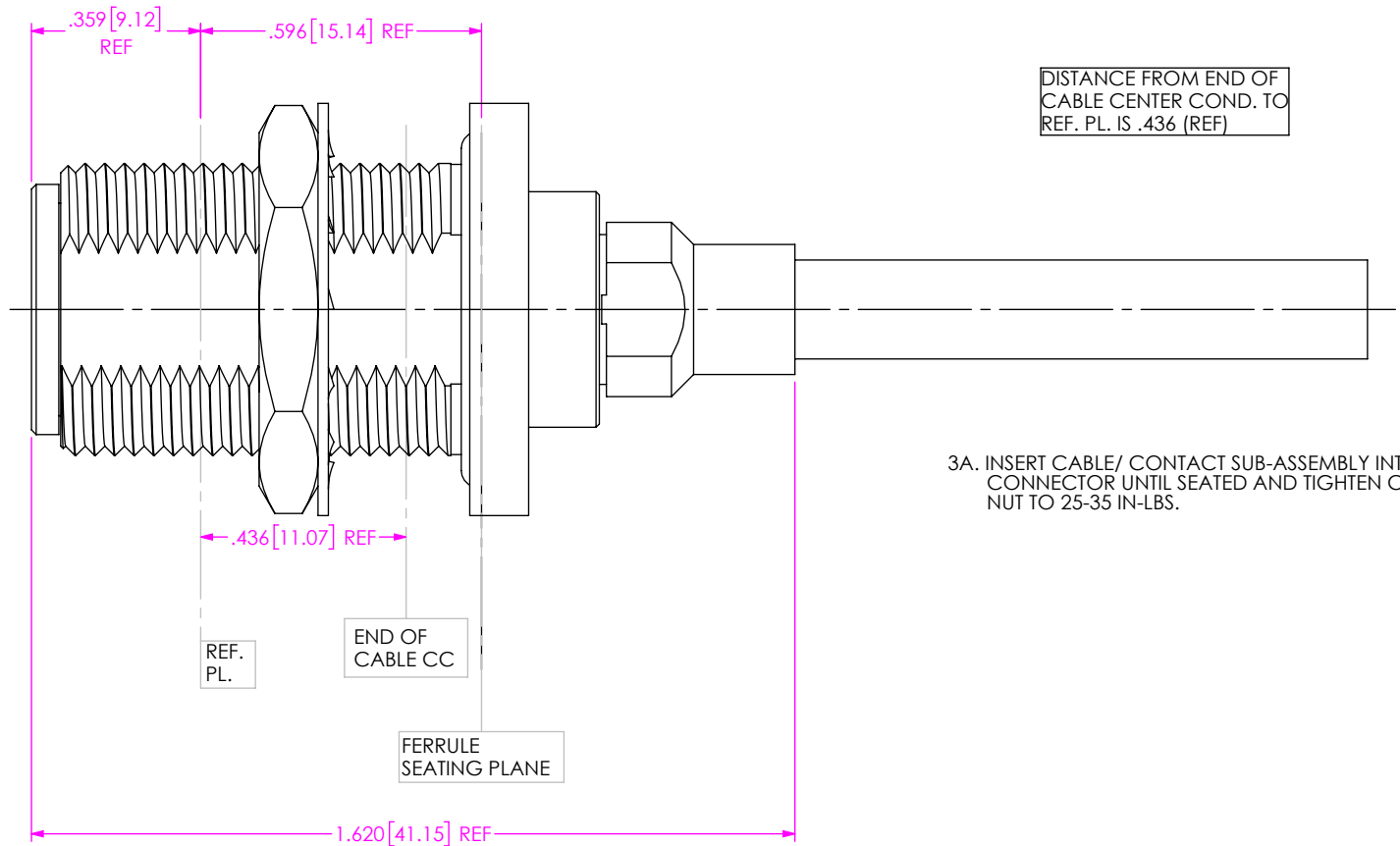
SHEET SCALE: 2.5:1

DESCRIPTION: TYPE N BULKHEAD JACK. SOLDER CLAMP FOR HARBOUR LL142 CABLE

DWG. NO. PRF06-J-C-EP-142-BS

BY: EVE L 05/18/2019 SHEET 2 OF 3

CABLE APPLICATION VIEWS



3A. INSERT CABLE/ CONTACT SUB-ASSEMBLY INTO CONNECTOR UNTIL SEATED AND TIGHTEN CLAMP NUT TO 25-35 IN-LBS.

IN-PROCESS VIEW 4

PROPRIETARY NOTE
 THIS DOCUMENT CONTAINS CONFIDENTIAL AND PROPRIETARY INFORMATION AND ALL DESIGN, MANUFACTURING, REPRODUCTION, USE, PATENT RIGHTS AND SALES RIGHTS ARE EXPRESSLY RESERVED BY SAMTEC, INC. THIS DOCUMENT SHALL NOT BE DISCLOSED, IN WHOLE OR PART, TO ANY UNAUTHORIZED PERSON OR ENTITY NOR REPRODUCED, TRANSFERRED OR INCORPORATED IN ANY OTHER PROJECT IN ANY MANNER WITHOUT THE EXPRESS WRITTEN CONSENT OF SAMTEC, INC.



520 PARK EAST BLVD, NEW ALBANY, IN 47150
 PHONE: 812-944-6733 FAX: 812-948-5047
 e-Mail info@SAMTEC.com code 55322

DO NOT SCALE DRAWING

SHEET SCALE: 2.5:1

DESCRIPTION: TYPE N BULKHEAD JACK, SOLDER CLAMP FOR HARBOUR LL142 CABLE

DWG. NO. PRF06-J-C-EP-142-BS

BY: EVE L 05/18/2019 SHEET 3 OF 3