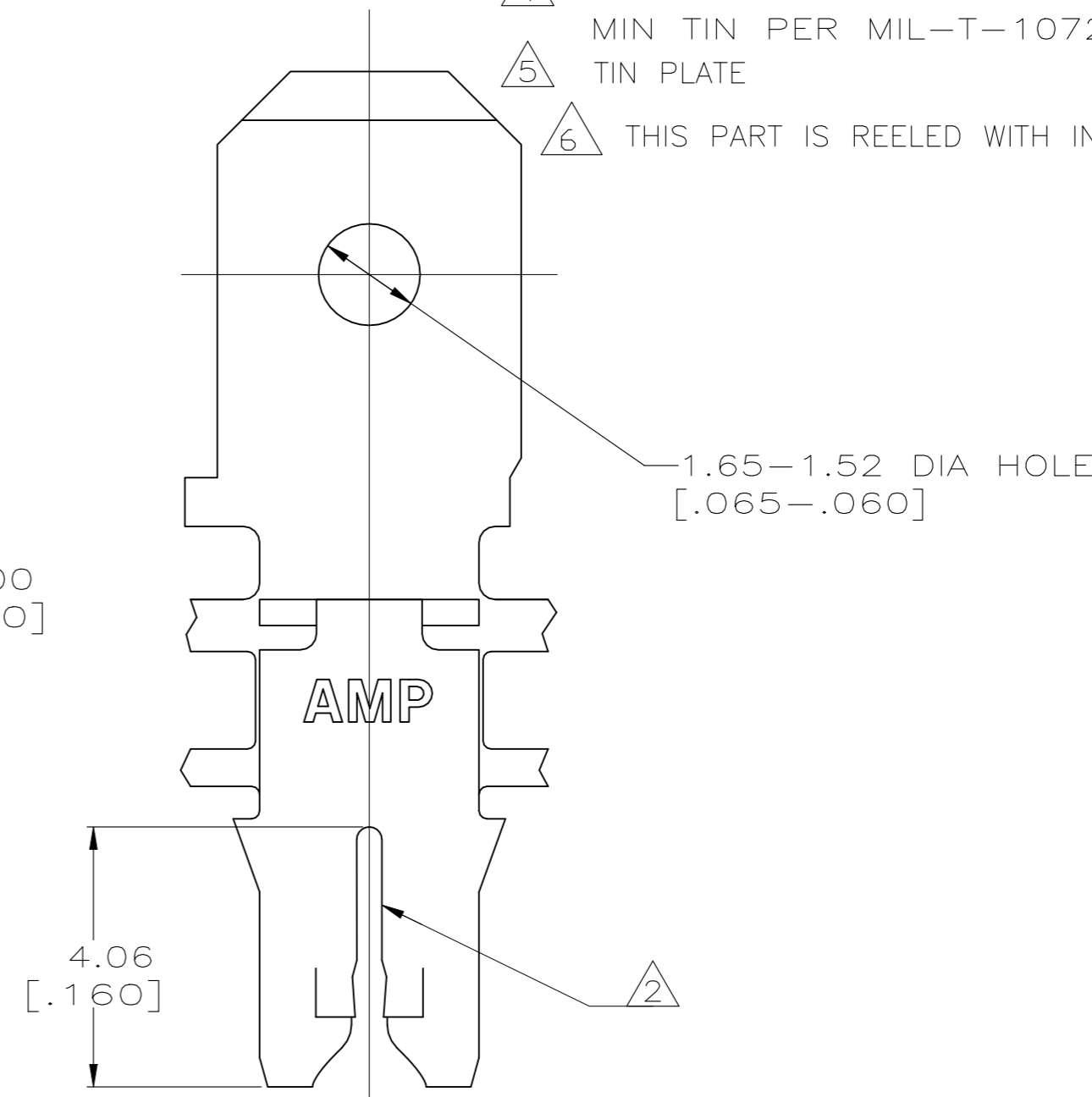
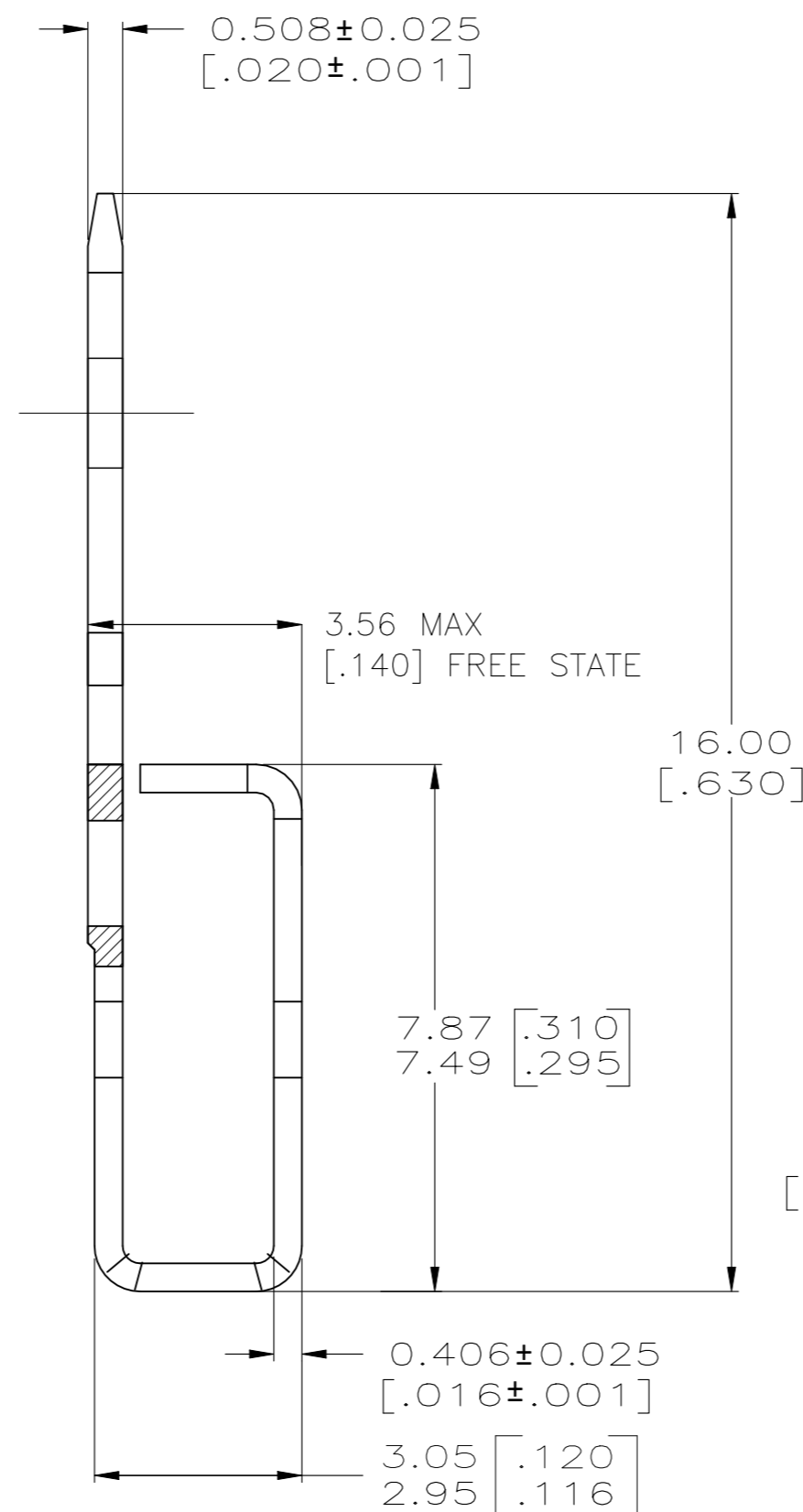
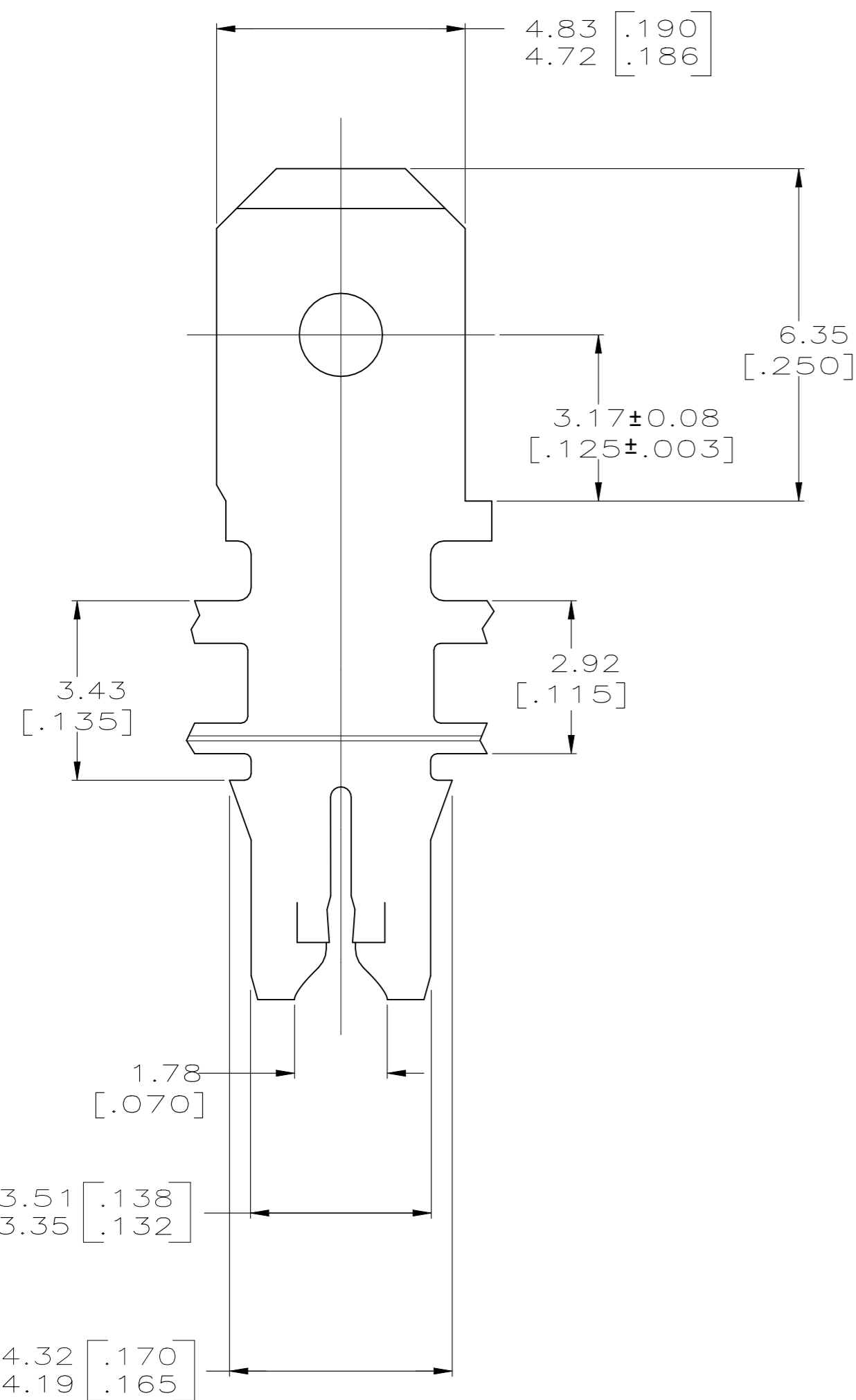
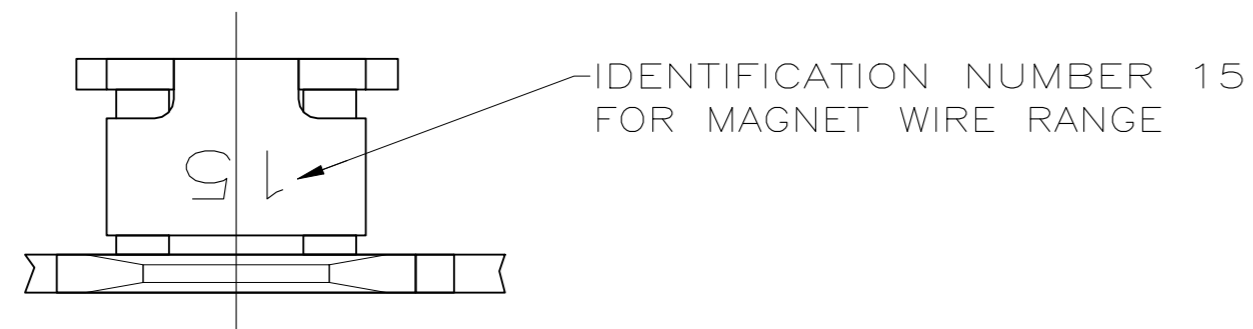


THIS DRAWING IS UNPUBLISHED. RELEASED FOR PUBLICATION
 © COPYRIGHT - By TE CONNECTIVITY ALL RIGHTS RESERVED.

REVISIONS					
P	LTR	DESCRIPTION	DATE	DWN	APVD
E5		REVISED PER ECR-23-178466	16JUN2023	CJH	TD



- 1 CONTINUOUS STRIP ON REELS WITH TERMINALS LOCATED ON 5.59 ± 0.08 [.220±003] CENTERS.
- 2 SLOT TERMINATES A SINGLE MAGNET WIRE ONLY. COPPER RANGE: 0.64-0.81mm [#22-#20] AWG. ALUMINUM RANGE: 0.72-0.91mm [#21-#19] AWG. ALUMINUM WIRE RANGE APPLIES FOR POST-TIN PLATED VERSIONS ONLY.
- 3 AFTER INSERTION INTO PLASTIC HOLDER TAB PORTION MUST BE BENT OVER 45° TO 90° OR POTTED-IN TO PREVENT PULL-OUT WHEN MATING RECEPTACLE IS DISCONNECTED.
- 4 VARNISH RESIST OVER 0.002032 [.000080] MIN TIN PER MIL-T-10727.
- 5 TIN PLATE
- 6 THIS PART IS REELED WITH INTERLAYER PAPER.

5	63663-3	6
5	63663-2	
4	63663-1	
FINISH	PART NO.	

THIS DRAWING IS A CONTROLLED DOCUMENT.		DWN 9/3/92 MICHAEL S. FEHER	TE TE Connectivity	
DIMENSIONS: INCHES		CHK 9/4/92 PHILLIP M. FORTNEY		
TOLERANCES UNLESS OTHERWISE SPECIFIED:		APVD 9/15/92 NELSON E NEFF	NAME	
0 PLC ± -		PRODUCT SPEC	TERMINAL, TAB	
1 PLC ± -		108-2012	4.75 [.187] FASTON™	
2 PLC ± 0.25 [.010]		APPLICATION SPEC	MAG-MATE™	
3 PLC ± -		114-2046	SIZE	CAGE CODE
4 PLC ± -		WEIGHT 0	A2	00779
ANGLES ± -		CUSTOMER DRAWING	SCALE 10:1	SHEET 1 OF 1
MATERIAL BRASS		FINISH SEE TABLE	REV E5	