

ATLANTIC VERSION TERMINATOR INTERFACE ADAPTER table with columns: PART NUMBER, REVISION, DESCRIPTION, FEED TYPE, CONVERT TO, PART NUMBERS REQUIRED

APPLICATOR DATA table with columns: CRIMP, SIZE, TYPE; WIRE, -; INSUL, -; APPLICATOR INSTRUCTIONS 408-10389

TERMINAL DATA: TE TERMINAL TE CRIMP SPECIFICATION table with columns: WIRE STRIP LENGTH, INSULATION DIAMETER RANGE, TERMINAL APPLICATION SPECIFICATION, TERMINALS APPLIED

WIRE SIZE, CRIMP HEIGHT mm [INCH], CRIMP HEIGHT REFERENCE SETTING table with columns: N/A, N/A, 5.0

- RECOMMENDED SPARE PARTS
GREASE BEARING SURFACES LIGHTLY
3. LUBRICATE DAILY PER THE APPLICATOR INSTRUCTION SHEET SUPPLIED WITH THE APPLICATOR.
4. APPLICATOR SPECIFIC DATA TO BE ENTERED INTO BLANK MEMORY CHIP AT ASSEMBLY. SEE BELOW FOR PART NUMBER:
MECHANICAL FEED WITH "SMART APPLICATOR" CONVERSION: 8-2266396-4
PNEUMATIC FEED WITH "SMART APPLICATOR" CONVERSION: 8-2266396-4
SERVO FEED WITH "FINE CRIMP HEIGHT ADJUST": 8-2266396-5
SERVO FEED WITH "NON-CRIMP HEIGHT ADJUST": 8-2266396-6
5. ADJUSTMENT OF THE STRIPPER MAY BE REQUIRED WHEN MOVING THE APPLICATOR BETWEEN BENCH AND LEADMAKER APPLICATIONS.
6. APPLY PART NUMBER 1-23419-5 LOCTITE TO THREADS OF ITEM 62. FOR -6 ONLY APPLY PART NUMBER 1-23419-5 LOCTITE TO THREADS OF ITEM 37.
7. GREASE THREADS, GROOVE AND O-RING ON ITEMS 35 & 252.
8. MAGNET, ITEM 166 MUST BE ORIENTED CORRECTLY IN ORDER TO PROPERLY ACTUATE THE COUNTER.
9. CRIMP HEIGHT REFERENCE SETTING WAS THE SETTING USED WHEN THE APPLICATOR WAS QUALIFIED AT THE FACTORY. ADJUSTMENT MAY BE NECESSARY WHEN RUNNING APPLICATOR IN THE FIELD.
10. SPARE FEED CAM STORAGE LOCATION REFER TO INSTRUCTION SHEET FOR ADDITIONAL INFORMATION.
11. TO CONVERT THE APPLICATOR TO A NON-CARRIER CUTTING STYLE, REMOVE ITEM 13 AND ATTACH TO THE LOCATION ON THE BACK SIDE OF THE HOUSING. REFER TO INSTRUCTION SHEET FOR ADDITIONAL INFORMATION.
12. WHEN ASSEMBLING A NON CRIMP HEIGHT ADJUST APPLICATOR (-6) USE SHIMS FROM ITEM 260 TO ACHIEVE A NOMINAL SHIM HEIGHT OF 4.53.
13. CUT TO LENGTH AT ASSEMBLY.

\*WARNING
ON INSTALLATION, SET WIRE DISC, ITEM 40 TO LARGEST WIRE SIZE SETTING. USE OF SETTINGS BELOW MINIMUM REQUIRED CRIMP HEIGHT SETTING WILL CAUSE DAMAGE TO CRIMP TOOLING.

Table with columns: PART NO, DESCRIPTION, ITEM NO. Rows include: 23238-1 INSERT, COUPLING; 2030758-3 TUBING, POLYURETHANE; 5018030-2 NUT, HEX, REG, RoHS, M4; 986220-3 CLAMP, CABLE, BLACK

ATLANTIC VERSION
Shown on sheets 1 of 4 & 2 of 4
(Pacific version shown on sheets 3 of 4 & 4 of 4)

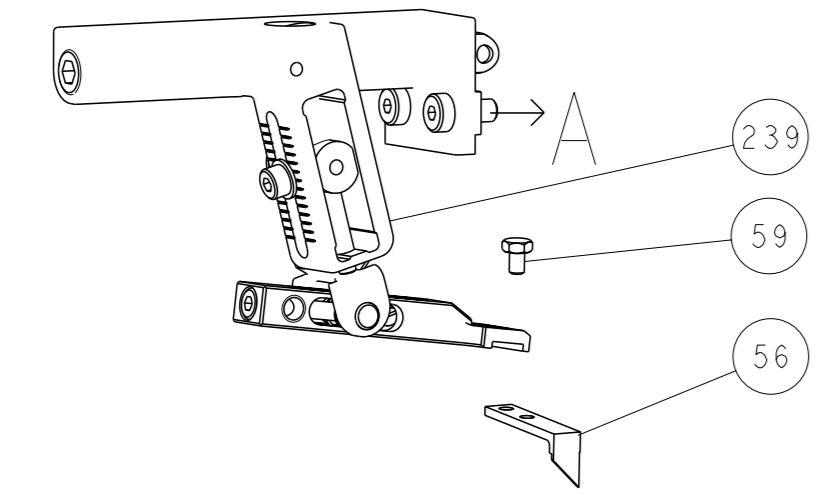
REVISIONS table with columns: P, LTH, DESCRIPTION, DATE, OWN, APVD. Row 1: A, RELEASED, 16OCT2014, LG, GB

Main parts list table with columns: QTY, PART NO, DESCRIPTION, DATE, ITEM NO. Includes items like SCR, SKT HD CAP, BRACKET, AIR BLAST, SCR, SKT HD CAP, FENCE, BLADE, SLUG, PLATE, REAR SHEAR, APPLICATOR SHIM PACK, O-RING, PUSH ROD, AIR FEED, BUSHING, FEED CAM, DETENT PIN, SPRING, COMPRESSION, RAM, AMP STYLE, SHCS, LOW HEAD, MECHANICAL FEED ASSEMBLY, AIR FEED MODULE, TAG, IDENTIFICATION, SPACER, FEEDER, RING, RETAIN, EXTERN, MAGNET, RARE EARTH HIGH ENERGY COUNTER, SPRING, FEED FINGER, PIN, RETAIN, GRVD, HOLDER, FEED FINGER, MEMORY CHIP, PROGRAMMED, SERVO FEED LATCH ASM, FEED FINGER ASSEMBLY, SF, FRONT STRIP GUIDE, SCR, SKT HD CAP, SCREW, DRIVE, RH, LIMITER, ADJUSTMENT BOLT, SCR, SET, SOC, CONE POINT, SCR, SET, FLT POINT, SCR, BHSC, SCR, HEX HD CAP, PAWL, FEED, SCR, SKT HD CAP, FEED CAM, PRE FEED, FEED CAM, POST FEED, APPLICATOR BASIC ASSEMBLY, SF, RAM, AMP STYLE, SIDE FEED, SCR, BHSC, DTSC, NUMBERED FA WIRE ADJUSTMENT, APPLICATOR SHIM PACK, RAM WASHER, PRECISION, FA HEAD, ATLANTIC STYLE, BOLT, ADJUSTMENT, SCR, BHSC, HEX HEAD, FLANGED, SPACER, STRIP GUIDE, ASSEMBLY, STRIP GUIDE, SPRING, COMPRESSION, LEVER, DRAG RELEASE, DRAG, SPECIAL, STRIP GUIDE, SCR, SKT HD SHLDR, WASHER, FLAT, REG M4, ANVIL, WIRE

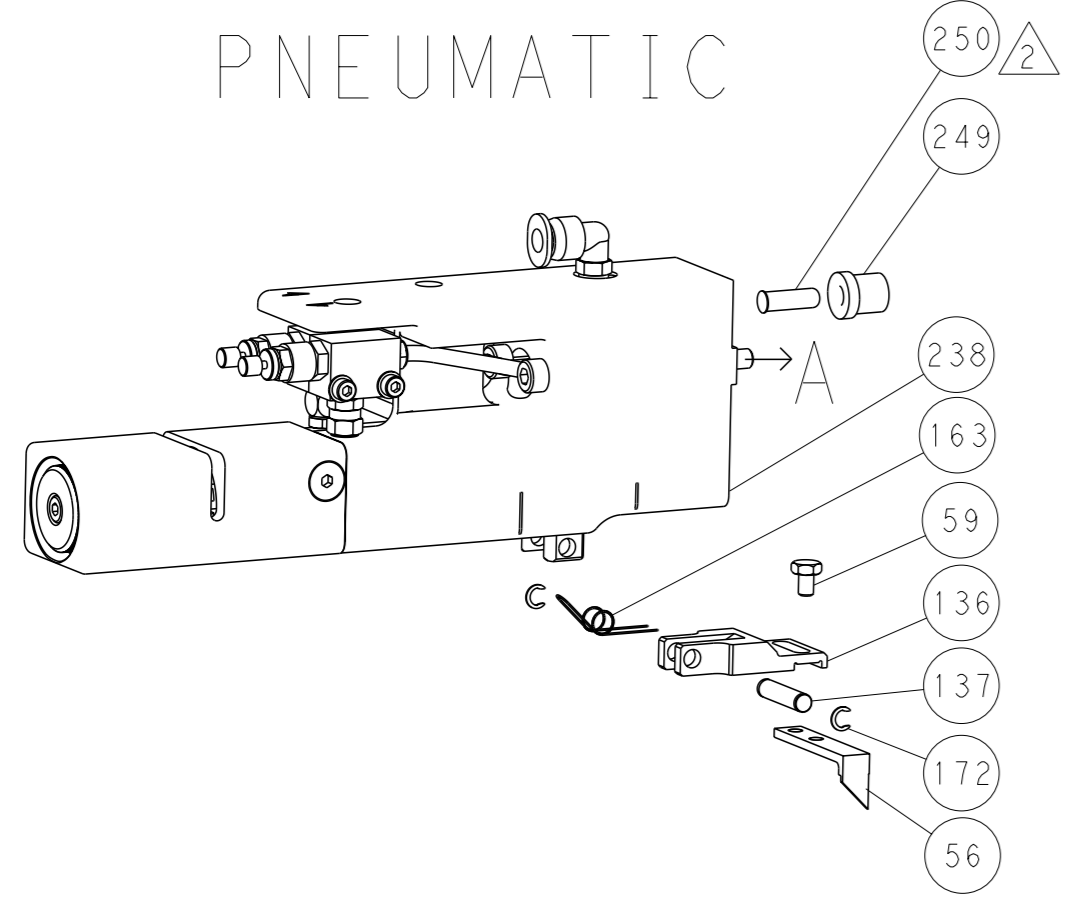
Customer Accessible Production Drawing. Includes dimensions, tolerances, material, weight, scale 1:2, SHEET 1 of 4, REV A. Logo for TE Connectivity, Ocean Side Feed Loose Piece Applicator.

| LOC |    | DIST |     | REVISIONS   |      |     |      |
|-----|----|------|-----|-------------|------|-----|------|
| A   | 66 | P    | LYR | DESCRIPTION | DATE | OWN | APVD |
|     |    | -    |     | SEE SHEET 1 |      |     |      |

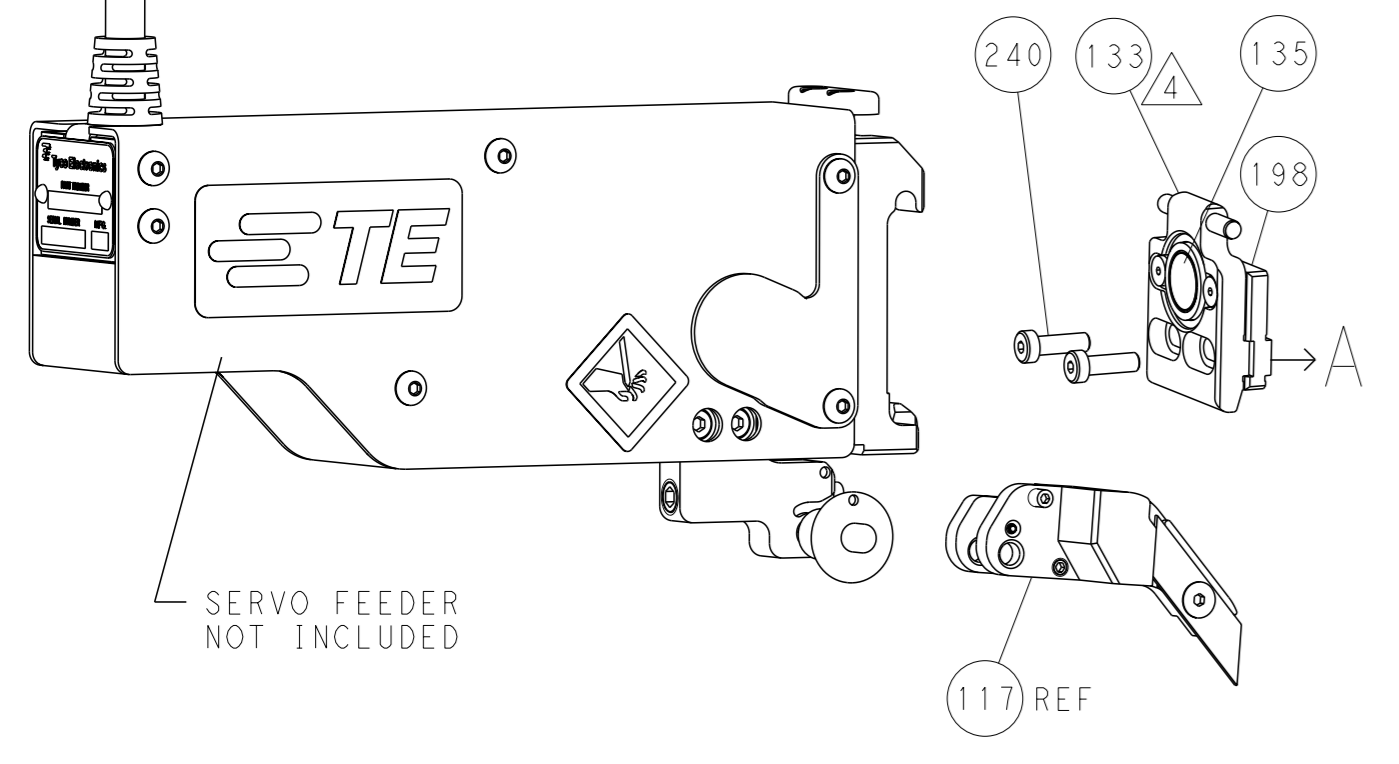
### FEED TYPE MECHANICAL



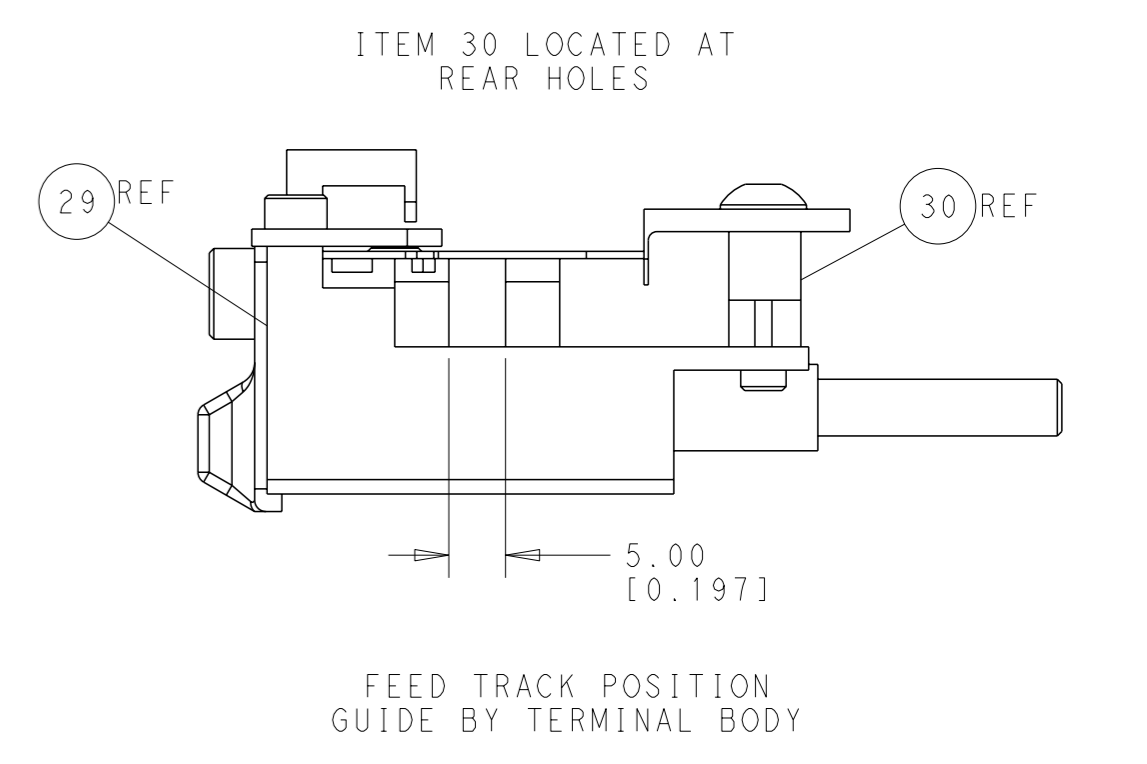
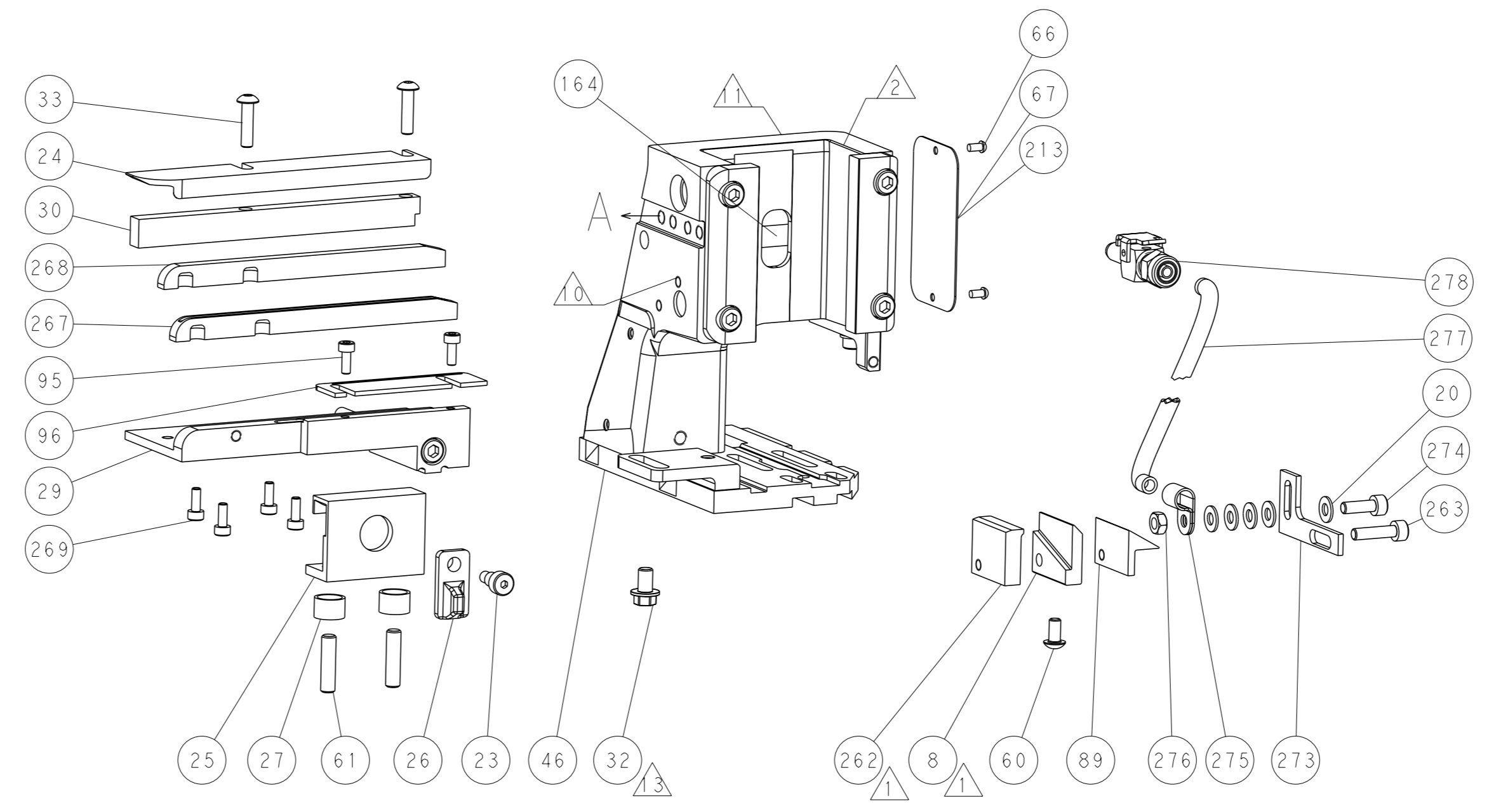
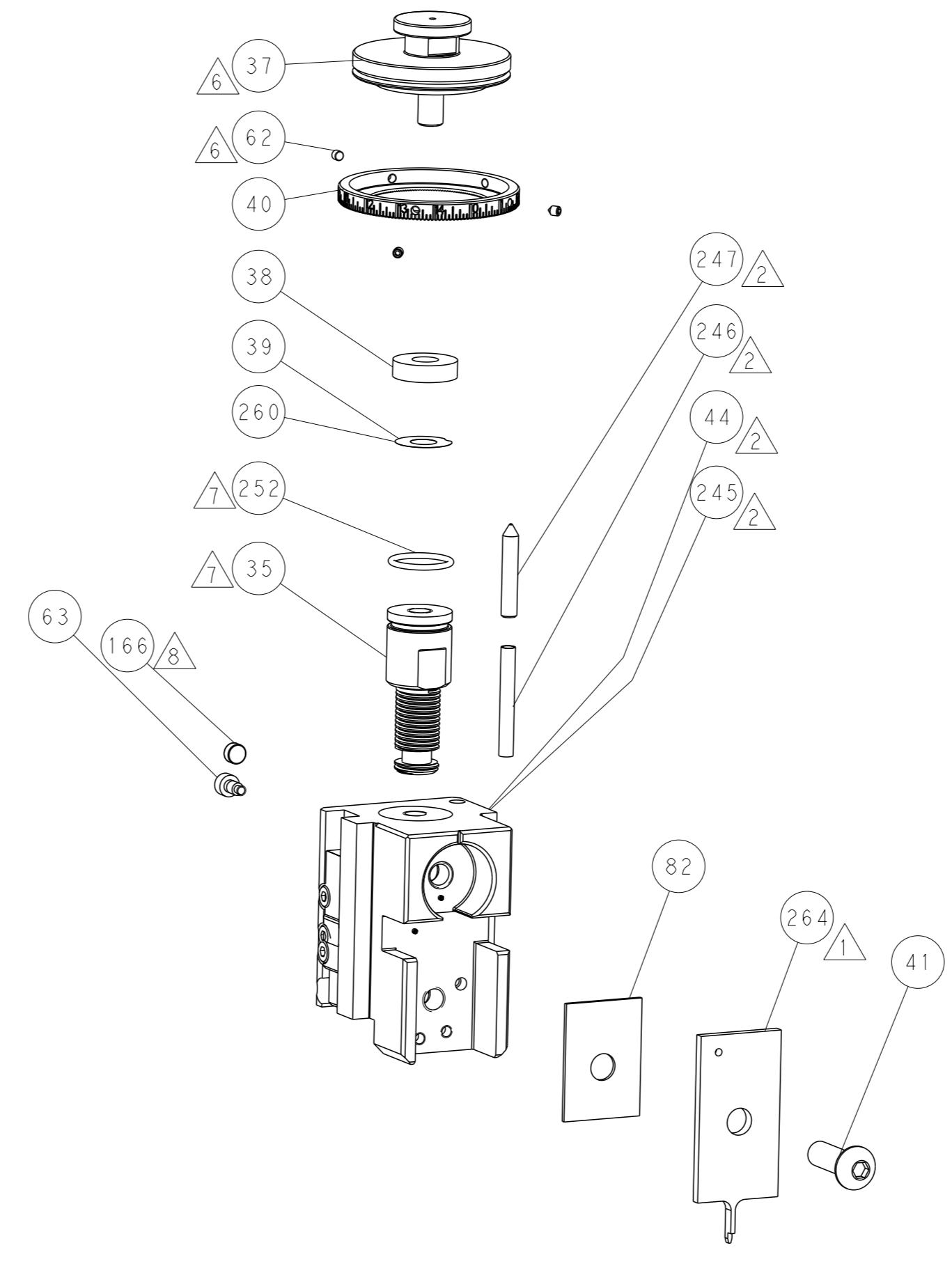
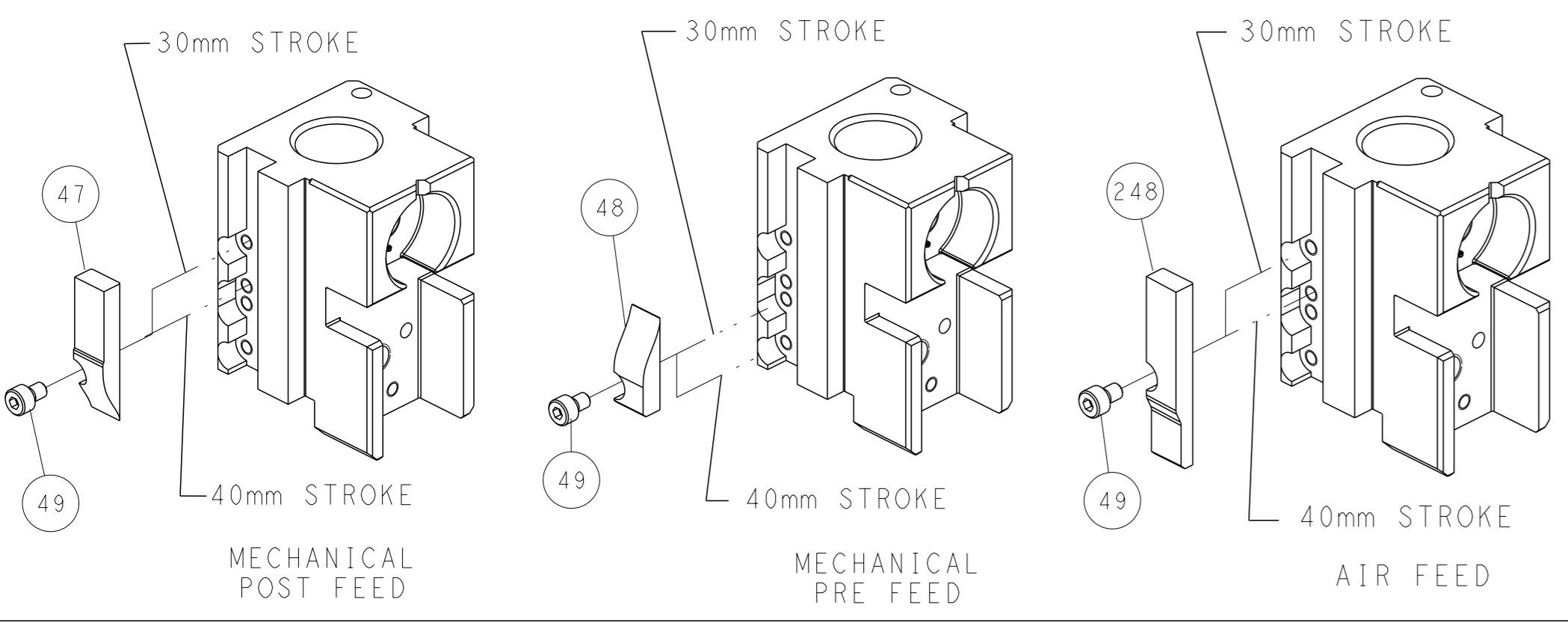
### PNEUMATIC



### SERVO LATCH PLATE



### CAM POSITIONS



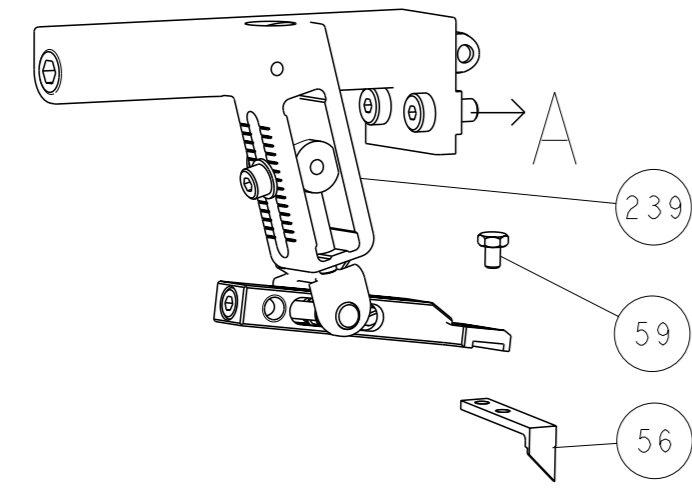
**ATLANTIC VERSION**  
 Shown on sheets 1 of 4 & 2 of 4  
 (Pacific version shown on sheets 3 of 4 & 4 of 4)

|  |                          |  |   |
|--|--------------------------|--|---|
| <small>THIS DRAWING IS A CONTROLLED DOCUMENT FOR TYCO ELECTRONICS CORPORATION. IT IS SUBJECT TO CHANGE AND THE CONTROL AND REVISIONS ORGANIZATION SHOULD BE CONTACTED FOR THE LATEST REVISION.</small> |                          | DWN L. GROSS 18JUL2014<br>CHK T. ELBIN 18JUL2014<br>APVD D. STOUGH 18JUL2014 | NAME Ocean Side Feed Loose Piece Applicator<br>SIZE CAGE CODE DRAWING NO. A1 00779 C=2266396<br>RESTRICTED TO - |
| DIMENSIONS: mm<br>TOLERANCES UNLESS OTHERWISE SPECIFIED:<br>0 PLC ±.5<br>1 PLC ±0.13<br>2 PLC ±0.13<br>3 PLC ±0.013<br>4 PLC ±0.001<br>ANGLES ±.   | MATERIAL: -<br>FINISH: - | WEIGHT: -<br>SCALE: 1:2<br>SHEET 2 OF 4<br>REV A                             | CUSTOMER ACCESSIBLE PRODUCTION DRAWING  |

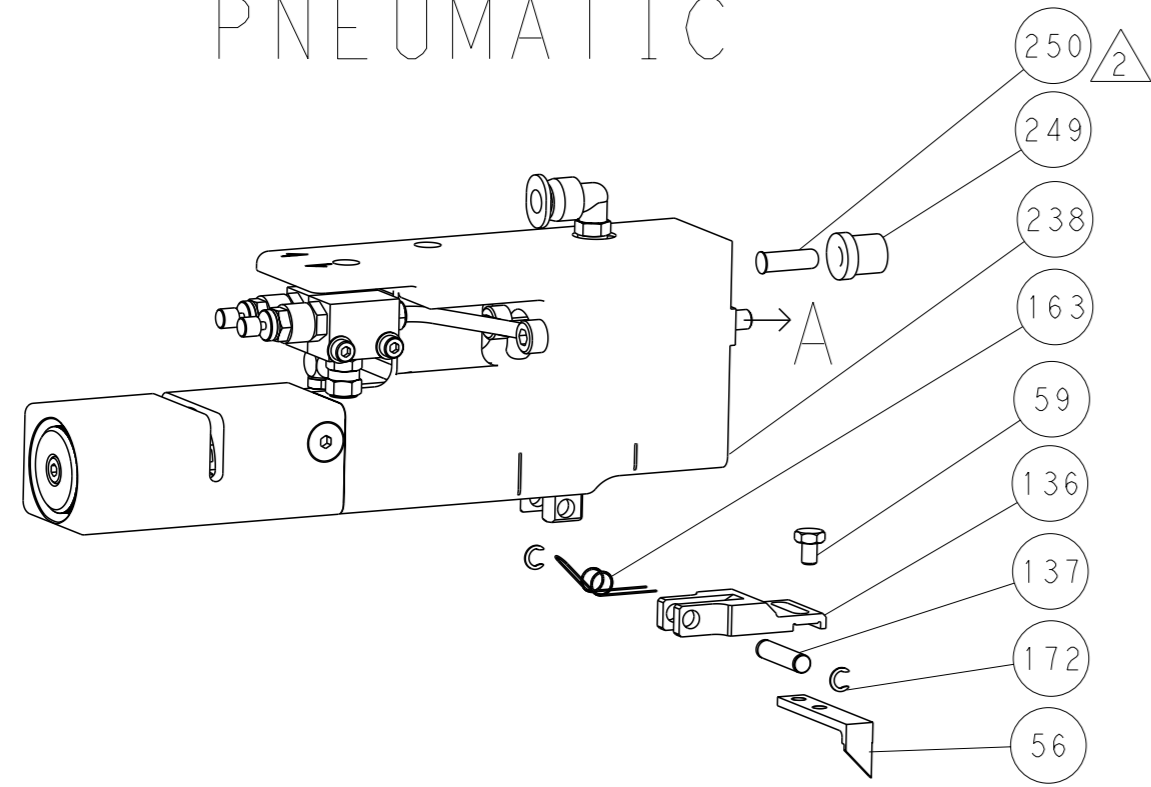


| LOC |    | DIST |     | REVISIONS   |      |     |      |
|-----|----|------|-----|-------------|------|-----|------|
| A   | 66 | P    | LYR | DESCRIPTION | DATE | OWN | APVD |
|     |    | -    |     | SEE SHEET 1 |      |     |      |

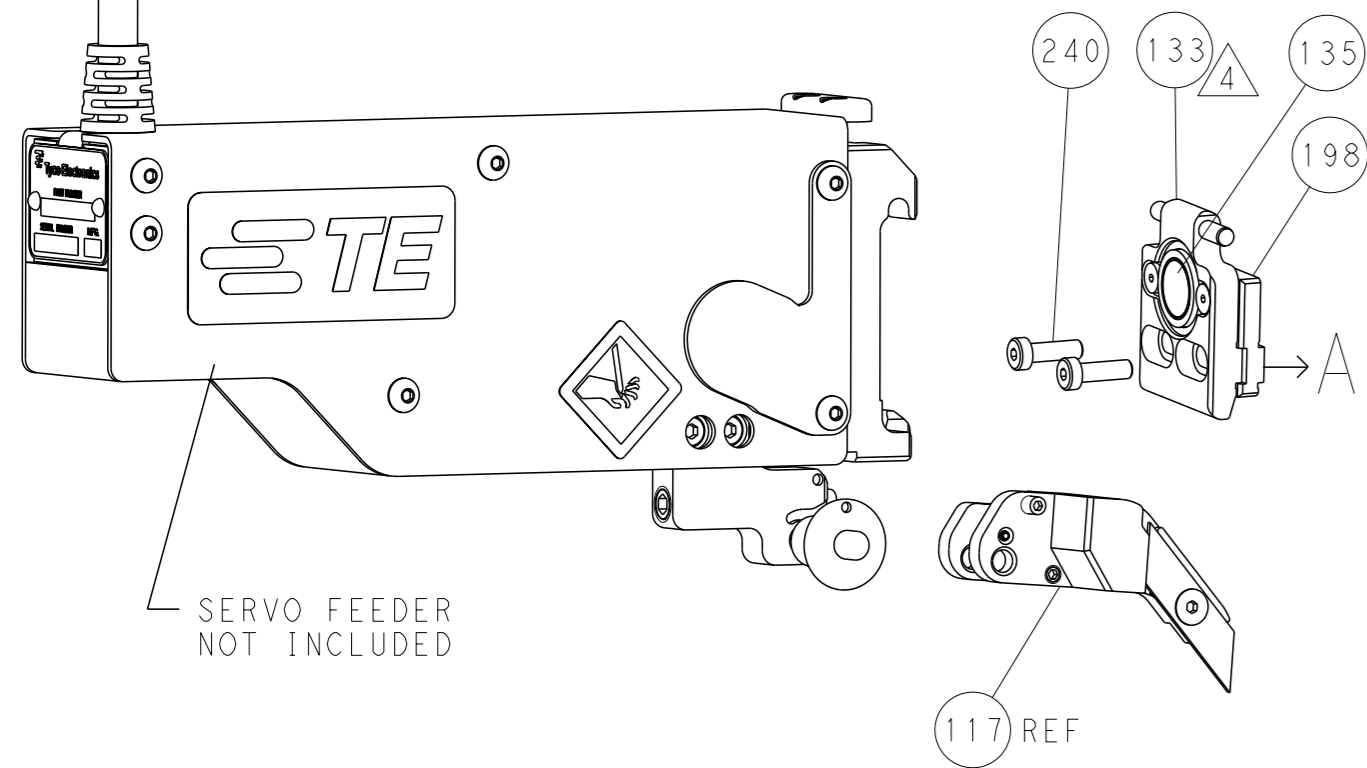
# FEED TYPE MECHANICAL



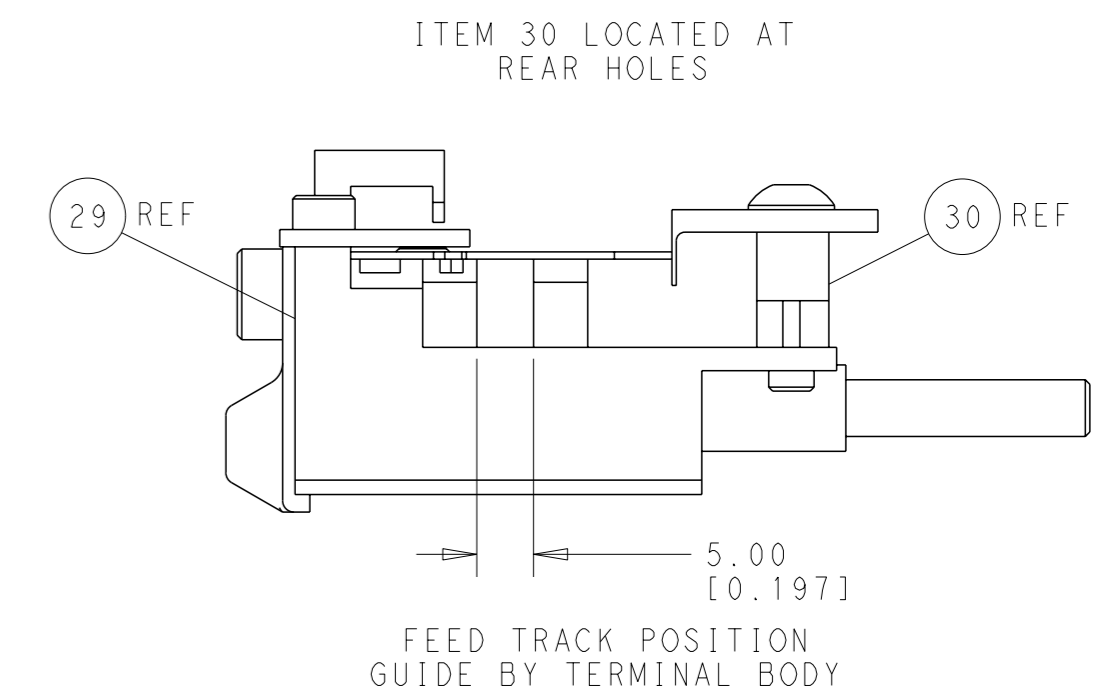
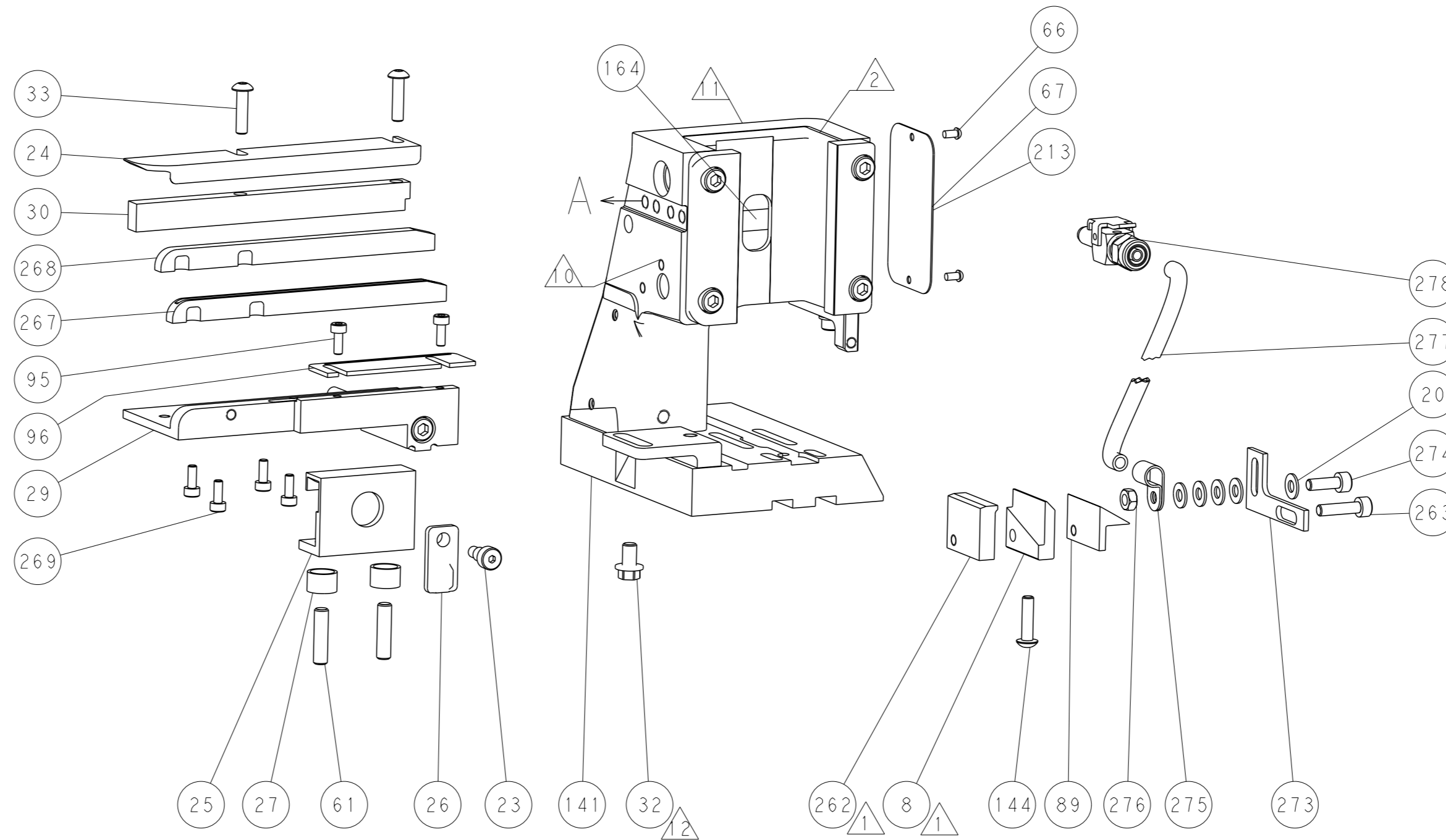
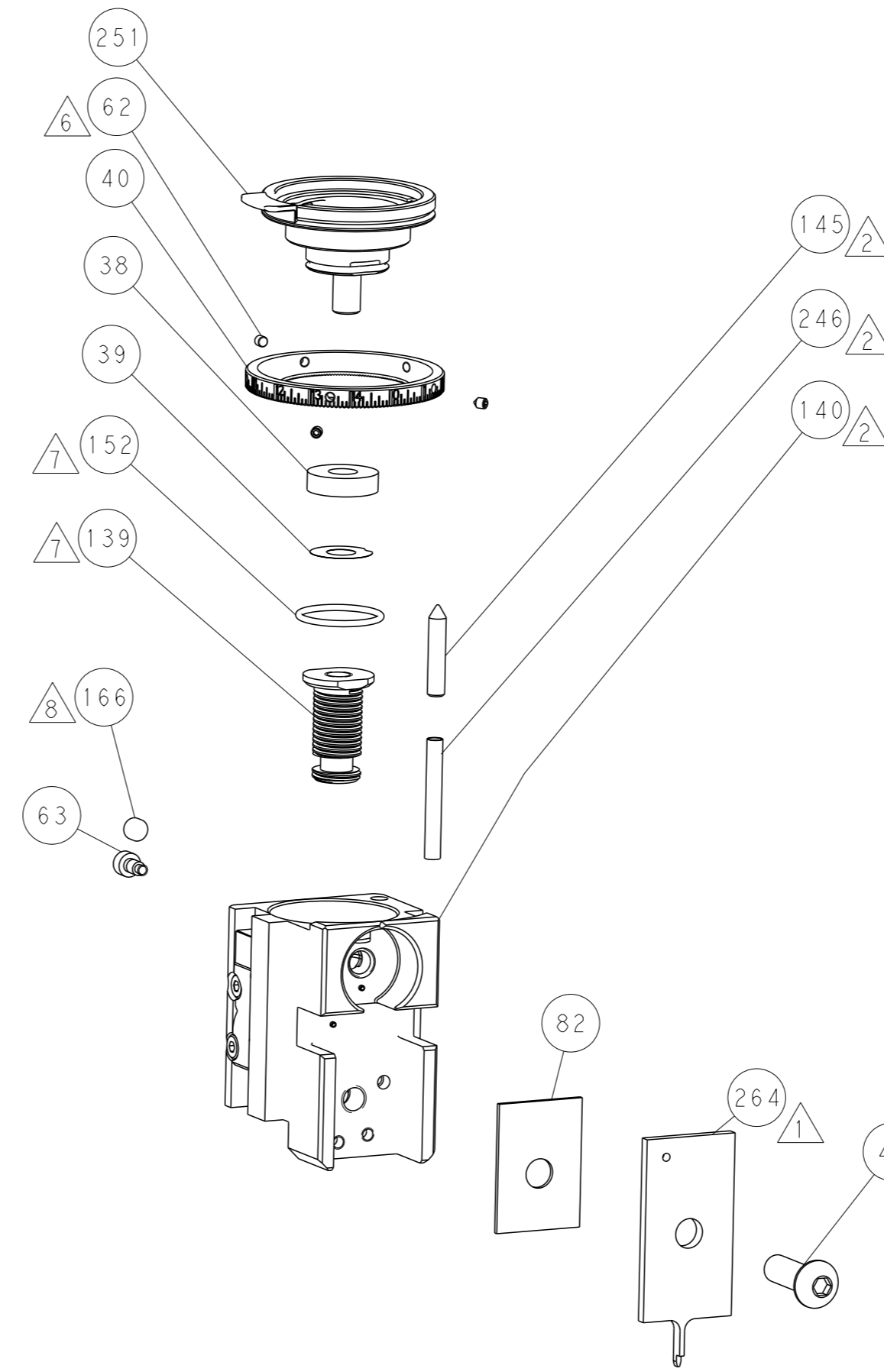
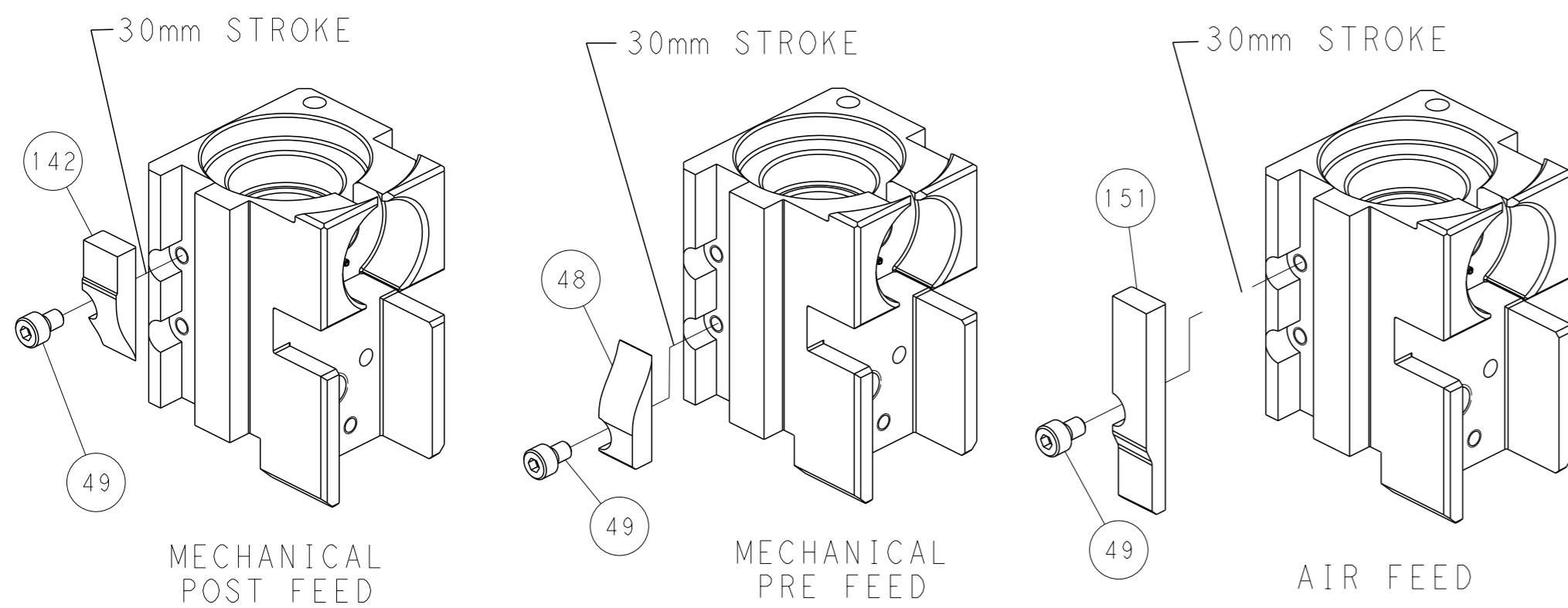
# PNEUMATIC



# SERVO LATCH PLATE



# CAM POSITIONS



**PACIFIC VERSION**  
 Shown on sheets 3 of 4 & 4 of 4  
 (Atlantic version shown on sheets 1 of 4 & 2 of 4)

|  |  |  |  |
|--|--|--|--|
| <small>THIS DRAWING IS UNPUBLISHED DOCUMENT FOR TYCO ELECTRONICS CORPORATION. IT IS SUBJECT TO CHANGE AND THE CONTROLLER ENGINEERING DEPARTMENT SHOULD BE CONTACTED FOR THE LATEST REVISION.</small> |  | DWN: L.GROSS 18JUL2014<br>CHK: T.ELBIN 18JUL2014<br>APVD: D.STOUGH 18JUL2014 | NAME: STE TE Connectivity<br>Harrisburg, PA 17105-3608 |
| DIMENSIONS: mm<br>TOLERANCES UNLESS OTHERWISE SPECIFIED:<br>0 PLC ±.5<br>1 PLC ±0.5<br>2 PLC ±0.13<br>3 PLC ±0.013<br>4 PLC ±0.001<br>ANGLES FINISH ±.   | APPLICATION SPEC: -<br>WEIGHT: -<br>SCALE: 1:2 | PRODUCT SPEC: -<br>SIZE: A1<br>CAGE CODE: 00779<br>DRAWING NO: C=2266396     | RESTRICTED TO: -<br>SHEET 4 of 4<br>REV A              |