

GlobTek, Inc. www.globtek.com 186 Veterans Drive, Northvale, NJ 07647 Tel. (201) 784-1000 Fax (201) 784-0111	Drawing Title: MOLEX HOUSING, 3 circuit, 3.96mm Pitch 09-93-0300 WITH TERMINAL 0008520132 OR EQUIVALENT to MOLEX HOUSING, 3 circuit, 3.96mm Pitch 09-93-0300 WITH TERMINAL 0008520132 OR EQUIVALENT, GT Cable #2*UL1007 22AWG WIRE, 1 BLACK, 1 WHITE: 22 / 2 Conductors, 1.6mm OD, UL1007, 80 Deg.C, 300V, 1 BLACK, 1 WHITE, Approvals: , 73mm,	
	Model No. Low voltage cable	Part No./Ordering No. MLX3410070M7MLX3(R)
		Rev A

CUSTOMIZED LENGTHS, COLORS, CABLE TYPES, TERMINATIONS/PLUGS/RECEPTACLES AVAILABLE UPON REQUEST. ADDITIONAL PLUG OPTIONS ARE AVAILABLE AT <https://www.globtek.com/connectors/> STANDARD PLUGS AND CONNECTORS CAN BE SEEN ONLINE AT <https://www.globtek.com/connectors/> ACTUAL CONNECTORS, OVERMOLDS, FERRITES MAY VARY SLIGHTLY FROM THE PICTURE BELOW DIMENSIONS ARE IN MM UNLESS SPECIFIED OTHERWISE

In Addition to GlobTek Inc.'s renewed ISO9001:2008 - Quality Management System Certification, GlobTek Inc. is now certified to:

- ISO13485:2003 - Medical Devices Quality Management System Certification
- ISO14001:2004 - Environmental Management System Certification

ISO Certificates are available online at <https://www.globtek.com/iso-certificates/>

Prop 65 Statement: <https://en.globtek.com/prop-65-statement.pdf>

The acceptance of this specification and use of the product described in this document indicates the acceptance and binding of the customer to Globtek TERMS AND CONDITIONS (attached to the end of this document), which supersede all other agreements, terms, and conditions (<https://en.globtek.com/terms-and-conditions/>).

The purchaser of this product (Customer) agrees that it is their sole responsibility to determine suitability/fitness of the product described in this specification for their application and to take precautions for protection against any hazards attendant to the handling and use of the product.

Footnote:

GlobTek Inc. will not be liable for the safety and performance of these power supplies if unauthorized access and repair occurs. End user should consult applicable UL, CSA or EN standards for proper installation instruction.

Limitation of Use:

GlobTek products are intended for use with commercial, medical, and/or industrial equipment only. GlobTek product are not authorized for use as mission critical components in life support hazardous environment, nuclear or aircraft applications without prior written approval from the CEO of GlobTek Inc.
 Contents of this document are subject to change without prior notice.

Customer Approval of Specification:

Please approve, sign and send back to GlobTek so we can complete order processing.

A delay in receipt of this form will delay delivery schedule.

Company Name: _____	Customer P/N: _____
Quote Number: _____	Date: _____
Authorized Representative Name: _____	Authorized Representative Signature: _____

GlobTek, Inc. www.globtek.com 186 Veterans Drive, Northvale, NJ 07647 Tel. (201) 784-1000 Fax (201) 784-0111	Drawing Title: MOLEX HOUSING, 3 circuit, 3.96mm Pitch 09-93-0300 WITH TERMINAL 0008520132 OR EQUIVALENT to MOLEX HOUSING, 3 circuit, 3.96mm Pitch 09-93-0300 WITH TERMINAL 0008520132 OR EQUIVALENT, GT Cable #2*UL1007 22AWG WIRE, 1 BLACK, 1 WHITE: 22 / 2 Conductors, 1.6mm OD, UL1007, 80 Deg.C, 300V, 1 BLACK, 1 WHITE, Approvals: , 73mm,	
	Model No. Low voltage cable	
Part No./Ordering No. MLX3410070M7MLX3(R)		Rev A

CUSTOMIZED LENGTHS, COLORS, CABLE TYPES, TERMINATIONS/PLUGS/RECEPTACLES AVAILABLE UPON REQUEST. ADDITIONAL PLUG OPTIONS ARE AVAILABLE AT <https://www.globtek.com/connectors/> STANDARD PLUGS AND CONNECTORS CAN BE SEEN ONLINE AT <https://www.globtek.com/connectors/> ACTUAL CONNECTORS, OVERMOLDS, FERRITES MAY VARY SLIGHTLY FROM THE PICTURE BELOW DIMENSIONS ARE IN MM UNLESS SPECIFIED OTHERWISE

REVISION HISTORY

REV	DESCRIPTION	SUB	DATE	APPROVED
A	Initial release	DR	01/11/2019	QA

Cordset Information:

CordsetColor:

Cord Length (mm):73

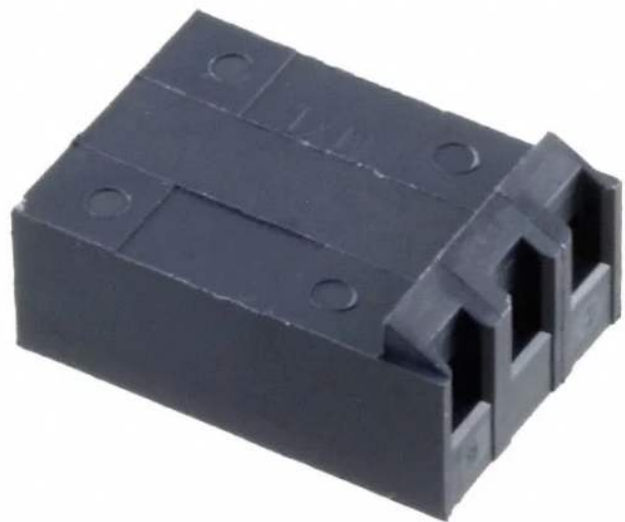
NOTES:

END A AND B MATES TO GTM43007, GTM91110P, AND GTM2065 INPUT CONNECTOR

GlobTek, Inc. www.globtek.com 186 Veterans Drive, Northvale, NJ 07647 Tel. (201) 784-1000 Fax (201) 784-0111	Drawing Title: MOLEX HOUSING, 3 circuit, 3.96mm Pitch 09-93-0300 WITH TERMINAL 0008520132 OR EQUIVALENT to MOLEX HOUSING, 3 circuit, 3.96mm Pitch 09-93-0300 WITH TERMINAL 0008520132 OR EQUIVALENT, GT Cable #2*UL1007 22AWG WIRE, 1 BLACK, 1 WHITE: 22 / 2 Conductors, 1.6mm OD, UL1007, 80 Deg.C, 300V, 1 BLACK, 1 WHITE, Approvals: , 73mm,	
	Model No. Low voltage cable	Rev A
Part No./Ordering No. MLX3410070M7MLX3(R)		

CUSTOMIZED LENGTHS, COLORS, CABLE TYPES, TERMINATIONS/PLUGS/RECEPTACLES AVAILABLE UPON REQUEST. ADDITIONAL PLUG OPTIONS ARE AVAILABLE AT <https://www.globtek.com/connectors/> STANDARD PLUGS AND CONNECTORS CAN BE SEEN ONLINE AT <https://www.globtek.com/connectors/> ACTUAL CONNECTORS, OVERMOLDS, FERRITES MAY VARY SLIGHTLY FROM THE PICTURE BELOW DIMENSIONS ARE IN MM UNLESS SPECIFIED OTHERWISE

END A



Mates with: 26604030, 417910833, 1718140003, 26481036, 1718130003, 1718133003, 417920512, 416710002, 26482032, 26602030, 417910850, 26603030, 26481032, 26614030, 26481030, 1718141003, 26486034, 26482036, 26605030, 1718133003, 26644030, 26481035, 26615030, 26481031, 26645030, 26482031, 416710025, 26482035

END B

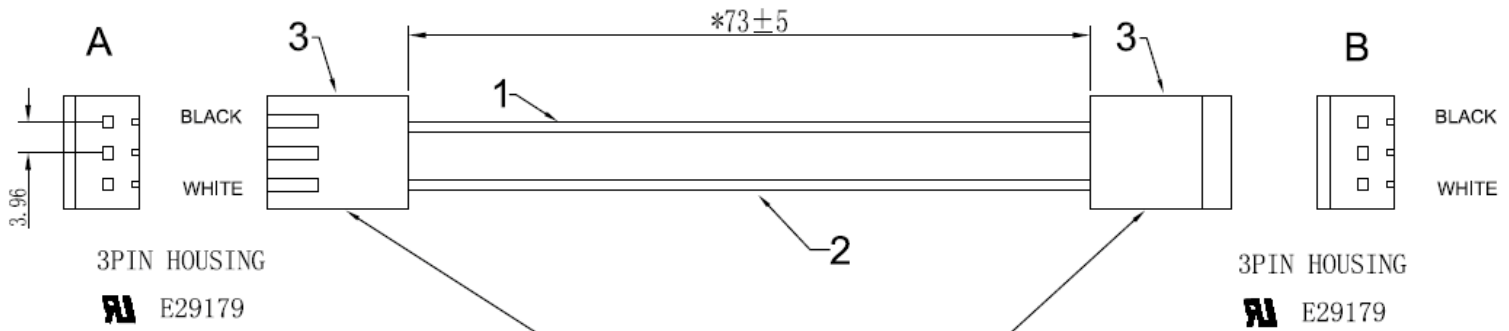


Mates with: 26604030, 417910833, 1718140003, 26481036, 1718130003, 1718133003, 417920512, 416710002, 26482032, 26602030, 417910850, 26603030, 26481032, 26614030, 26481030, 1718141003, 26486034, 26482036, 26605030, 1718133003, 26644030, 26481035, 26615030, 26481031, 26645030, 26482031, 416710025, 26482035

GlobTek, Inc. www.globtek.com 186 Veterans Drive, Northvale, NJ 07647 Tel. (201) 784-1000 Fax (201) 784-0111	Drawing Title: MOLEX HOUSING, 3 circuit, 3.96mm Pitch 09-93-0300 WITH TERMINAL 0008520132 OR EQUIVALENT to MOLEX HOUSING, 3 circuit, 3.96mm Pitch 09-93-0300 WITH TERMINAL 0008520132 OR EQUIVALENT, GT Cable #2*UL1007 22AWG WIRE, 1 BLACK, 1 WHITE: 22 / 2 Conductors, 1.6mm OD, UL1007, 80 Deg.C, 300V, 1 BLACK, 1 WHITE, Approvals: , 73mm,	
	Model No. Low voltage cable	Part No./Ordering No. MLX3410070M7MLX3(R)
		Rev A

CUSTOMIZED LENGTHS, COLORS, CABLE TYPES, TERMINATIONS/PLUGS/RECEPTACLES AVAILABLE UPON REQUEST. ADDITIONAL PLUG OPTIONS ARE AVAILABLE AT <https://www.globtek.com/connectors/> STANDARD PLUGS AND CONNECTORS CAN BE SEEN ONLINE AT <https://www.globtek.com/connectors/> ACTUAL CONNECTORS, OVERMOLDS, FERRITES MAY VARY SLIGHTLY FROM THE PICTURE BELOW DIMENSIONS ARE IN MM UNLESS SPECIFIED OTHERWISE

CABLE IMAGE



Mating model:
 GT(M)2065 series input connector
 GTM43007 (A, B, C) series input connector
 GTM91110P series input connector

Mating connector:
 432-03963003 (R)

GlobTek, Inc. www.globtek.com 186 Veterans Drive, Northvale, NJ 07647 Tel. (201) 784-1000 Fax (201) 784-0111	Drawing Title: MOLEX HOUSING, 3 circuit, 3.96mm Pitch 09-93-0300 WITH TERMINAL 0008520132 OR EQUIVALENT to MOLEX HOUSING, 3 circuit, 3.96mm Pitch 09-93-0300 WITH TERMINAL 0008520132 OR EQUIVALENT, GT Cable #2*UL1007 22AWG WIRE, 1 BLACK, 1 WHITE: 22 / 2 Conductors, 1.6mm OD, UL1007, 80 Deg.C, 300V, 1 BLACK, 1 WHITE, Approvals: , 73mm,	
	Model No. Low voltage cable	Part No./Ordering No. MLX3410070M7MLX3(R)
		Rev A

CUSTOMIZED LENGTHS, COLORS, CABLE TYPES, TERMINATIONS/PLUGS/RECEPTACLES AVAILABLE UPON REQUEST. ADDITIONAL PLUG OPTIONS ARE AVAILABLE AT <https://www.globtek.com/connectors/> STANDARD PLUGS AND CONNECTORS CAN BE SEEN ONLINE AT <https://www.globtek.com/connectors/> ACTUAL CONNECTORS, OVERMOLDS, FERRITES MAY VARY SLIGHTLY FROM THE PICTURE BELOW DIMENSIONS ARE IN MM UNLESS SPECIFIED OTHERWISE

End A Code:MLX3 Description:MOLEX HOUSING, 3 circuit, 3.96mm Pitch 09-93-0300 WITH TERMINAL 0008520132 OR EQUIVALENT Rating (V):250 Rating (A):7.0 Gender:Female Overmolded:No	Cable Code:2*UL1007 22AWG WIRE, 1 BLACK, 1 WHITE Description:GT Cable #2*UL1007 22AWG WIRE, 1 BLACK, 1 WHITE: 22 / 2 Conductors, 1.6mm OD, UL1007, 80 Deg.C, 300V, 1 BLACK, 1 WHITE, Approvals: Color:GlobTek Black Wire Gauge(AWG):22 Cond:2 Type:UL1007 Temperature:80° C Amps:3 Volts:300 OD:1.6 ConductorsColors:1 BLACK, 1 WHITE	End B Code:MLX3 Description:MOLEX HOUSING, 3 circuit, 3.96mm Pitch 09-93-0300 WITH TERMINAL 0008520132 OR EQUIVALENT Rating (V):250 Rating (A):7.0 Gender:Female Overmolded:No
---	--	---

Overall cable rating:

Plug Approvals	Cable Approvals	Connector Approvals
----------------	-----------------	---------------------



UL RECOGNIZED

AGENCY ONLINE DOCUMENTS	http://en.globtek.com/cordsets/
RoHS/RoHS3 Declaration	https://www.globtek.com/pdf/rohs_cert/01t0c000008qi76AAA
REACH Declaration	https://www.globtek.com/pdf/iso_certificates/REACH.pdf
Conflict Minerals Declaration	https://www.globtek.com/pdf/conflict-minerals.pdf
Prop 65 Statement	https://en.globtek.com/prop-65-statement.pdf
CE.UKCA.Cord	https://globtek.secure.force.com/spec/ec_decl_product_model_family_incl_cord?id=01t0c000008qi76

IPXY rating is based on 3rd party testing and customers should check suitability and test system level IPXY rating before ordering.

GlobTek, Inc. www.globtek.com 186 Veterans Drive, Northvale, NJ 07647 Tel. (201) 784-1000 Fax (201) 784-0111	Drawing Title: MOLEX HOUSING, 3 circuit, 3.96mm Pitch 09-93-0300 WITH TERMINAL 0008520132 OR EQUIVALENT to MOLEX HOUSING, 3 circuit, 3.96mm Pitch 09-93-0300 WITH TERMINAL 0008520132 OR EQUIVALENT, GT Cable #2*UL1007 22AWG WIRE, 1 BLACK, 1 WHITE: 22 / 2 Conductors, 1.6mm OD, UL1007, 80 Deg.C, 300V, 1 BLACK, 1 WHITE, Approvals: , 73mm,	
	Model No. Low voltage cable	Part No./Ordering No. MLX3410070M7MLX3(R)
		Rev A

CUSTOMIZED LENGTHS, COLORS, CABLE TYPES, TERMINATIONS/PLUGS/RECEPTACLES AVAILABLE UPON REQUEST. ADDITIONAL PLUG OPTIONS ARE AVAILABLE AT <https://www.globtek.com/connectors/> STANDARD PLUGS AND CONNECTORS CAN BE SEEN ONLINE AT <https://www.globtek.com/connectors/> ACTUAL CONNECTORS, OVERMOLDS, FERRITES MAY VARY SLIGHTLY FROM THE PICTURE BELOW DIMENSIONS ARE IN MM UNLESS SPECIFIED OTHERWISE

Hanking:NO HANK
 Description:NO HANK, BULK PACKED
 Image:

Notes/Modifications/Customizations (notes in this section supersede the values shown in the standard spec):