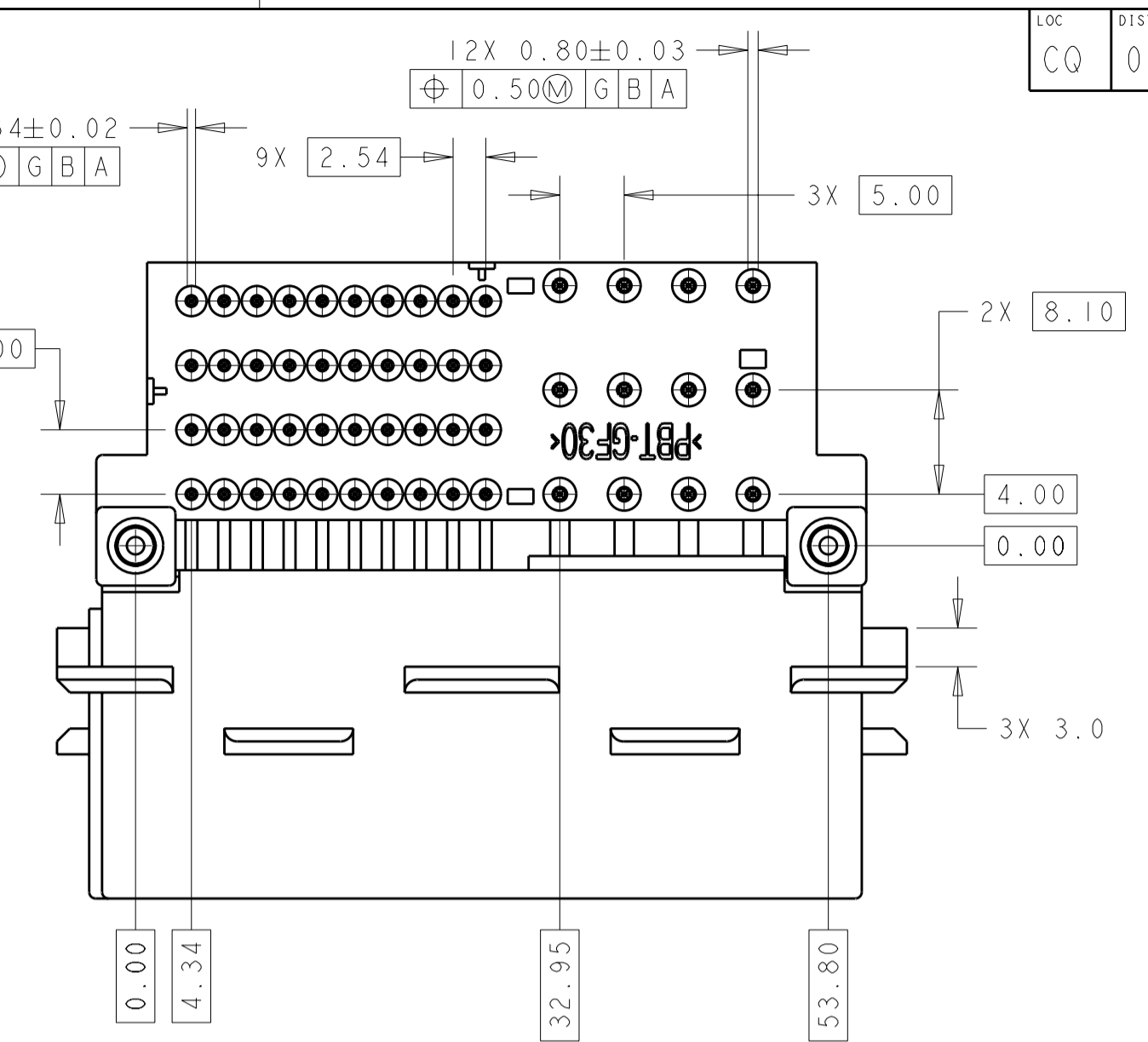
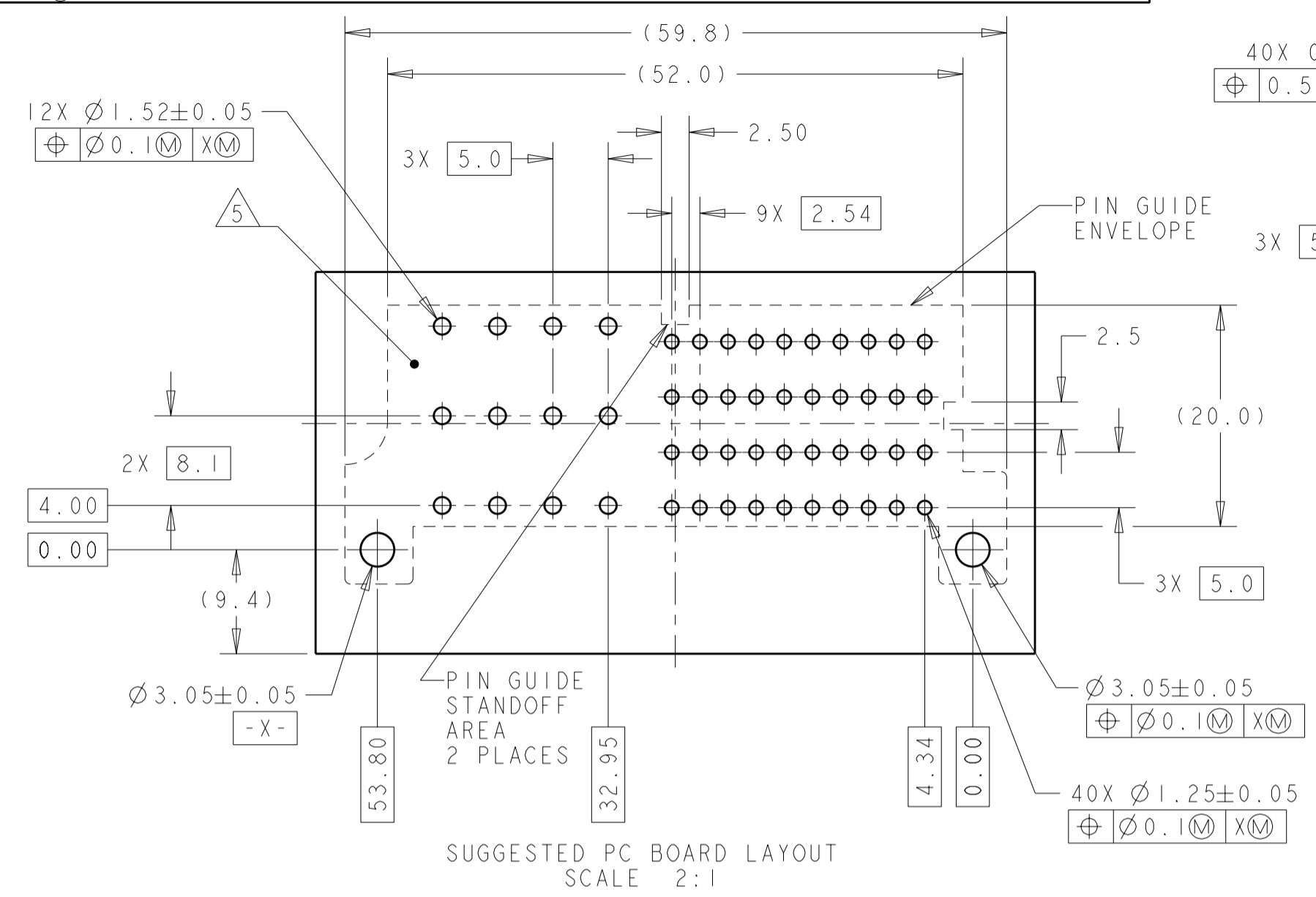
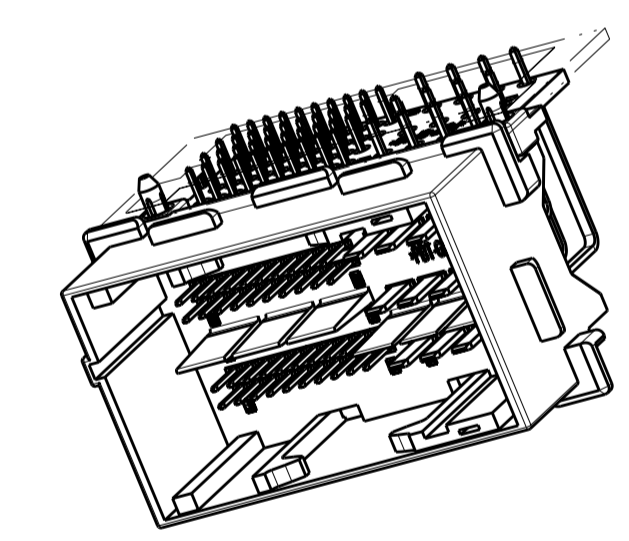
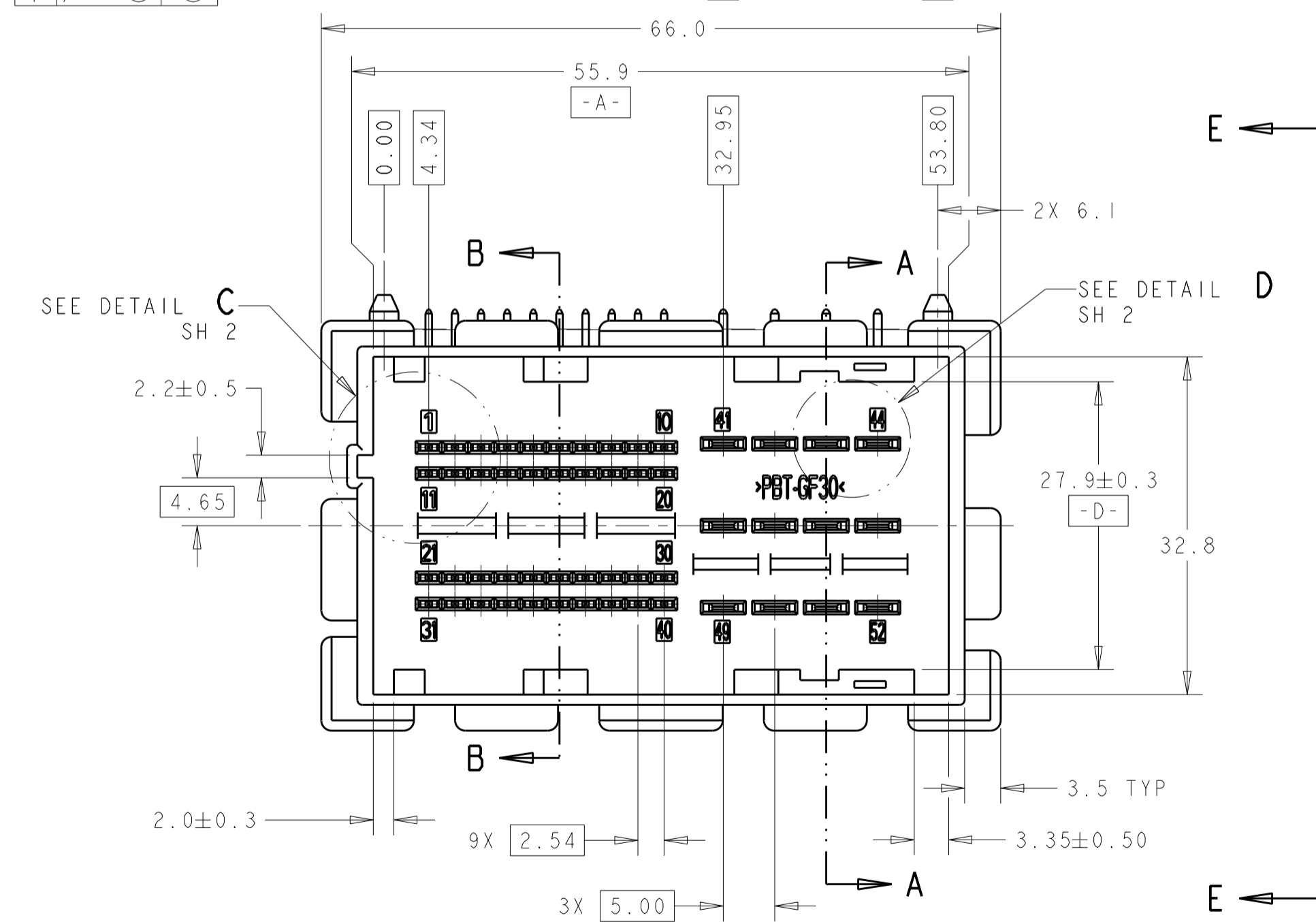
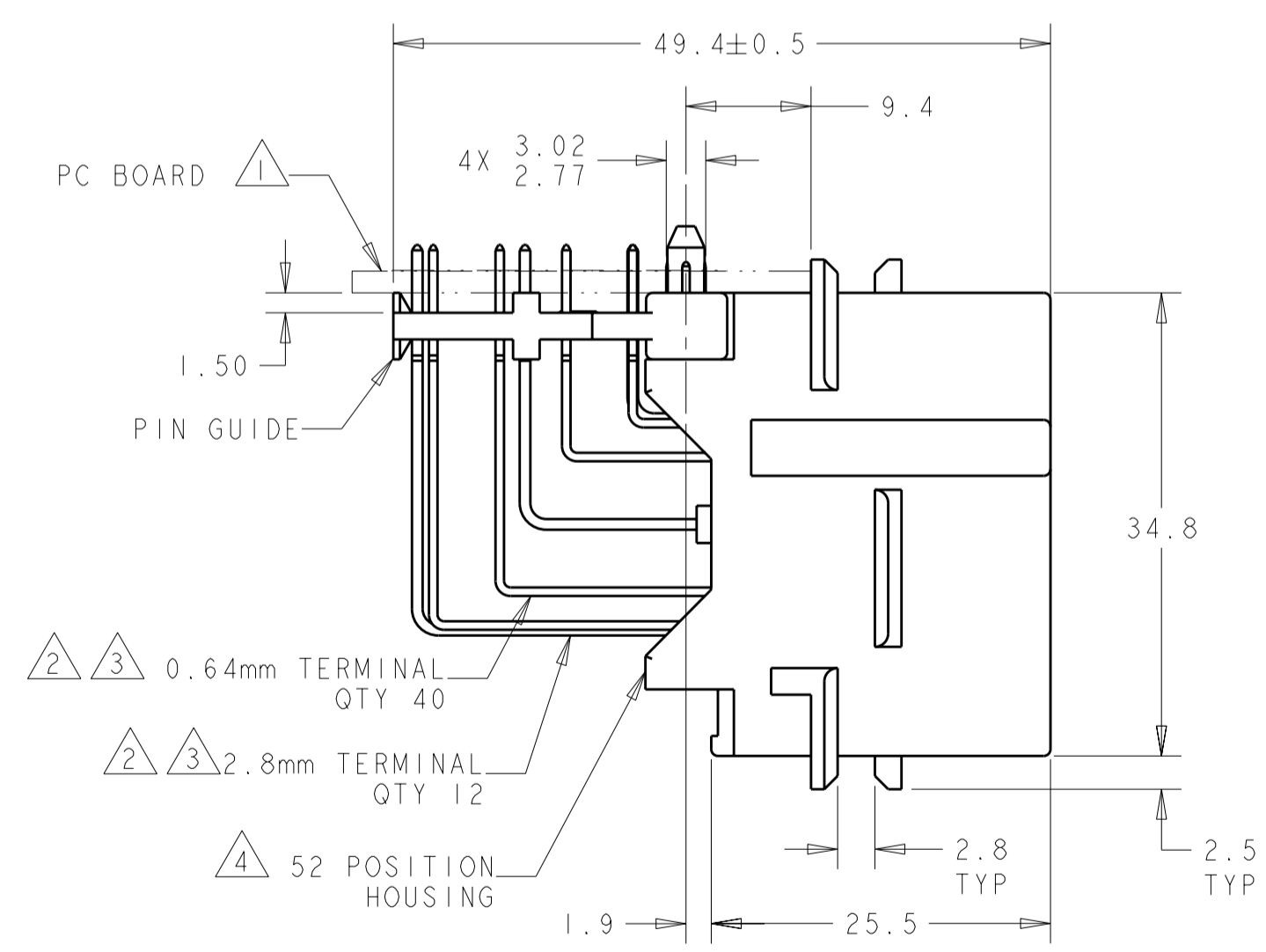


THIS DRAWING IS UNPUBLISHED. RELEASED FOR PUBLICATION 20  
 © COPYRIGHT 20 BY - ALL RIGHTS RESERVED.

| REVISIONS |     |                           |           |     |      |
|-----------|-----|---------------------------|-----------|-----|------|
| P         | LTR | DESCRIPTION               | DATE      | DWN | APVD |
| E         |     | REVISED PER ECO-11-016864 | 22AUG2011 | DD  | RL   |



- 1 PC BOARD SUPPLIED BY CUSTOMER.
- 2 MATERIAL: BRASS, TEMPER H04.
- 3 FINISH: MATING END - 0.0008-0.0016 THICK MATTE TIN PER AMP SPEC 112-65-1. SOLDER TAIL - 0.0038 - 0.0064 THICK MATTE TIN PER AMP SPEC 112-65-1 ALL OVER 0.0020 MINIMUM NICKEL PER AMP SPEC 112-25-2.
- 4 MATERIAL: 30% GLASS FILLED BASF PBT.
- 5 CLEARANCE BETWEEN PC BOARD AND PIN GUIDE IS 1.75mm IN THIS AREA.
- 6. MINIMUM PIN RETENTION REQUIREMENT IN BOTH DIRECTIONS SHALL BE 3 TIMES THE MAXIMUM TERMINAL SEPARATION FORCE AFTER BUYER'S SOLDERING PROCESS PER DVP&R.
- 7. AS STITCHED, MINIMUM PIN RETENTION IN BOTH DIRECTIONS SHALL BE 40N.



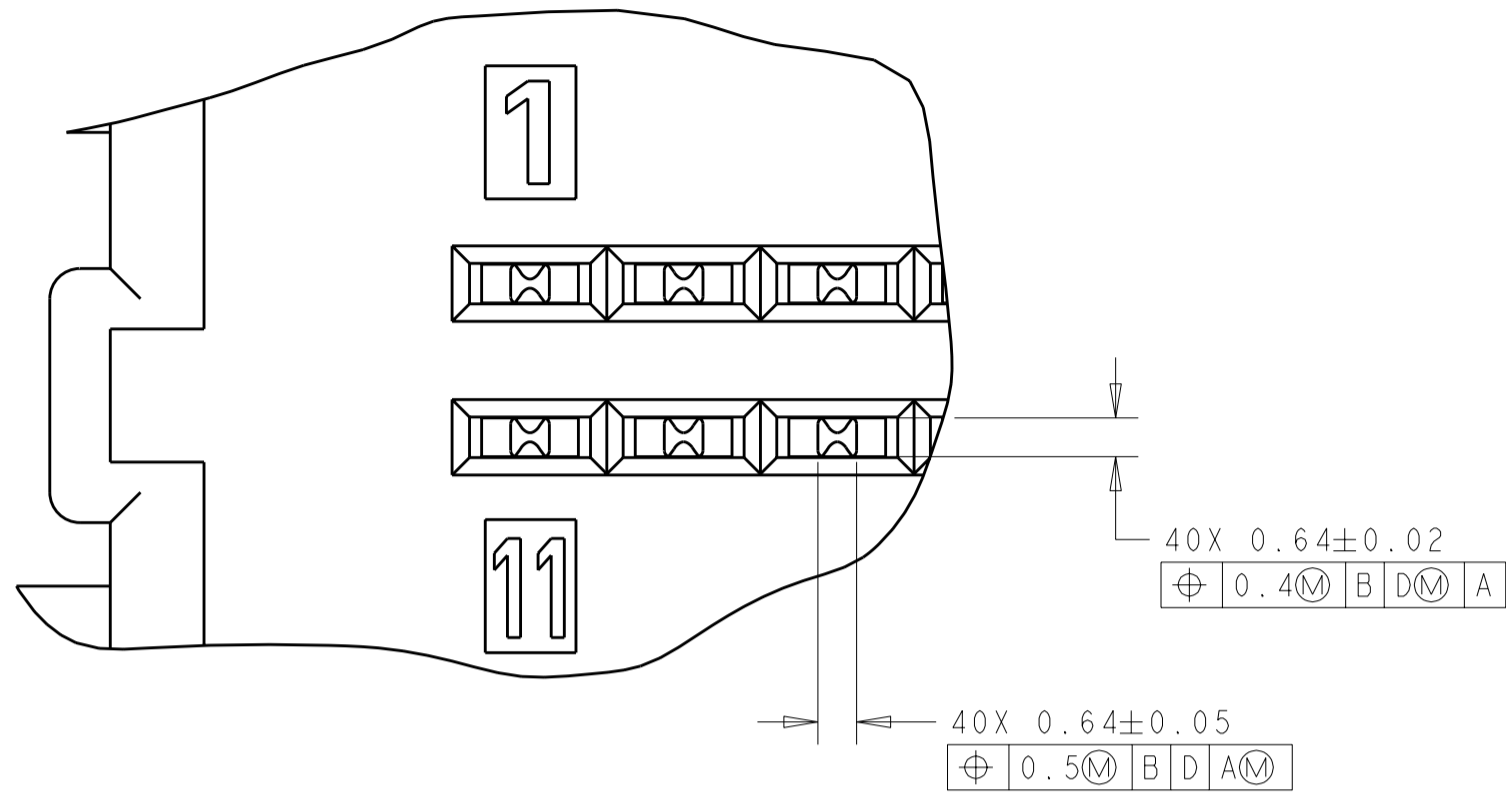
SCALE 1:1

1438527-1  
PART NUMBER

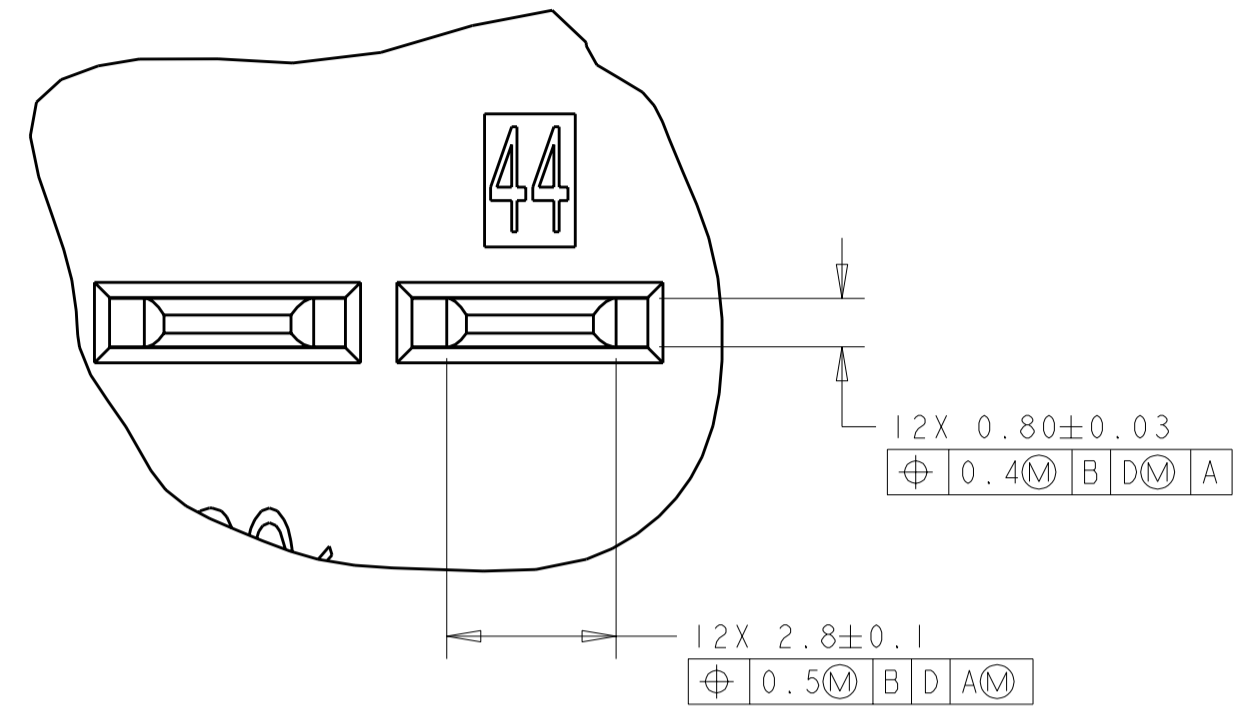
|  |  |                            |  |  |
|--|--|----------------------------|--|--|
| THIS DRAWING IS A CONTROLLED DOCUMENT. |  | DWN R. VESTAL 18MAR2004    | TE Connectivity                                      |  |
| DIMENSIONS: mm                         |  | CHK A. EBRAHEEM 18MAR2004  |  |  |
| TOLERANCES UNLESS OTHERWISE SPECIFIED: |  | APVD A. EBRAHEEM 18MAR2004 | NAME: HEADER ASSEMBLY, 52 POSITION, 0.64mm AND 2.8mm |  |
| 0 PLC ±0.5                             |  | PRODUCT SPEC               | SIZE: A200779 C-1438527                              |  |
| 1 PLC ±0.3                             |  | APPLICATION SPEC           | RESTRICTED TO  |  |
| 2 PLC ±0.10                            |  | WEIGHT                     | SCALE 2:1 SHEET 1 OF 2 REV E                         |  |
| 3 PLC ±                                |  | CUSTOMER DRAWING           |  |  |
| 4 PLC ±                                |  |                            |  |  |
| ANGLES ±                               |  |                            |  |  |
| FINISH ±                               |  |                            |  |  |

THIS DRAWING IS UNPUBLISHED. RELEASED FOR PUBLICATION 20  
 © COPYRIGHT 20 BY - ALL RIGHTS RESERVED.

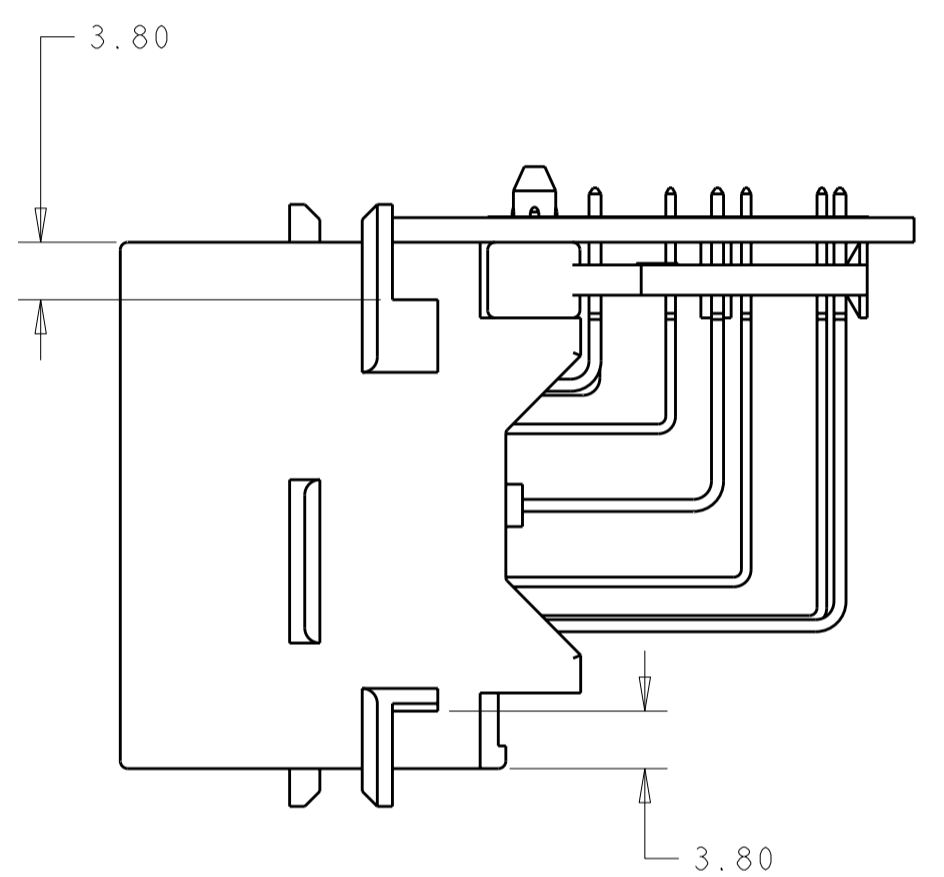
| LOC | DIST | REVISIONS   |      |     |      |
|-----|------|-------------|------|-----|------|
| P   | LTR  | DESCRIPTION | DATE | DWN | APVD |
| CQ  | 00   | SEE SHEET 1 |      |     |      |



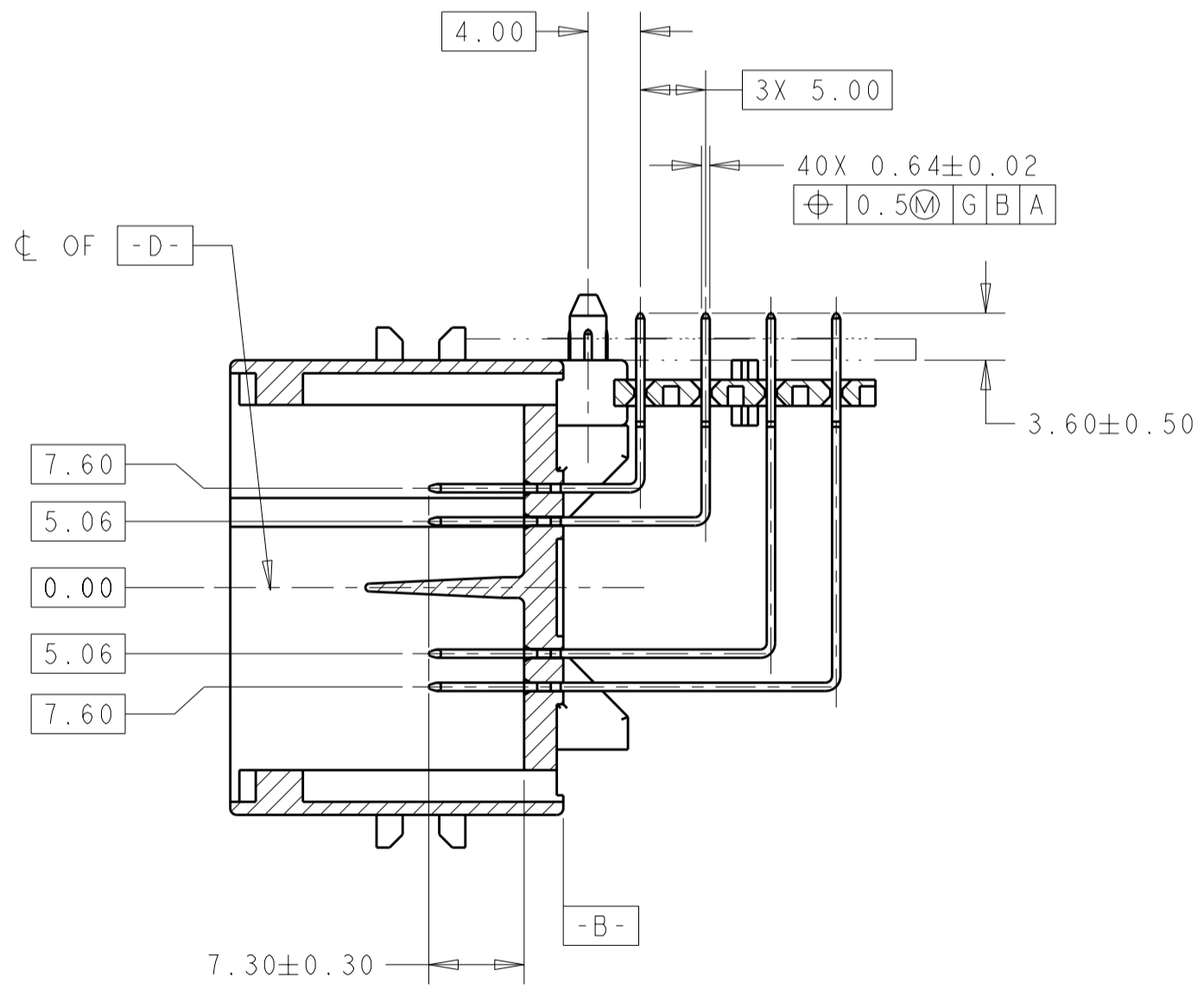
DETAIL C  
SCALE 8:1



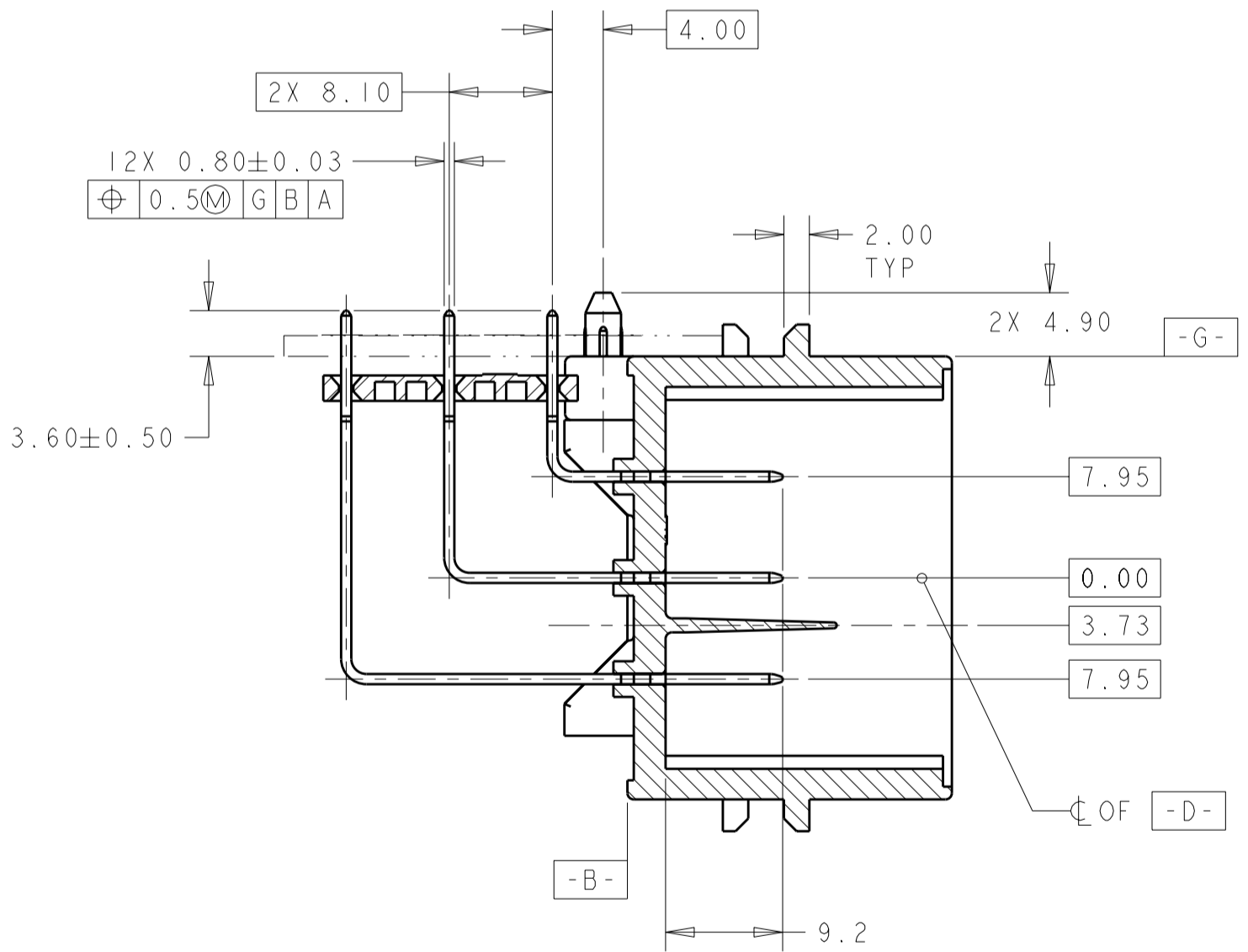
DETAIL D  
SCALE 8:1



VIEW E-E



SECTION B-B  
THROUGH 0.64mm BLADES



SECTION A-A  
THROUGH 2.8mm BLADES

|   |  |                                  |   |                          |
|---|--|----------------------------------|---|--------------------------|
| THIS DRAWING IS A CONTROLLED DOCUMENT.  |  | DWN<br>R. VESTAL<br>18MAR2004    | TE Connectivity   |                          |
| DIMENSIONS:<br>mm   |  | CHK<br>A. EBRAHEEM<br>18MAR2004  |   |                          |
| TOLERANCES UNLESS OTHERWISE SPECIFIED:  |  | APVD<br>A. EBRAHEEM<br>18MAR2004 | NAME<br>HEADER ASSEMBLY,<br>52 POSITION, 0.64mm AND 2.8mm |                          |
| 0 PLC ±0.5<br>1 PLC ±0.3<br>2 PLC ±0.10<br>3 PLC ±<br>4 PLC ±<br>ANGLES ±<br>FINISH ± |  | PRODUCT SPEC<br>-                | SIZE<br>A200779   | DRAWING NO.<br>C-1438527 |
| MATERIAL<br>-   |  | APPLICATION SPEC<br>-            | RESTRICTED TO<br>-  | SCALE<br>2:1             |
|   |  | WEIGHT<br>-                      | SHEET<br>2  | OF<br>2                  |
|   |  | CUSTOMER DRAWING                 | REV<br>E  |                          |