

PART NUMBER	REV	FIRST USED	TERMINATOR	FEED TYPE	DESCRIPTION
1528453-1	C	-	LEADMAKER	MECH POST FEED	CUTS CARRIER
1528453-2	C	-	BENCH	MECH PRE FEED	CUTS CARRIER
1528453-6	C	-	LEADMAKER	MECH POST FEED	CONTINUOUS CARRIER
7-1528453-1	C	-	LEADMAKER	MECH POST FEED	-1 AND SPARE PARTS
7-1528453-2	C	-	BENCH	MECH PRE FEED	-2 AND SPARE PARTS
7-1528453-6	C	-	LEADMAKER	MECH POST FEED	-6 AND SPARE PARTS
7-1528453-7	A	-	-	-	SPARE PARTS KIT

CRIMP DATA AMP TERMINAL AMP CRIMP SPECS

TERMINAL NAME: AMP MODU MOD. IV

CRIMP	SIZE	TYPE	RANGE
WIRE	0.84 [0.033 IN]	F	32 - 28 AWG
INSUL	1.27 [0.050 IN]	0	0.50-1.00 [0.020-.040 IN]
WIRE STRIP LENGTH	APPL INSTRUCTION		
2.77-3.58 [1.09-.141 IN]	408-8322 & 408-8490		

TERMINAL	FEED
APPL SPEC 114-25003	5.38 [0.212 IN]

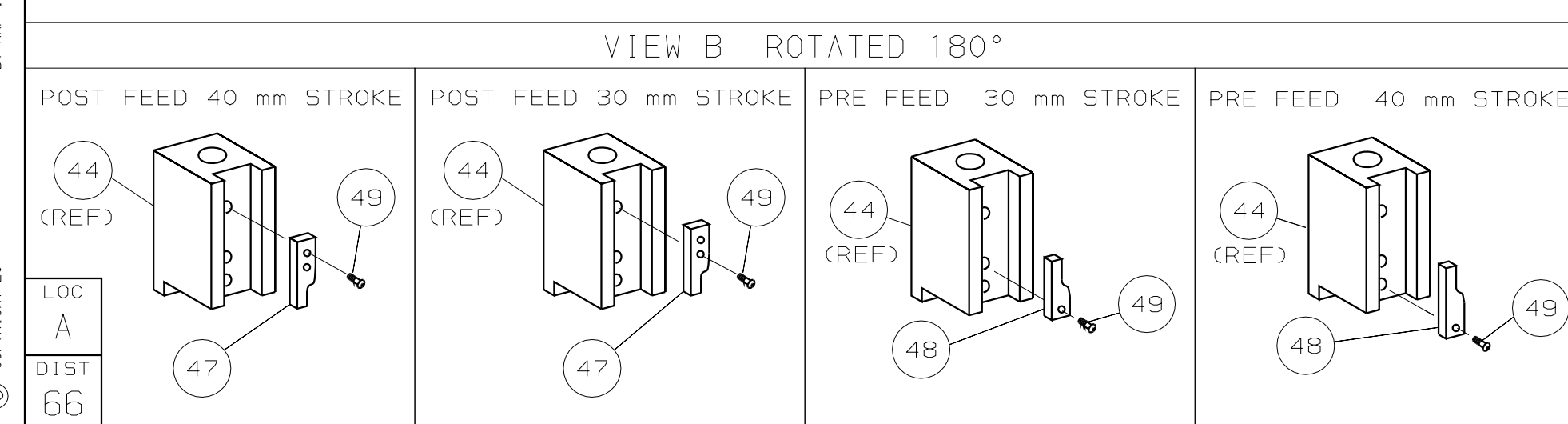
TERMINALS APPLIED

TERMINAL	REV	FIRST USED	TERMINATOR	FEED TYPE	DESCRIPTION
167020	-	-	-	-	-
167021	-	-	-	-	-
167022	-	-	-	-	-
167050	-	-	-	-	-
167051	-	-	-	-	-
-	-	-	-	-	-
-	-	-	-	-	-
-	-	-	-	-	-
-	-	-	-	-	-
-	-	-	-	-	-

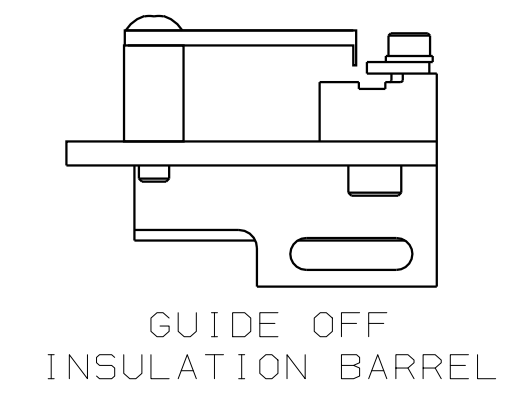
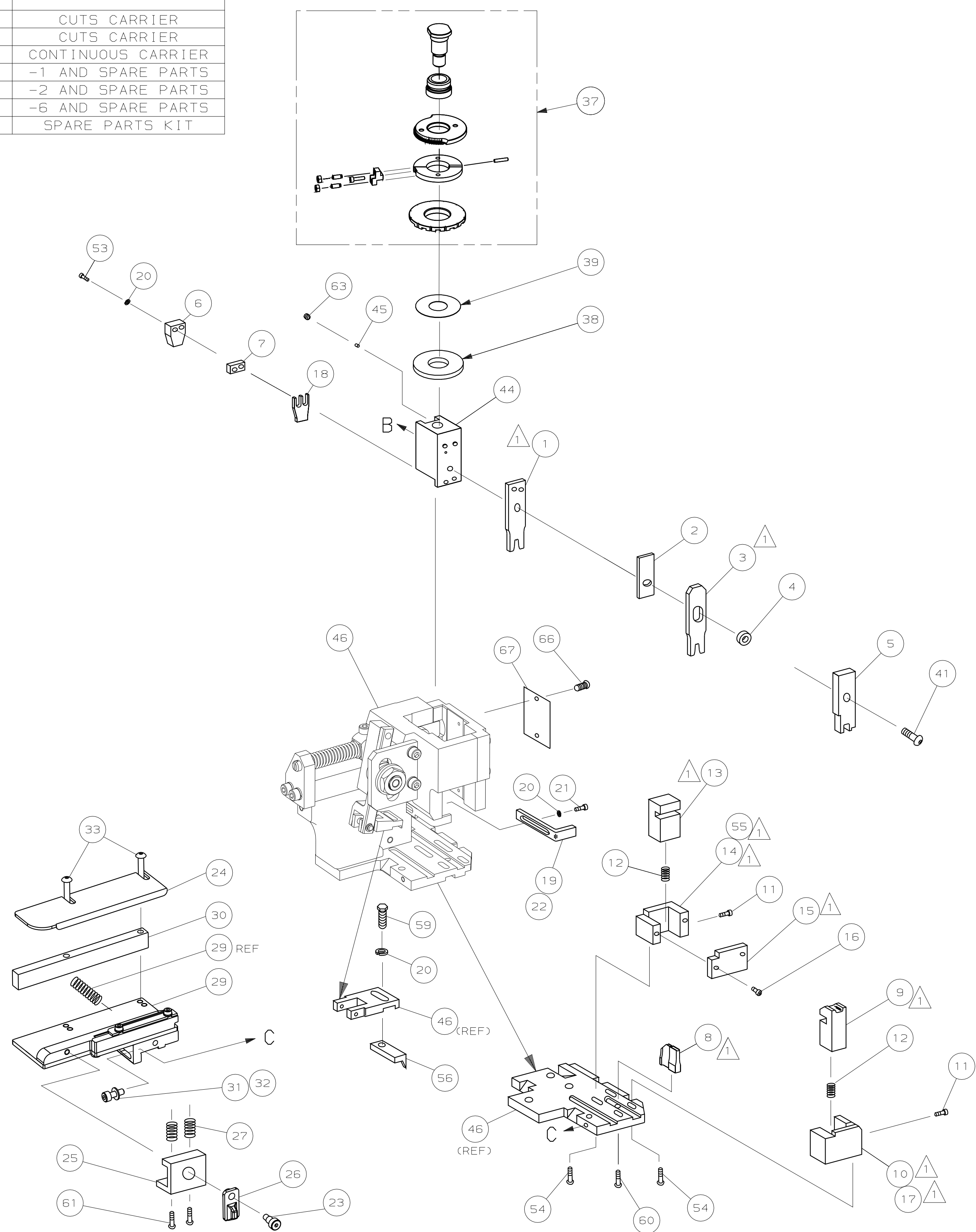
WIRE SIZE	CRIMP HEIGHT	REF SETTING
28 AWG	0.56 ±0.05 [0.022 ±0.002 IN]	D9
30 or 32 AWG	0.51 ±0.05 [0.020 ±0.002 IN]	E3

LAYOUT L1426095
SET UP GAGE 458637-3

- RECOMMENDED SPARE PARTS.
- GREASE RAM, CAM, CAM FOLLOWER AND FEED ROD LIGHTLY.
 - LUBRICATE DAILY PER THE APPLICATOR INSTRUCTION SHEET SUPPLIED WITH THE APPLICATOR.



*** WARNING:**
ON INSTALLATION, SET WIRE DISC TO LARGEST WIRE SIZE SETTING. USE OF SETTINGS BELOW MIN REQUIRED CRIMP HEIGHT SETTING WILL CAUSE DAMAGE TO CRIMP TOOLING.



QTY	REQD	PER	ASSY	PARTS LIST	DESCRIPTION	ITEM			
-	1	1	1	1	1	1	1528453	PRINT, APPLICATOR LOG SHEET	73
-	1	1	1	1	1	1	1338705-3	DOCUMENTATION PACKAGE	71
-	-	-	-	-	-	-	-	-	70
-	-	-	-	-	-	-	-	-	69
-	-	-	-	-	-	-	-	-	68
-	1	1	1	1	1	1	461264-5	PLATE, IDENTIFICATION	67
-	2	2	2	2	2	2	21017-2	SCR,DRIVE (#2x.19) ID PLATE	66
-	-	-	-	-	-	-	-	-	65
-	-	-	-	-	-	-	-	-	64
-	1	1	1	1	1	1	3-18031-0	SCR,SKT SET (M6X6)RAM	63
-	-	-	-	-	-	-	-	-	62
-	2	2	2	2	2	2	1-18024-4	SCR,BHC (M5X20) DRAG	61
-	1	1	1	1	1	1	18024-7	SCR,BHC (M4X10) ANVIL	60
-	1	1	1	1	1	1	5-18022-2	SCR,HEX (M4X8) FEED FINGER	59
-	-	-	-	-	-	-	-	-	58
-	-	-	-	-	-	-	-	-	57
-	1	1	1	1	1	1	1338685-1	PAWL, FEED	56
-	1	-	-	1	-	-	1338723-1	HOLDER,SHEAR, REAR (NO CUT)	55
-	4	4	4	4	4	4	18024-8	SCR,BHC (M4X12) SHEAR HOLDER	54
-	2	2	2	2	2	2	1-18023-3	SCR,SHC (M4X16) TERM HLD DWN	53
-	-	-	-	-	-	-	-	-	52
-	-	-	-	-	-	-	-	-	51
-	-	-	-	-	-	-	-	-	50
-	1	1	1	1	1	1	18024-3	SCR,BHC (M3X10) CAM	49
-	-	1	-	-	1	-	1338675-1	CAM, PRE FEED 30 & 40 mm ST	48
-	1	-	1	1	-	1	1338676-1	CAM, POST FEED 30 & 40 mm ST	47
-	1	1	1	1	1	1	1320999-3	APPLICATOR BASIC SUBASSY	46
-	1	1	1	1	1	1	690191-1	PLUG, NYLON	45
-	1	1	1	1	1	1	1338660-1	RAM	44
-	-	-	-	-	-	-	-	-	43
-	-	-	-	-	-	-	-	-	42
-	1	1	1	1	1	1	2-18024-6	SCR,BHC (M8X25) RAM	41
-	-	-	-	-	-	-	-	-	40
-	1	1	1	1	1	1	690125-1	SHIM SUBASSY	39
-	1	1	1	1	1	1	469367-8	SPACER, FINE ADJUST	38
-	1	1	1	1	1	1	879103-3	FINE ADJUST HEAD SUBASSY	37
-	-	-	-	-	-	-	-	-	36
-	-	-	-	-	-	-	-	-	35
-	-	-	-	-	-	-	-	-	34
-	2	2	2	2	2	2	1-18024-0	SCR,BHC (M4X20) STRIP GUIDE	33
-	1	1	1	1	1	1	18027-2	WASHER, FLAT (M4)	32
-	1	1	1	1	1	1	1-18023-2	SCR,SKT CAP (M4X12) MOUNT BLOCK	31
-	1	1	1	1	1	1	1320908-9	SPACER, STRIP GUIDE	30
-	1	1	1	1	1	1	1633073-1	STRIP GUIDE PLATE ASSY	29
-	-	-	-	-	-	-	-	-	28
-	2	2	2	2	2	2	1-22284-0	SPRING, DRAG	27
-	1	1	1	1	1	1	356835-1	LEVER, DRAG RELEASE	26
-	1	1	1	1	1	1	240792-1	DRAG, TERMINAL	25
-	1	1	1	1	1	1	1320928-1	PLATE, STRIP GUIDE	24
-	1	1	1	1	1	1	980371-4	SCR,SHC SHLD	23
-	1	-	1	1	-	1	690472-2	STRIPPER	22
-	1	1	1	1	1	1	1-18023-1	SCR,SHC (M4X10) STRIPPER	21
-	4	4	4	4	4	4	18025-2	WASHER, LOCK (M4) STRIPPER	20
-	-	1	-	-	1	-	690472-1	STRIPPER	19
-	1	1	1	1	1	1	690518-1	HOLDER, TERMINAL	18
-	1	-	-	1	-	-	1338684-1	HOLDER, SHEAR, FRONT (NO-CUT)	17
-	2	2	2	2	2	2	18023-2	SCR,SHC (M3X6) REAR SHEAR PL	16
-	1	1	1	1	1	1	1-690464-0	PLATE, SHEAR (REAR)	15
-	-	1	1	-	1	1	1320920-1	HOLDER, SHEAR, REAR (CUT)	14
-	1	1	1	1	1	1	1-690463-1	SHEAR, FLOAT (REAR)	13
-	2	2	2	2	2	2	5-22280-0	SPRING, SHEAR	12
-	2	2	2	2	2	2	356885-4	STOP, SHEAR	11
-	-	1	1	-	1	1	1320921-1	HOLDER, SHEAR, FRONT (CUT)	10
-	1	1	1	1	1	1	462006-1	SHEAR, FLOAT (FRONT)	9
1	2	2	2	1	1	1	1333200-7	ANVIL	8
-	1	1	1	1	1	1	3-240641-0	SPACER, DEPRESSOR (REAR)	7
-	1	1	1	1	1	1	690468-2	DEPRESSOR, SHEAR (REAR)	6
-	1	1	1	1	1	1	2-455889-9	DEPRESSOR, SHEAR (FRONT)	5
-	1	1	1	1	1	1	238011-7	SPACER, BLOCK CRIMPER	4
1	2	2	2	1	1	1	5-683454-4	CRIMPER, INSULATION	3
-	1	1	1	1	1	1	455888-4	SPACER, CRIMPER	2
1	2	2	2	1	1	1	456400-9	CRIMPER, WIRE	1

QTY REQD PER ASSY

REVISION OF EACH ASSY NO (WHEN BLANK, USE DWG REVISION)

PARTS LIST

DIMENSIONS: mm [INCHES] MATL

DO NOT SCALE PRINT.

TOLERANCES UNLESS OTHERWISE SPECIFIED:

1 PLC DEC ±

2 PLC DEC ±

3 PLC DEC ±

ANGLES ±

SURF TEXTURE: ✓

REMOVE BURRS, BREAK SHARP EDGES RO.38 MAX

DR L.L.OFTHOUSE 23SEP04 APP F.BACKHURST 23SEP04

CHK - REL 21-10-04 M.CLIFFORD

AMP Tyco Electronics Harrisburg, PA 17105-3808

NAME FINE ADJ SIDE FD HD-I APPL MACHINE REF HD-I APPL

SCALE - DWG NO 1528453 SHEET 1 OF 1 REV C

CAGE CODE 00779 CUSTOMER AND ASSEMBLY DRAWING

THIS DRAWING IS A CONTROLLED DOCUMENT.

LAYOUT L1426095
SET UP GAGE 458637-3

THIS DRAWING IS UNRELEASABLE.
RELEASED FOR PUBLICATION BY AMP INCORPORATED. ALL RIGHTS RESERVED.
LOC A
DIST 66
AMP 1756 REV 3-92 15-MAR-06 14:24:05 us014442 7 6 5 4 3

1528453

D

C

B

A