

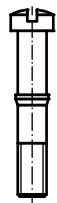

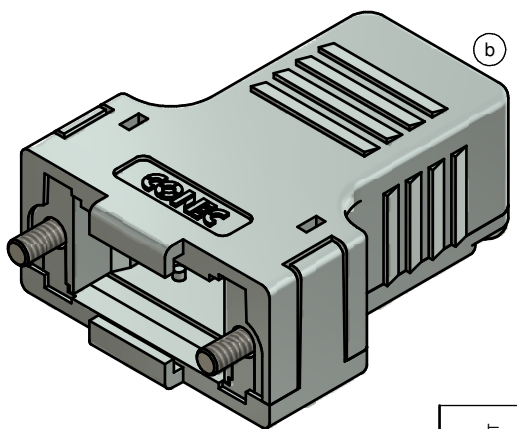
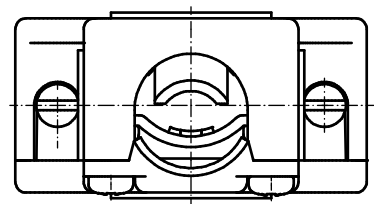


(b)

 CABLE STRAIN RELIEF (1x)	 LENS HEAD SCREW (4x)
 SHORT SCREW (2x)	 PRESS INSERT (1x)



(b)



NOTES:

1. METALHOOD+COVER: ABS UL 94 V-0; METALLIZED
2. CABLE STRAIN RELIEF: STEEL; NICKEL PLATED
3. PRESS INSERT: ABS UL 94 V-0; METALLIZED
4. SHORT SCREWS: STEEL; NICKEL PLATED
5. LENS HEAD SCREWS: STEEL; NICKEL PLATED

TECHNICAL DATA:

- TEMPERATURE RANGE: -33 °C to + 90 °C

Directive 2011/65/EU RoHS compliant

THIS DRAWING MAY NOT BE COPIED OR REPRODUCED IN ANY WAY, AND MAY NOT BE PASSED ON TO A THIRD PARTY WITHOUT WRITTEN PERMISSION. OWNERSHIP AND COPYRIGHT OF CONEC GmbH DO NOT ALTER CAD DRAWING BY HAND	tolerance		 dim. in mm		scale: 2:1	
					material: SEE NOTES	
			date	name	title:	
			drawn	03.09.14	Unkrüer	
			appd.	04.09.14	Lehmenkühler	
			norm			
		d-old	16K2A171A		dwg no:	
3 x b	Ä 5304	03.09.2014	Unkrüer			DIN-A3
a	Original			(b) 16K1A3513		sh: 1
rev.	description	date	name	part no: 165X13469X		