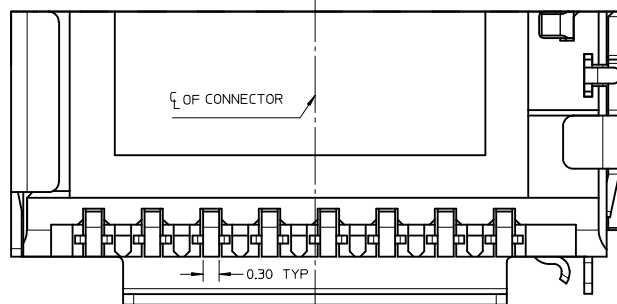


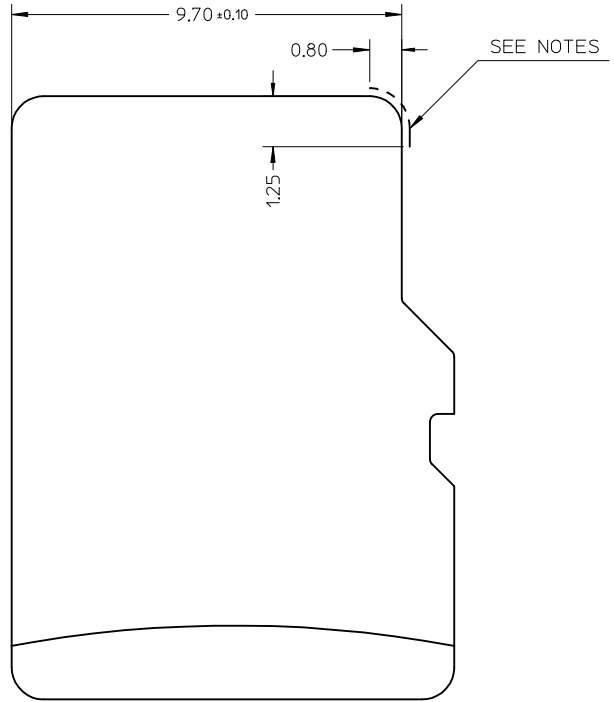
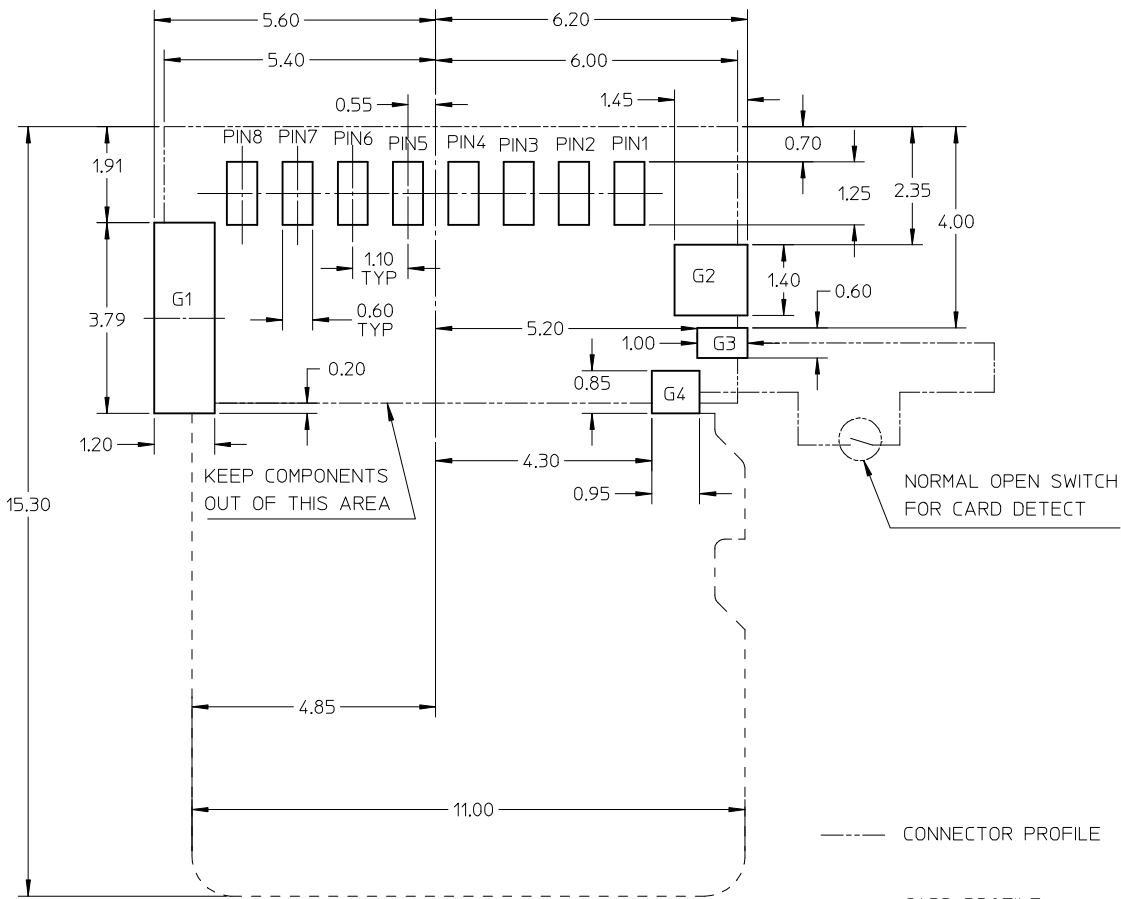
NOTES:

- MATERIAL:
 - 1-1 HOUSING: LCP, 30% G/F, UL 94V-0, BLACK
 - 1-2 SIGNAL TERMINAL AND DETECT TERMINAL: PHOSPHOR BRONZE
 - 1-3 METAL SHELL: STAINLESS STEEL
- FINISH:
 - 2-1 SIGNAL TERMINAL: 125 MICRON NICKEL MIN UNDER-PLATED, CONTACT AREA SEE TABLE, GOLD FLASH ON SOLDER AREA.
 - 2-2 METAL SHELL: GOLD FLASH PLATED OVER NICKEL ON SOLDER AREA.
 - 2-3 DETECT PIN: 125 MICRON NICKEL MIN UNDER-PLATED, GOLD FLASH ON CONTACT AREA, TIN PLATED ON SOLDER AREA.
- PRODUCT SPECIFICATION: PS-47309-001.
- PACKAGE SPECIFICATION: SEE TABLE.
- PRODUCT COMPLIANT TO RoHS DIRECTIVE 2002/95/EC AND ELV 2000/53/EC.



| PART NUMBER | DIM A | DIM B | CONTACT AREA PLATING | PACKAGE SPECIFICATION |
|-------------|-------|-------|-----------------------|-----------------------|
| 47309-0375 | 3.75 | 2.55 | 0.38 MICRON MIN. GOLD | PK-47309-375 |
| 47309-3751 | | | 0.76 MICRON MIN. GOLD | |
| 47309-8751 | | | 0.1 MICRON MIN. GOLD | |
| 47309-0355 | 3.55 | 2.35 | 0.38 MICRON MIN. GOLD | PK-47309-335 |
| 47309-3551 | | | 0.76 MICRON MIN. GOLD | |
| 47309-8551 | | | 0.1 MICRON MIN. GOLD | |
| 47309-0335 | 3.35 | 2.15 | 0.38 MICRON MIN. GOLD | PK-47309-265 |
| 47309-3351 | | | 0.76 MICRON MIN. GOLD | |
| 47309-8351 | | | 0.1 MICRON MIN. GOLD | |
| 47309-0285 | 2.85 | 1.65 | 0.38 MICRON MIN. GOLD | PK-47309-265 |
| 47309-2851 | | | 0.76 MICRON MIN. GOLD | |
| 47309-8851 | | | 0.1 MICRON MIN. GOLD | |
| 47309-0265 | 2.65 | 1.45 | 0.38 MICRON MIN. GOLD | PK-47309-265 |
| 47309-2651 | | | 0.76 MICRON MIN. GOLD | |
| 47309-8651 | | | 0.1 MICRON MIN. GOLD | |

| ADD NEW PART EC NO: SH2012-0261 DRAWN: GLLI CHKD: APPR: AYIN REV: | DESCRIPTION 2012/02/10 2012/02/23 | QUALITY SYMBOLS ▽=0 ▽=0 ▽=0 | | GENERAL TOLERANCES (UNLESS SPECIFIED) <table border="1"> <thead> <tr> <th></th> <th>mm</th> <th>INCH</th> </tr> </thead> <tbody> <tr> <td>4 PLACES</td> <td>± ---</td> <td>± ---</td> </tr> <tr> <td>3 PLACES</td> <td>± ---</td> <td>± ---</td> </tr> <tr> <td>2 PLACES</td> <td>± 0.15</td> <td>± ---</td> </tr> <tr> <td>1 PLACE</td> <td>± 0.25</td> <td>± ---</td> </tr> <tr> <td colspan="2">ANGULAR</td> <td>± 3 °</td> </tr> </tbody> </table> | | | mm | INCH | 4 PLACES | ± --- | ± --- | 3 PLACES | ± --- | ± --- | 2 PLACES | ± 0.15 | ± --- | 1 PLACE | ± 0.25 | ± --- | ANGULAR | | ± 3 ° | DIMENSION STYLE MM ONLY | | SCALE 1:1 | | DESIGN UNITS METRIC | | THIRD ANGLE PROJECTION | |
|---|---|--|-------|---|--|--|----|----------------------------------|----------|-------------------------------------|-------|----------|-------|-------|----------|--------|-------|---------|--------|-------|---------|--|-------|-----------------------------------|--|--------------|--|-------------------------------|--|------------------------|--|
| | | | mm | INCH | | | | | | | | | | | | | | | | | | | | | | | | | | | |
| | | 4 PLACES | ± --- | ± --- | | | | | | | | | | | | | | | | | | | | | | | | | | | |
| | | 3 PLACES | ± --- | ± --- | | | | | | | | | | | | | | | | | | | | | | | | | | | |
| 2 PLACES | ± 0.15 | ± --- | | | | | | | | | | | | | | | | | | | | | | | | | | | | | |
| 1 PLACE | ± 0.25 | ± --- | | | | | | | | | | | | | | | | | | | | | | | | | | | | | |
| ANGULAR | | ± 3 ° | | | | | | | | | | | | | | | | | | | | | | | | | | | | | |
| DRAWN BY: GLLI DATE: 2012/02/10 | | CHECKED BY: XQ ZHANG DATE: 2012/02/10 | | APPROVED BY: AYIN DATE: 2012/02/23 | | TITLE TFR HEADER WITH DETECT PIN | | MATERIAL NO. SEE TABLE | | DOCUMENT NO. SD-47309-001 | | | | | | | | | | | | | | | | | | | | | |
| DRAFT WHERE APPLICABLE MUST REMAIN WITHIN DIMENSIONS | | SIZE A2 | | THIS DRAWING CONTAINS INFORMATION THAT IS PROPRIETARY TO MOLEX INCORPORATED AND SHOULD NOT BE USED WITHOUT WRITTEN PERMISSION | | | | | | | | | | | | | | | | | | | | | | | | | | | |
| SHEET NO. 1 OF 2 | | | | | | | | | | | | | | | | | | | | | | | | | | | | | | | |



TFR CARD

--- CONNECTOR PROFILE
 - - - - - CARD PROFILE

RECOMMENDED PCB LAYOUT
 TOLERANCE FOR PCB LAYOUT : ±0.05

NOTES:
 NO CONDUCTIVE EXPOSURE TRACE IS ALLOWED ON THE SIDE FACE OF THE CARD AT THIS AREA.

| | |
|----------------|---------|
| G4 | DET |
| G3 | POL |
| G2 | GND |
| G1 | GND |
| P8 | DAT1 |
| P7 | DAT0 |
| P6 | VSS |
| P5 | CLK |
| P4 | VDD |
| P3 | CMD |
| P2 | CD/DAT3 |
| P1 | DAT2 |
| NAME | TYPE |
| PIN ASSIGNMENT | |

| | | | | | | | | |
|---|---|-------------------------------|--|---|------------------------------|---------------------|------------------------|--|
| SEE SHEET 1 EC NO: SH2012-0261 DRAWING: GLL1 CH'KD: APPR: AYIN REV | DESCRIPTION 2012/02/10 2012/02/23 | QUALITY SYMBOLS | GENERAL TOLERANCES (UNLESS SPECIFIED) | DIMENSION STYLE | SCALE | DESIGN UNITS | THIRD ANGLE PROJECTION | |
| | | $F_A=0$ $F_C=0$ $F_P=0$ | mm INCH 4 PLACES ± --- ± --- 3 PLACES ± --- ± --- 2 PLACES ± 0.15 ± --- 1 PLACE ± 0.25 ± --- ANGULAR ± 3 ° | MM ONLY | 1:1 | METRIC | | |
| | | | DRAFT WHERE APPLICABLE MUST REMAIN WITHIN DIMENSIONS | DRAWN BY: GLL1 DATE: 2012/02/10 CHECKED BY: XQ ZHANG DATE: 2012/02/10 APPROVED BY: AYIN DATE: 2012/02/23 | TFR HEADER WITH DETECT PIN | | | |
| | | | SEE SHEET 1 | MATERIAL NO. MOLEX INCORPORATED | DOCUMENT NO. SD-47309-001 | SHEET NO. 2 OF 2 | | |