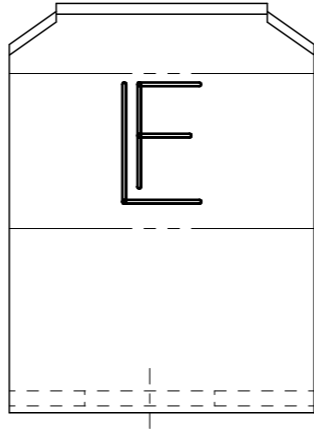
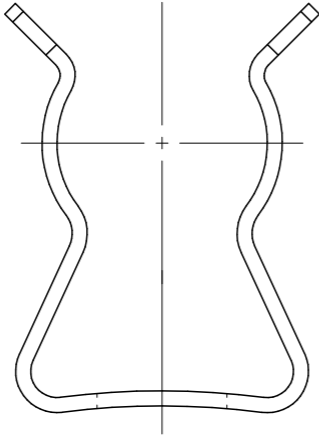
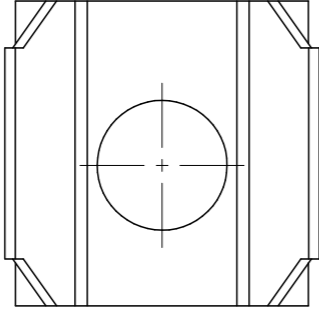


MATERIAL	PLATING	NOM. PLATING WT. (GRS)	VENDOR
BRASS	NICKEL /COPPER	Ni = .015: Cu = .003	FORMCO



NOTE:

FUSE CLIP 104012
 BRIGHT NICKEL PLATED
 .0001 MIN.

UNLESS OTHERWISE SPECIFIED, DIMENSIONS DO NOT INCLUDE PLATING.
 CPK DENOTES CRITICAL CHARACTERISTICS.
 CPK DENOTES CPK DIMENSIONS, -MINIMUM CPK VALUE
 (S) DENOTES A CHARACTERISTIC THAT PROVIDES AN INDICATION OF PROCESS PERFORMANCE. PROCEDURE FOR MEASUREMENT AND TRACKING TO BE DEFINED IN ATTLEFUSE INSPECTION INSTRUCTIONS.
 CP DENOTES CP DIMENSIONS, -MINIMUM CP VALUE (MUST BE WITHIN THE DIMENSIONAL LIMITATIONS SHOWN ON DRAWING AND INITIALLY LOCATED TO ALLOW FOR MAXIMUM TOOL LIFE.

2	010104	NICKEL ANODE	.038	LB
1	104012	FUSE CLIP	1000	EA
NO	COMPONENT NO	DESCRIPTION	QTY/M	U/M

BILL OF MATERIAL

COPIES TO		MATERIAL SPEC		FINISH		SEE NOTE	
1	9	DRW	PJM	DATE	08/02/02	SCALE	4:1
2	10	CHK		DATE		SUPER DRW	
3	12	APPD		DATE		RAW STK WT	
4	13						
5	14						
6	15						
7	16						
8	17						
	18						
	19						
	20						
	21						
	22						
	23						
	24						
	25						
	26						
	27						
	28						

TOLERANCE UNLESS OTHERWISE SPECIFIED
 TWO PLACE DEC ±.01 FRACTION ±
 THREE PLACE DEC ±.005 ANGULAR ±1°

TITLE

FUSE CLIP	
REVISION	DRWG. NO.
E	01040002Z
	FINAL

