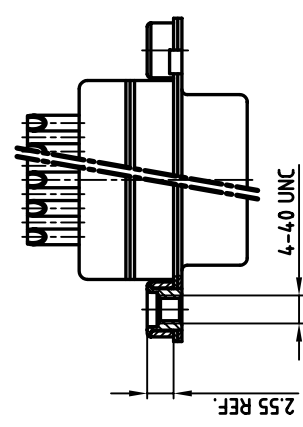
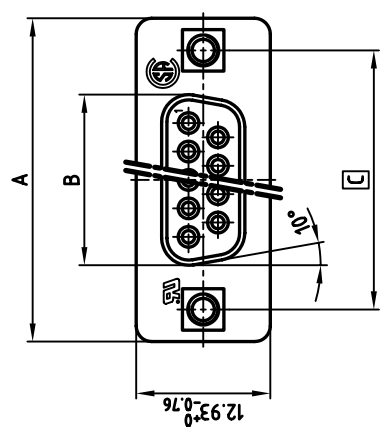
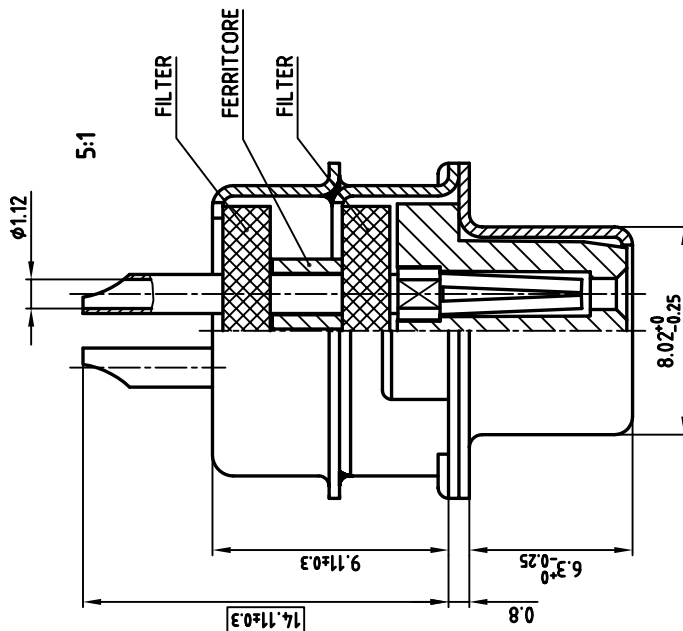


used for: D-SUB TT FILTER



NOTES:

1. METALSHELLS: STEEL; min. 320µ" TIN
2. INSULATORS: PBT GF UL 94 V-0, BLACK
3. CONTACTS: COPPER ALLOY
4. PLATING: min. .8µ" HARD GOLD OVER min. 50µ" NICKEL
SOLDER CUP ACCEPTS CABLE AWG 20
5. THREADED INSERT: COPPER ALLOY; min. 200µ" TIN over 80µ" NICKEL
6. COLLAR: COPPER ALLOY; min. 200µ" TIN over 80µ" NICKEL
7. CAPACITANCE: 2 x 830pF ±20%
8. MAXIMUM TORQUE VALUE FOR THREAD: 6" LBS
9. = CRITICAL DIMENSION: SPC

THIS DRAWING MAY NOT BE COPIED OR REPRODUCED IN ANY WAY, AND MAY NOT BE PASSED ON TO A THIRD PARTY WITHOUT WRITTEN PERMISSION.
OWNERSHIP AND COPYRIGHT OF CONEC GMBH DO NOT ALTER CAD DRAWING BY HAND

No. of pos.	A ^{-0.76}	B ^{-0.25}	C	Part No.
9	31.19	16.46	25.00 ^{+0.12} _{-0.13}	242A29220X
15	39.52	24.79	33.30 ^{+0.15} _{-0.1}	242A29230X
25	53.42	38.50	47.04 ^{+0.13}	242A29240X
37	69.70	54.96	63.50 ^{+0.13}	242A29250X

rev.	description	date	name

CONEC CORPORATION BRAMPTON, ONTARIO		tolerance	2:1 (5:1)
scale:		material:	SEE NOTES
title:		D-SUB TT FILTER FEMALE	
SOLDER CUP 9-37pos. with threaded insert		AutoCAD 2000	
dwg no:		DIN-A	
24K1A014A		3	
product no:		sh: 1/1	
SEE TABLE		SEE TABLE	

