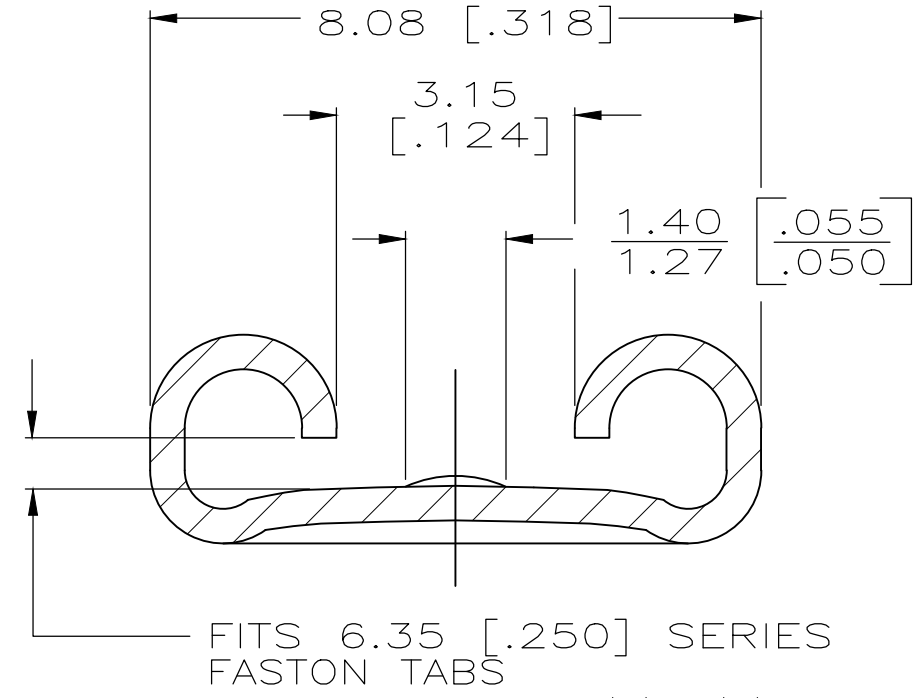
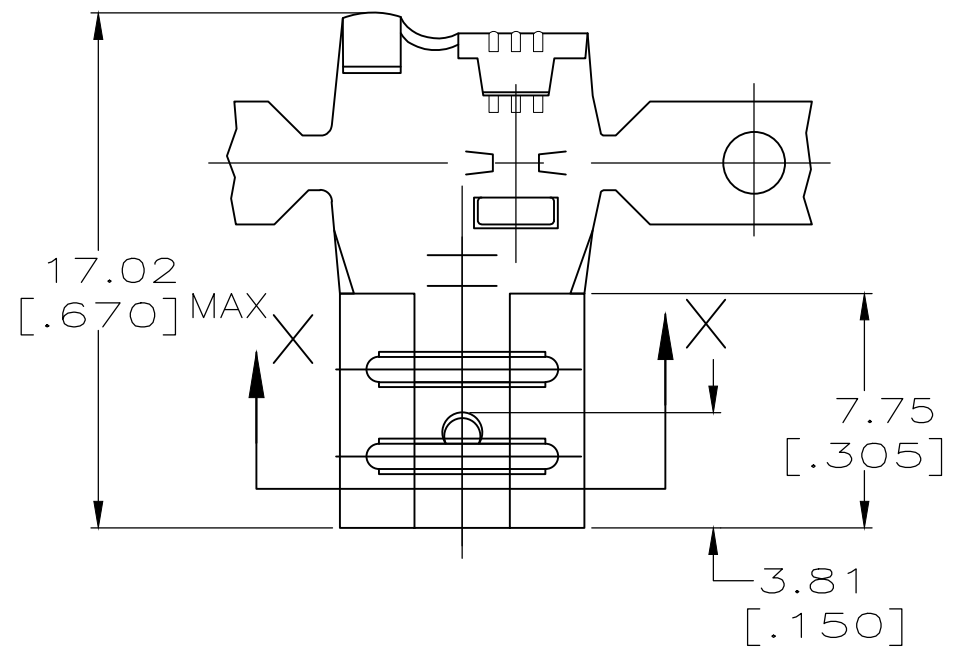


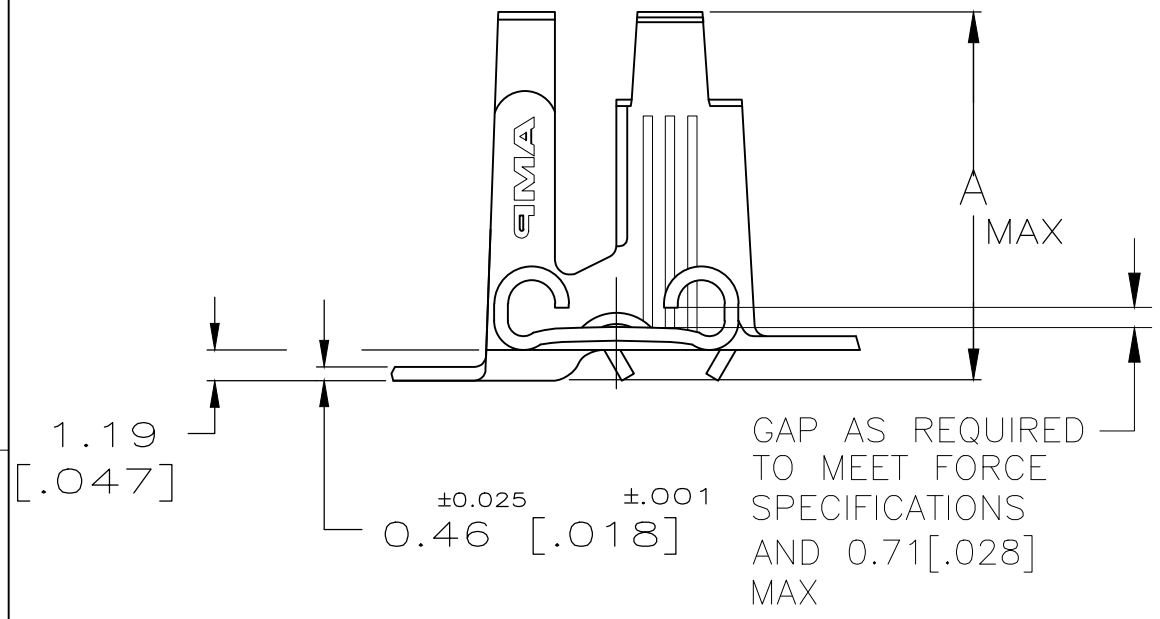
THIS DRAWING IS UNPUBLISHED. RELEASED FOR PUBLICATION  
 © COPYRIGHT - By - ALL RIGHTS RESERVED.

REVISIONS					
P	LTR	DESCRIPTION	DATE	DWN	APVD
AD1		REVISED ECR-18-011675	23JUL2018	BH	RP
AD2		REVISED PER ECR-20-009164	14JUL2020	MK	DH



SECTION X-X  
SCALE 10:1

- 1 CONTINUOUS STRIP ON REELS.
- △2 FOREIGN PRODUCTION ONLY
- △3 SILVER PL 0.00381 [.000150] MIN
- △5 NICKEL PL 0.00381 [.000150] MIN



DIM A	INSULATION RANGE	WIRE RANGE	MATING TAB THK	FINISH	MATERIAL	PART NO
12.19 [.480]		3.0-5.0mm <sup>2</sup> [12-10] AWG 6000-10600 CMA		NICKEL △5	T2 STEEL	42563-9
				TIN	T3 PHOS BRZ	42563-8
				SILVER △3	T3 PHOS BRZ	42563-6
				SILVER △3	T3 PHOS BRZ	<del>42563-7</del>
				TIN	T3 PHOS BRZ	<del>42563-5</del>
				-	T3 PHOS BRZ	<del>42563-4</del>
				SILVER △3	#4H BRASS	<del>42563-3</del>
				TIN	#4H BRASS	42563-2
				-	#4H BRASS	<del>42563-1</del>

THIS DRAWING IS A CONTROLLED DOCUMENT.

DWN	JR RUTH	2/14/91	<b>STE</b> TE Connectivity Ltd.			
CHK	P FORTNEY	2/14/91				
APVD	C MEYERS	2/14/91				
PRODUCT SPEC	D REINER	2/14/91				
APPLICATION SPEC			NAME			
			RECEPTACLE, FASTON, FLAG, 6.35 [.250] SERIES			
MATERIAL		FINISH	SIZE	CAGE CODE	DRAWING NO	RESTRICTED TO
SEE TABLE		SEE TABLE	A3	00779	C-42563	-
CUSTOMER DRAWING			SCALE	SHEET	REV	
			4:1	1 OF 1	AD2	