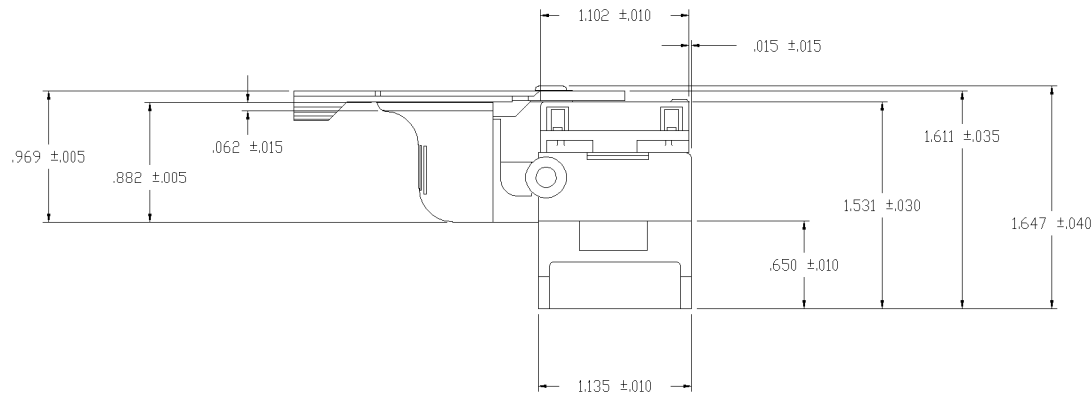
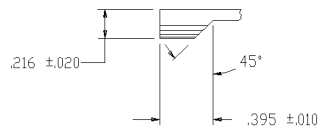
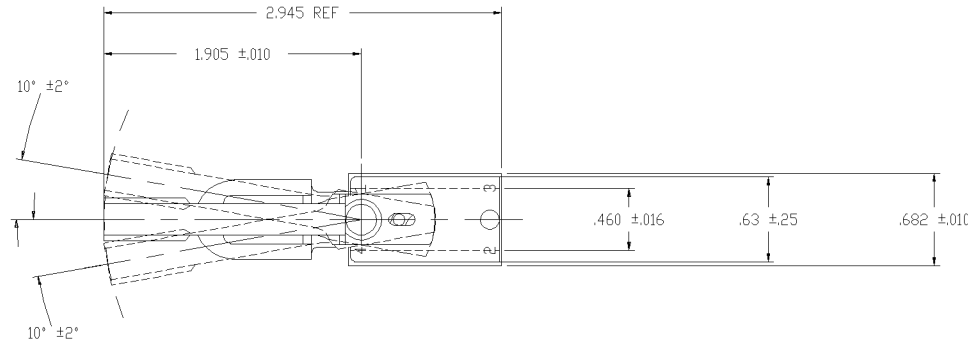
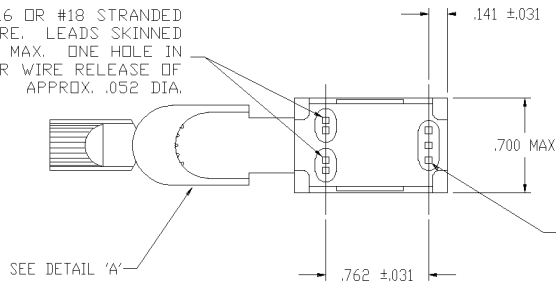


THIS DRAWING IS UNPUBLISHED. RELEASED FOR PUBLICATION
 © COPYRIGHT BY TYCO ELECTRONICS CORPORATION. ALL RIGHTS RESERVED.

LOC	DIST	REVISIONS					
AD	00	#	LTR	DESCRIPTION	DATE	OWN	APVD
		C		ECOG3G-0070-03	17NOV03	MB	RB

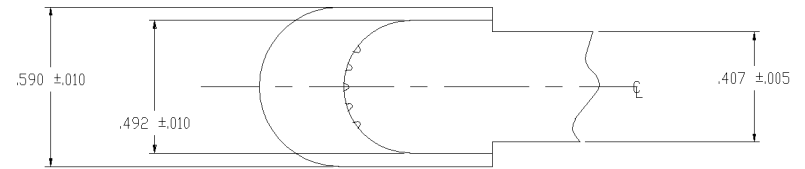


2 HOLES FOR #16 OR #18 STRANDED TIN DIPPED WIRE. LEADS SKINNED .250 MIN TO .312 MAX. ONE HOLE IN EACH RECESS FOR WIRE RELEASE OF APPROX. .052 DIA.



2 OUTER HOLES FOR #16 OR #18 STRANDED, TIN DIPPED WIRE. LEADS TO BE SKINNED .250 MIN TO .375 MAX. CENTER HOLE IS FOR WIRE RELEASE OF APPROX. .052 DIA.

1. LEAD STRIP LENGTH FOR REVERSING SWITCH TO BE .250 +.032 -.016.
2. 3 RECESSES IN BASE WILL ACCEPT MAX DIMENSION OF .120 DIA. (OVER INSULATION).



DETAIL A

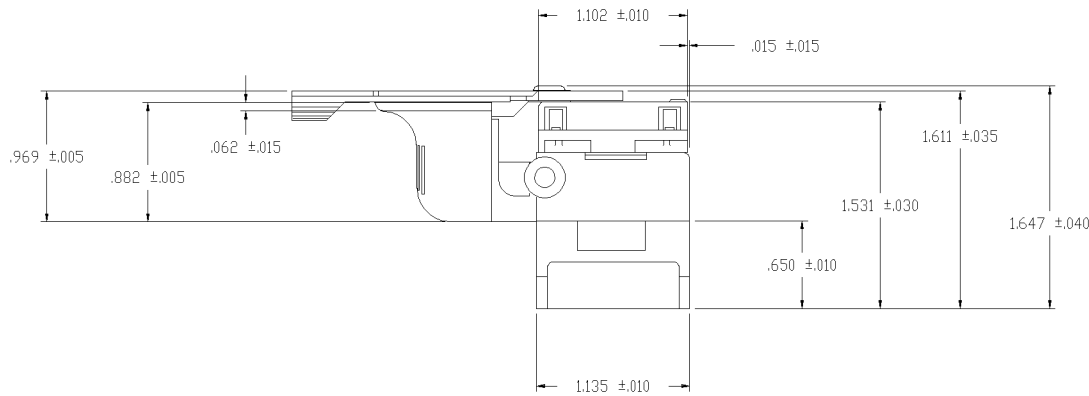
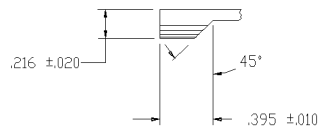
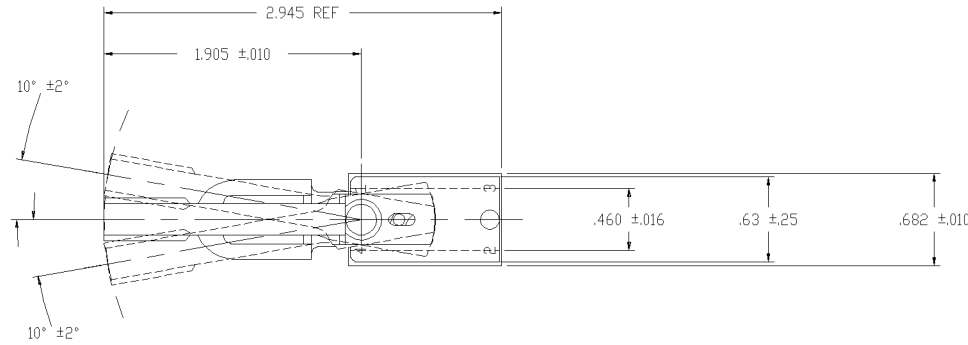
TYCO NO. 1520265-3 (ARAB NO. 8907K216) TYCO NO. 1520265-4 (ARAB NO. 8907K220) ~~TYCO NO. 1-1520265-2 (ARAB NO. 8907K436)~~

90-14583

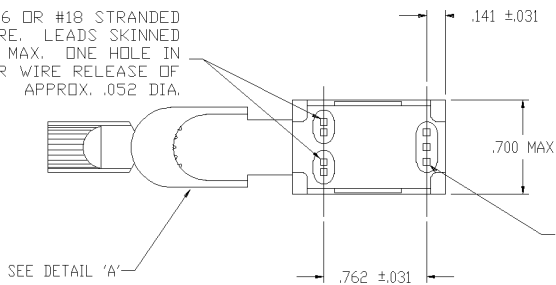
THIS DRAWING IS A CONTROLLED DOCUMENT.		DWN W. Leonard	30JUN88	tyco Electronics	Tyco Electronics Corporation Arab, AL 35016		
DIMENSIONS: INCHES		CHK E. WESOLEK	08JUL88		APVD N. COLEMAN	NAME UTILITY TRIGGER TOOL HANDLE SWITCH WITH REVERSING	
TOLERANCES UNLESS OTHERWISE SPECIFIED:		PRODUCT SPEC		APPLICATION SPEC		RESTRICTED TO	
0 PLC ± -		1 PLC ± -		2 PLC ± -		3 PLC ± -	
4 PLC ± -		ANGLES ± -		FINISH		WEIGHT	
MATERIAL		SCALE		SHEET		REV	
-		1:1		1 OF 10		C	
CUSTOMER DRAWING		SIZE CAGE CODE DRAWING NO		A2 00779 C-1520265		-	

THIS DRAWING IS UNPUBLISHED. RELEASED FOR PUBLICATION
 © COPYRIGHT BY TYCO ELECTRONICS CORPORATION. ALL RIGHTS RESERVED.

LOC		DIST		REVISIONS			
P	LTR	DESCRIPTION	DATE	OWN	APVD		
AD	00	SEE SHEET 1	-	-	-		

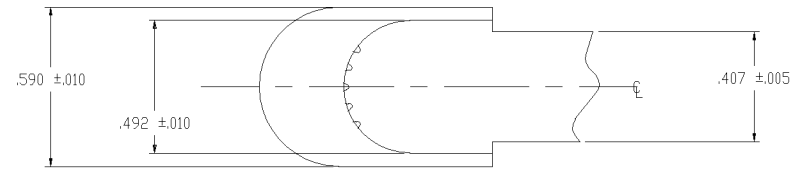


2 HOLES FOR #16 OR #18 STRANDED TIN DIPPED WIRE. LEADS SKINNED .250 MIN TO .312 MAX. ONE HOLE IN EACH RECESS FOR WIRE RELEASE OF APPROX. .052 DIA.



2 OUTER HOLES FOR #16 OR #18 STRANDED, TIN DIPPED WIRE. LEADS TO BE SKINNED .250 MIN TO .375 MAX. CENTER HOLE IS FOR WIRE RELEASE OF APPROX. .052 DIA.

1. LEAD STRIP LENGTH FOR REVERSING SWITCH TO BE .250 +.032 -.016.
2. 3 RECESSES IN BASE WILL ACCEPT MAX DIMENSION OF .120 DIA. (OVER INSULATION).



DETAIL A

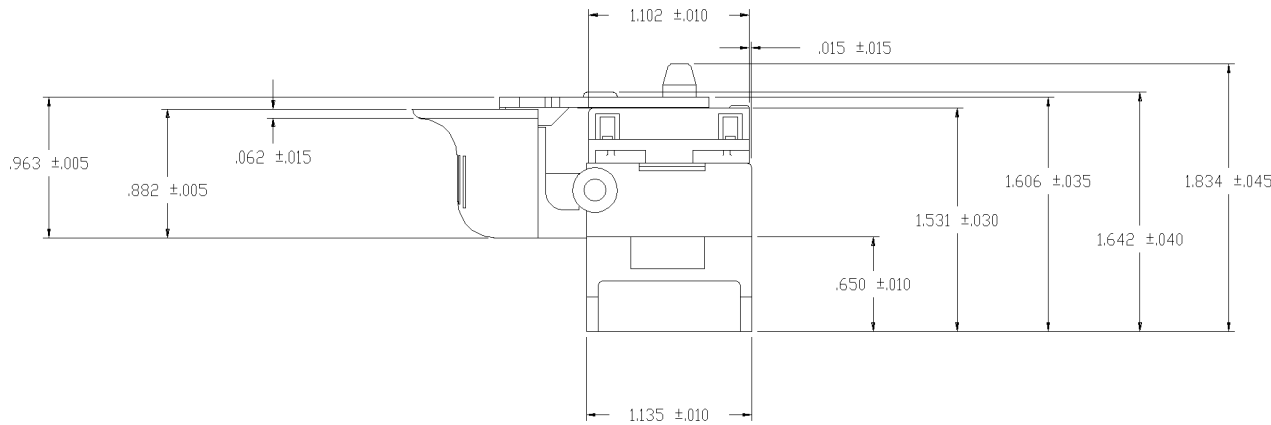
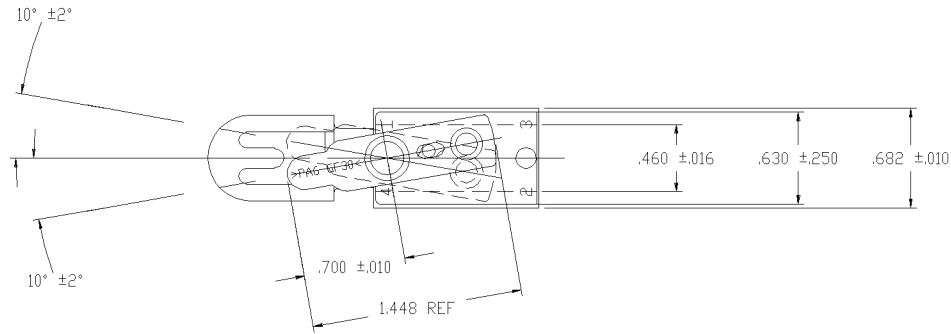
TYCO NO. 1520265-2
(ARAB NO. 8332K7)

91-545

THIS DRAWING IS A CONTROLLED DOCUMENT.		DWN: W. HANSON 27SEP95 CHK: T. CHRISTENSEN 27SEP95 APVD: M.R. DUMMER 27SEP95	tyco Electronics Tyco Electronics Corporation Arab, AL 35016
DIMENSIONS: INCHES 	TOLERANCES UNLESS OTHERWISE SPECIFIED: 0 PLD ± - 1 PLD ± - 2 PLD ± - 3 PLD ± - 4 PLD ± - ANGLES ± - FINISH -	NAME: M.R. DUMMER PRODUCT SPEC: APPLICATION SPEC: WEIGHT: -	UTILITY TRIGGER TOOL HANDLE SWITCH WITH REVERSING 12A 125 VAC / 6A 250 VAC / 14A 12 VDC SIZE: A2 CAGE CODE: 00779 DRAWING NO: C-1520265 RESTRICTED TO: -
MATERIAL: -		CUSTOMER DRAWING	SCALE: 1:1 SHEET: 2 OF 10 REV: C

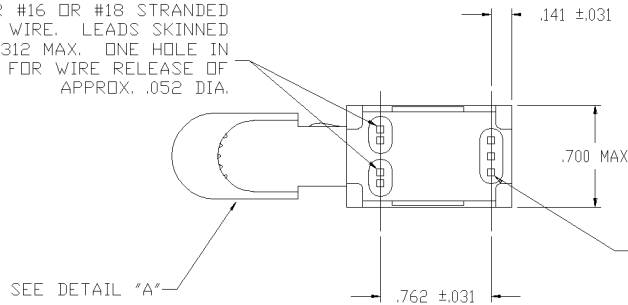
THIS DRAWING IS UNPUBLISHED. RELEASED FOR PUBLICATION
 © COPYRIGHT BY TYCO ELECTRONICS CORPORATION. ALL RIGHTS RESERVED.

LOC	DIST	REVISIONS					
AD	00	P	LTR	DESCRIPTION	DATE	OWN	APVD
		-		SEE SHEET 1	-	-	-

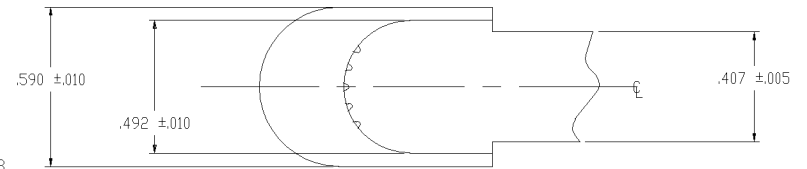


1. LEAD STRIP LENGTH FOR REVERSING SWITCH TO BE .188 - .250.
2. 3 RECESSES IN BASE WILL ACCEPT MAX DIMENSION OF .120 DIA. (OVER INSULATION).

2 HOLES FOR #16 OR #18 STRANDED TIN DIPPED WIRE. LEADS SKINNED .250 MIN TO .312 MAX. ONE HOLE IN EACH RECESS FOR WIRE RELEASE OF APPROX. .052 DIA.



2 OUTER HOLES FOR #16 OR #18 STRANDED, TIN DIPPED WIRE. LEADS TO BE SKINNED .250 MIN TO .375 MAX. CENTER HOLE IS FOR WIRE RELEASE OF APPROX. .052 DIA.



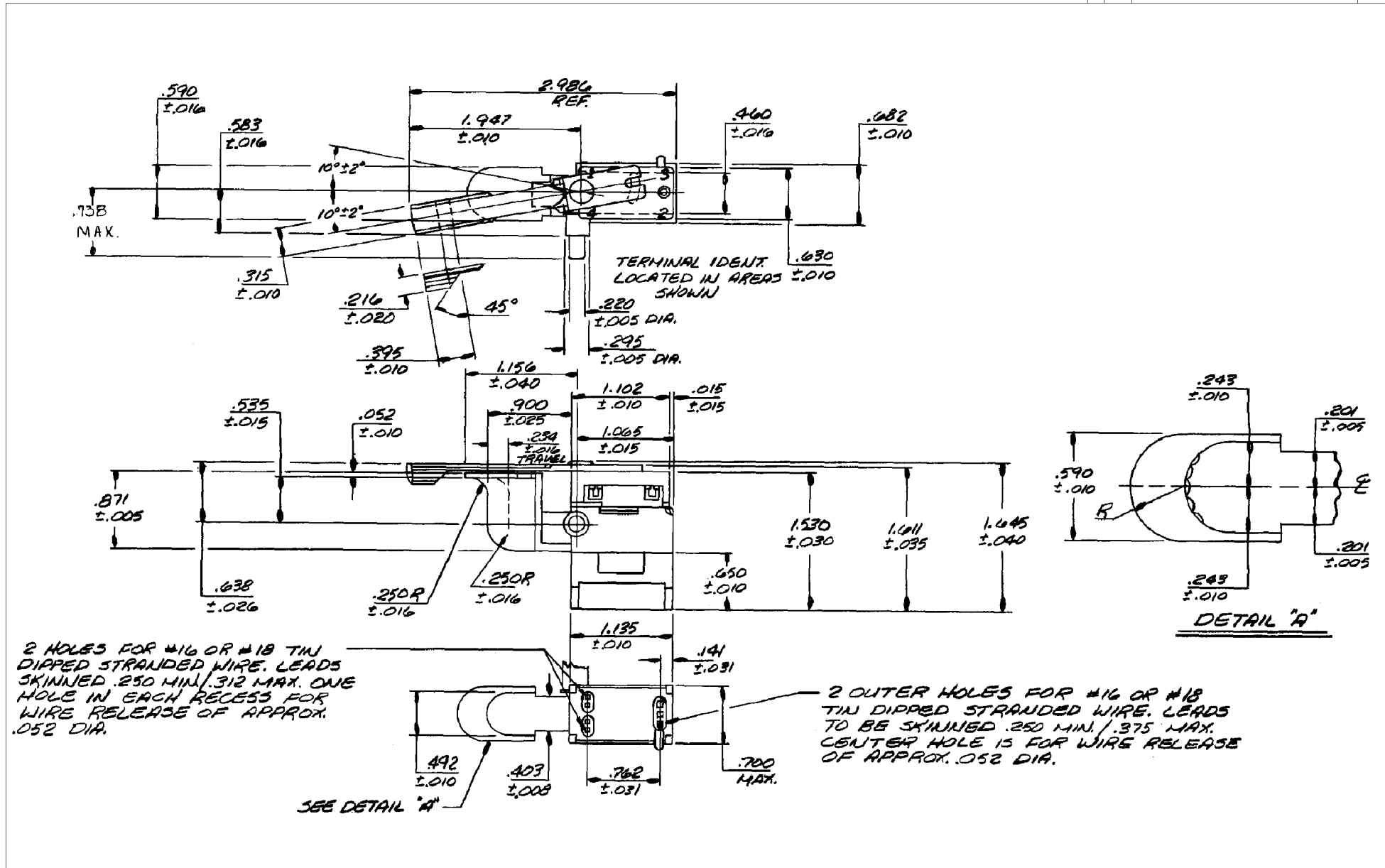
DETAIL A

91-628

THIS DRAWING IS A CONTROLLED DOCUMENT.		DWN W. HANSON 27SEP95	 Tyco Electronics Corporation Arab, AL 35016
DIMENSIONS: INCHES		CHK T. CHRISTENSEN 27SEP95	
TOLERANCES UNLESS OTHERWISE SPECIFIED:		APVD M.R. DUMMER 27SEP95	NAME UTILITY TRIGGER TOOL HANDLE SWITCH WITH REVERSING (SPECIAL REVERSING LEVER) 6A 125 VAC / 3A 250 VAC
0 PLC ± -	1 PLC ± -	PRODUCT SPEC	SIZE A2
2 PLC ± -	3 PLC ± -	APPLICATION SPEC	CAGE CODE 00779
4 PLC ± -	ANGLES ± -	FINISH	DRAWING NO C-1520265
MATERIAL		WEIGHT	RESTRICTED TO
		CUSTOMER DRAWING	SCALE 1:1 SHEET 3 OF 10 REV C

TYCO NO. 1-1520265-6
 (ARAB NO. 8907K7)

LOC		DIST		REVISIONS			
AD	00	F	LTR	DESCRIPTION	DATE	OWN	APVD
				SEE SHEET 1			



1. LEAD STRIP LENGTH FOR REVERSING SWITCH TO BE .250 +.032 -.016.
2. 3 RECESSES IN BASE WILL ACCEPT MAX DIMENSION OF .120 DIA. (OVER INSULATION).

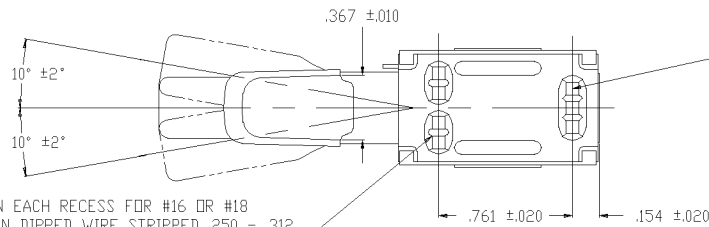
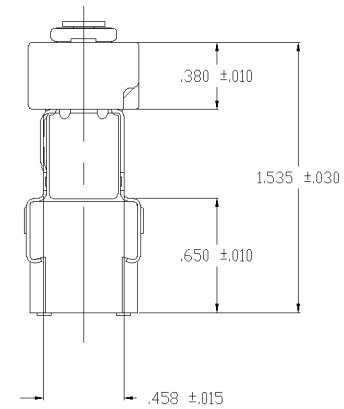
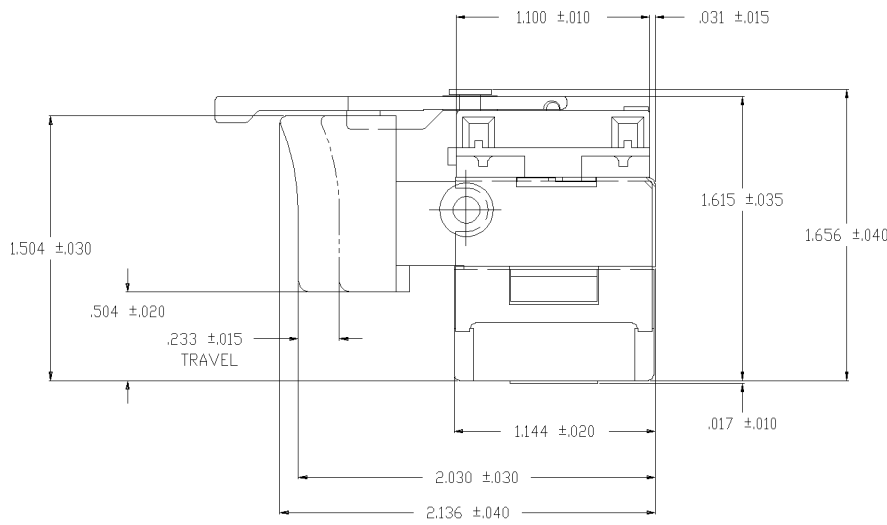
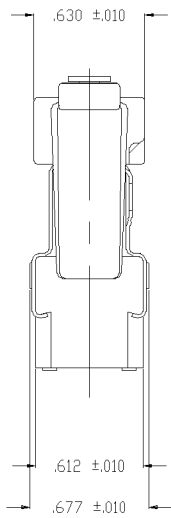
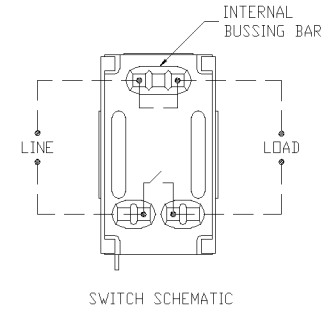
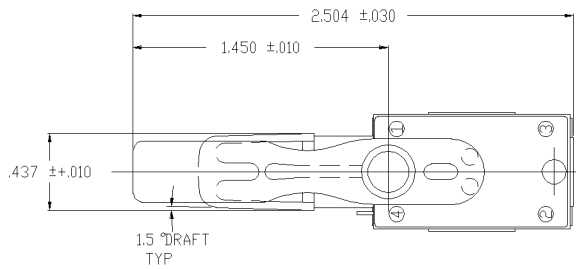
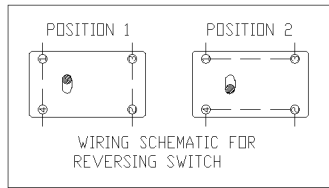
TYCO NO. 1520265-9 TYCO NO. 1-1520265-3 TYCO NO. 1-1520265-4
 (ARAB NO. 8907K370) (ARAB NO. 8907K472) (ARAB NO. 8907K495)

90-11809

THIS DRAWING IS A CONTROLLED DOCUMENT.		DWI B. THOMPSON 12JAN83	tyco Electronics		Tyco Electronics Corporation Arab, AL 35016
DIMENSIONS: INCHES		CHK B. THOMPSON 12JAN83	NAME UTILITY TRIGGER TOOL HANDLE SWITCH WITH REVERSING 6A 125 VAC / 3A 250 VAC		
TOLERANCES UNLESS OTHERWISE SPECIFIED: 0 PLC ± - 1 PLC ± - 2 PLC ± - 3 PLC ± - 4 PLC ± - ANGLES ± - FINISH		APVD P. YANCEY 12JAN83	PRODUCT SPEC		
MATERIAL		APPLICATION SPEC		SIZE A2	CAGE CODE 00779
		WEIGHT		DRAWING NO. C-1520265	
		CUSTOMER DRAWING		SCALE 1:1	SHEET 4 OF 10
				REV C	

THIS DRAWING IS UNPUBLISHED. RELEASED FOR PUBLICATION
 © COPYRIGHT BY TYCO ELECTRONICS CORPORATION. ALL RIGHTS RESERVED.

LOC		DIST		REVISIONS			
#	LTR	DESCRIPTION	DATE	OWN	APVD		
AD	00	SEE SHEET 1	-	-	-		



ONE HOLE IN EACH RECESS FOR #16 OR #18 STRANDED TIN DIPPED WIRE STRIPPED .250 - .312.
 ONE HOLE IN EACH RECESS FOR .052 DIA. WIRE RELEASE.

TWO OUTER HOLES FOR #16 OR #18 STRANDED TIN DIPPED WIRE STRIPPED .250 - .375.
 CENTER HOLE FOR .052 DIA. WIRE RELEASE.

1. LEAD STRIP LENGTH FOR REVERSING SWITCH TO BE .250 +.032 -.016.
2. 3 RECESSES IN BASE WILL ACCEPT MAX DIMENSION OF .120 DIA. (OVER INSULATION).

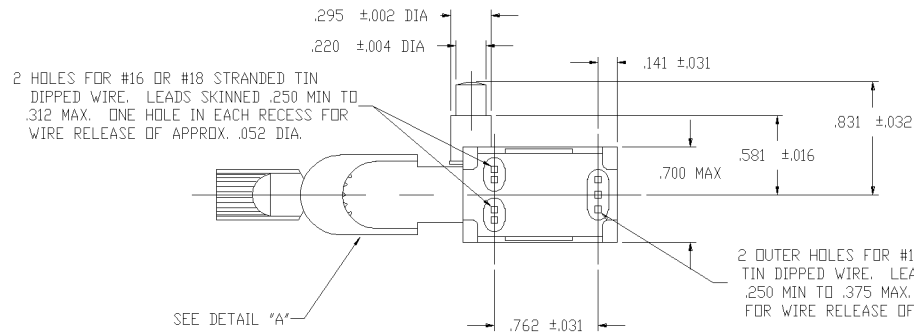
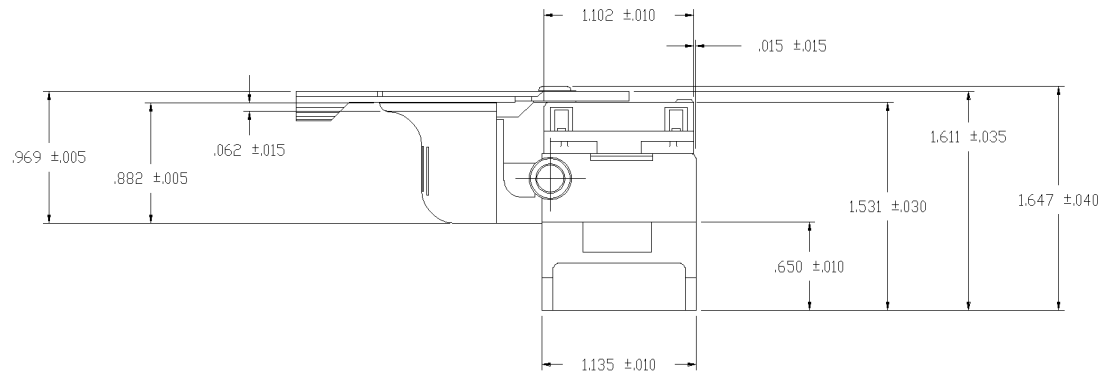
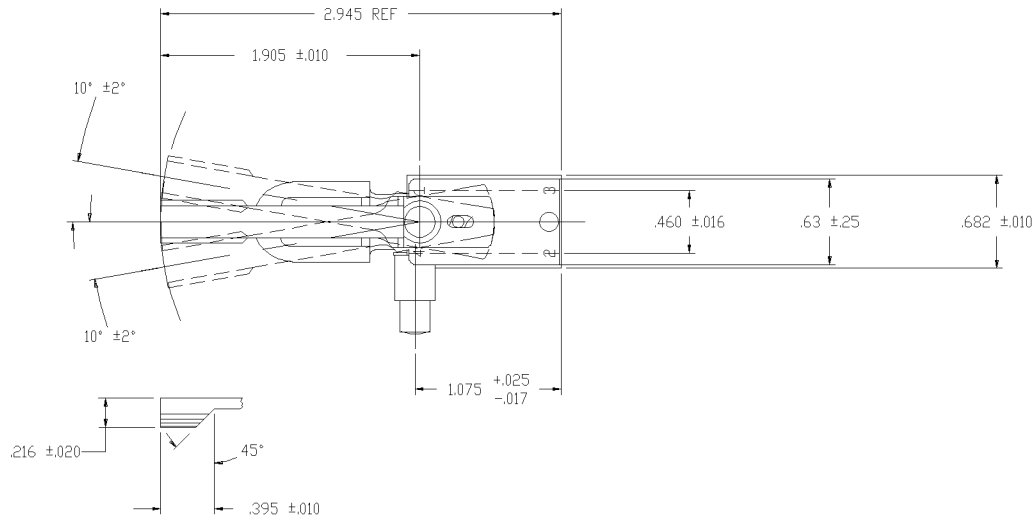
TYCO NO. 1520265-7
 (ARAB NO. 8907K311)

90-15562

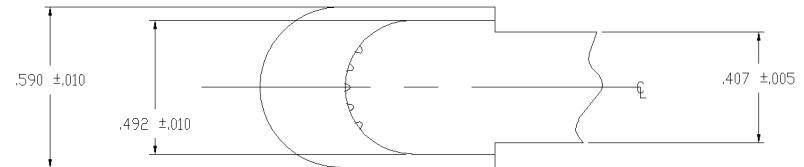
THIS DRAWING IS A CONTROLLED DOCUMENT.		DWN WESTEMEIER 06JUN90	tyco Electronics	Tyco Electronics Corporation	
DIMENSIONS: INCHES		CHK E. WESOLEK 07JUN90		Arab, AL 35016	
TOLERANCES UNLESS OTHERWISE SPECIFIED:		APVD F. WESOLEK 07JUN90	NAME		
0 PLC ±		PRODUCT SPEC	UTILITY TRIGGER TOOL HANDLE SWITCH WITH REVERSING		
1 PLC ±		APPLICATION SPEC	12A 125 VAC / 6A 250 VAC		
2 PLC ±		WEIGHT	SIZE	CAGE CODE	DRAWING NO
3 PLC ±		MATERIAL	A2	00779	1520265
4 PLC ±		FINISH	CUSTOMER DRAWING		RESTRICTED TO
ANGLES ±		SCALE	1:1		SHEET 5 OF 10
REV		REV		REV	

THIS DRAWING IS UNPUBLISHED.
 RELEASED FOR PUBLICATION
 BY TYCO ELECTRONICS CORPORATION. ALL RIGHTS RESERVED.

LOC	DIST	REVISIONS					
AD	00	#	LTR	DESCRIPTION	DATE	OWN	APVD
		-		SEE SHEET 1	-	-	-



1. LEAD STRIP LENGTH FOR REVERSING SWITCH TO BE .250 +.032 -.016.
2. 3 RECESSES IN BASE WILL ACCEPT MAX DIMENSION OF .120 DIA. (OVER INSULATION).



DETAIL A

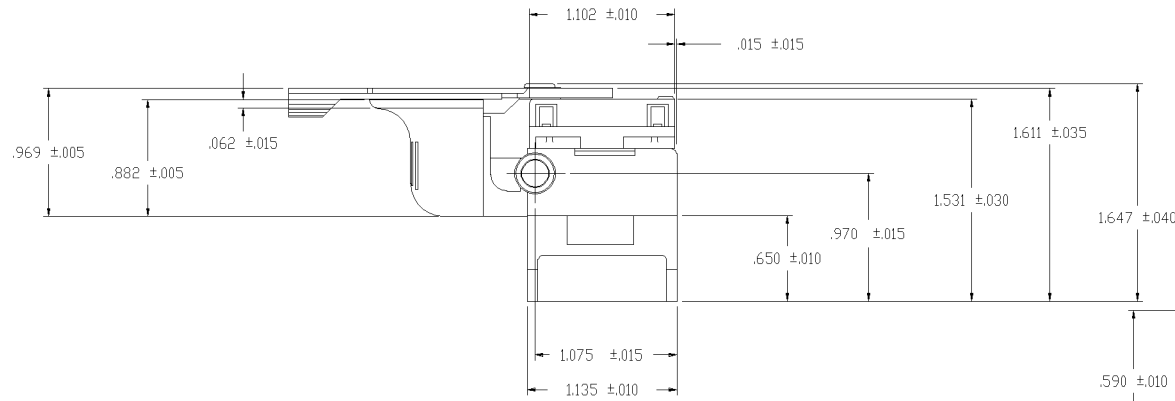
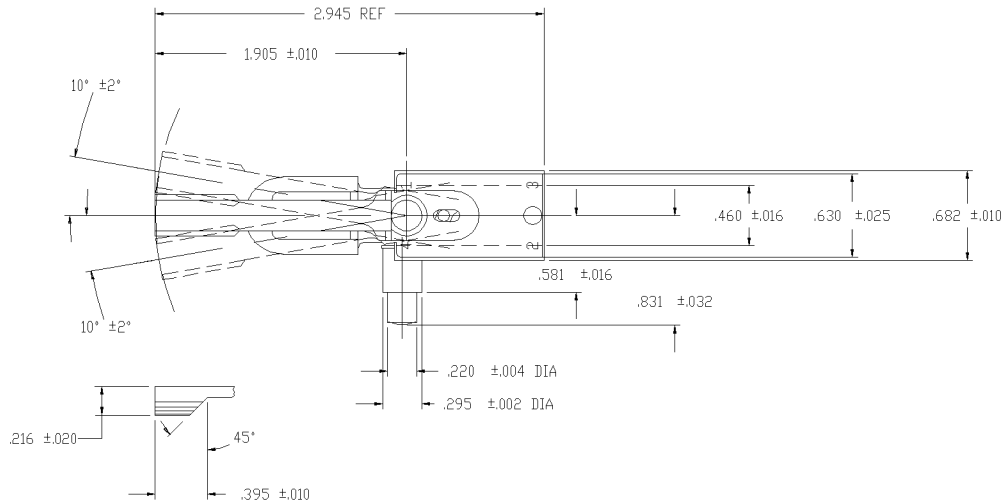
TYCO NO. 1520265-8
 (ARAB NO. 8907K350)

91-602

THIS DRAWING IS A CONTROLLED DOCUMENT.		DWN W. HANSON	200CT95	tyco Electronics	Tyco Electronics Corporation	
		CHK W. Leonard	300CT95		Arab, AL 35016	
DIMENSIONS: INCHES		TOLERANCES UNLESS OTHERWISE SPECIFIED:		APVD M.R. DUMMER	NAME	
0 PLC ± -		1 PLC ± -		PRODUCT SPEC		UTILITY TRIGGER TOOL HANDLE SWITCH
1 PLC ± -		2 PLC ± -		APPLICATION SPEC		WITH REVERSING
2 PLC ± -		3 PLC ± -		SIZE		12A 125 VAC / 6A 250 VAC
3 PLC ± -		4 PLC ± -		CAGE CODE		DRAWING NO
ANGLES ± -		FINISH		WEIGHT		RESTRICTED TO
MATERIAL		CUSTOMER DRAWING		A2 00779		1520265
		SCALE		SHEET		REV
		1:1		6 OF 10		C

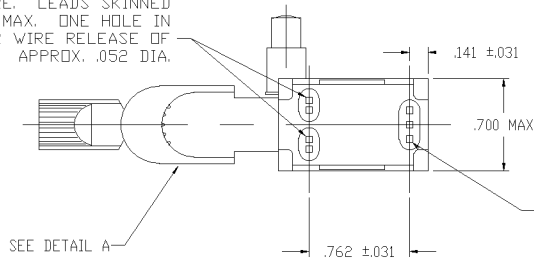
THIS DRAWING IS UNPUBLISHED. RELEASED FOR PUBLICATION
 COPYRIGHT BY TYCO ELECTRONICS CORPORATION. ALL RIGHTS RESERVED.

LOC	DIST	REVISIONS			
P	LTR	DESCRIPTION	DATE	OWN	APVD
AD	00	SEE SHEET 1	-	-	-

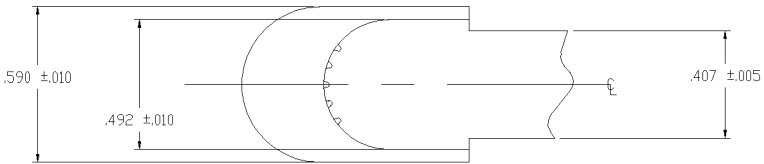


1. LEAD STRIP LENGTH FOR REVERSING SWITCH TO BE .250 +.032 -.016.
2. 3 RECESSES IN BASE WILL ACCEPT MAX DIMENSION OF .120 DIA. (OVER INSULATION).

2 HOLES FOR #16 OR #18 STRANDED TIN DIPPED WIRE. LEADS SKINNED .250 MIN TO .312 MAX. ONE HOLE IN EACH RECESS FOR WIRE RELEASE OF APPROX. .052 DIA.



2 OUTER HOLES FOR #16 OR #18 STRANDED, TIN DIPPED WIRE. LEADS TO BE SKINNED .250 MIN TO .375 MAX. CENTER HOLE IS FOR WIRE RELEASE OF APPROX. .052 DIA.



DETAIL A

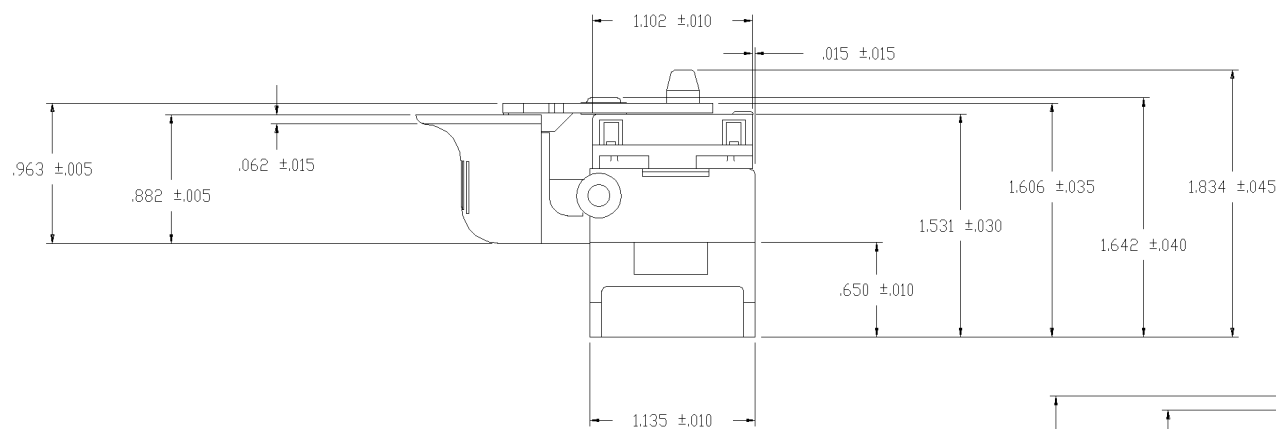
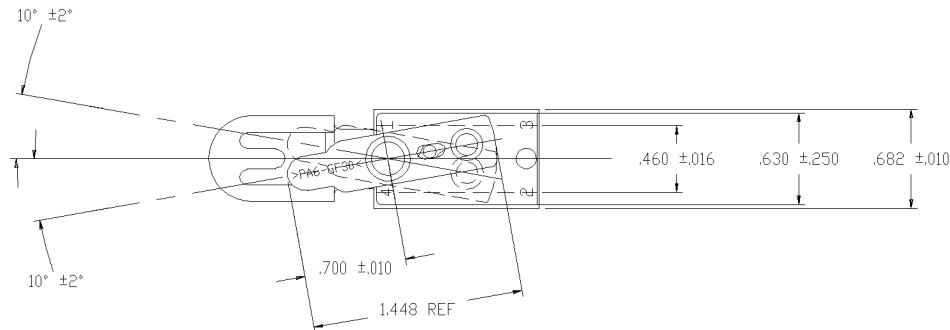
TYCO NO. 1520265-1
(ARAB NO. 8332K6)

91-652

THIS DRAWING IS A CONTROLLED DOCUMENT.		DWN W. HANSON 07MAR86	tyco Electronics		Tyco Electronics Corporation Arab, AL 35016
DIMENSIONS: INCHES		CHK T. CHRISTENSEN 07MAR86	NAME UTILITY TRIGGER TOOL HANDLE SWITCH WITH REVERSING		
TOLERANCES UNLESS OTHERWISE SPECIFIED: 0 PLC ± - 1 PLC ± - 2 PLC ± - 3 PLC ± - 4 PLC ± - ANGLES ± -		APVD M.R. DUMMER 07MAR86	PRODUCT SPEC 12A 125 VAC / 6A 250 VAC / 14A 12 VDC		
MATERIAL		APPLICATION SPEC	SIZE A2	CAGE CODE 00779	DRAWING NO C-1520265
FINISH		WEIGHT	RESTRICTED TO		SCALE 1:1
		CUSTOMER DRAWING		SHEET 7	OF 10
				REV C	

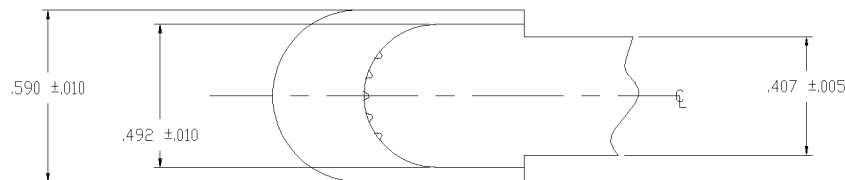
THIS DRAWING IS UNPUBLISHED. RELEASED FOR PUBLICATION
 © COPYRIGHT BY TYCO ELECTRONICS CORPORATION. ALL RIGHTS RESERVED.

LOC	DIST	REVISIONS					
AD	00	F	LTR	DESCRIPTION	DATE	OWN	APVD
		-		SEE SHEET 1			

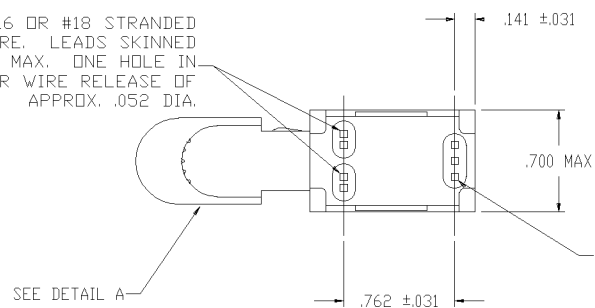


1. LEAD STRIP LENGTH FOR REVERSING SWITCH TO BE .250 +.032 -.016.
2. 3 RECESSES IN BASE WILL ACCEPT MAX DIMENSION OF .120 DIA. (OVER INSULATION).

2 HOLES FOR #16 OR #18 STRANDED TIN DIPPED WIRE. LEADS SKINNED .250 MIN TO .312 MAX. ONE HOLE IN EACH RECESS FOR WIRE RELEASE OF APPROX. .052 DIA.



DETAIL A



2 OUTER HOLES FOR #16 OR #18 STRANDED, TIN DIPPED WIRE. LEADS TO BE SKINNED .250 MIN TO .375 MAX. CENTER HOLE IS FOR WIRE RELEASE OF APPROX. .052 DIA.

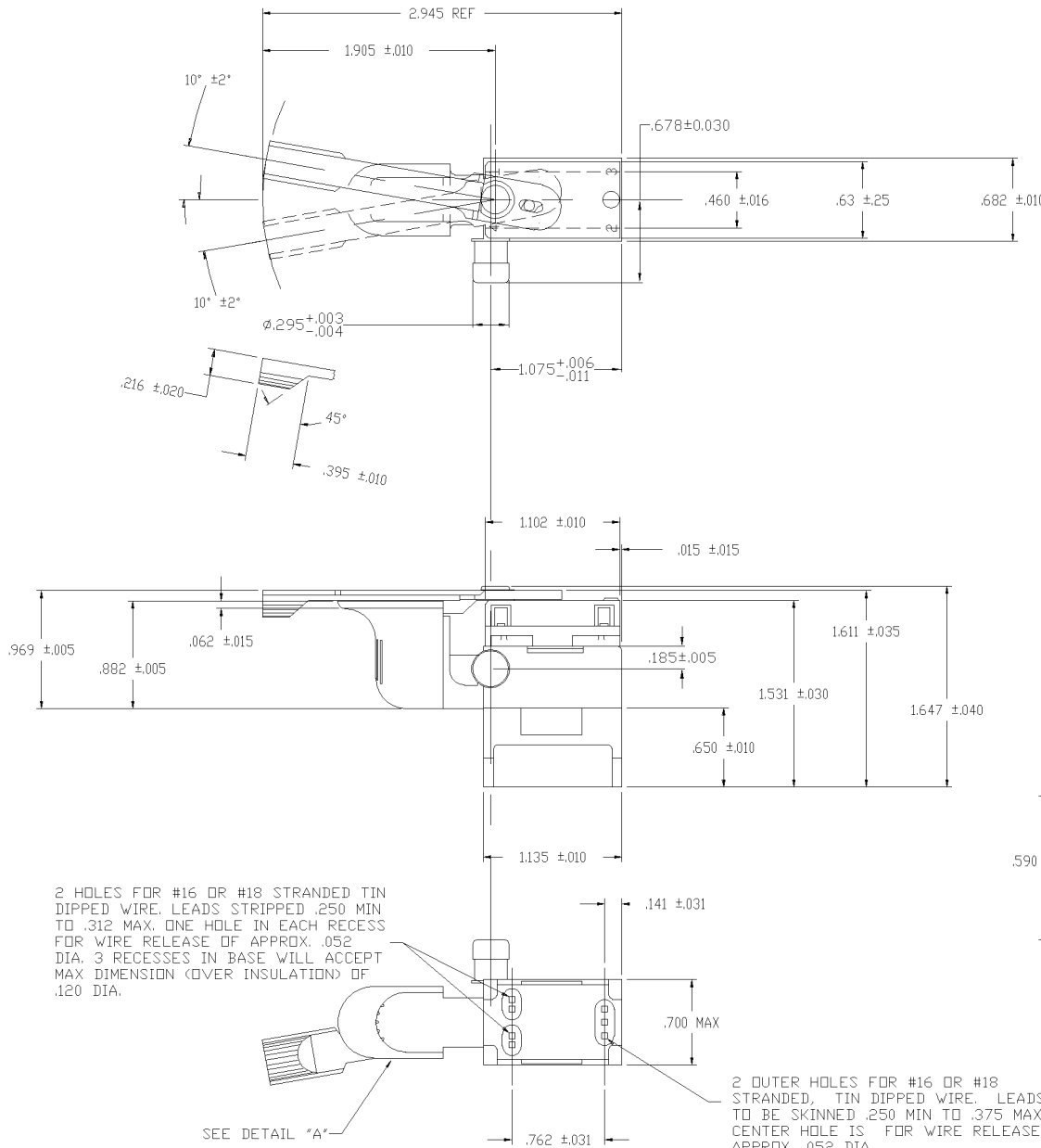
TYCO NO. 1-1520265-5
(ARAB NO. 8907K56)

91-759

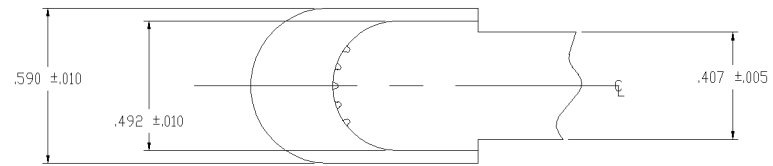
THIS DRAWING IS A CONTROLLED DOCUMENT.		DWN T. CHRISTENSEN 28OCT96 CHK W. HANSON 31OCT96 APVD M.R. DUMMER 05NOV96	tyco Electronics Tyco Electronics Corporation Arab, AL 35016
DIMENSIONS: INCHES 0 PLC ± - 1 PLC ± - 2 PLC ± - 3 PLC ± - 4 PLC ± - ANGLES ± - FINISH -	TOLERANCES UNLESS OTHERWISE SPECIFIED: 0 PLC ± - 1 PLC ± - 2 PLC ± - 3 PLC ± - 4 PLC ± - ANGLES ± - FINISH -	NAME M.R. DUMMER PRODUCT SPEC APPLICATION SPEC WEIGHT -	UTILITY TRIGGER TOOL HANDLE SWITCH WITH REVERSING (SPECIAL REVERSING LEVER) 14A 12 VDC SIZE CAGE CODE DRAWING NO RESTRICTED TO A2 00779 C-1520265 -
MATERIAL -		CUSTOMER DRAWING	SCALE 1:1 SHEET 8 OF 10 REV C

THIS DRAWING IS UNPUBLISHED. RELEASED FOR PUBLICATION
 © COPYRIGHT BY TYCO ELECTRONICS CORPORATION. ALL RIGHTS RESERVED.

LOC	DIST	REVISIONS			
P	LTR	DESCRIPTION	DATE	OWN	APVD
AD	00	C	SEE SHEET 1	-	-



1. LEAD STRIP LENGTH FOR REVERSING SWITCH TO BE .250 +.032 -.016.



DETAIL A

2 HOLES FOR #16 OR #18 STRANDED TIN DIPPED WIRE. LEADS STRIPPED .250 MIN TO .312 MAX. ONE HOLE IN EACH RECESS FOR WIRE RELEASE OF APPROX. .052 DIA. 3 RECESSES IN BASE WILL ACCEPT MAX DIMENSION (OVER INSULATION) OF .120 DIA.

2 OUTER HOLES FOR #16 OR #18 STRANDED, TIN DIPPED WIRE. LEADS TO BE SKINNED .250 MIN TO .375 MAX. CENTER HOLE IS FOR WIRE RELEASE OF APPROX. .052 DIA.

SEE DETAIL "A"

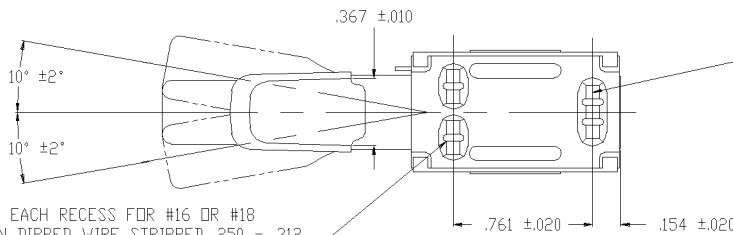
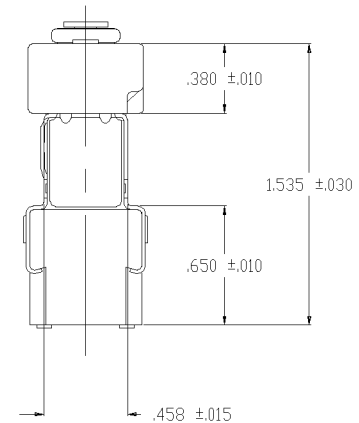
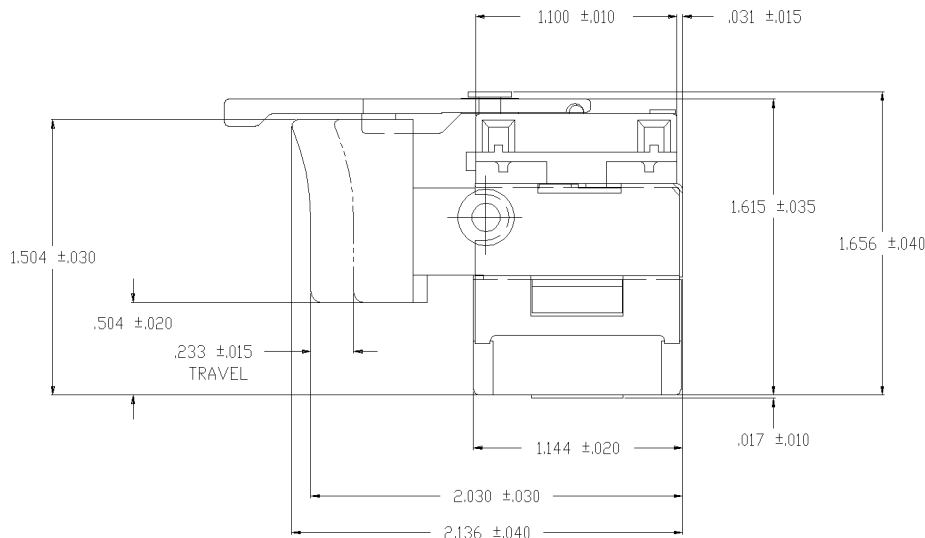
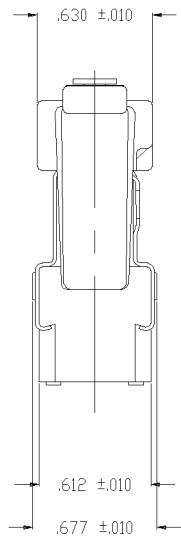
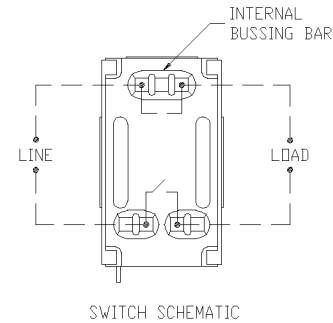
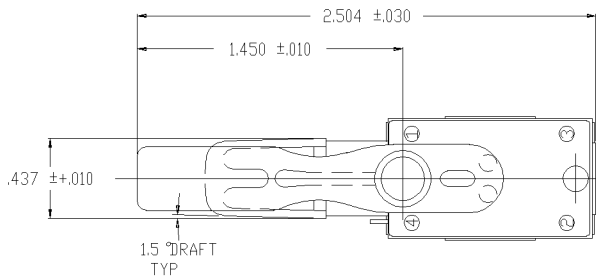
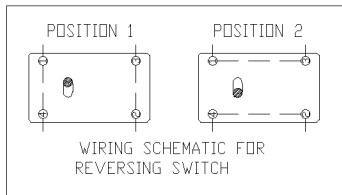
TYCO NO. 1-1520265-0
 (ARAB NO. 8907K411)

91-16243

THIS DRAWING IS A CONTROLLED DOCUMENT.		DWN W. Leonard 25FEB00 CHK T. CHRISTENSEN 25FEB00 APVD M. WARDRUP 25FEB00	tyco Electronics Tyco Electronics Corporation Arab, AL 35016
DIMENSIONS: INCHES 	TOLERANCES UNLESS OTHERWISE SPECIFIED: 0 PLC ± - 1 PLC ± - 2 PLC ± - 3 PLC ± - 4 PLC ± - ANGLES ± - FINISH -	NAME UTILITY TRIGGER TOOL HANDLE SWITCH WITH REVERSING & DUMMY LOCK PIN 12A 125 VAC / 6A 250 VAC APPLICATION SPEC - WEIGHT - CUSTOMER DRAWING	SIZE A2 CAGE CODE 00779 DRAWING NO 1520265 RESTRICTED TO - SCALE 1:1 SHEET 9 OF 10 REV C

THIS DRAWING IS UNPUBLISHED. RELEASED FOR PUBLICATION
 BY TYCO ELECTRONICS CORPORATION. ALL RIGHTS RESERVED.

LOC	DIST	REVISIONS			
F	LTR	DESCRIPTION	DATE	OWN	APVD
AD	00	C	SEE SHEET 1	-	-



TWO OUTER HOLES FOR #16 OR #18 STRANDED TIN DIPPED WIRE STRIPPED .250 - .375. CENTER HOLE FOR .052 DIA. WIRE RELEASE.

ONE HOLE IN EACH RECESS FOR #16 OR #18 STRANDED TIN DIPPED WIRE STRIPPED .250 - .312. ONE HOLE IN EACH RECESS FOR .052 DIA. WIRE RELEASE.

1. LEAD STRIP LENGTH FOR REVERSING SWITCH TO BE .250 +.032 -.016.
2. 3 RECESSES IN BASE WILL ACCEPT MAX DIMENSION OF .120 DIA. (OVER INSULATION).

91-475

TYCO NO. 1-1520265-1
(ARAB NO. 8907K417)

THIS DRAWING IS A CONTROLLED DOCUMENT.		OWN W. HANSON	29APR84	tyco Electronics	Tyco Electronics Corporation Arab, AL 35016	
DIMENSIONS: INCHES		CHK W. Leonard	03MAY94		NAME	UTILITY TRIGGER TOOL HANDLE SWITCH WITH REVERSING 12A 125 VAC / 6A 250 VAC
TOLERANCES UNLESS OTHERWISE SPECIFIED:		APVD F. WESOLEK	03MAY94	PRODUCT SPEC	SIZE	CAGE CODE
0 PLC ± -	1 PLC ± -	APPLICATION SPEC	-	-	DRAWING NO	RESTRICTED TO
2 PLC ± -	3 PLC ± -	MATERIAL	-	WEIGHT	A2 00779	C=1520265
4 PLC ± -	ANGLES ± -	FINISH	-	CUSTOMER DRAWING	SCALE	1:1
SHEET		10 OF 10		REV		B