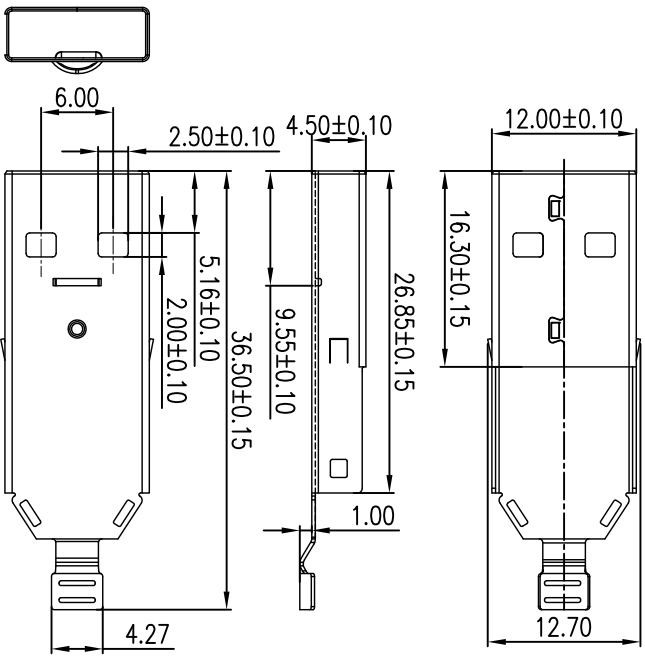


- NOTE:
 1. MATERIAL:
 1.1 INSULATOR: PBT+30%GF UL 94V-0
 1.2 CONTACT: 4pin BRASS(T=0.20mm)
 5pin BRASS(T=0.25mm)
 1.3 SHELL: SPCC(T=0.30mm)
 2. ELECTRICAL CHARACTERISTICS:
 2.1 CONTACT RESISTANCE: 30mΩ Max
 2.2 CONTACT CURRENT RATING: 1.5A
 2.3 DIELECTRIC WITHSTANDING VOLTAGE: 500 V R.M.S.
 2.4 INSULATION RESISTANCE: 100 MEGOHMS Min
 2.5 OPERATING TEMPERATURE: -40°C ~ 85°C
 3. MECHANICAL CHARACTERISTICS:
 3.1 MATING FORCE: 35 N Max
 3.2 UNMATED FORCE: 10 N Min INITIAL; 8 N Min AFTER TEST
 3.3 DURABILITY: 5,000 CYCLES
 4. PLATING
 4.1 TERMINAL CONTACT: GOLD PLATING ALL OVER 50U" MIN NICKEL AND 80U" MIN Matte Tin ALL OVER 50U" MIN NICKEL IN SOLDER AREA
 4.2 SHELL: 50U" MIN. NICKEL ALL OVER



2014/06/06	Jody	Structural changes	A1
2012/03/06	XIE	NEW DWG	A0
DATE	DR. BY	ECN. NO.	DESCRIPTION
			MARK
			VER.
-TOLERANCES- UNLESS OTHERWISE SPECIFIED			
X.X	±0.25	X.X'	±3.00"
X.XX	±0.20	X.XX'	±1.00"
X.XXX	±0.15	X.XXX'	±0.500"
TITLE: USB 3.0 9P A/M ASSEMBLY 15U" Blue		PRODUCT NO: 1003-023-01300	
DATE	SCALE	UNIT	TYPE
2012/04/06	1:1	mm	Z
			PAGE
			1/1

Cnc Tech, LLC