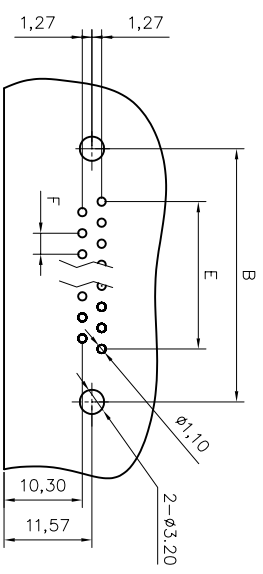
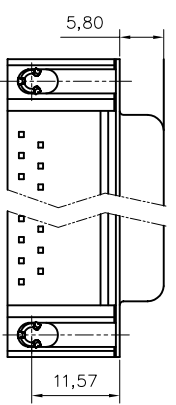
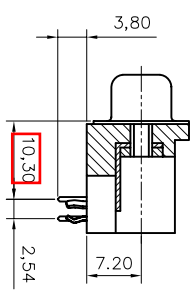
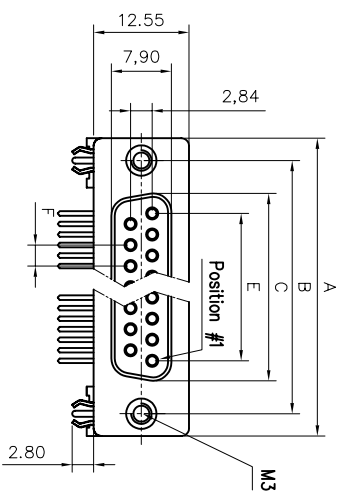


This document is the property of Amphenol Corporation and is delivered on a non-exclusive basis. It is loaned to the customer for their use only. It is not to be reproduced, stored in a retrieval system, or transmitted in any form or by any means, electronic, mechanical, photocopying, recording, or by any information storage and retrieval system, without the prior consent, in writing, of Amphenol Corporation. If you have any questions, please contact your local Amphenol sales office or Amphenol Corporation. Amphenol Corporation is not responsible for any damage to the product or to the customer's equipment caused by the use of this document. Amphenol Corporation is not responsible for any damage to the product or to the customer's equipment caused by the use of this document.



RECOMMENDED P.C.B. LAYOUT
(TOLERANCE +/-0.03)

Customer drawing



Nb of contacts	Dimensions					
	A	B	C	E	F	
9	30.89	24.99	16.33	10.96	2.74	
15	39.10	33.32	24.66	19.18	2.74	
25	53.09	47.04	38.38	33.24	2.77	
37	69.40	63.50	54.84	49.86	2.77	

REVISONS		DATE	APPROVED
1	SWM EGN	03/10/08	

D-SUB TECHNICAL DATA

SHELL : Steel 2.5um(100u") min. tin over 1.25um(50u") min. nickel
BODY : Glass filled thermoplastic.
 Flame retardant to UL94 V-0 Color Black

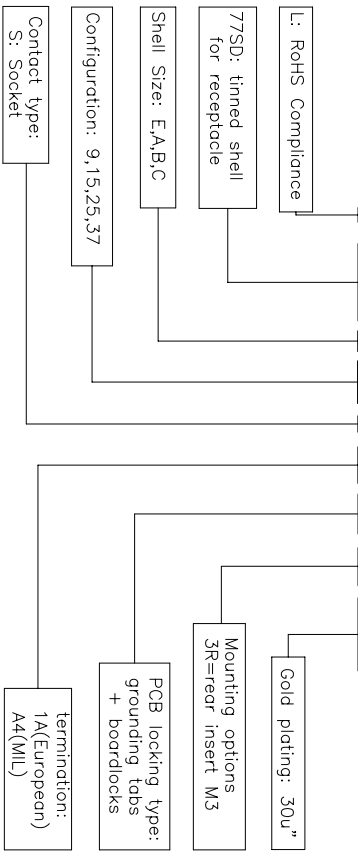
CONTACTS : Copper alloy
 0.76um(30u") min. gold
 over 1.25um(50u") min nickel in mating area,
 2.54um(100u") min tin over 1.25um(50u") min nickel on termination area

REAR INSERT : Brass,100u" min. tin over 50u" min. nickel
BOARDLOCK : Brass,100u" min. tin over 50u" min. nickel
ELECTRICAL : Voltage rating: 250 V RMS at 50 Hz
 Current rating: 5A per contact
 Withstanding Voltage >1000 V RMS at 50 Hz for one minute
 Insulation resistance >5000 M Ohms
 Contact resistance 20 mOhms max.

CLIMATIC : Temperature range -55 °C up to 125°C
MARKING : Amphenol---(Series No.)
 Manufacturing date
 Commercial reference

PRODUCT CODE

L 77SD X XX S 1A CH 3R C309



UNLESS OTHERWISE SPECIFIED		APPROVAL		DATE	
TOLERANCES	AS SHOWN	DRAWN	Checked	09/10/08	09/10/08
ANGLES	2°	FOR MATERIALS AND FINISHES	REMOVE SHARP EDGES	DRAWING FILE :	
REMOVE SHARP EDGES	ANGLE OF PROJECTION				
DIMENSIONS	MM	SIZE	DRAWING NO.	D-SUB contacts , SD series	
SCALE	NONE	REV.	1		
SHEET			1 OF 1		

Amphenol®