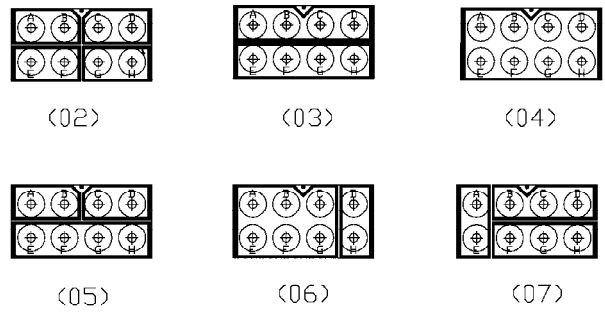
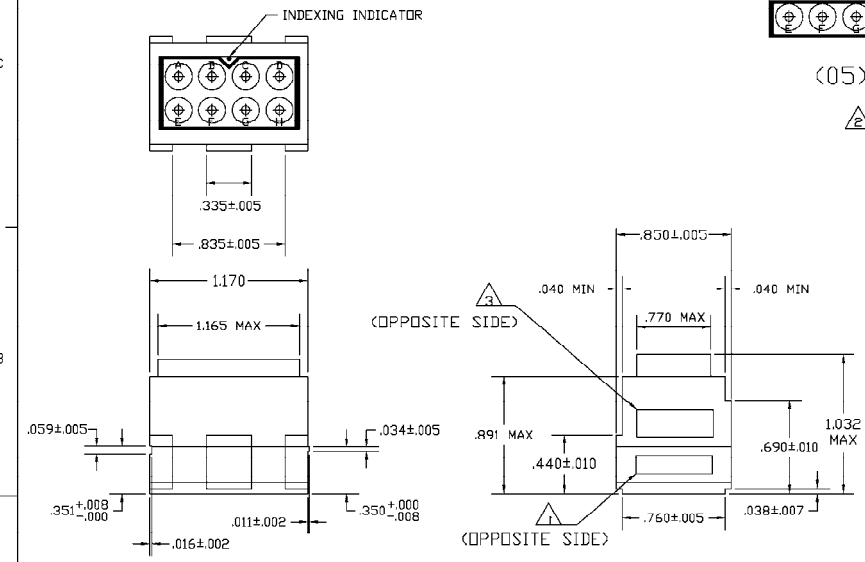


| DESCRIPTION     | MATERIAL  | FINISH                        |
|-----------------|---|-------------------------------|
| MODULE ASSEMBLY | EPOXY   | COLOR: BLACK                  |
| GROMMET         | FLUOROSILICONE RUBBER<br>70/30 BLEND                                      | COLOR: BLUE                   |
| CONTACT SOCKET  | BERYLLIUM COPPER<br>PER QQ-C-533  | GOLD PLATE<br>PER MIL-G-45204 |
| RETAINING CLIP  | BERYLLIUM COPPER<br>PER QQ-C-533<br>OR<br>STAINLESS STEEL<br>PER QQ-S-766 | NONE                          |
| CONTACTS        | COPPER ALLOY<br>PER MIL-C-39029/1<br>F.E.P.                               | GOLD PLATE<br>PER MIL-G-45204 |
| SEALING PLUGS   | PER MIL-P-19468   | COLOR: YELLOW                 |

| LOC | DIST | REV | DATE                 | BY   | APP'D |
|-----|------|-----|----------------------|------|-------|
| DF  | A0   | B   | REV PER 0600-5652-96 | 2-98 | TT DM |



BUSSING ARRANGEMENTS



- 1 MARK MODULE ASSEMBLY WITH 'AMP', AMP PART NO. AND DATE CODE .060 MINIMUM HIGH CHARACTERS PER 115-10002-2.
- 2 BUSSING ARRANGEMENT OUTLINE DENOTES INTERNAL ARRANGEMENT OF CONTACT SOCKETS.
- 3 MARK MODULE WITH APPROPRIATE CUSTOMER/MILITARY AT APPROXIMATE AREA SHOWN .060 MINIMUM HIGH CHARACTERS PER 115-10002-2.

|                           |   |   |   |   |   |   |            |
|---------------------------|---|---|---|---|---|---|------------|
| 538154-37                 |   |   | X |   | X | X | 1-592616-9 |
| 538154-42                 |   |   |   | X | X | X | 1-592616-8 |
| 538154-41                 |   | X |   |   | X | X | 1-592616-7 |
| 538154-40                 | X | X |   |   | X | X | 1-592616-6 |
| 538154-39                 |   |   |   |   | X | X | 1-592616-5 |
| 538154-38                 |   |   | X |   | X | X | 1-592616-4 |
| SUPSD BY -1 M81714/4-DB1  |   |   |   | X | X | X | 1-592616-3 |
| SUPSD BY -12 M81714/4-DB1 | X |   |   |   | X | X | 1-592616-2 |
| SUPSD BY -10 M81714/4-DB2 |   | X |   |   | X | X | 1-592616-1 |
| SUPSD BY -8 M81714/4-DB2  |   |   | X |   | X | X | 592616-9   |
| SUPSD BY -6 M81714/4-DB1  |   |   | X |   | X | X | 592616-8   |
| SUPSD BY -4 M81714/4-DB1  |   |   |   | X | X | X | 592616-7   |
|                           |   |   |   | X | X | X | 592616-6   |
|                           |   |   |   | X | X | X | 592616-5   |
|                           |   |   |   | X | X | X | 592616-4   |
|                           |   |   |   | X | X | X | 592616-3   |
|                           |   |   |   | X | X | X | 592616-2   |
|                           |   |   |   | X | X | X | 592616-1   |

| MARKING      | BUSSING ARRANGEMENTS | SEALING PLUG QTY 2 | CONTACTS QTY 11 | PART NO. |
|--------------|----------------------|--------------------|-----------------|----------|
| 070605040302 |                      |                    |                 |          |

THIS DRAWING IS A CONTROLLED DOCUMENT

AMP Incorporated  
Harplands, PA 17105-3698A

MODULE BLOCK ASSEMBLY  
SIZE 12, TJ

DATE: 07/79  
SCALE: 2:1  
SHEET: 1 of 1  
REV: B