

NOTES:

- ① DATE CODE
 - *** WORKING DAY
 - *** WORKING MONTH
 - *** WORKING YEAR
- ② INSULATOR OVERHANGS ALL EXTERNAL EDGES.
- 3. 6-32 UNC MIN. 2MM THREAD DEPTH
- 4. PART IS COMPLIANT TO RoHS DIRECTIVE 2002/95/EC AND ELV 2000/53/EC.
- ⑤ SCREWS ARE PACKAGED INTO PLASTIC BAG AND SHIPPED WITH BACKPLATE.

SEE DETAIL 2

PARTS LIST			
ITEM NO	QTY	DESCRIPTION	MATERIAL
	1	TOP ASSY W/SCREWS(47596-***33 OR 47596-***38)	
①	1	115X BACK PLATE ASSY (47596-***23)	BACK PLATE(STEEL WITH NICKEL PLATING) INSULATOR(POLYCARBONATE FILM)
②	1	SHOULDER SCREW 6-32 (475976**1)	LOW CARBON STEEL WITH NICKEL PLATING
③	2	PANHEAD SCREW 6-32(475976**2)	LOW CARBON STEEL WITH NICKEL PLATING

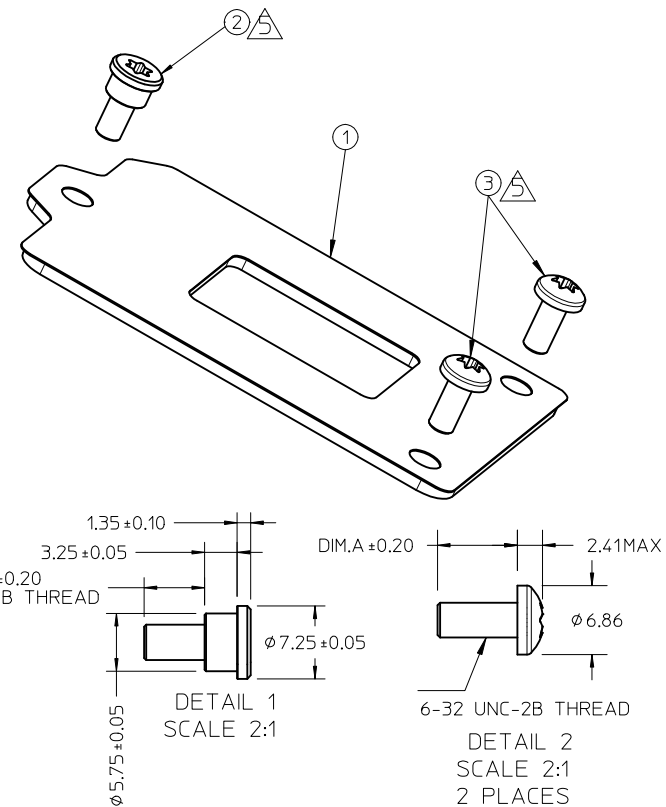
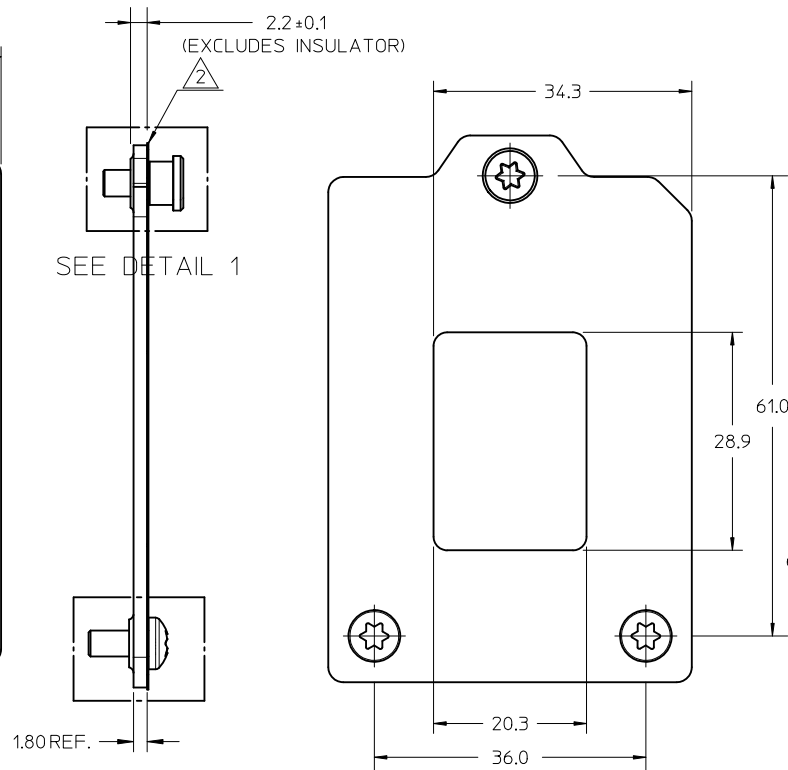
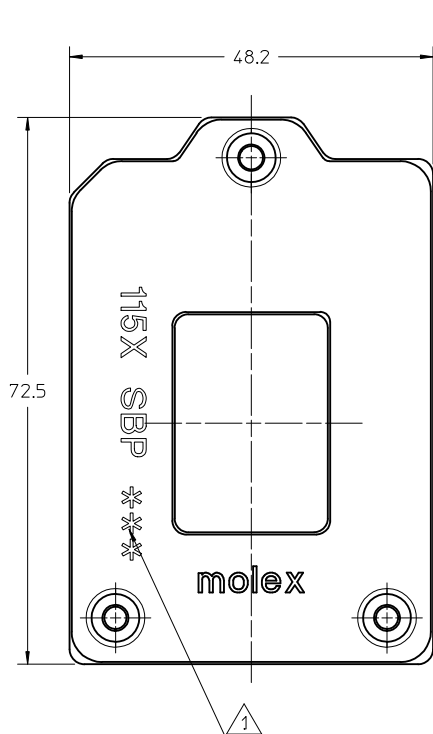
ENTER DESCRIPTION EC NO: SH2012-0146 DRWN:ZHANG11 2011/11/17 CHKD: APPR:AYIN 2011/12/30	QUALITY SYMBOLS	GENERAL TOLERANCES (UNLESS SPECIFIED)	DIMENSION STYLE	SCALE	DESIGN UNITS	THIRD ANGLE PROJECTION
	$F_A=0$	4 PLACES ± --- ± ---	MM ONLY	1.5:1	METRIC	
	$F_G=0$	3 PLACES ± --- ± ---	DRAWN BY DATE	TITLE	115X BACK PLATE ASSY WITH SCREWS FOR 1U SERVER	
	$F_P=0$	2 PLACES ± 0.13 ± ---	CHECKED BY DATE			
	1 PLACE ± 0.25 ± ---	APPROVED BY DATE				
		ANGULAR ± 1/2°	WFDENG 2010/07/09		MOLEX INCORPORATED	
			MATERIAL NO.	DOCUMENT NO.	SD-47596-108	
			SIZE A3		SHEET NO. 1 OF 1	

DRAFT WHERE APPLICABLE MUST REMAIN WITHIN DIMENSIONS

SEE TABLE

THIS DRAWING CONTAINS INFORMATION THAT IS PROPRIETARY TO MOLEX INCORPORATED AND SHOULD NOT BE USED WITHOUT WRITTEN PERMISSION

PART NO.	DESCRIPTION	PCB THICKNESS	DIM.A	DIM.B
47596-8838	WITH HALOGEN FREE	2.00(0.079")	5.6	4.22
47596-8833	WITH HALOGEN FREE	1.57(0.062")	5.17	3.8



NOTES:

- ① DATE CODE
 - *** WORKING DAY
 - *** WORKING MONTH
 - *** WORKING YEAR
- ② INSULATOR OVERHANGS ALL EXTERNAL EDGES.
- 3. 6-32 UNC MIN. 2MM THREAD DEPTH
- 4. PART IS COMPLIANT TO RoHS DIRECTIVE 2002/95/EC AND ELV 2000/53/EC.
- ⑤ SCREWS ARE PACKAGED INTO PLASTIC BAG AND SHIPPED WITH BACKPLATE.

SEE DETAIL 2

PARTS LIST			
ITEM NO	QTY	DESCRIPTION	MATERIAL
	1	TOP ASSY W/SCREWS(47596-***33 OR 47596-***38)	
①	1	115X BACK PLATE ASSY (47596-***23)	BACK PLATE(STEEL WITH NICKEL PLATING) INSULATOR(POLYCARBONATE FILM)
②	1	SHOULDER SCREW 6-32 (475976**1)	LOW CARBON STEEL WITH NICKEL PLATING
③	2	PANHEAD SCREW 6-32(475976**2)	LOW CARBON STEEL WITH NICKEL PLATING

ENTER DESCRIPTION	QUALITY SYMBOLS
EC NO: SH2012-0146	$F_{\Delta} = 0$
DRWN: ZHANG11	$F_{\square} = 0$
CHKD:	$F_{\circ} = 0$
APPR: AYIN	
2011/11/17	
2011/12/30	

GENERAL TOLERANCES (UNLESS SPECIFIED)	DIMENSION STYLE	SCALE	DESIGN UNITS
	MM ONLY	1.5:1	METRIC
	mm INCH		THIRD ANGLE PROJECTION
4 PLACES ± --- ± ---	DRAWN BY	DATE	TITLE
3 PLACES ± --- ± ---	CHECKED BY	DATE	
2 PLACES ± 0.13 ± ---	APPROVED BY	DATE	
1 PLACE ± 0.25 ± ---	WFDENG	2010/07/09	
ANGULAR ± 1/2°	MATERIAL NO.		
	SEE TABLE		
DRAFT WHERE APPLICABLE MUST REMAIN WITHIN DIMENSIONS	SIZE		
	A3		

115X BACK PLATE ASSY WITH SCREWS FOR 1U SERVER	
MOLEX INCORPORATED	
DOCUMENT NO.	SHEET NO.
SD-47596-108	1 OF 1
THIS DRAWING CONTAINS INFORMATION THAT IS PROPRIETARY TO MOLEX INCORPORATED AND SHOULD NOT BE USED WITHOUT WRITTEN PERMISSION	

47596-8838	WITH HALOGEN FREE	2.00(0.079")	5.6	4.22
47596-8833	WITH HALOGEN FREE	1.57(0.062")	5.17	3.8
PART NO.	DESCRIPTION	PCB THICKNESS	DIM.A	DIM.B