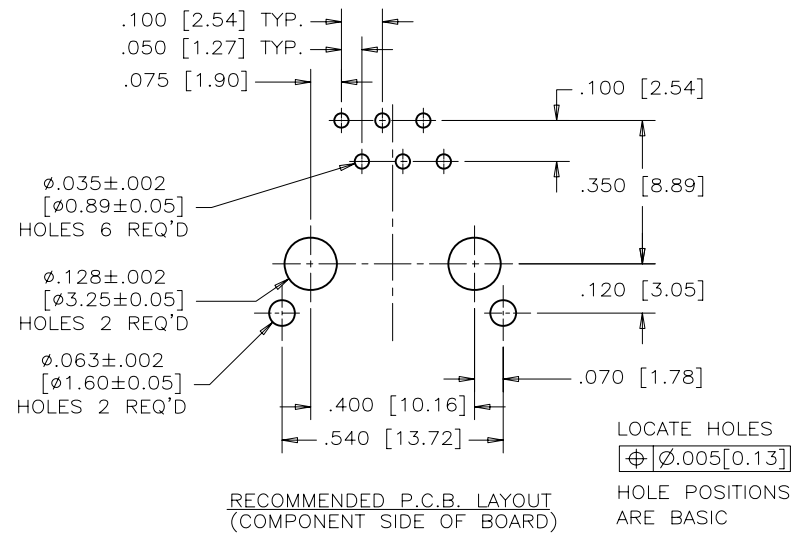
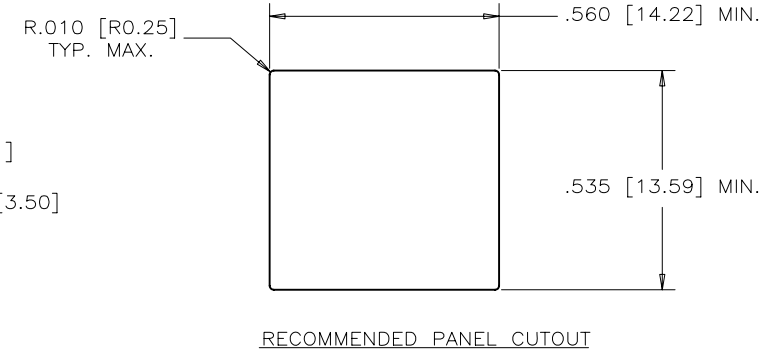
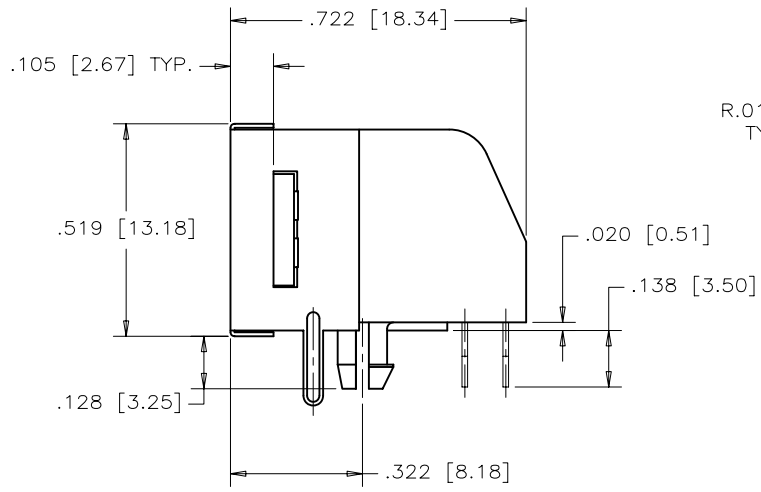
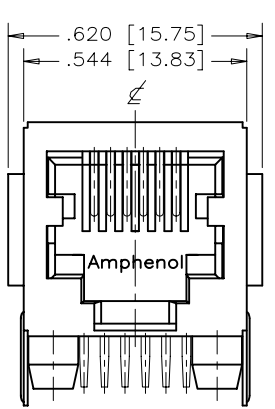


REVISIONS				
SYM	ZONE	ECN, ERN NO.	DATE	APPRD.
A		PROPOSAL	FEB 27/08	L.CHAN



**MATERIALS:**  
 PLASTIC HOUSING: ENGINEER THERMOPLASTIC  
 FLAMMABILITY RATING UL 94V-0  
 COLOR: BLACK

**CONTACTS:**  
 PHOSPHOR BRONZE  
 PLATING: REFER TO PART NUMBER FOR GOLD  
 THICKNESS ON MATING SURFACES.  
 50  $\mu$ " [1.27 MICRONS]  
 MIN. NICKEL UNDERPLATE  
 100  $\mu$ " [2.54 MICRONS]  
 MIN. MATTE TIN OR GOLD FLASH ON CONTACT TAILS.

**SHIELD:**  
 COPPER ALLOY  
 PLATING: NICKEL



AMPHENOL PART NUMBER: RJE03-166-2X20-H

- 1 = 06  $\mu$ " GOLD
- 2 = 15  $\mu$ " GOLD
- 3 = 30  $\mu$ " GOLD
- 4 = 50  $\mu$ " GOLD

THIS DOCUMENT CONTAINS PROPRIETARY INFORMATION AND SUCH INFORMATION MAY NOT BE DISCLOSED TO OTHERS FOR ANY PURPOSE OR USED FOR MANUFACTURING PURPOSES WITHOUT WRITTEN PERMISSION FROM AMPHENOL CANADA CORP.

DRAWN	J.OUYANG	DATE	FEB 27/08	Amphenol Canada Corp.	
DESIGNED					
CHECKED	MT.CHAN	DATE	FEB 27/08	TITLE MODULAR JACK, PARTIAL SHIELD	
I. E. APPRD.				6 POSITIONS, 6 CONTACTS	
Q. A. APPRD.				(WITH SIDE FLANGES) - RoHS COMPLIANT	
DWG. APPRD.				DWG	DRAWING NO.
ENG. REL. NO.					P-RJE03-166-2X20H
REF.				REV.	A
DIMENSIONS ARE IN		CODE ID. NO.	03554	SCALE	
INCHES [mm]				WT.	
				SURF.	
				SHEET	1 OF 1