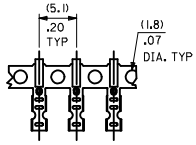
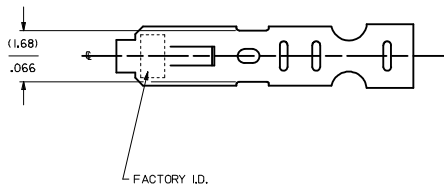
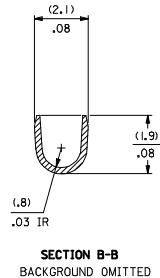
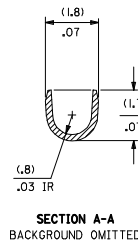
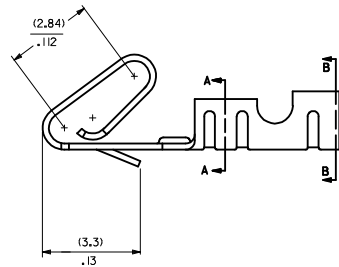
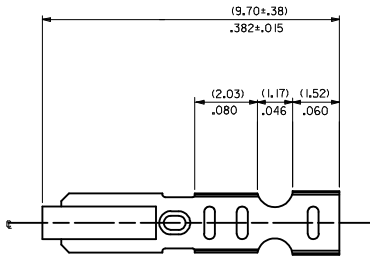
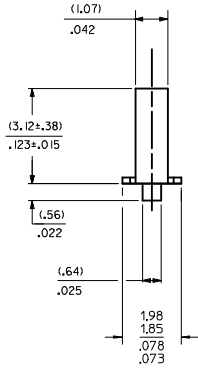
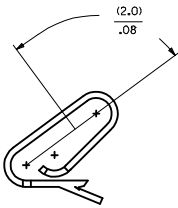


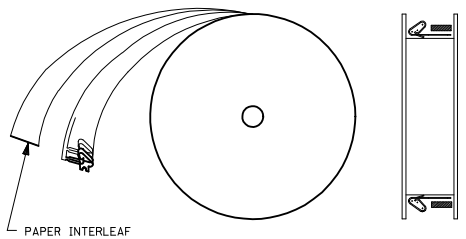
CARRIER VIEW



SELECT GOLD LOCATION



WINDING DETAIL A



NOTES:


- MATERIAL:
10.20/.008 THICK PHOS BRONZE
- FINISH:
222 - OVERALL MATTE TIN: (0.00254)/.000100 MIN. TIN OVER (0.00127)/.000050 MIN NICKEL
P909 - OVERALL HOT TIN DIP: (0.00254)/.000100 MIN.
231 - SELECT GOLD: (0.00127)/.000050 MIN.
SELECT MATTE TIN: (0.00254)/.000100 MIN.
OVERALL NICKEL UNDERPLATE: (0.00127)/.000050 MIN.
550 - SELECT GOLD: (0.00038)/.000015 MIN.
OVERALL GOLD FLASH: (0.00005)/.000002 MIN.
OVERALL NICKEL UNDERPLATE: (0.00076)/.000030 MIN.
555- SELECT GOLD (0.00038)/.000015 MIN.
OVERALL NICKEL UNDERPLATE: (0.00076)/.000030
558 - SELECT GOLD: (0.00076)/.000030 MIN.
OVERALL GOLD FLASH: (0.00005)/.000002 MIN.
OVERALL NICKEL UNDERPLATE: (0.00127)/.000050 MIN.
561- SELECT GOLD (0.00076)/.000030 MIN.
OVERALL NICKEL UNDERPLATE: (0.00127)/.000050
- PRODUCT SPEC: PS-10-07
- PACKAGING SPECIFICATION: LOOSE TERMINALS: PER PK-2759-001
CHAIN FORM TERMINALS: PER PK-6459-001
- CRIMP IS FOR 22-30 GA WIRE WITH (1.57)/.062 DIA INSULATION MAX.
- INSERTION FORCE OF TERMINAL INTO (2.54)/.100 CENTERLINE CONNECTOR IS 2.5 LBS. MAX
- TERMINAL RETENTION IN HOUSING IS 26.7N / 6LBS MIN. WHEN PULLED AT THE RATE OF (25.4MM)/ 1 INCH PER MINUTE.
- DIMENSIONS GIVEN ACROSS CENTERLINES ARE SYMMETRICAL ABOUT THOSE CENTERLINES WITHIN HALF THE TOTAL TOLERANCE.
- THIS PART CONFORMS TO CLASS B REQUIREMENTS OF COSMETIC SPECIFICATION PS-45499-002

6459-(****)*
FORM
L=LOOSE
A=CHAIN PER DETAIL A
PLATING
SEE NOTE 2

| | | | | | | | | |
|---|---|--|--|--|--|--|---|--|
| ADD PK-6459-001 EC NO: UCP2014-0151 DRAWN BY: DRWN:KIPPER 2013/07/18 CHKD:ANDERSON 2013/07/18 APPR:FSM TH 2013/07/24 REV DESCRIPTION | QUALITY SYMBOLS ▽=0 ▽=0 ▽=0 | | GENERAL TOLERANCES (UNLESS SPECIFIED) mm INCH 4 PLACES ±.--- ±.--- 3 PLACES ±.--- ±.010 2 PLACES ±0.25 ±.014 1 PLACE ±0.36 ±.--- 0 PLACE ±.--- ±.--- ANGULAR ±1/2° DRAFT WHERE APPLICABLE MUST REMAIN WITHIN DIMENSIONS | | DIMENSION STYLE MM/IN DRAWN BY DATE SAMIEC 01/21/92 CHECKED BY DATE PATEL 01/21/92 APPROVED BY DATE FSMITH 2012/03/20 | | SCALE DESIGN UNITS INCH INCH THIRD ANGLE PROJECTION | |
| | MATERIAL NO. SEE CHART DOCUMENT NO. SD-6459 | | | | TITLE KK (2.54)/.100 CRIMP TERMINAL, 22-30 GA WIRE SAME AS 2759 EXCEPT MATL molex | | SHEET NO. 1 OF 2 | |
| | THIS DRAWING CONTAINS INFORMATION THAT IS PROPRIETARY TO MOLEX INCORPORATED AND SHOULD NOT BE USED WITHOUT WRITTEN PERMISSION | | | | | | | |
| | SIZE D | | | | | | | |

6459-(***)*

| PART NO. | ENG. NO. |
|------------|--------------|
| 08-52-0101 | 6459-(P909) |
| 08-52-0123 | 6459-(P909)L |
| 08-65-0801 | 6459-(561) |
| | 6459-(561)L |
| 08-52-0118 | 6459-(222) |
| | 6459-(222)L |
| 08-65-0811 | 6459-(558) |
| 08-65-0812 | 6459-(558)L |
| 08-65-0815 | 6459-(555) |
| 08-65-0816 | 6459-(555)L |
| 08-65-0813 | 6459-(550) |
| 08-65-0814 | 6459-(550)L |
| 08-65-0817 | 6459-(231) |
| 08-65-0818 | 6459-(231)L |

| | | | | | | | | | | | | |
|---|--|--|---------------------------------------|-------------------|----------------------|---|------------------|--------------|------------------------|--|--|--|
| SEE SHEET 1 DEC NO: UCP2014-0151 DRAWN BY: CHYKOBANDERSON APPR: FSMITH | 2013/07/18 2013/07/18 2013/07/24 | QUALITY SYMBOLS ▽=0 ▽=0 ▽=0 | GENERAL TOLERANCES (UNLESS SPECIFIED) | | DIMENSION STYLE | | SCALE | DESIGN UNITS | THIRD ANGLE PROJECTION | | | |
| | | | | | MM/IN | | 1:1 | INCH | | | | |
| | | | | | mm INCH | | DRAWN BY DATE | | TITLE | | | |
| | | | | | 4 PLACES ±.001 ±.001 | | SAMI EC 01/21/92 | | KK (2.54)/.100 CRIMP | | | |
| | | 3 PLACES ±.005 ±.010 | | CHECKED BY DATE | | TERMINAL, 22-30 GA WIRE | | | | | | |
| | | 2 PLACES ±0.25 ±.014 | | PATEL 01/21/92 | | SAME AS 2759 EXCEPT MATL | | | | | | |
| | | 1 PLACE ±0.36 ±.001 | | APPROVED BY DATE | |  | | | | | | |
| | | 0 PLACE ±.001 ±.001 | | FSMITH 2012/03/20 | | | | | | | | |
| | | ANGULAR ±1/2° | | MATERIAL NO. | | DOCUMENT NO. | | SHEET NO. | | | | |
| | | DRAFT WHERE APPLICABLE MUST REMAIN WITHIN DIMENSIONS | | SEE CHART | | SD-6459 | | 2 OF 2 | | | | |
| | | | | SIZE D | | THIS DRAWING CONTAINS INFORMATION THAT IS PROPRIETARY TO MOLEX INCORPORATED AND SHOULD NOT BE USED WITHOUT WRITTEN PERMISSION | | | | | | |