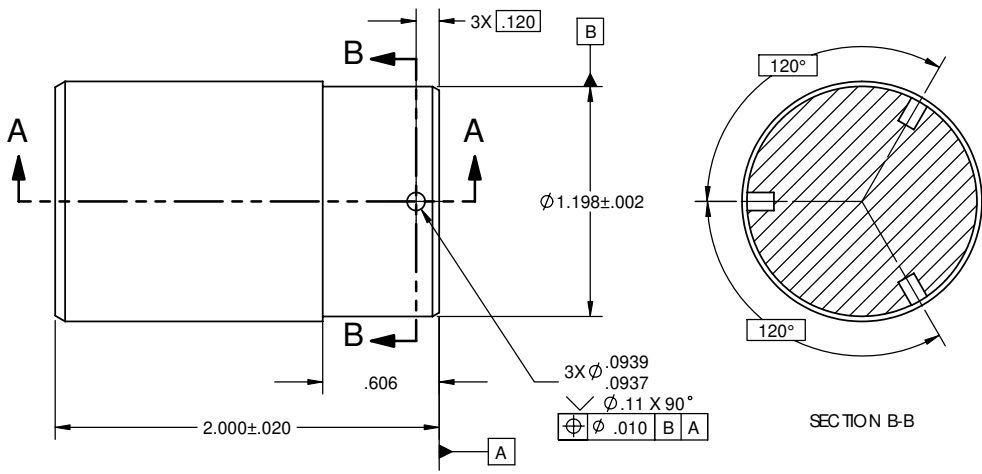
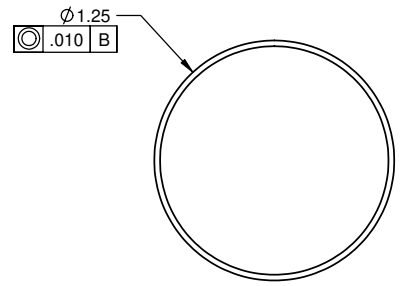
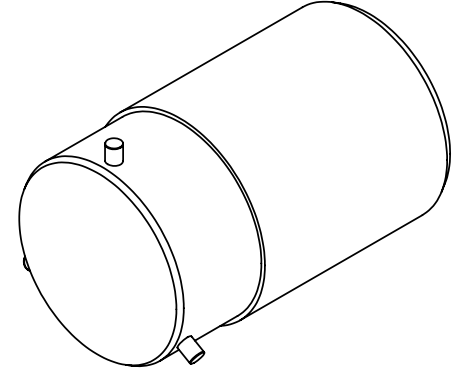
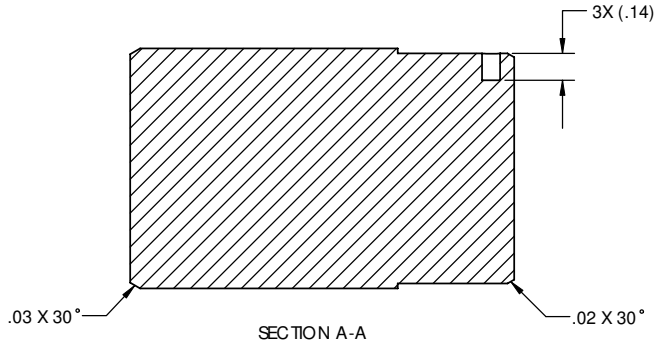
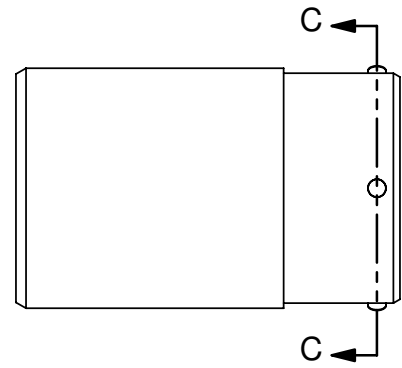


REVISIONS					
REV.	DESCRIPTION	ECO	DATE	DRWN	APPD
A	RELEASE TO PRODUCTION.	1418	11/30/09	SC	JAS



SECTION B-B



SECTION C-C

3X PRESS FIT DOWEL PINS
(SEE NOTE 3)

NOTES

1. MATERIAL: 6061 ALUMINUM.
2. FINISH: CLEAR ANODIZED.
3. AMERICAN NATIONAL STANDARD HARDENED GROUND MACHINE DOWEL PINS OR APPROVED EQUIVALENT. DOWEL PINS TO BE ZINC PLATED.
4. PART TO BE FREE OF BURRS, SHARP EDGES, AND FOREIGN MATERIAL.
5. UNLESS OTHERWISE SPECIFIED ALL FEATURES SHALL HAVE A PROFILE TOLERANCE OF .010 ALL OVER WITH RESPECT TO DATUMS A & B.
6. PART MUST BE ROHS COMPLIANT PER EUROPEAN UNION 2002/95/EC.
7. SEE CAD MODEL FOR ADDITIONAL DIMENSIONS.
8. FOR MACHINING INSTRUCTIONS ON CONVERTING BLANK TO FUNCTIONAL ADAPTER, REFERENCE DOCUMENT NUMBER 64MT-0535-13.

PROPRIETARY AND CONFIDENTIAL
THE INFORMATION CONTAINED IN THIS
DRAWING IS THE SOLE PROPERTY OF
OPTO TECHNOLOGY INC. ANY
REPRODUCTION IN PART OR AS A WHOLE
WITHOUT THE WRITTEN PERMISSION OF
OPTO TECHNOLOGY INC. IS
PROHIBITED.

UNLESS OTHERWISE SPECIFIED:		NAME	DATE	OPTO TECHNOLOGY INC. 160 E. Marquardt Drive, Wheeling IL 60090	
DIMENSIONS ARE IN INCHES	TOLERANCES	DRAWN	SC	04/06/09	TITLE: ADAPTOR, BLANK
ANGULAR ± 1 DEG	TWO PLACE DECIMAL ±.010	CHECKED	JAS	11/30/09	
THREE PLACE DECIMAL ±.005		ENG APPR	JAS	11/30/09	
MATERIAL	FINISH	COMMENTS		SCALE	DWG. NO.
ALUMINUM 6061	ANODIZED			2:1	64MT-0535
APPLICATION	DO NOT SCALE DRAWING			WEIGHT	REV
					A
				SCALE	SHEET 1 OF 1