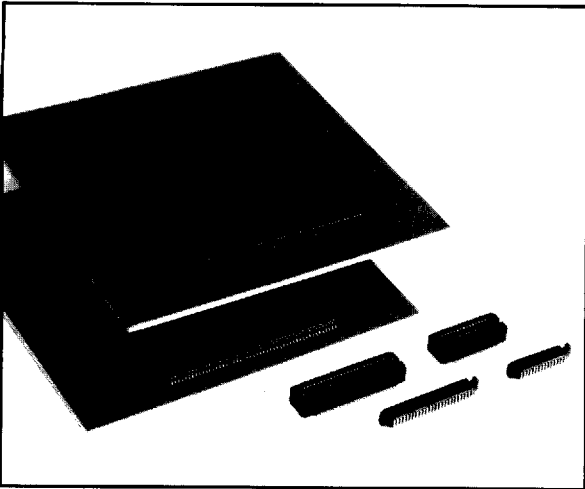


IL-312 SERIES CONNECTORS

0.5mm (.020") Contact Spacing, PCB-to-PCB SMT Connectors



These high density SMT connectors are designed for parallel PCB-to-PCB applications. They are ideal for use in VCRs, notebook PCs, cordless telephones, mobile phones, audio/visual and other telecommunications equipment where reduced size and weight are important.

FEATURES

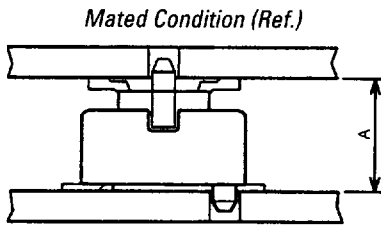
- SMT contacts
- 2.5mm (.098") to 3.5mm (.138") stacked height
- Surface area of both pin and socket connectors facilitates automatic mounting
- Contact terminal length permits image recognition
- Available on embossed tape for automatic mounting

GENERAL SPECIFICATIONS

Number of Contacts	20 to 80, 100
Contact Spacing	0.5mm (.020")
Current Rating	0.3 Amps
Dielectric Withstanding Voltage	500 VAC r.m.s. (for one minute)
Insulation Resistance	100 megohms min.
Contact Resistance	40 milliohms max.
Operating Temperature	-40°C to +85°C

MATERIALS AND FINISHES

Description	Materials/Finishes
Insulator	Heat-resistant plastic (Black)
Contact	Copper alloy/Gold plating: connecting area 0.1µm (.000004") min.



Stacking Height (A)

		Pin	
Socket	Connector height code	Blank (standard)	30
	Blank (standard)	2.5 (.098)	3.0 (.118)
	H05	3.0 (.118)	3.5 (.138)

ORDERING INFORMATION

IL-312 - ** * * VF ** - A1

Series _____

No. of Contacts _____
20, 30, 40, 50, 60, 70, 80, 100

Contact Type _____
P - Pin S - Socket

Polarization Boss _____
Blank - No Boss
B - Polarization Boss

Termination Style _____
VF - Straight

Connector Height Code _____
[Socket] Blank (Standard) - 2.15 (.085)
 H05 - 2.65 (.104)
[Pin] Blank (Standard) - 1.55 (.061)
 30 - 2.05 (.081)

Finish Code _____
A1 - Gold plating, 0.1µm (.000004") min.

Dimensions and specifications subject to change without notice.



Hong Kong
Tel: 852-2723-7782
Fax: 852-2723-9028

Japan
03-3780-2715
03-3780-2883

Singapore
65-748-1332
65-748-2920

Taiwan
02-555-9711
02-556-5424

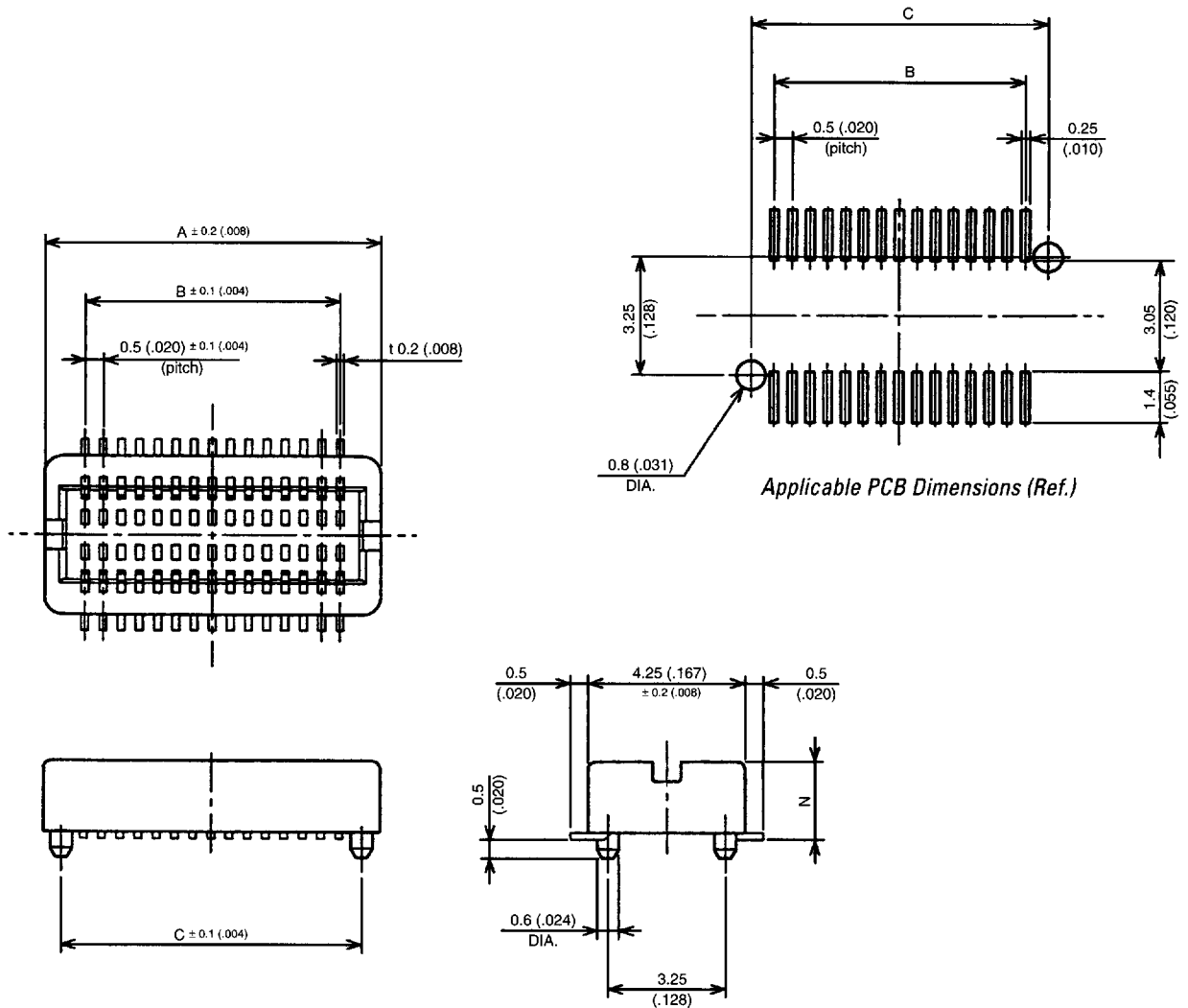
United Kingdom
1276-21717
1276-66165

United States
714-753-2600
714-753-2699

IL-312 SERIES CONNECTORS

0.5mm (.020") Contact Spacing, PCB-to-PCB SMT Connectors

SOCKET SIDE • STRAIGHT



No. of Contacts	Part Number		A	B	C
	Standard type Dimension N: 2.15 (.085)	H05 type Dimension N: 2.65 (.104)			
20	IL-312- 20S*-VF-A1	IL-312- 20S*-VFH05-A1	6.75 (.266)	4.5 (.177)	5.75 (.226)
30	IL-312- 30S*-VF-A1	IL-312- 30S*-VFH05-A1	9.25 (.364)	7 (.276)	8.25 (.325)
40	IL-312- 40S*-VF-A1	IL-312- 40S*-VFH05-A1	11.75 (.462)	9.5 (.374)	10.75 (.423)
50	IL-312- 50S*-VF-A1	IL-312- 50S*-VFH05-A1	14.25 (.561)	12 (.472)	13.25 (.522)
60	IL-312- 60S*-VF-A1	IL-312- 60S*-VFH05-A1	16.75 (.659)	14.5 (.571)	15.75 (.620)
70	IL-312- 70S*-VF-A1	IL-312- 70S*-VFH05-A1	19.25 (.758)	17 (.669)	18.25 (.718)
80	IL-312- 80S*-VF-A1	IL-312- 80S*-VFH05-A1	21.75 (.856)	19.5 (.768)	20.75 (.817)
100	IL-312-100S*-VF-A1	IL-312-100S*-VFH05-A1	26.75 (1.053)	24.5 (.964)	25.75 (1.014)

Note 1: * Add polarization boss code.

B - Polarization boss, Blank - No boss

Note 2: To order by reel of embossed tape, add -E3500 to end of Part Number.

Dimensions in mm (inches).

Hong Kong
Tel: 852-2723-7782
Fax: 852-2723-9028

Japan
03-3780-2715
03-3780-2883

Singapore
65-748-1332
65-748-2920

Taiwan
02-555-9711
02-556-5424

United Kingdom
1276-21717
1276-66165

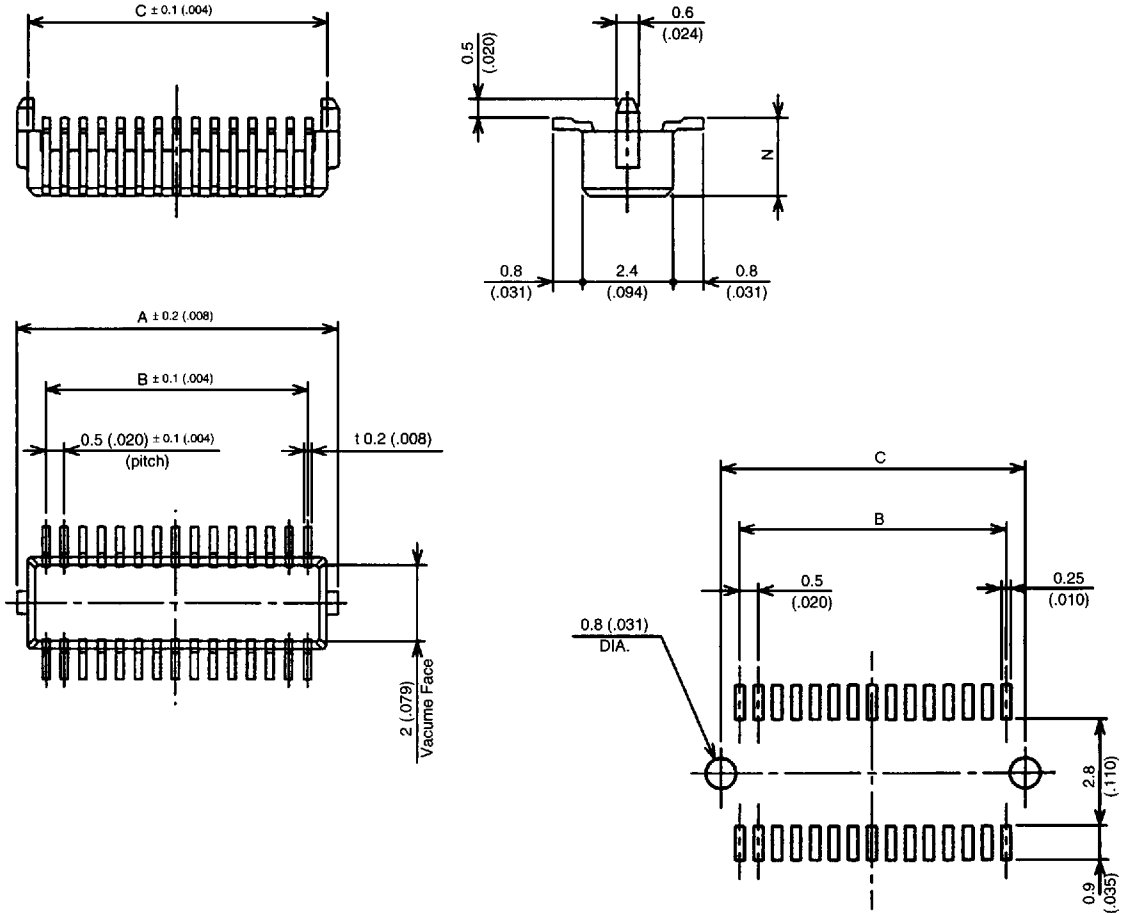
United States
714-753-2600
714-753-2699



IL-312 SERIES CONNECTORS

0.5mm (.020") Contact Spacing, PCB-to-PCB SMT Connectors

PIN SIDE • STRAIGHT



Applicable PCB Dimensions (Ref.)

No. of Contacts	Part Number		A	B	C
	Standard type Dimension N: 1.55 (.061)	30 type Dimension N: 2.05 (.081)			
20	IL-312- 20P*-VF-A1	IL-312- 20P*-VF30-A1	6.1 (.240)	4.5 (.177)	5.5 (.216)
30	IL-312- 30P*-VF-A1	IL-312- 30P*-VF30-A1	8.6 (.338)	7 (.276)	8 (.315)
40	IL-312- 40P*-VF-A1	IL-312- 40P*-VF30-A1	11.1 (.437)	9.5 (.374)	10.5 (.413)
50	IL-312- 50P*-VF-A1	IL-312- 50P*-VF30-A1	13.6 (.535)	12 (.472)	13 (.512)
60	IL-312- 60P*-VF-A1	IL-312- 60P*-VF30-A1	16.1 (.634)	14.5 (.571)	15.5 (.610)
70	IL-312- 70P*-VF-A1	IL-312- 70P*-VF30-A1	18.6 (.732)	17 (.669)	18 (.709)
80	IL-312- 80P*-VF-A1	IL-312- 80P*-VF30-A1	21.1 (.831)	19.5 (.768)	20.5 (.807)
100	IL-312-100P*-VF-A1	IL-312-100P*-VF30-A1	26.1 (1.028)	24.5 (.964)	25.5 (1.004)

Note 1: * Add polarization boss code.

B - Polarization boss, Blank - No boss

Note 2: To order by reel of embossed tape, add -E3500 to end of Part Number.

Dimensions in mm (inches).



Hong Kong
Tel: 852-2723-7782
Fax: 852-2723-9028

Japan
03-3780-2715
03-3780-2883

Singapore
65-748-1332
65-748-2920

Taiwan
02-555-9711
02-556-5424

United Kingdom
1276-21717
1276-66165

United States
714-753-2600
714-753-2699