

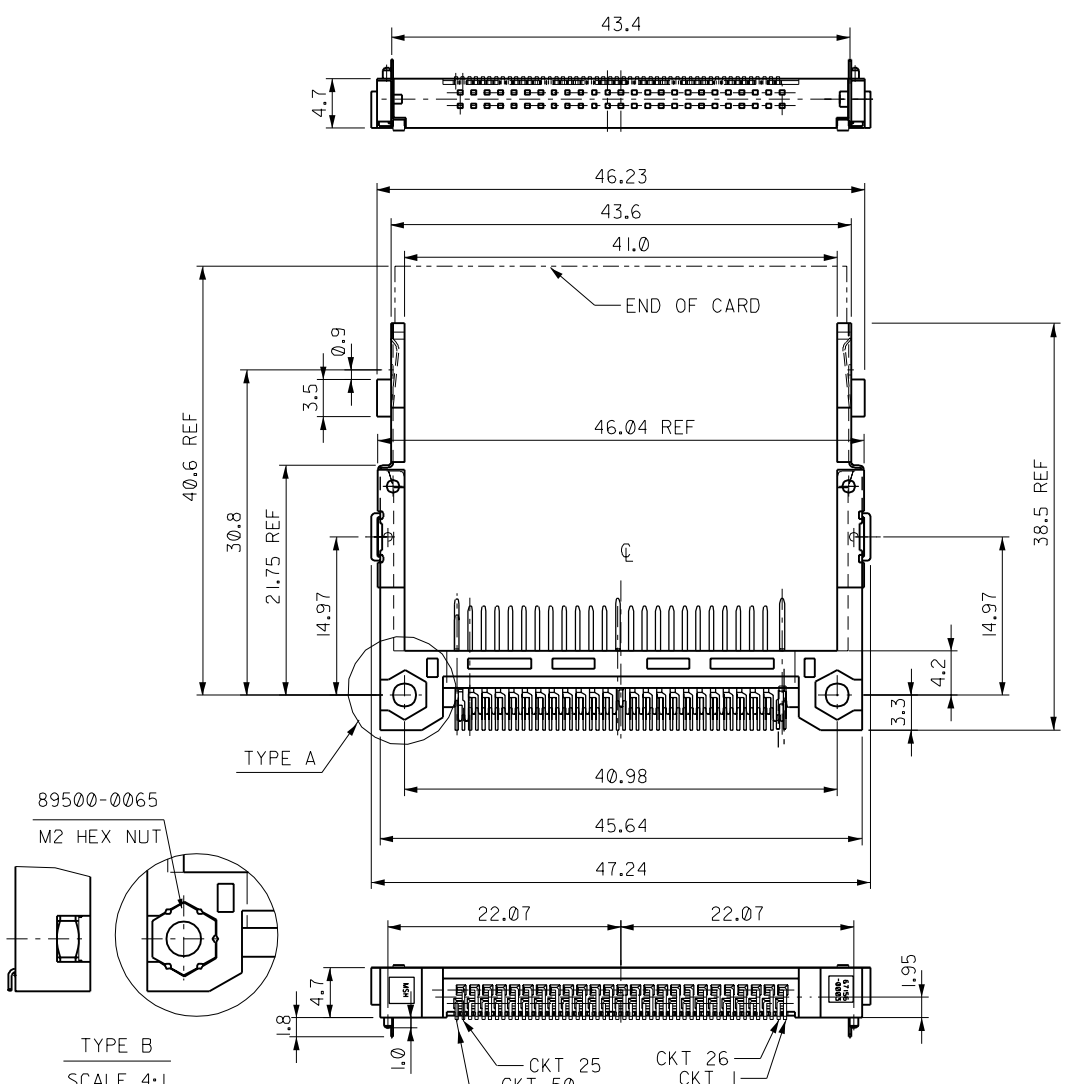
ENG. NO. SEE TABLE

EDP NO.

SIMILAR ITEM

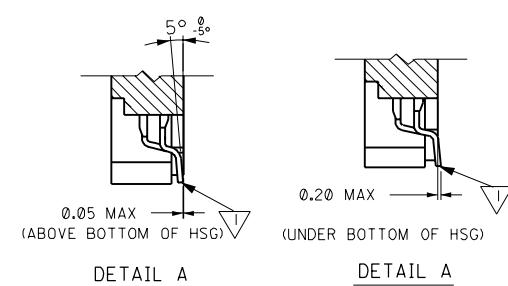
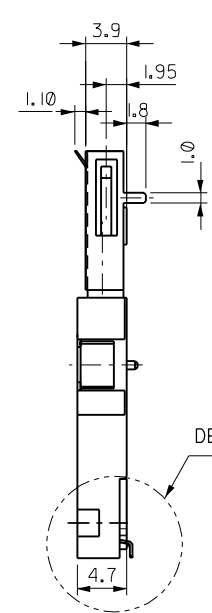
CADFILE NO.S6748703.S01

DO NOT SCALE DRAWING



NOTES:

▽ COPLANARITY OF ALL SOLDERING TAILS AND FITTING NAILS TO BE LESS THAN 0.15 mm.



| PART NO | DESCRIPTION | TYPE |
|------------|---|------|
| 67487-0001 | W/O SCREW NUT FALLING OFF PREVENTING STAKING | A |
| 67487-0002 | WITH SCREW NUT FALLING OFF PREVENTING STAKING | B |

| | |
|--------------------|-----|
| 2 | B |
| 1 | B |
| SHT | REV |
| REVISE ON CAD ONLY | |

| | | | | | | | | | | | | | | |
|--|---|----------------------------------|--|------|---|------|------------------------------------|--|---|-------------|-----------------------------|----|---------------------|-----|
| RTM EC NO.T2001-0183 DRWN: EMILY 01/06/12 CHK: MICHAEL LAI APPR: MICHAEL LAI | NEW RELEASE EC NO.T2001-0113 DRWN: EMILY 01/2/06 CHK: MEGA LIN APPR: MEGA LIN | DESCRIPTION MAJOR CRITICAL | QUALITY SYMBOLS | | GENERAL TOLERANCES: (UNLESS SPECIFIED) | | SCALE 2 : 1 | DESIGN UNITS <input checked="" type="checkbox"/> mm <input type="checkbox"/> INCH | THIRD ANGLE PROJECTION | DIMENSIONS: | | 2 | B | |
| | | | mm | INCH | mm | INCH | mm | INCH | | mm | INCH | mm | INCH | SHT |
| B | A | REV | DRAFT WHERE APPLICABLE MUST REMAIN WITHIN DIMENSIONS | | ANGULAR: ±2° | | DRAWN BY & DATE Tom Lu 00/09/06 | | TITLE: 50 CKT CF SMT HEADER ASS'Y (STANDARD TYPE) | | REVISE ON CAD ONLY | | | |
| | | | | | | | APPROVED BY & DATE | | MATERIAL NO. SEE TABLE | | DRAWING NO. SD-67487-003 | | SHEET NO. 1 OF 2 | |
| | | | | | | | CAD FILENAME S6748703.S01 | | MATERIAL NO. SEE TABLE | | DRAWING NO. SD-67487-003 | | SHEET NO. 1 OF 2 | |
| THIS DRAWING CONTAINS INFORMATION THAT IS PROPRIETARY TO MOLEX INCORPORATED AND SHOULD NOT BE USED WITHOUT WRITTEN PERMISSION. | | | | | | | | | | | | | A3 | |

DO NOT SCALE DRAWING

CADFILE NO. S6748703.S02

SIMILAR ITEM

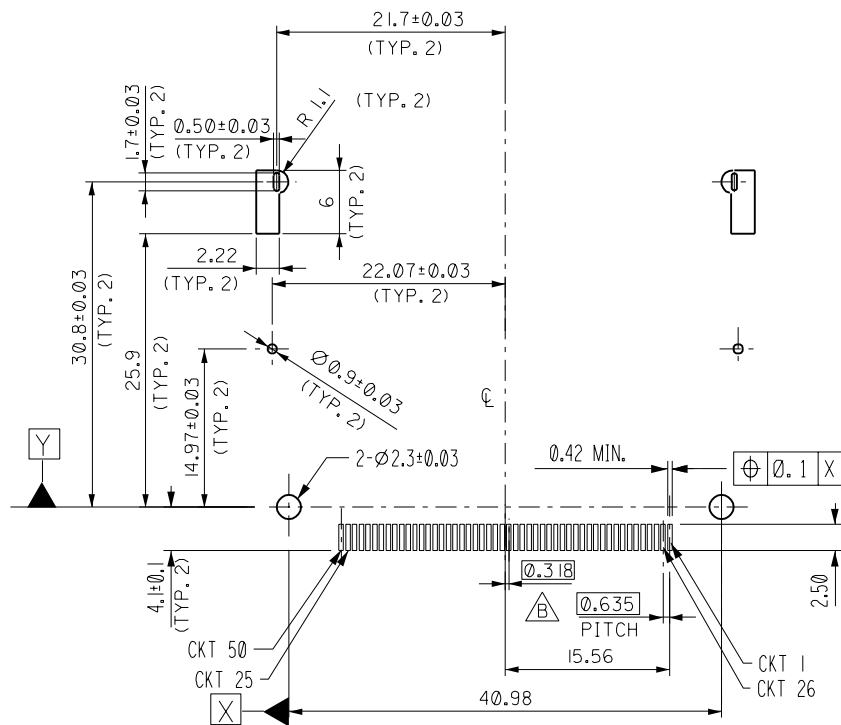
EDP NO.

ENG. NO SEE TABLE

NOTES:

1. MATERIAL : HOUSING: HIGH TEMP PLASTIC, UL94 V-0, COLOR: IVORY
 TERMINAL: COPPER ALLOY
 SHELL : COPPER ALLOY
2. PLATING: TERMINAL
 CONTACT AREA: GOLD FLASH (Au) OVER Pd-Ni
 SOLDERING TAIL: TIN-LEAD NICKEL OVERALL

METAL SHELL
 GROUDING : GOLD FLASH
 FITTING NAIL : GOLD FLASH
 BOARD LOCK : GOLD FLASH OVER NICKEL OVERALL
3. RECOMMENDED PCB THICKNESS: 1.20 mm.
4. THE COPLANARITY OF SOLDER TAILS SHOULD BE WITHIN 0.12 mm.
5. FOR PRODUCT SPECIFICATION: REFER TO PS-67487-004.
6. PACKAGE REF. TO PK-67487-001.



RECOMMENDED PCB LAYOUT

| | | | | | | | | | | | | | |
|--|---|----------------------------------|-----------------|-------|---|------|-----------------------------------|--|------------------------|--|--|---|----------------------|
| RTM EC NO. T2001-0183 DRW: EMILY 01/06/12 CHK: MICHAEL LAI APPR: MICHAEL LAI | NEW RELEASE EC NO. T2001-0113 DRW: EMILY 01/2/06 CHK: MEGA LIN APPR: MEGA LIN | DESCRIPTION MAJOR CRITICAL | QUALITY SYMBOLS | | GENERAL TOLERANCES: (UNLESS SPECIFIED) | | SCALE 2:1 | DESIGN UNITS <input checked="" type="checkbox"/> mm <input type="checkbox"/> INCH | THIRD ANGLE PROJECTION | DIMENSIONS: | | SHT | REV |
| | | | 4 PLACES ± . | ± . | mm | INCH | DRAWN BY & DATE EMILY 00/06/08 | TITLE: 50 CKT CF SMT HEADER ASS'Y (STANDARD TYPE) | | <input type="checkbox"/> mm <input type="checkbox"/> INCH | <input type="checkbox"/> mm <input type="checkbox"/> INCH | <input checked="" type="checkbox"/> mm ONLY | REVISION ON CAD ONLY |
| B | A | REV | 2 PLACES ±0.25 | ±.010 | ANGULAR: ±2° | | APPROVED BY & DATE | MATERIAL NO. SEE TABLE | | DRAWING NO. SD-67487-003 | | SHEET NO. 2 | |
| | | | 1 PLACE ±0.25 | ±.010 | DRAFT WHERE APPLICABLE MUST REMAIN WITHIN DIMENSIONS | | CAD FILENAME S6748703.S02 | | MOLEX INCORPORATED | | THIS DRAWING CONTAINS INFORMATION THAT IS PROPRIETARY TO MOLEX INCORPORATED AND SHOULD NOT BE USED WITHOUT WRITTEN PERMISSION. | | SIZE A3 |