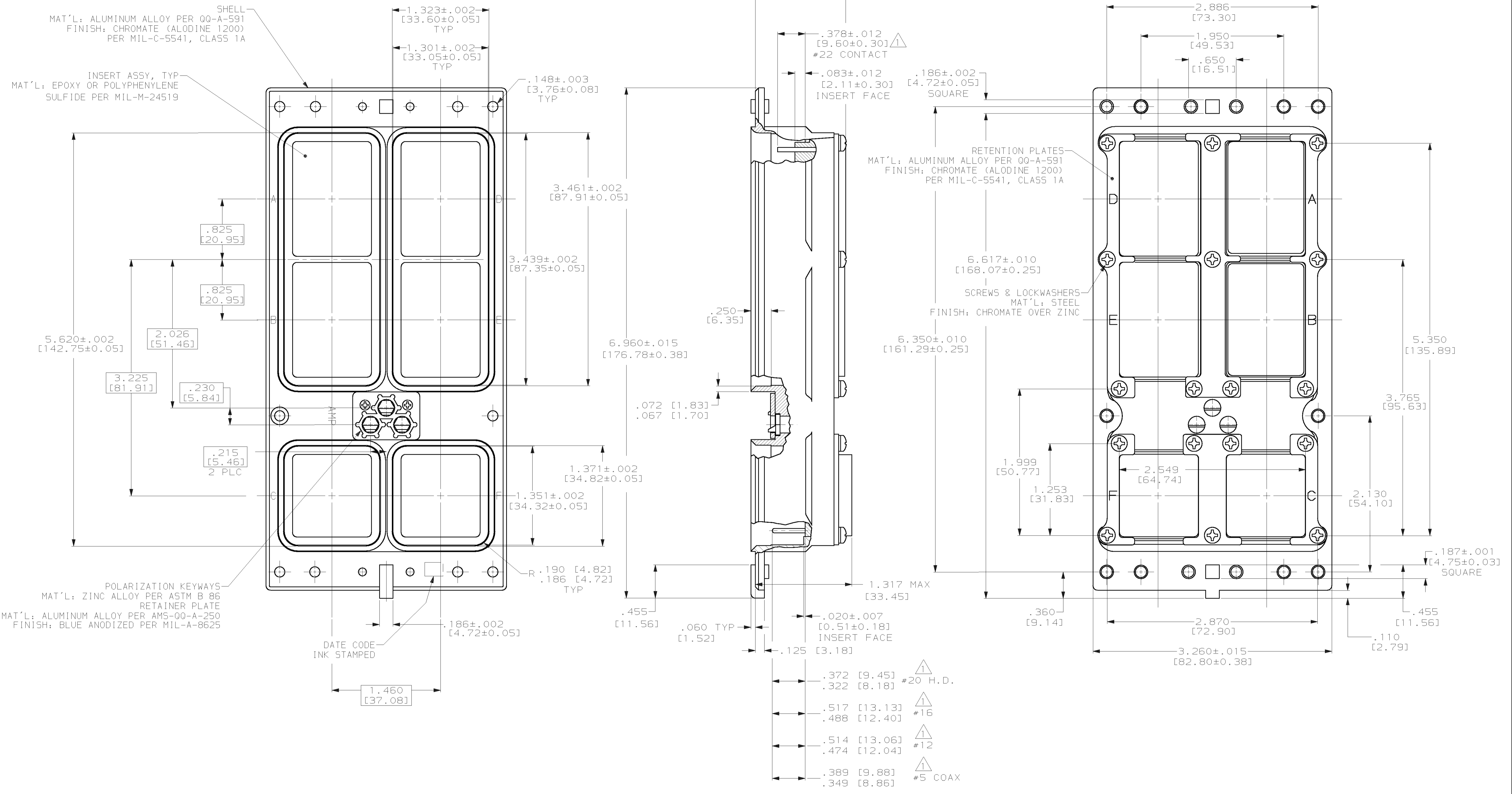


LOC	REV	DATE	APP'D
DF	A0		
H	REV PER	OG3D-0041-02	3-03 JMK SG



- CONTACTS ARE SHOWN IN POSITION FOR ILLUSTRATION ONLY. FOR SHIPMENT CONTACTS ARE INCLUDED IN A CONTAINER WITHIN THE CONNECTOR PACKAGE. COAX CONTACTS ARE NOT SUPPLIED AND MUST BE ORDERED SEPARATELY.
- ALL CONTACTS CAVITIES IN MODULES A,B,D & E ARE LOCATED WITHIN .006 [0.15] DIA TRUE POSITION. ALL CONTACT CAVITIES IN MODULE C & F ARE LOCATED WITHIN .020 [0.51] DIA TRUE POSITION.
- POLARIZING KEYS SHOWN IN POSITION 01 FOR ILLUSTRATION ONLY. CONNECTORS SHIPPED WITH KEYING PER ORDERING INSTRUCTIONS. CONTACT INSERTS AS SHOWN FOR ILLUSTRATION ONLY. SEE TABLE FOR DISRIPTIVE NUMBER.

NIC66J34A01AA0	208974-5
NIC66J31A00AA0	208974-4
NIC66J31A01AA1	208974-3
-	208974-2
NIC66J31A01AA0	208974-1
DESCRIPTIVE NUMBER	PART NUMBER

<small>THIS DRAWING IS A CONTROLLED DOCUMENT AND IS UNPUBLISHED. IT IS SUBJECT TO CHANGE AND THE CONTROLLING ENGINEERING ORGANIZATION SHALL BE CONTACTED FOR THE LATEST REVISION.</small>		C.C. THOMAS 11-27-95 R. GROSS 4-11-96 R. GROSS 4-11-96	AMP Incorporated Harrisburg, PA 17105-3608
DIMENSIONS: INCHES (mm)	TOLERANCES UNLESS OTHERWISE SPECIFIED: Ø PLC ±.005 Ø PLC ±.005 (0.13) ANGLE 40°±30'	APPLICATION SPEC HEIGHT	AMP CONNECTOR ASSY, SIZE 3 CLASS "B", RCPT, ARINC-600
MATERIAL SEE CALLOUTS	FINISH SEE CALLOUTS	SIZE A1	CAGE CODE 00779
CUSTOMER DRAWING		SCALE 1.5:1	SHEET 11