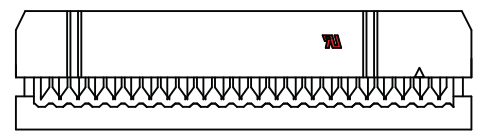
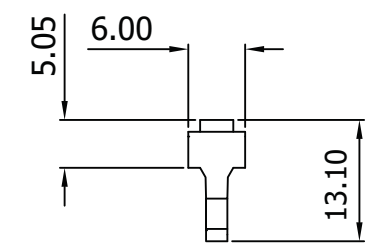
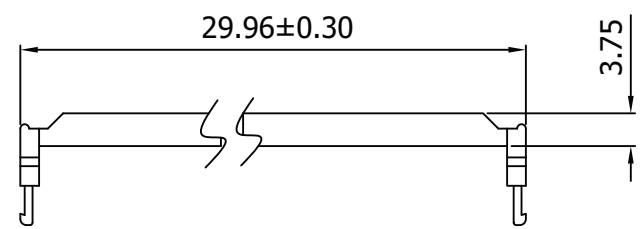
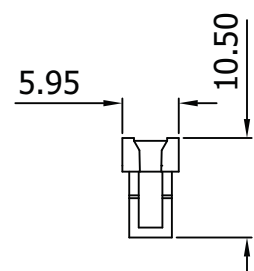
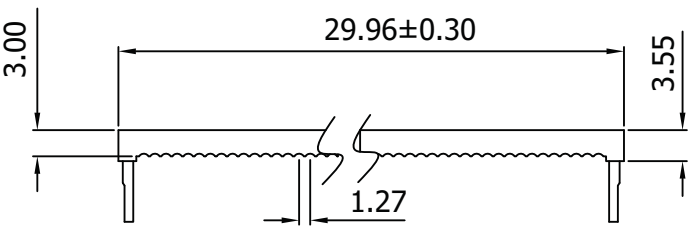


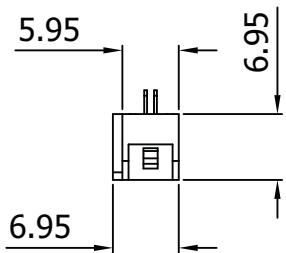
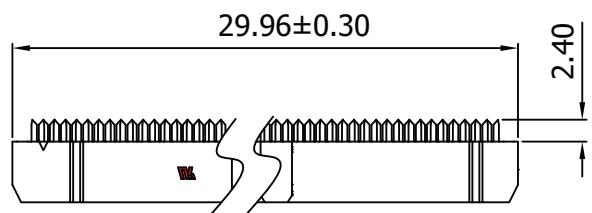
A



B

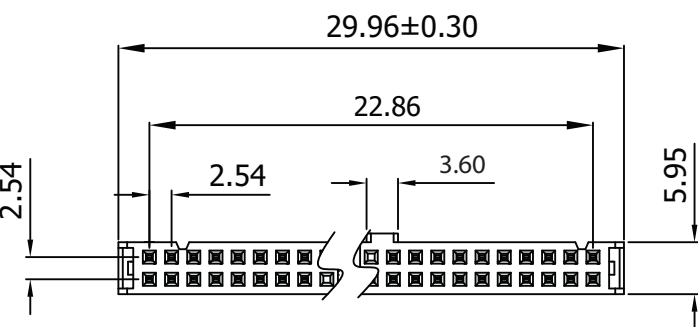


C



D

E



Material:

- Insulator: P.B.T. 30% Glass Fiber, UL 94V-0
- Contact Material: Phosphor Bronze, Gold flash over Nickel

Electrical:

- Current Rating: 1Amp
- Insulation Resistance: 1,000MΩ Min.
- Contact Resistance: 30MΩ Max.
- Dielectric Withstanding: 500V AC
- Operating Temperature: -40°C ~ +85°C

Unit: MM±0.20MM

G

| | | | | | | | | | |
|-----------|-------|--|--|--|--|--|--|-------------------------|---|
| Scale | 1:1 | | | | | | | Name | Item No. AWP20-7241-T-R |
| TOLERANCE | | | | | | | | Drawn 10.19.11 Chappell | |
| X.X | ±0.40 | | | | | | | Approved | Title IDC-Socket - 2.54MM Pitch, Gold Flash, Central Lug w/Strain Relief, 20 Contacts |
| X.XX | ±0.25 | | | | | | | | |
| X.XXX | ±0.15 | | | | | | | | |
| Angle | ±3° | | | | | | | | Drawing No. |
| | | | | | | | | | rev00 |
| | | | | | | | | | Replace |
| | | | | | | | | | Sheet |
| | | | | | | | | | |
| | | | | | | | | | |



H