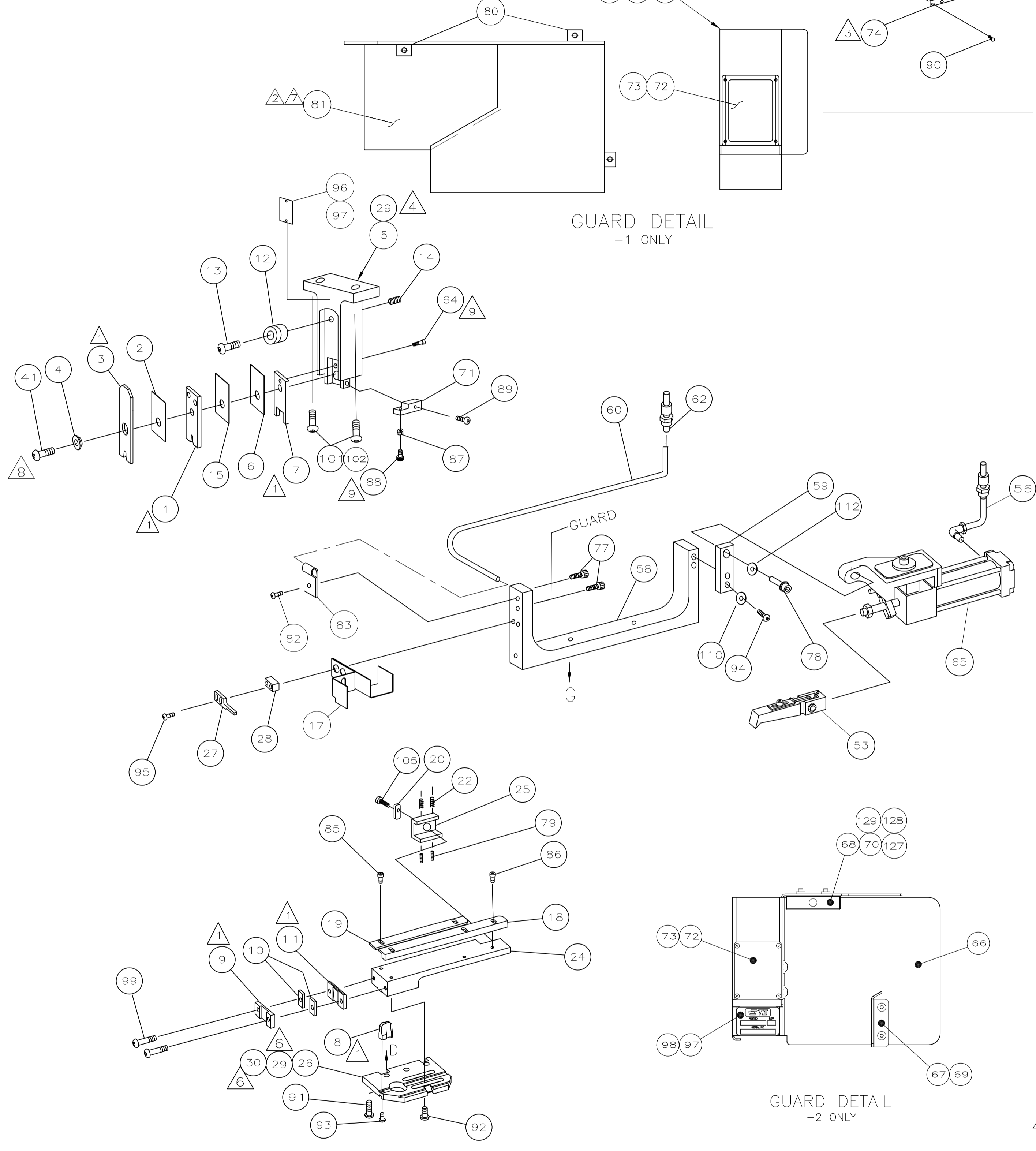


PART NUMBER	REV	FIRST USED	MACHINE REFERENCE	FEED TYPE
566411-1	D	356462-2	G-SPLICE TERM	AIR FEED
566411-2	G	2161300-1	5K CE&GII THRU SPLICE	AIR FEED
7-566411-7	D	356462-2	SPARE PARTS KIT	-
7-566411-8	G	-	CONV. KIT FOR -1 TO -2	-

TERMINAL NAME: .187 AMPLIVAR FASTON™ FLAG RECEIPT		63942		CRIMPING DATA	
PAD LTR	CRIMP HEIGHT	WIRE SIZE			
2	.046 ±.002 [1.15 ±0.05mm]	1100-1200 cma			
2	.044 ±.002 [1.12 ±0.05mm]	767-960 CMA			
2	.042 ±.002 [1.09 ±0.05mm]	500-650 CMA			
3	-	-			
CRIMP	SIZE	TYPE	RANGE		
WIRE	.070 [1.78mm]	F	500-1200 CMA		
INSUL	.070 [1.78mm]	0	.020-.040		
WIRE STRIP LENGTH	TERM APPL SPEC	FEED	APPL INSTRUCTION	SET UP GAGE	LAYOUT
-	114-2152	.570	408-8318 (-1) 408-127000 (-2)	458638-1	L1810

LOC	DIST	REVISIONS			
A	66	REV	DESCRIPTION	DATE	BY
		G	ECR-15-018000	11DEC2015	LG



QTY REQD	PER ASSY	PART NO	DESCRIPTION	ITEM NO		
2	-	2	-	18029-2	M4 HEX NUT	129
2	-	2	-	18025-2	M4 LOCK WASHER	128
2	-	2	-	18027-2	M4 FLAT WASHER	127
1	-	1	-	408-32162	THRU SPLICE IS SHEET-GII	126
-	-	1	-	408-127000	THRU SPLICE IS SHEET	125
-	-	1	1	217238-1	GENERAL INSTRUCTION PACKAGE	124
-	-	-	1	408-8318	THRU SPLICE IS SHEET	123
-	-	-	-	-	-	122
-	-	-	-	-	-	121
-	-	-	-	-	-	120
-	-	-	-	-	-	119
-	-	-	-	-	-	118
-	-	-	-	-	-	117
-	-	-	-	-	-	116
-	-	-	-	-	-	115
-	-	-	-	-	-	114
-	-	1	1	21024-8	LOCK WASHER	113
-	-	-	-	-	-	112
-	-	-	-	-	-	111
-	-	2	2	21024-5	WASHER,LOCK(#10)ST GUIDE	110
-	-	-	-	-	-	109
-	-	-	-	-	-	108
-	-	-	-	-	-	107
-	-	-	-	-	-	106
-	-	1	1	22353-8	SCR,SHLD(Ø.187x.25)DRAG LEVER	105
-	-	-	-	-	-	104
-	-	-	-	-	-	103
2	-	2	-	3-18023-3	SCR SHC (M6X50)	102
-	-	2	-	3-18023-0	SCR SHC (M6X25)	101
-	-	2	2	21017-2	SCR,DRIVE(#2x.19)ID PLATE	100
-	-	2	2	3-21002-0	SCR,BHC(10-32x.88)DRAG	99
-	-	1	1	819347-1	PLATE, IDENTIFICATION	98
-	-	AR	AR	25527-3	TAPE	97
-	-	1	1	690701-2	PLATE ID	96
-	-	2	2	2-21002-4	SCR,SHC(8-32x.50)STRIPPER	95
-	-	2	2	3-21000-5	SCR,SHC(10-32x.50)CAP	94
-	-	1	1	22733-8	SCR,BHC(8-32x.38 LW)ANVIL	93
-	-	4	4	3-21002-3	SCR,BHC(1/4-20x.50)ST GD PL	92
-	-	3	3	2-22733-8	SCR,BHC(1/4-20x.62)HSG	91
-	-	2	2	2-21002-0	SCR,BHC(8-32x.38)GUARD	90
-	-	1	1	1-21000-8	SCR SHC (6-32 x.38)	89
-	-	1	1	811242-2	HOLD DOWN BUMPER	88
-	-	1	1	21018-5	NUT, HEX 6-32	87
-	-	3	3	1-21002-7	SCR,BHC(6-32x.38)STRIP GUIDE	86
-	-	2	2	1-21002-6	SCR,BHC(6-32x.25)STRIP GUIDE	85
-	-	-	-	-	-	84
-	-	1	1	986220-9	CABLE CLAMP	83
-	-	1	1	2-21002-6	SCR,BHC(10-32x.38)CLAMP	82
-	-	-	-	1338307-1	GUARD,APPLICATOR FEED	81
-	-	-	-	1-21100-8	SCR,BHC10-24UNCX.38LG.	80
-	-	2	2	5-21006-6	SCR,SET(10-32x.75)	79
-	-	1	1	3-21001-3	SCR, CAP 3/8-16UNC x .88	78
-	-	2	2	2-21002-5	SCR,BHC(10-32x.25)GUARD	77
-	-	-	-	1338320-3	GUARD, END FEED	76
-	-	REF	REF	1490705-1	KIT, WIRE SHELF	75
-	-	-	-	662434-3	GUARD	74
-	-	4	4	1-21000-0	SCR,SHC(2-56x.25)GUARD WINDOW	73
-	-	1	1	1338174-1	WINDOW, GUARD	72
-	-	1	1	1338213-1	BRACKET, HOLDDOWN	71
-78	-77	-2	-1	PART NO	DESCRIPTION	ITEM NO

QTY REQD	PER ASSY	PART NO	DESCRIPTION	ITEM NO		
2	-	2	-	1-18023-3	SCR, SHC, M4X16	70
2	-	2	-	18024-6	SCR, BHC, M4X8	69
1	-	1	-	2168489-1	ACTUATOR, SPARE MCI	68
1	-	1	-	2161273-1	GUARD, END FEED INSERT	67
1	-	1	-	2161272-3	GUARD, END FEED	66
-	-	1	1	2-460277-2	AIR FEED ASSY (1 INCH)	65
-	-	1	1	1-21000-9	SCR, SHC (6-32 X .34)	64
-	-	-	-	-	-	63
-	-	1	1	23238-1	QUICK DISCONNECT	62
-	-	-	-	-	-	61
-	-	18.00	18.00	27319-4	TUBING, POLY-FLO Ø.25	60
-	-	1	1	1338207-1	BRACKET, FEED EXTENSION	59
-	-	1	1	1338208-1	BRACKET, FEED	58
-	-	-	-	-	-	57
-	-	1	1	692655-7	AIR FEED ASSY	56
-	-	-	-	-	-	55
-	-	-	-	-	-	54
-	-	1	1	2-460680-0	FEED FINGER ASSY	53
-	-	-	-	-	-	52
-	-	-	-	-	-	51
-	-	-	-	-	-	50
-	-	-	-	-	-	49
-	-	-	-	-	-	48
-	-	-	-	-	-	47
-	-	-	-	-	-	46
-	-	-	-	-	-	45
-	-	-	-	-	-	44
-	-	-	-	-	-	43
-	-	-	-	-	-	42
-	-	1	1	7-21002-9	BOLT, CRIMPER(5/16-24x1.00)	41
-	-	-	-	-	-	40
-	-	-	-	-	-	39
-	-	-	-	-	-	38
-	-	-	-	-	-	37
-	-	-	-	-	-	36
-	-	-	-	-	-	35
-	-	-	-	-	-	34
-	-	-	-	-	-	33
-	-	-	-	-	-	32
-	-	-	-	-	-	31
-	-	2	2	18027-4	WASHER, FLAT M6	30
-	-	2	2	2-18023-8	SCR,SHC M6 X 20	29
-	-	1	1	5-690451-2	SPACER, STRIPPER	28
-	-	1	1	240639-4	STRIPPER	27
-	-	1	1	1338398-1	PLATE, BASE	26
-	-	1	1	240792-7	DRAG, TERMINAL	25
-	-	1	1	662383-1	PLATE, STRIP GUIDE	24
-	-	-	-	-	-	23
-	-	2	2	1-22284-0	SPRING, DRAG	22
-	-	-	-	-	-	21
-	-	1	1	240793-1	LEVER, DRAG RELEASE	20
-	-	1	1	662388-1	GUIDE, STRIP (REAR)	19
-	-	1	1	662387-1	GUIDE, STRIP (FRONT)	18
-	-	1	1	1583984-1	GUIDE, WIRE	17
-	-	-	-	-	-	16
-	-	1	1	7-455888-1	SPACER, CRIMPER	15
-	-	1	1	27058-2	PLUNGER, SPRING, STUBBY	14
-	-	1	1	21004-9	SCR, SHLD .31 DIA X .50 LG.	13
-	-	1	1	1338124-1	WHEEL, ADJUSTING	12
-	-	1	1	240644-5	PLATE, REAR SHEAR	11
-	-	2	2	1-240645-2	SPACER, SHEAR PLATE	10
-	-	1	1	318704-1	PLATE, FRONT SHEAR	9
-	-	1	1	2-456537-4	ANVIL	8
-	-	1	1	1338209-2	BLADE, SLUG	7
-	-	1	1	6-455888-1	SPACER, CRIMPER	6
-	-	1	1	1338212-1	HOLDER, TOOL ASSEMBLY	5
-	-	1	1	238009-8	SPACER, BLOCK CRIMPER	4
-	-	1	1	1338211-3	CRIMPER, INSULATION	3
-	-	1	1	5-455888-8	SPACER, CRIMPER	2
-	-	1	1	1338210-3	CRIMPER, MODIFIED	1
-78	-77	-2	-1	PART NO	DESCRIPTION	ITEM NO

- 1 RECOMMENDED SPARE PARTS.
- 2 GUARD MUST BE IN PLACE WHEN OPERATING APPLICATOR IN A BENCH MACHINE.
- 3 SEE DRAWING FOR COMPONENTS
- 4 RECOMMENDED SET UP WIRE FOR TERMINAL 63941. FOR APPLICATOR QUALIFICATION ONLY.
- 5 USE MANUAL PRECISION ADJUSTMENT LEVER ON G TERMINATOR TO ACHIEVE PROPER CRIMP HEIGHT.
- 6 ITEM NOT SHOWN
- 7 ITEM 81 IS ATTACHED TO THE G TERMINATOR GUARD DOOR WITH ITEM 80.
- 8 CRIMPER BOLT MUST BE LOOSENED TO CHANGE CRIMP HEIGHT ADJUSTING WHEEL. BE SURE TO SEAT THE CRIMPER AGAINST THE ADJUSTING WHEEL AND REALIGN THE TOOLING.
- 9 CUT TO LENGTH AT ASSEMBLY.

WIRE COMBINATION DATA		
REF PAD_LTR	REF CRIMP HEIGHT	MAG WIRE
2	.044	(2) 24
2	.042	(1)25 + (1)26

THIS DRAWING IS A CONTROLLED DOCUMENT.

DIMENSIONS: INCHES	TOLERANCES UNLESS OTHERWISE SPECIFIED:	0 PLC ± -	1 PLC ± .25	2 PLC ± .25	3 PLC ± .25	4 PLC ± .25
MATERIAL	FINISH	WEIGHT	SIZE	CAGE CODE	DRAWING NO	RESTRICTED TO
-	-	-	A1	00779	566411	-

CUSTOMER DRAWING

SCALE - SHEET 1 OF 1 REV G

TE Connectivity
Harrisburg, PA 17105-3608

END FEED PIGTAIL SPLICE W/TRIM