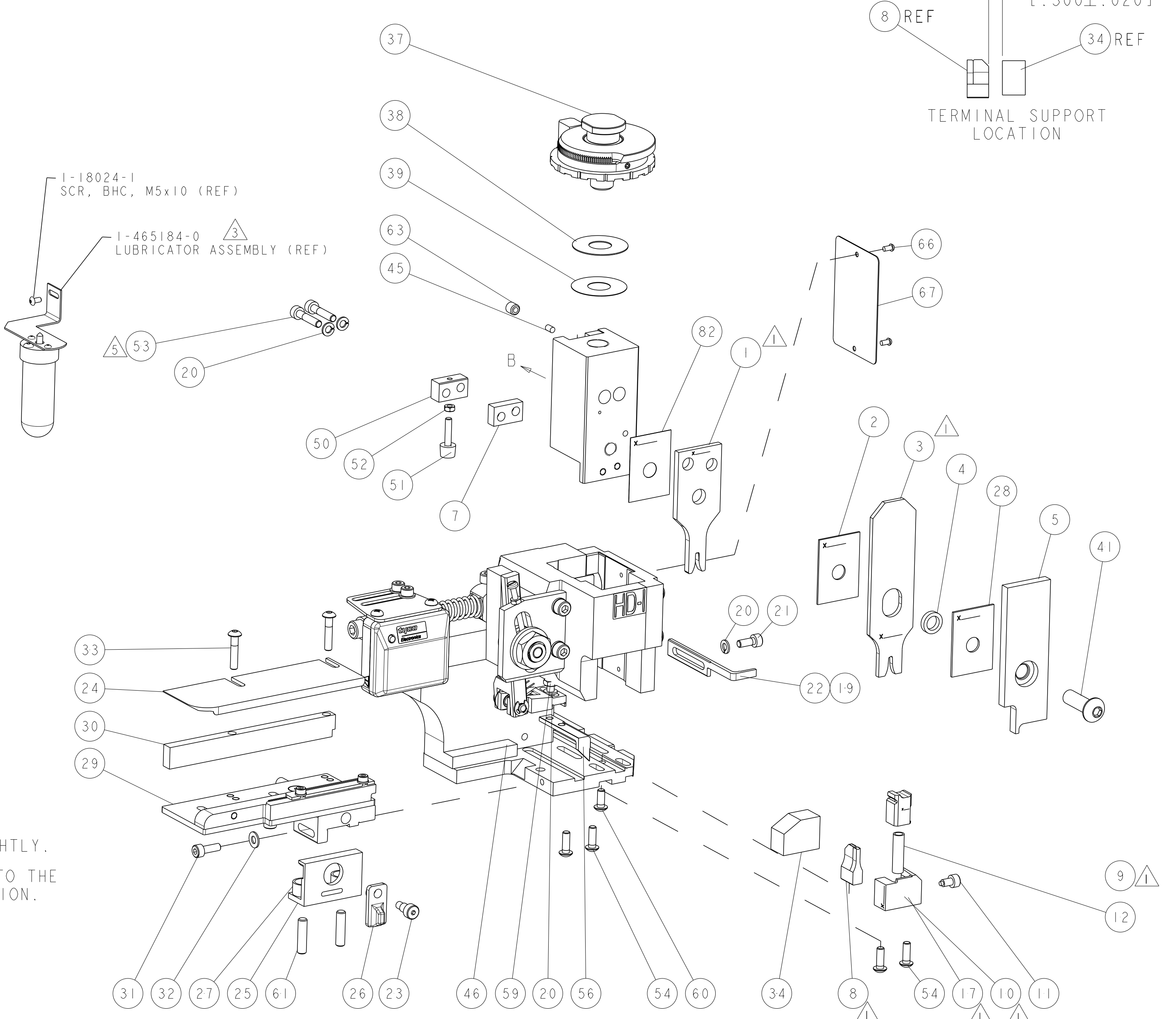


PART NUMBER	REV	TERMINATOR	FEED TYPE	DESCRIPTION
1530075-1	B	LEADMAKER	MECH POST FEED	CUTS CARRIER
1530075-2	B	BENCH	MECH PRE FEED	CUTS CARRIER
1530075-6	B	LEADMAKER	MECH POST FEED	CONTINUOUS CARRIER
7-1530075-1	B	LEADMAKER	MECH POST FEED	-1 AND SPARE PARTS
7-1530075-2	B	BENCH	MECH PRE FEED	-2 AND SPARE PARTS
7-1530075-6	B	LEADMAKER	MECH POST FEED	-6 AND SPARE PARTS
7-1530075-7	B	-	-	SPARE PARTS KIT

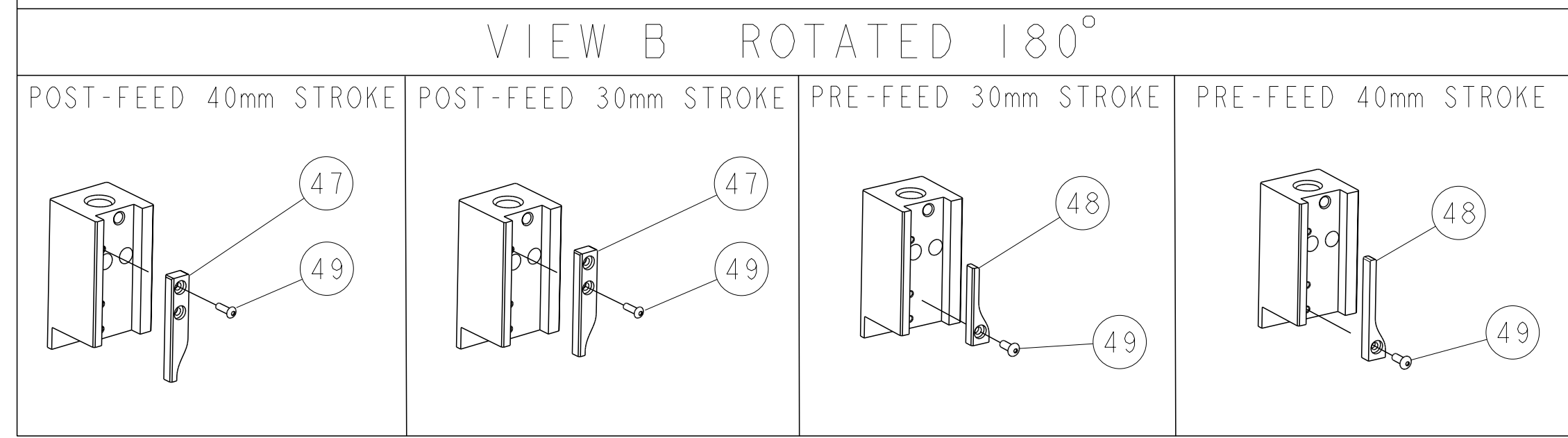
CRIMP DATA		MOLEX TERMINAL		NONE CRIMP SPECS	
TERMINAL NAME: TERMINAL					
CRIMP	SIZE	TYPE	RANGE		
WIRE	2.03 (.080 IN)	F	18 AWG		
INSUL	2.54 (.100 IN)	OV	.080 IN MAX		
WIRE STRIP LENGTH 2.00-3.00 (.078-.118 IN)		APPL INSTRUCTIONS 408-8322 & 408-8490			
TERMINAL APPL SPEC		NONE	FEED		9.65 [.380 IN]
TERMINALS APPLIED					
1949887	MLX 33088-0009	-	-	-	-
-	-	-	-	-	-
-	-	-	-	-	-
-	-	-	-	-	-
-	-	-	-	-	-
WIRE SIZE	CRIMP HEIGHT	REF SETTING			
18 AWG	1.27 ±0.05 [.050 ±.002 IN]	C-7			



SET UP GAGE		REVISONS	
LOC	DIST	DATE	BY
A	66	24MAR2009	DWW
B		08FEB2011	MY

QTY	DESCRIPTION	DATE	BY	REV
-	-	-	-	73
-	-	-	-	72
-	1338705-3	DOCUMENTATION PACKAGE	-	71
-	-	-	-	70
-	-	-	-	69
-	-	-	-	68
-	461264-5	PLATE, IDENTIFICATION	-	67
-	21017-2	SCREW, DRIVE	-	66
-	-	-	-	65
-	-	-	-	64
-	3-18031-0	SCR, SET, CUP POINT M6 X 6.0	-	63
-	-	-	-	62
-	2-18032-5	SCR, SET, FLT POINT M5 X 20.0	-	61
-	18024-7	SCR, BTN SKT HD CAP (M4 X 10.0)	-	60
-	5-18022-2	SCR, HEX HD CAP M4 X 8.0	-	59
-	-	-	-	58
-	-	-	-	57
-	1338685-1	PAWL, FEED	-	56
-	-	-	-	55
-	18024-8	SCR, BTN SKT HD CAP (M4 X 12.0)	-	54
-	1-18023-4	SCR, SKT HD CAP M4 X 20.0	-	53
-	18030-1	NUT, HEX, REG M3	-	52
-	811242-5	BUMPER, HOLD DOWN	-	51
-	690753-2	SPACER, TONKER	-	50
-	18024-3	SCR, BTN SKT HD CAP (M3 X 10.0)	-	49
-	1338675-1	CAM, UNIVERSAL PRE FEED	-	48
-	1338676-1	CAM, UNIVERSAL POST-FEED	-	47
-	1320999-3	APPLICATOR SUBASSEMBLY, HDI	-	46
-	690191-1	PLUG, NYLON	-	45
-	1633724-1	RAM (SIDE FEED)	-	44
-	-	-	-	43
-	-	-	-	42
-	2-18024-6	SCR, BTN SKT HD CAP (M8 X 25.0)	-	41
-	-	-	-	40
-	690125-1	SHIM SUB-ASSY	-	39
-	469367-9	SHIM	-	38
-	879103-3	FINE ADJUST HEAD ASSEMBLY	-	37
-	-	-	-	36
-	-	-	-	35
-	1320934-6	SUPPORT, TERMINAL	-	34
-	1-18024-0	SCR, BTN SKT HD CAP (M4 X 20.0)	-	33
-	18027-2	WASHER, FLAT, REG M4	-	32
-	1-18023-2	SCR, SKT HD CAP M4 X 12.0	-	31
-	1320908-1	SPACER, STRIP GUIDE	-	30
-	1633073-1	STRIP GUIDE ASSEMBLY	-	29
-	1-455888-0	SPACER, CRIMPER	-	28
-	1-22284-0	SPRING, COMPRESSION	-	27
-	356835-1	LEVER, DRAG RELEASE	-	26
-	240792-1	DRAG, TERMINAL	-	25
-	1320928-5	PLATE, STRIP GUIDE	-	24
-	980371-4	SCR, SKT HD SHLDR 5.0 DIA X 6.0	-	23
-	690472-2	STRIPPER	-	22
-	1-18023-1	SCR, SKT HD CAP M4 X 10.0	-	21
-	18025-2	WASHER, SPRG LOCK, REG M4	-	20
-	690472-1	STRIPPER	-	19
-	-	-	-	18
-	1338684-2	SHEAR HOLDER, FRONT	-	17
-	-	-	-	16
-	-	-	-	15
-	-	-	-	14
-	-	-	-	13
-	3-22280-3	SPRING, COMPRESSION	-	12
-	356885-5	STOP, SHEAR	-	11
-	1-1320921-0	SHEAR HOLDER, FRONT, CUT	-	10
-	462006-6	FLOATING SHEAR, FRONT	-	9
-	6-1633131-3	ANVIL, COMBINATION .080	-	8
-	1-240641-4	SPACER	-	7
-	-	-	-	6
-	2-455889-0	DEPRESSOR, SHEAR	-	5
-	238011-9	BLOCK, CRIMPER SPACER	-	4
-	4-854830-0	CRIMPER, INSULATION SPECIAL	-	3
-	455888-8	SPACER, CRIMPER	-	2
-	1-456405-3	CRIMPER, WIRE PREMIUM	-	1

- △ RECOMMENDED SPARE PARTS.
  - 2. GREASE RAM, CAM, CAM FOLLOWER AND FEED ROD LIGHTLY.
  - △ CERTAIN TERMINALS REQUIRE LUBRICATION. REFER TO THE APPLICATOR INSTRUCTION SHEET FOR MORE INFORMATION.
  - 4. LUBRICATE DAILY PER THE APPLICATOR INSTRUCTION SHEET SUPPLIED WITH THE APPLICATOR.
  - △ CUT TO LENGTH AT ASSEMBLY.
- \* WARNING  
ON INSTALLATION, SET WIRE DISC TO LARGEST WIRE SIZE SETTING. USE OF SETTINGS BELOW MIN. REQUIRED CRIMP HEIGHT SETTING WILL CAUSE DAMAGE TO CRIMP TOOLING.



QTY	DESCRIPTION	ITEM NO							
-	-	84							
-	-	83							
-	455888-1	SPACER, CRIMPER	82						
-	-	81							
-	-	80							
-	-	79							
-	-	78							
-	-	77							
-	-	76							
-	-	75							
-	-	74							
QTY	DESCRIPTION	ITEM NO							
-77	-76	-72	-71	-6	-2	-1	PART NO	DESCRIPTION	ITEM NO