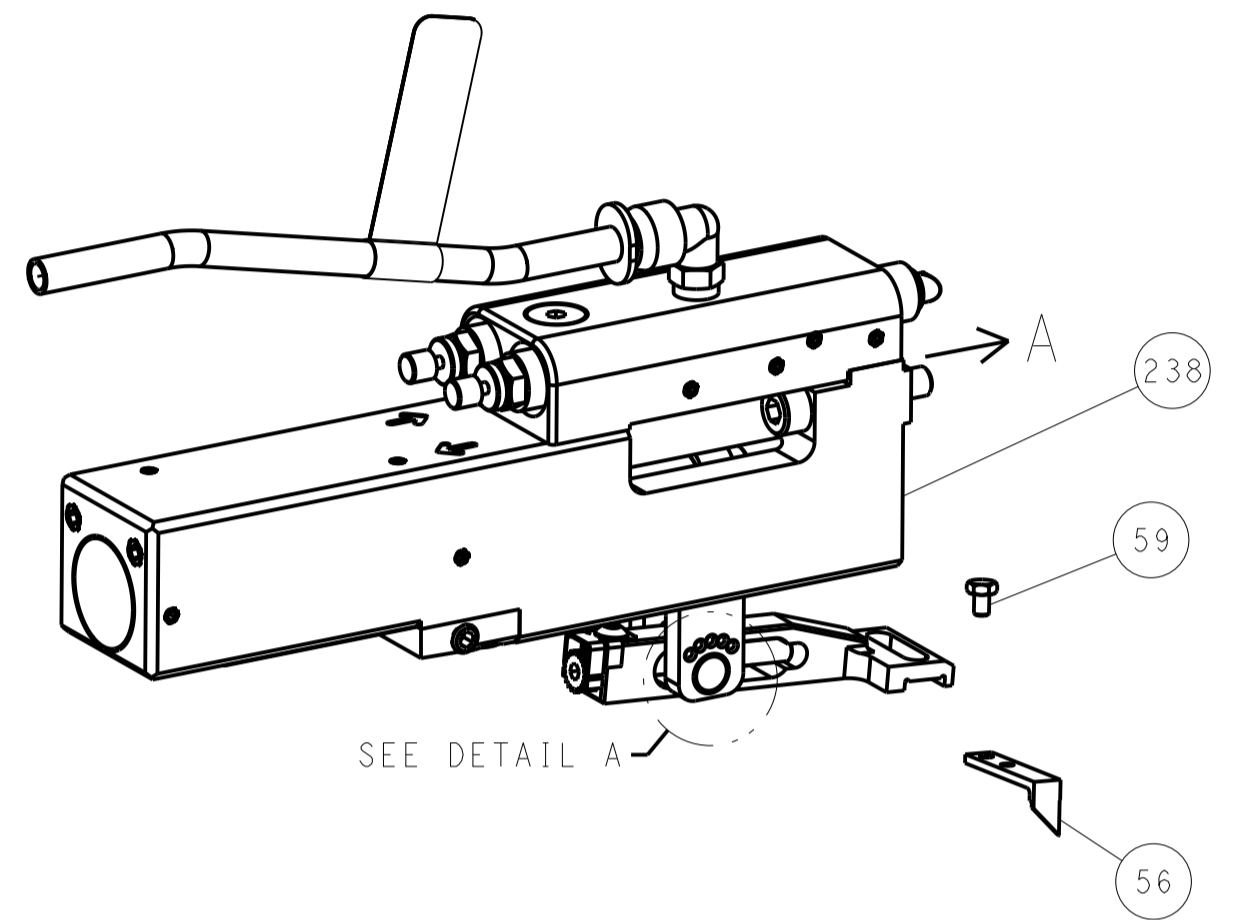


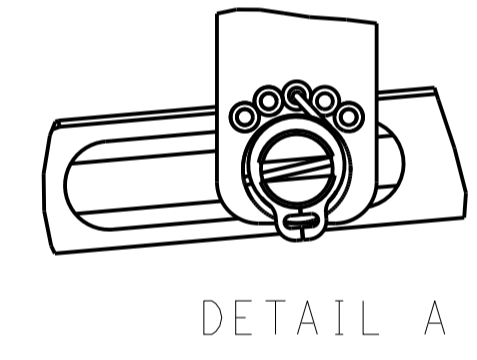
LOC		DIST		REVISIONS			
A		66		REV	DATE	BY	APP'D
				1	SEE SHEET 1		

FEED TYPE

PNEUMATIC

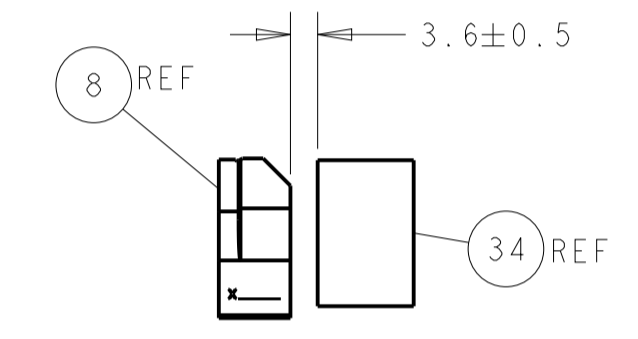
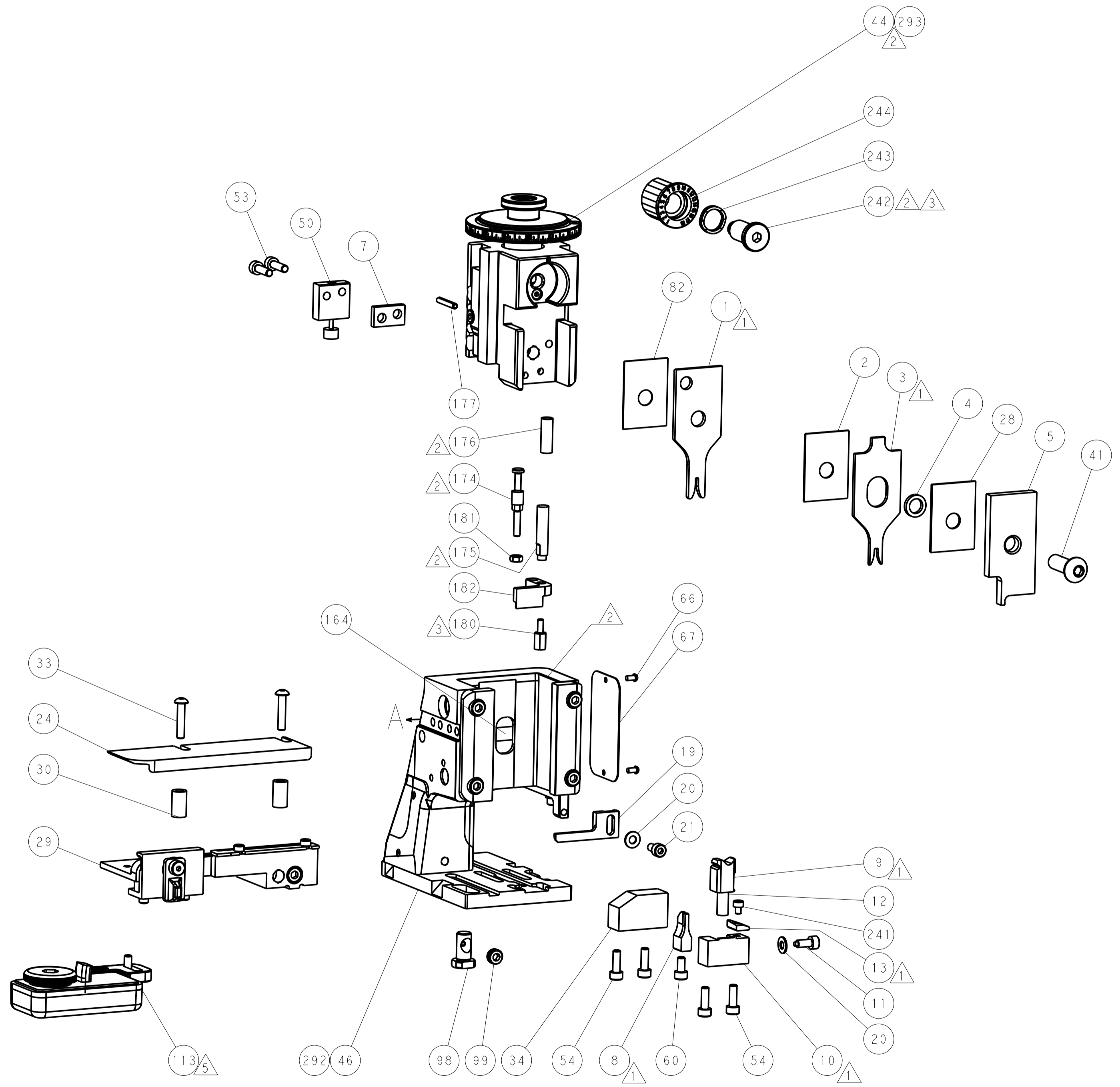
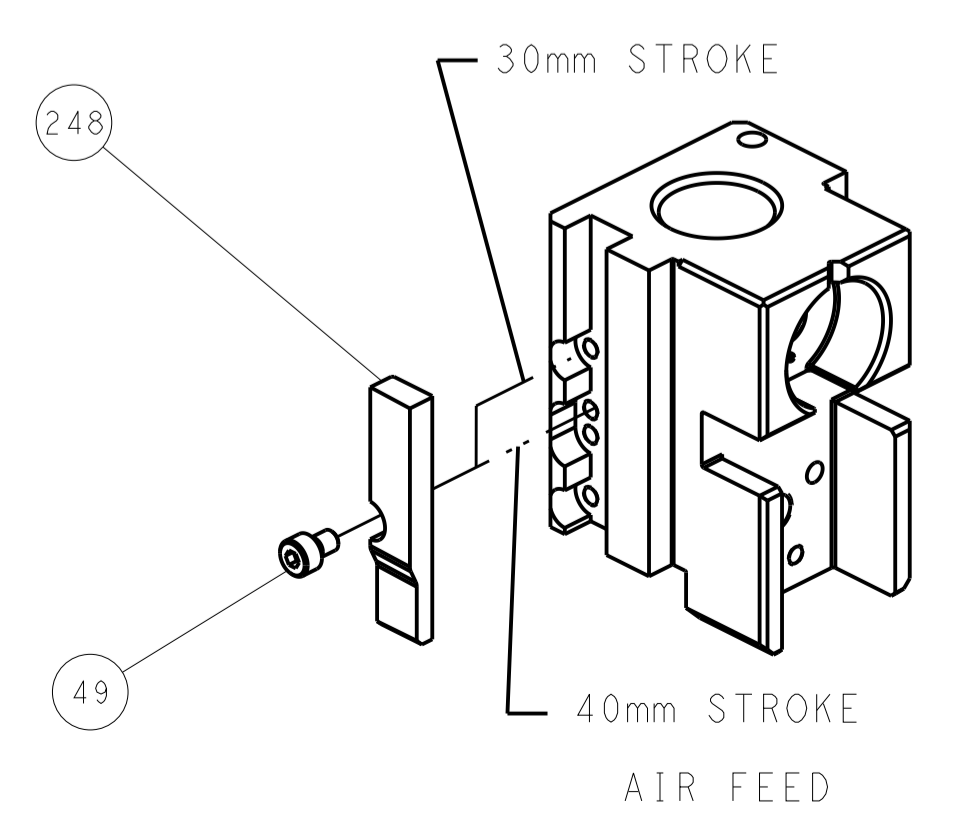


FEED SPRING SETTING POSITION (SHOWN FROM REAR SIDE)

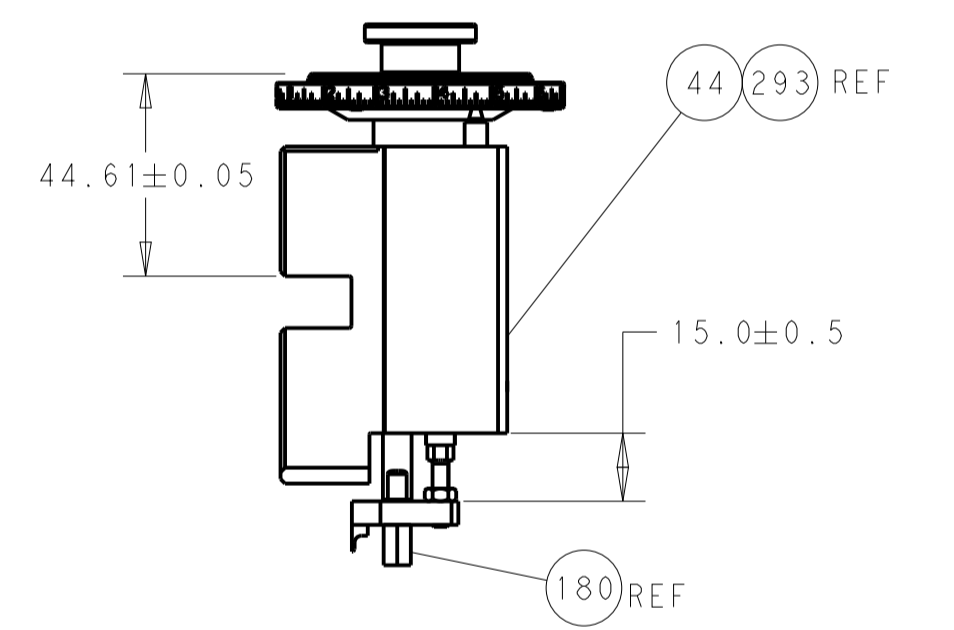


DETAIL A

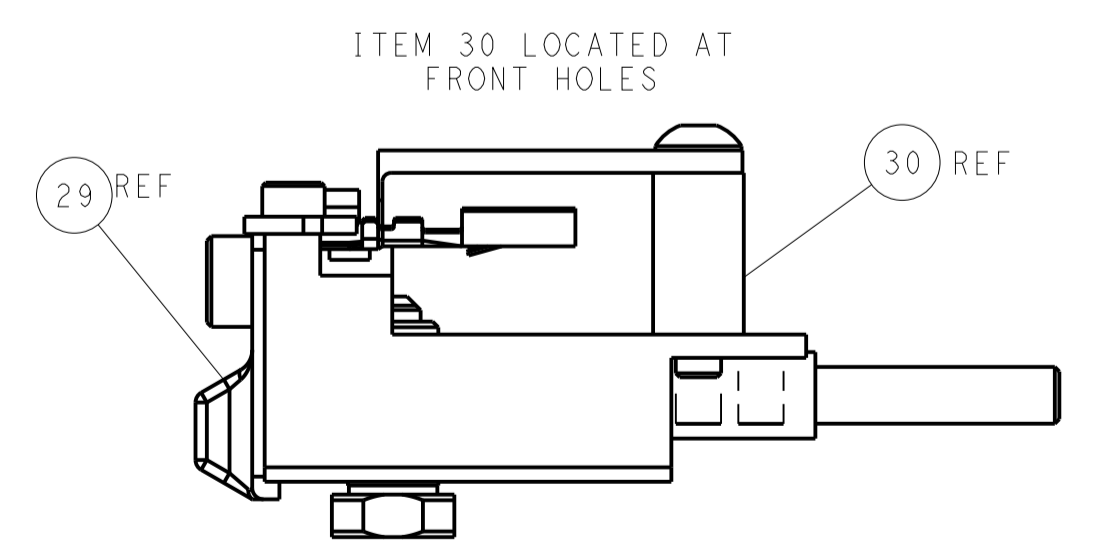
CAM POSITION



TERMINAL SUPPORT LOCATION



RAM AND HOLDDOWN SET-UP



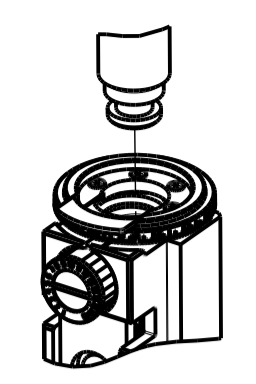
FEED TRACK POSITION GUIDE BY INSULATION BARREL

ATLANTIC VERSION
 Shown on sheets 1 of 4 & 2 of 4
 (Pacific version shown on sheets 3 of 4 & 4 of 4)

DIMENSIONS:		TOLERANCES UNLESS OTHERWISE SPECIFIED:		DWG: HOFFNER 07NOV2012		TE Connectivity	
mm	0 PLC	±		CHK: T. ELBIN 08NOV2012	NAME: Ocean Side Feed Applicator		TE Connectivity Harrisburg, PA 17105-3608
	1 PLC	±		APP'D: T. ELBIN 08NOV2012	RESTRICTED TO:		
	2 PLC	±		PRODUCT SPEC	SCALE: 1:2		SHEET 2 OF 4
	3 PLC	±		APPLICATION SPEC	REV: 1		
	4 PLC	±		WEIGHT	CAGE CODE: A1100779		DRAWING NO: 2151808
MATERIAL:	FINISH:			Customer Accessible Production Drawing			

PART NUMBER	REVISION	DESCRIPTION	FEED TYPE
2-2151808-2	D	FINE CRIMP HEIGHT ADJUST	PNEUMATIC
7-2151808-7	A	CRIMP TOOLING KIT	-

PACIFIC VERSION TERMINATOR
 INTERFACE ADAPTER



APPLICATOR DATA		
CRIMP	SIZE	TYPE
WIRE	1.58 mm [.062]	F
INSUL	2.30 mm [.091]	F

APPLICATOR INSTRUCTIONS
 408-35042

TERMINAL DATA: TE TERMINAL		TE CRIMP SPECIFICATION	
TERMINAL NAME: JUNIOR-TIMER CONTACT			
WIRE STRIP LENGTH		INSULATION DIAMETER RANGE	
3.40-4.00 mm [.134-.157 IN]		Ø1.20-1.60 mm [.047-.063 IN]	
TERMINAL APPLICATION SPECIFICATION	114-18079	-	-
TERMINALS APPLIED			
TE TERMINAL	TE TERMINAL	TE TERMINAL	TE TERMINAL
927871-1	927871-2	927871-4	

TERMINAL DATA: TE TERMINAL		TE CRIMP SPECIFICATION	
TERMINAL NAME: JUNIOR-TIMER CONTACT			
WIRE STRIP LENGTH		INSULATION DIAMETER RANGE	
3.40-4.00 mm [.134-.157 IN]		Ø1.00-1.60 mm [.039-.063 IN]	
TERMINAL APPLICATION SPECIFICATION	114-18080	-	-
TERMINALS APPLIED			
TE TERMINAL	TE TERMINAL	TE TERMINAL	TE TERMINAL
926984-1	926984-2	1-926984-1	2378282-1

WIRE SIZE	CRIMP HEIGHT mm [INCH]	CRIMP HEIGHT REFERENCE SETTING
0.50mm2	1.06+/-0.05 [.042+/-0.002]	6.9
0.37mm2	0.99+/-0.05 [.039+/-0.002]	7.8
0.25mm2	0.93+/-0.05 [.037+/-0.002]	8.2
0.20mm2	0.91+/-0.05 [.036+/-0.002]	8.4

WIRE SIZE	CRIMP HEIGHT mm [INCH]	CRIMP HEIGHT REFERENCE SETTING
0.50mm2	1.06+/-0.05 [.042+/-0.002]	6.9
0.37mm2	0.99+/-0.05 [.039+/-0.002]	7.8
0.25mm2	0.93+/-0.05 [.037+/-0.002]	8.2
0.20mm2	0.91+/-0.05 [.036+/-0.002]	8.4

- RECOMMENDED SPARE PARTS
- REFER TO SUPPLIED INSTRUCTION SHEET FOR CLEANING, LUBRICATION AND STORAGE OF APPLICATOR.
- APPLY PART NUMBER 2-23419-6 LOCTITE TO THREADS OF ITEM 242.
- CRIMP HEIGHT REFERENCE SETTING WAS THE SETTING USED WHEN THE APPLICATOR WAS QUALIFIED AT THE FACTORY. ADJUSTMENT MAY BE NECESSARY WHEN RUNNING APPLICATOR IN THE FIELD.
- TERMINAL LUBRICANT IS RECOMMENDED.
- 6. UNLESS SPECIFIED OTHERWISE TORQUE VALUES SHALL BE USED PER DOCUMENT, 101-35000.
- TERMINAL PITCH NOT COMPATIBLE WITH MECHANICAL FEED.

***WARNING**
 ON INSTALLATION, SET WIRE DISC TO CRIMP HEIGHT REFERENCE SETTING FOR LARGEST WIRE SIZE. CRIMP HEIGHT REFERENCE SETTINGS GREATER THAN THE VALUE SHOWN MAY CAUSE DAMAGE TO THE CRIMP TOOLING. REFER TO THE INSTRUCTION SHEET FOR PROPER SETUP AND ADJUSTMENTS.

LOC	DIST	REV	DATE	BY	APPV
A	66	-	-	-	-

REV	DATE	DESCRIPTION	DATE	BY	APPV
-	1	2119082-8			
-	1	2079764-1			
-	1	2119083-1			
-	1	7-18023-7			
-	1	2844940-1			
-	REF	994970-2			
-	1	2119641-2			
-	1	2168083-8			
-	4	2168083-9			
-	1	1-1803583-0			
-	1	1803516-1			
-	1	2119955-1			
-	1	2844908-1			
-	1	2844907-1			
-	1	455888-5			
-	1	1803607-3			
-	1	2119740-1			
-	2	2168078-1			
-	1	5-18022-5			
-	1	1338685-1			
-	2	2-2168083-5			
-	1	1803382-6			
-	1	18023-9			
-	1	1803602-1			
-	1	1752356-3			
-	2	2079383-5			
-	2	2-2844962-6			
-	1	2844992-1			
-	1	1-455888-0			
-	1	1320928-2			
-	1	2168083-2			
-	2	1-18028-2			
-	1	2119533-1			
-	1	2119806-1			
-	1	3-22280-3			
-	1	1-356885-4			
-	1	2119805-1			
-	1	1803095-1			
-	1	1-1333202-0			
-	1	240641-5			
-	-	-			
-	1	2119757-5			
-	1	2-238011-2			
-	1	1-2119582-1			
-	1	455888-8			
-	1	1-456403-3			
-	77	-22			

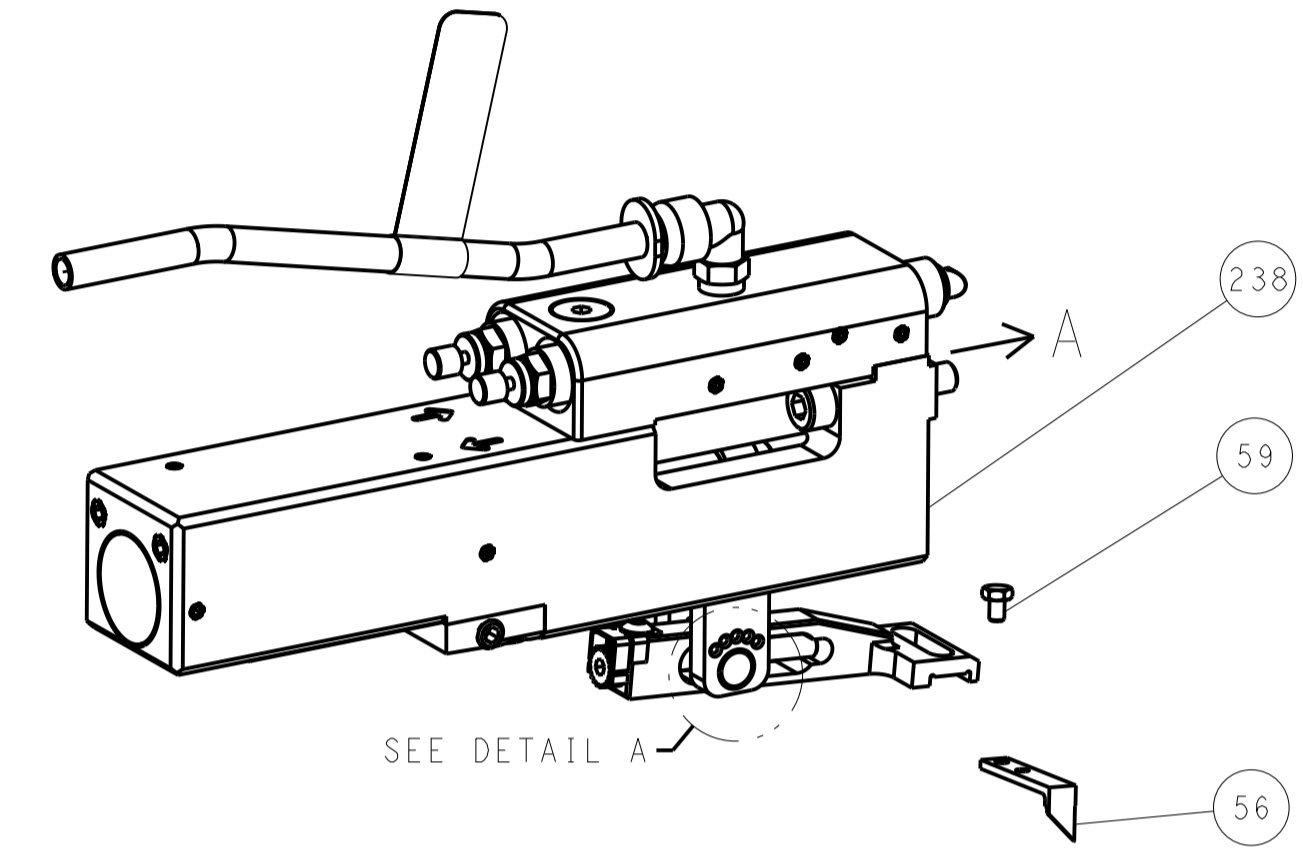
PACIFIC VERSION
 Shown on sheets 3 of 4 & 4 of 4
 (Atlantic version shown on sheets 1 of 4 & 2 of 4)

DIMENSIONS: mm		TOLERANCES UNLESS OTHERWISE SPECIFIED:		DWG: HOFFNER 07NOV2012		CHK: T.ELBIN 08NOV2012		APPV: T.ELBIN 08NOV2012		NAME: Ocean Side Feed Applicator	
0 PLC	±	1 PLC	±	2 PLC	±	3 PLC	±	4 PLC	±	SIZE: A1	CAGE CODE: 00779
ANGLES	±	FINISH	±	WEIGHT	±	SCALE: 1:2	SHEET: 3	OF: 4	REV: 1	Customer Accessible Production Drawing	

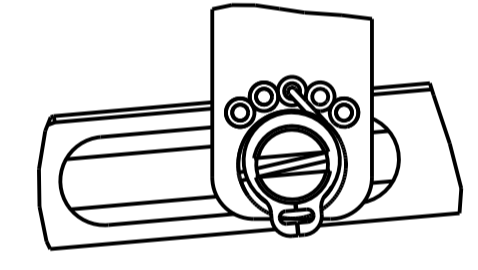
LOC		DIST		REVISIONS			
A	66	P	LTM	DESCRIPTION	DATE	OWN	APVD
		-	-	SEE SHEET 1	-	-	-

FEED TYPE

PNEUMATIC

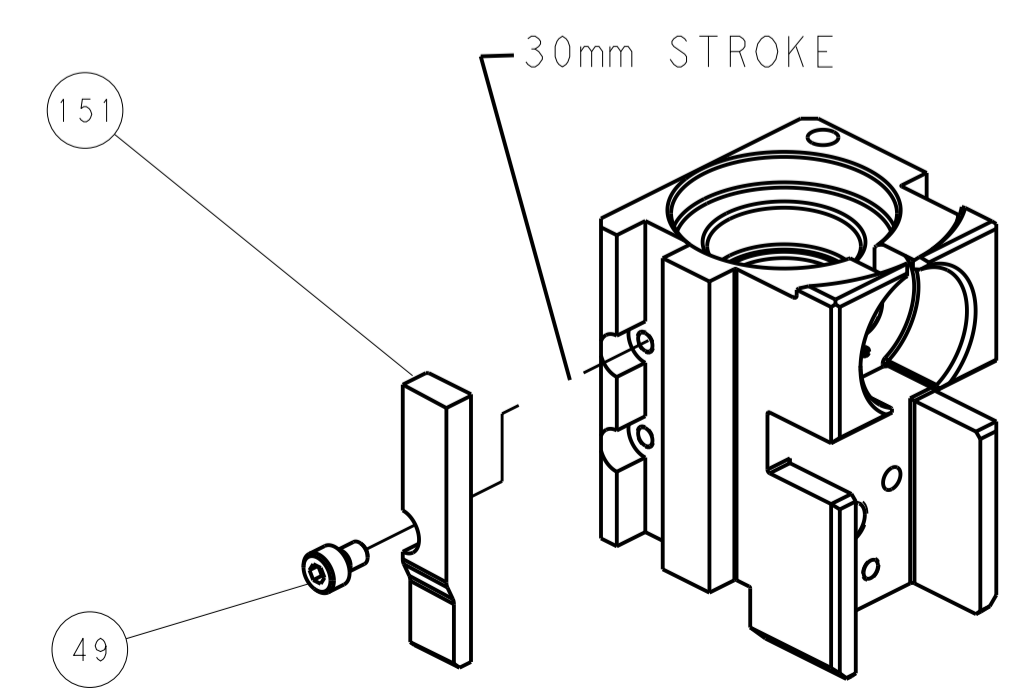


FEED SPRING SETTING POSITION (SHOWN FROM REAR SIDE)

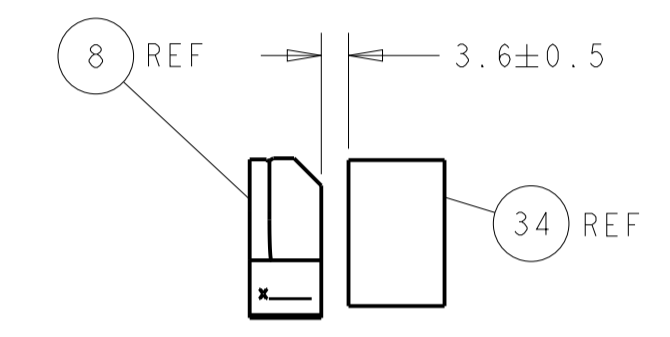
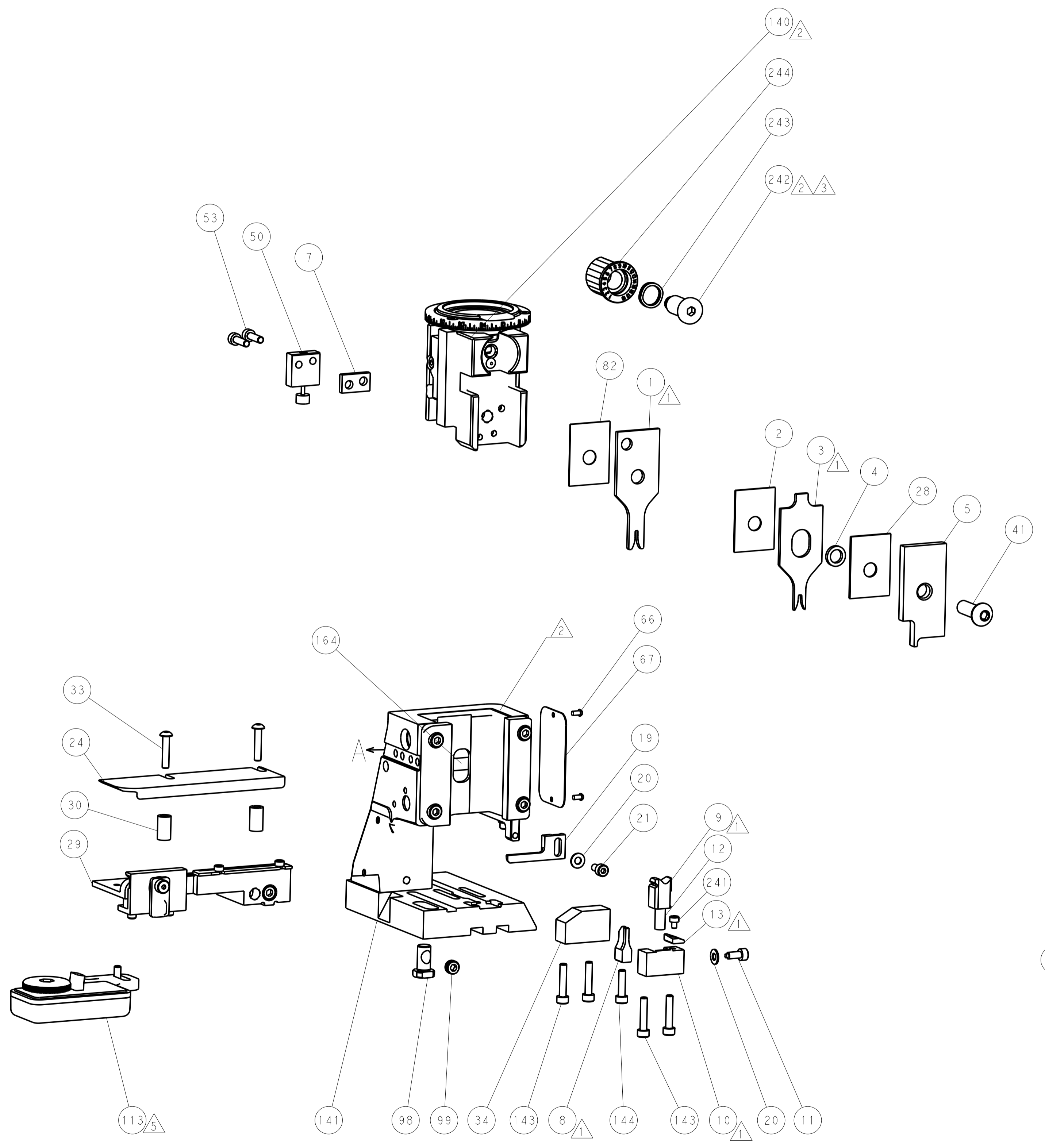


DETAIL A

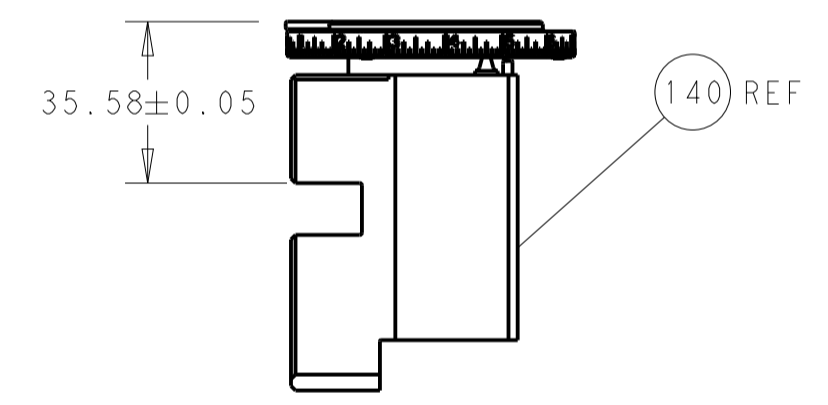
CAM POSITION



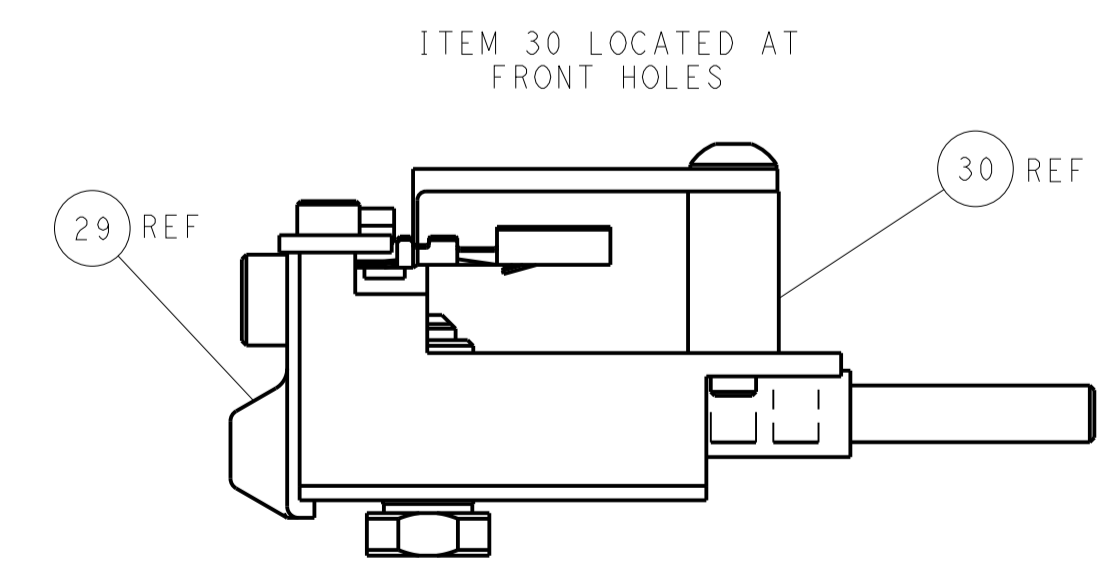
AIR FEED



TERMINAL SUPPORT LOCATION



RAM SET-UP



FEED TRACK POSITION GUIDE BY INSULATION BARREL

PACIFIC VERSION
 Shown on sheets 3 of 4 & 4 of 4
 (Atlantic version shown on sheets 1 of 4 & 2 of 4)

<small>THIS DRAWING IS UNPUBLISHED. RELEASED FOR PUBLICATION. IT IS THE PROPERTY OF TYCO ELECTRONICS CORPORATION. IT IS SUBJECT TO CHANGE AND WITHOUT WARRANTY OF ANY KIND. CONTACT YOUR LOCAL TYCO REPRESENTATIVE FOR THE LATEST REVISION.</small>		DWN: HOFFNER 07NOV2012 CHK: T. ELBIN 08NOV2012 APVD: T. ELBIN 08NOV2012	TE Connectivity Harrisburg, PA 17105-3608
DIMENSIONS: mm TOLERANCES UNLESS OTHERWISE SPECIFIED: 0 PLC ± 1 PLC ± 2 PLC ± 3 PLC ± 4 PLC ± ANGLES ±		PRODUCT SPEC APPLICATION SPEC WEIGHT SCALE: 1:2	NAME: Ocean Side Feed Applicator SIZE: A1 CAGE CODE: 00779 DRAWING NO: C=2151808 SHEET 4 OF 4 REV D1