

6

5

4

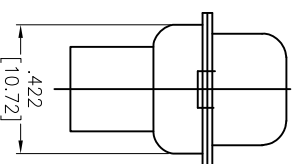
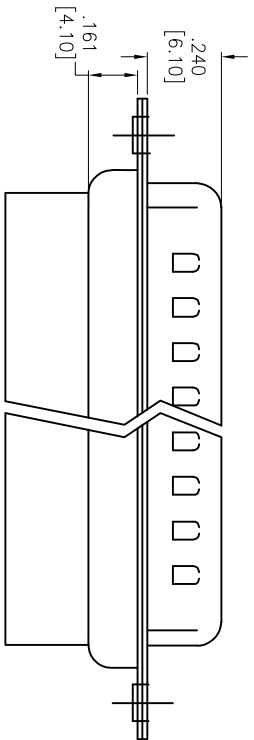
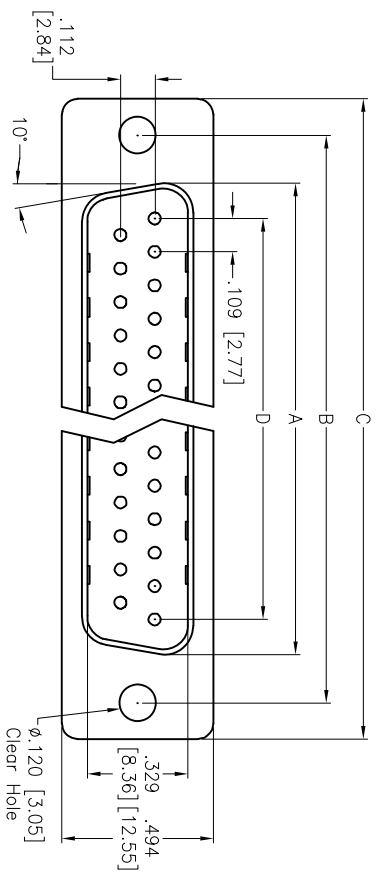
3

2

1

APPROVED: \_\_\_\_\_  
 DATE: \_\_\_\_\_ TITLE: \_\_\_\_\_

Rev	AWO #	Description	Date	Appr
-		RELEASED	4/29/05	
A		REDRAWN	04/16/12	



DXXX	NO. OF CONTACTS	DIMENSIONS			
		A	B	C	D
DE09	9	.666 [16.92]	.984 [24.99]	1.213 [30.81]	.436 [11.08]
DA15	15	1.004 [25.50]	1.312 [33.32]	1.541 [39.14]	.763 [19.39]
DB25	25	1.534 [38.96]	1.852 [47.04]	2.088 [53.04]	1.309 [33.24]
DC37	37	2.182 [55.42]	2.500 [63.50]	2.729 [69.32]	1.963 [49.86]

**SPECIFICATIONS:**  
 Material: Insulator: PBT, glass reinforced, rated UL 94V-0  
 Insulator color: Black  
 Contacts: Copper Alloy  
 Shell: Steel, Tin plated  
 Plating: Gold flash over Nickel underplate overall.  
 Electrical: Insulation resistance: 1,000 Mohms min  
 Dielectric withstanding voltage: 1,000 VAC for 1 minute  
 Temperature Rating: Operating temperature: -55°C to +105°C  
 Environmental: Lead free, RoHS compliant

**ADAM TECH**

909 Rahway Avenue, Union, NJ 07083  
 Phone: 908-687-5000 Fax: 908-687-5710

TITLE: D-SUB PLUG, CRIMP AND POKE  
 .120 [3.05] MOUNTING HOLES

UNLESS OTHERWISE SPECIFIED ALL DIMENSIONS ARE INCHES [MM]		TOLERANCES: EXCEPT AS NOTED	
INCHES		HOLE SIZES	
.X	± .10	Ø.X	± .10
.XX	± .020	Ø.XX	± .015
.XXX	± .015	Ø.XXX	± .010
APPROVALS		DATE	
DRAWN	SS	4/29/05	
CHECKED			
APPROVED			
SIZE	PART NO.	REV.	
X	DXXX-PR	A	
REF:	S00087T	SCALE:	NTS
		SHEET	1 OF 1



6

5

4

3

2

1