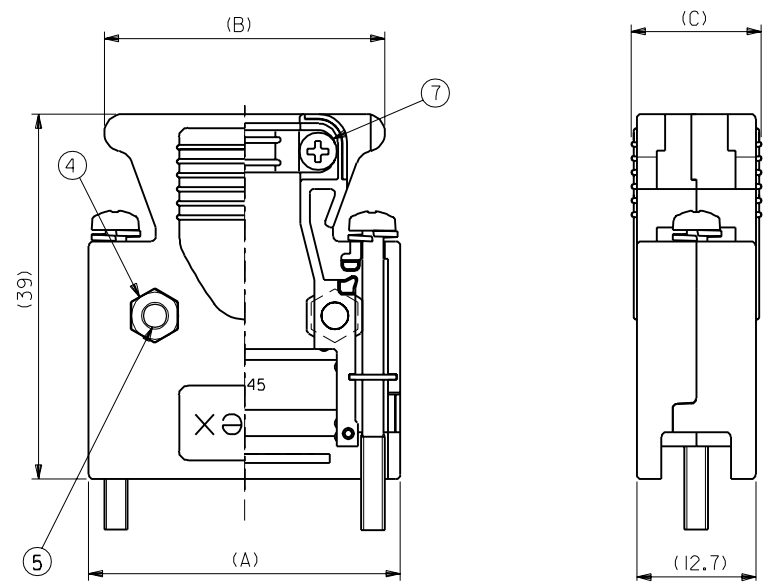
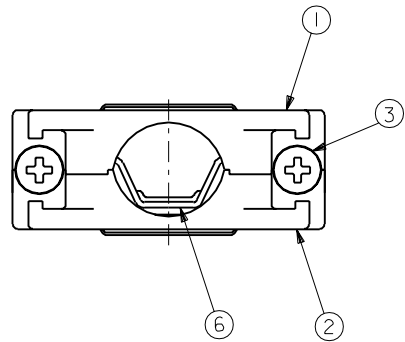


DWG. NO. SD-54331-1**1



20極形状

No.	DESCRIPTION	MATERIAL	QUANTITY	NOTES
1	CABLE COVER (A)	ALUMINUM DIE CAST	1	
2	CABLE COVER (B)	ALUMINUM DIE CAST	1	
3	CROSS RECESSED HEAD SCREW	STEEL	2	M2.5X3.1
4	HEXAGON NUT	STEEL	2	M2.5
5	CROSS RECESSED HEAD SCREW	STEEL	2	M2.5X10
6	CRAMP	SPCC-SD	1	+0.6
7	CROSS RECESSED HEAD SCREW	STEEL	2	M2X6

注)
NOTE.

- 1. ねじ締め付けトルク： ケース用 (M2.5x10) : 5~5.5Kgf・cm
Recommended screw tightening torque (For case ass'y)
- ケーブルクランプ用 (M2x6) : 3~3.5Kgf・cm
(For cable clamp)
- リセプタクル固定用 (M2.5x3.1) : 3~3.5Kgf・cm
(For fixed with receptacle conn.)

Ø 12 MAX.	13.9	33.81	37.11	54331-1261	26
	13.9	30	33.3	54331-1201	20
ケーブル外覆仕上り径 CABLE DIA.	C	B	A	ENG.No.	CKT

<table border="1"> <tr> <td>角度 ANGLE</td> <td>+3°</td> </tr> <tr> <td>30°以上 OVER</td> <td>+0.3</td> </tr> <tr> <td>10°以上 30°未満 UNDER</td> <td>+0.25</td> </tr> <tr> <td>10°未満 UNDER</td> <td>+0.2</td> </tr> </table>		角度 ANGLE	+3°	30°以上 OVER	+0.3	10°以上 30°未満 UNDER	+0.25	10°未満 UNDER	+0.2	<table border="1"> <tr> <th>記号 LTR</th> <th>変更内容 REVISION RECORD</th> <th>DR. CHK.</th> <th>日付 DATE</th> </tr> <tr> <td>F</td> <td>変更 (JD2000-0271)</td> <td>H.T. S.I.</td> <td>99/09/16</td> </tr> <tr> <td>E</td> <td>変更 (JD91457)</td> <td>H.T. Y.I.</td> <td>99/05/10</td> </tr> <tr> <td>D</td> <td>変更 (JD90929)</td> <td>M.Y. Y.I.</td> <td>99/01/08</td> </tr> <tr> <td>C</td> <td>変更 (JD90890)</td> <td>Y.K. Y.I.</td> <td>98/12/24</td> </tr> <tr> <td>B</td> <td>変更 (JD90736)</td> <td>H.T. Y.I.</td> <td>98/11/26</td> </tr> <tr> <td>A</td> <td>変更 (JD90537)</td> <td>Y.K. Y.I.</td> <td>98/10/13</td> </tr> <tr> <td>0</td> <td>新規作成 (JD90244)</td> <td>Y.K. Y.I.</td> <td>98/08/21</td> </tr> </table>		記号 LTR	変更内容 REVISION RECORD	DR. CHK.	日付 DATE	F	変更 (JD2000-0271)	H.T. S.I.	99/09/16	E	変更 (JD91457)	H.T. Y.I.	99/05/10	D	変更 (JD90929)	M.Y. Y.I.	99/01/08	C	変更 (JD90890)	Y.K. Y.I.	98/12/24	B	変更 (JD90736)	H.T. Y.I.	98/11/26	A	変更 (JD90537)	Y.K. Y.I.	98/10/13	0	新規作成 (JD90244)	Y.K. Y.I.	98/08/21	<table border="1"> <tr> <td>材料 MATERIAL</td> <td>SEE TABLE</td> </tr> <tr> <td>仕上げ FINISH</td> <td>—</td> </tr> <tr> <td>適用電線範囲 WIRE RANGE</td> <td>—</td> </tr> <tr> <td>被覆外径 INS. RANGE</td> <td>—</td> </tr> <tr> <td>DRAWN BY</td> <td>Y.KAWASAKI</td> </tr> <tr> <td>CHK'D BY</td> <td>Y.D.G.</td> </tr> <tr> <td>APP'D BY</td> <td>Y.D.G.</td> </tr> <tr> <td>DATE</td> <td>98/08/21</td> </tr> <tr> <td>尺度 SCALE</td> <td>2-1</td> </tr> </table>		材料 MATERIAL	SEE TABLE	仕上げ FINISH	—	適用電線範囲 WIRE RANGE	—	被覆外径 INS. RANGE	—	DRAWN BY	Y.KAWASAKI	CHK'D BY	Y.D.G.	APP'D BY	Y.D.G.	DATE	98/08/21	尺度 SCALE	2-1	<table border="1"> <tr> <td colspan="2">MATERIAL</td> </tr> <tr> <td colspan="2">SEE TABLE</td> </tr> <tr> <td colspan="2">REVISE ONLY ON CAD SYSTEM</td> </tr> <tr> <td colspan="2">TITLE 名称</td> </tr> <tr> <td colspan="2">1.27mm PITCH I/Ø CONN</td> </tr> <tr> <td colspan="2">CABLE HS'G ASS'Y</td> </tr> <tr> <td>DWG. NO.</td> <td>SD-54331-1**1</td> </tr> <tr> <td>REV</td> <td>F</td> </tr> </table>		MATERIAL		SEE TABLE		REVISE ONLY ON CAD SYSTEM		TITLE 名称		1.27mm PITCH I/Ø CONN		CABLE HS'G ASS'Y		DWG. NO.	SD-54331-1**1	REV	F
角度 ANGLE	+3°																																																																																
30°以上 OVER	+0.3																																																																																
10°以上 30°未満 UNDER	+0.25																																																																																
10°未満 UNDER	+0.2																																																																																
記号 LTR	変更内容 REVISION RECORD	DR. CHK.	日付 DATE																																																																														
F	変更 (JD2000-0271)	H.T. S.I.	99/09/16																																																																														
E	変更 (JD91457)	H.T. Y.I.	99/05/10																																																																														
D	変更 (JD90929)	M.Y. Y.I.	99/01/08																																																																														
C	変更 (JD90890)	Y.K. Y.I.	98/12/24																																																																														
B	変更 (JD90736)	H.T. Y.I.	98/11/26																																																																														
A	変更 (JD90537)	Y.K. Y.I.	98/10/13																																																																														
0	新規作成 (JD90244)	Y.K. Y.I.	98/08/21																																																																														
材料 MATERIAL	SEE TABLE																																																																																
仕上げ FINISH	—																																																																																
適用電線範囲 WIRE RANGE	—																																																																																
被覆外径 INS. RANGE	—																																																																																
DRAWN BY	Y.KAWASAKI																																																																																
CHK'D BY	Y.D.G.																																																																																
APP'D BY	Y.D.G.																																																																																
DATE	98/08/21																																																																																
尺度 SCALE	2-1																																																																																
MATERIAL																																																																																	
SEE TABLE																																																																																	
REVISE ONLY ON CAD SYSTEM																																																																																	
TITLE 名称																																																																																	
1.27mm PITCH I/Ø CONN																																																																																	
CABLE HS'G ASS'Y																																																																																	
DWG. NO.	SD-54331-1**1																																																																																
REV	F																																																																																

DWG. NO. SD-54331-1**1

E

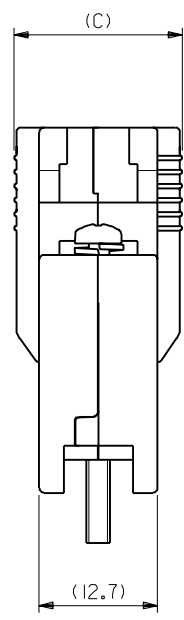
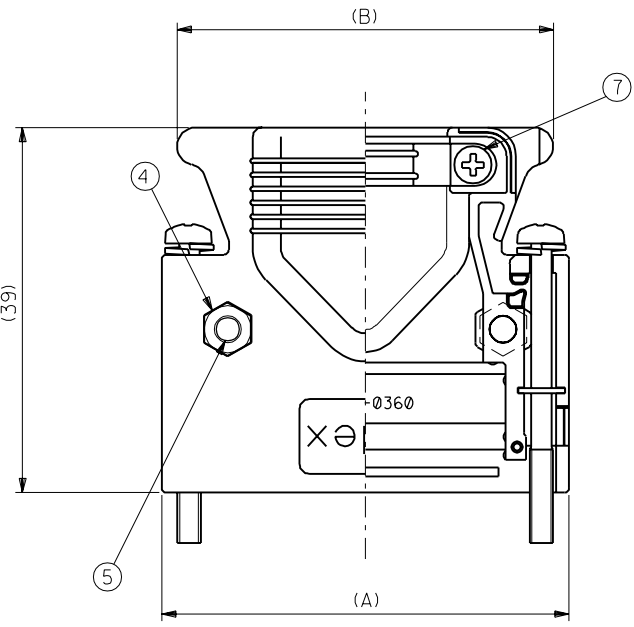
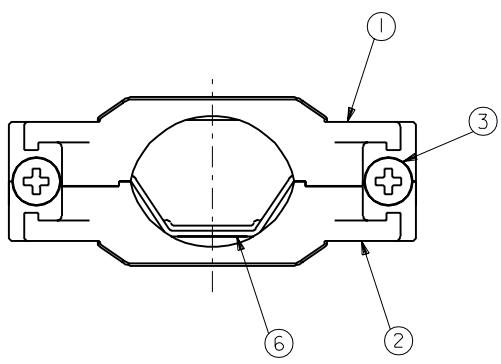
D

C
DIMENSIONS IN METRIC DO NOT SCALE DRAWING

B

A

MM



36極形状

No.	DESCRIPTION	MATERIAL	QUANTITY	NOTES
1	CABLE COVER (A)	ALUMINUM DIE CAST	1	
2	CABLE COVER (B)	ALUMINUM DIE CAST	1	
3	CROSS RECESSED HEAD SCREW	STEEL	2	M2.5X3.1
4	HEXAGON NUT	STEEL	2	M2.5
5	CROSS RECESSED HEAD SCREW	STEEL	2	M2.5X10
6	CRAMP	SPCC-SD	1	t=0.6
7	CROSS RECESSED HEAD SCREW	STEEL	2	M2X6

注)
NOTE.

- 1. ねじ締め付けたトルク : ケース用 (M2.5x10) : 5~5.5Kgf・cm
Recommended screw (For case ass'y)
- ケーブルクランプ用 (M2x6) : 3~3.5Kgf・cm
(For cable clamp)
- リセプタクル固定用 (M2.5x3.1) : 3~3.5Kgf・cm
(For fixed with receptacle conn.)

Ø16 MAX.	18.0	49.05	52.35	54331-1501	50
	18.0	40.16	43.46	54331-1361	36
ケーブル外覆仕上り径 CABLE DIA.	C	B	A	ENG.No.	CKT

角度 ANGLE	±3°											材料 MATERIAL	SEE TABLE	MOLEX-JAPAN CO.,LTD. 日本モレックス株式会社
30以上 OVER	+0.3											仕上げ FINISH	---	
10以上 30未満 UNDER	+0.25											適用電線範囲 WIRE RANGE	---	TITLE 名称
10未満 UNDER	+0.2											被覆外径 INS. RANGE	---	1.27mm PITCH I/Ø CONN CABLE HS'G ASS'Y
一般公差 GENERAL TOLERANCES		記号 LTR	変更内容 REVISION RECORD	DR. CHK.	日付 DATE	APP'D BY	尺度 SCALE	2-1	DRAWN BY Y.KAWASAKI CHK'D BY <i>Y. Maki</i>		DWG. NO.	SD-54331-1**1		REV
		0	新規作成 (JD90244) RELEASED	Y.K.	98/08/21	<i>Y.Kawasaki</i>					(SHEET 2 OF 2)	F		

8

7

6

5

4

3

2

1

554331S34.DGN