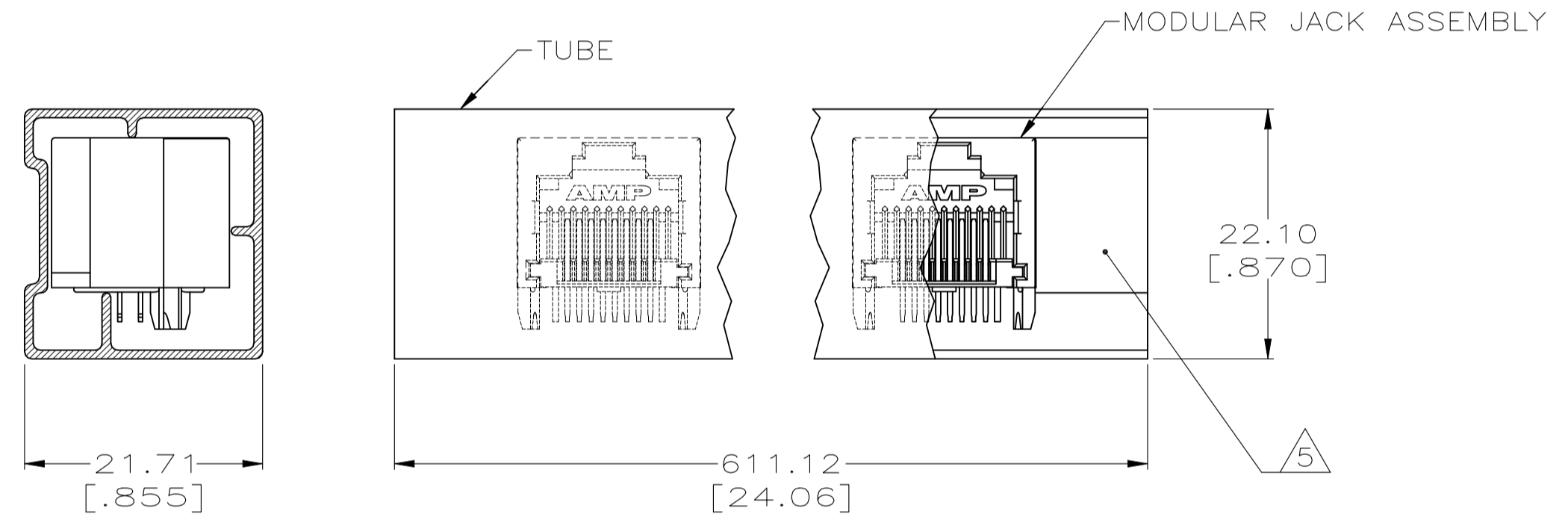
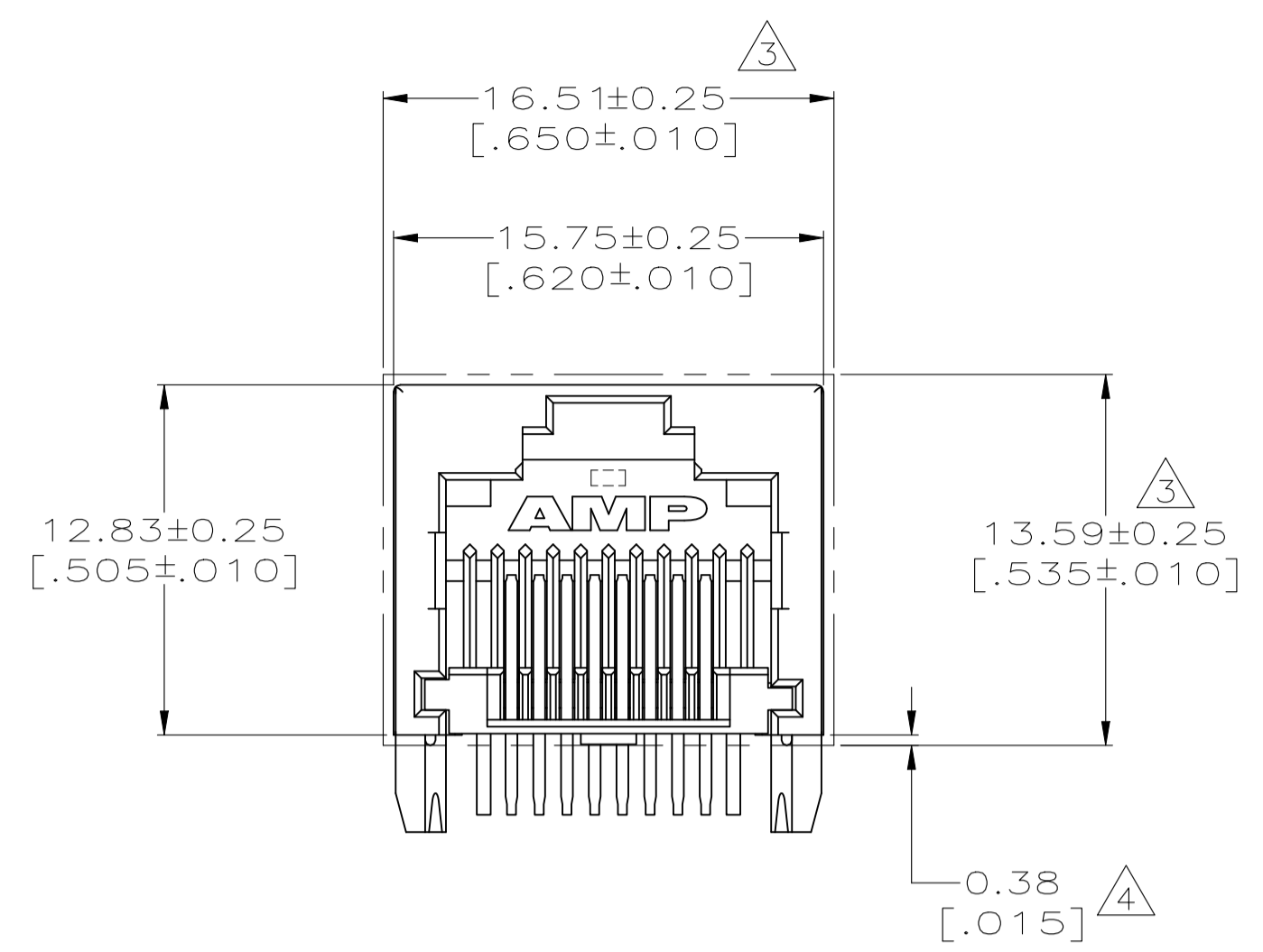
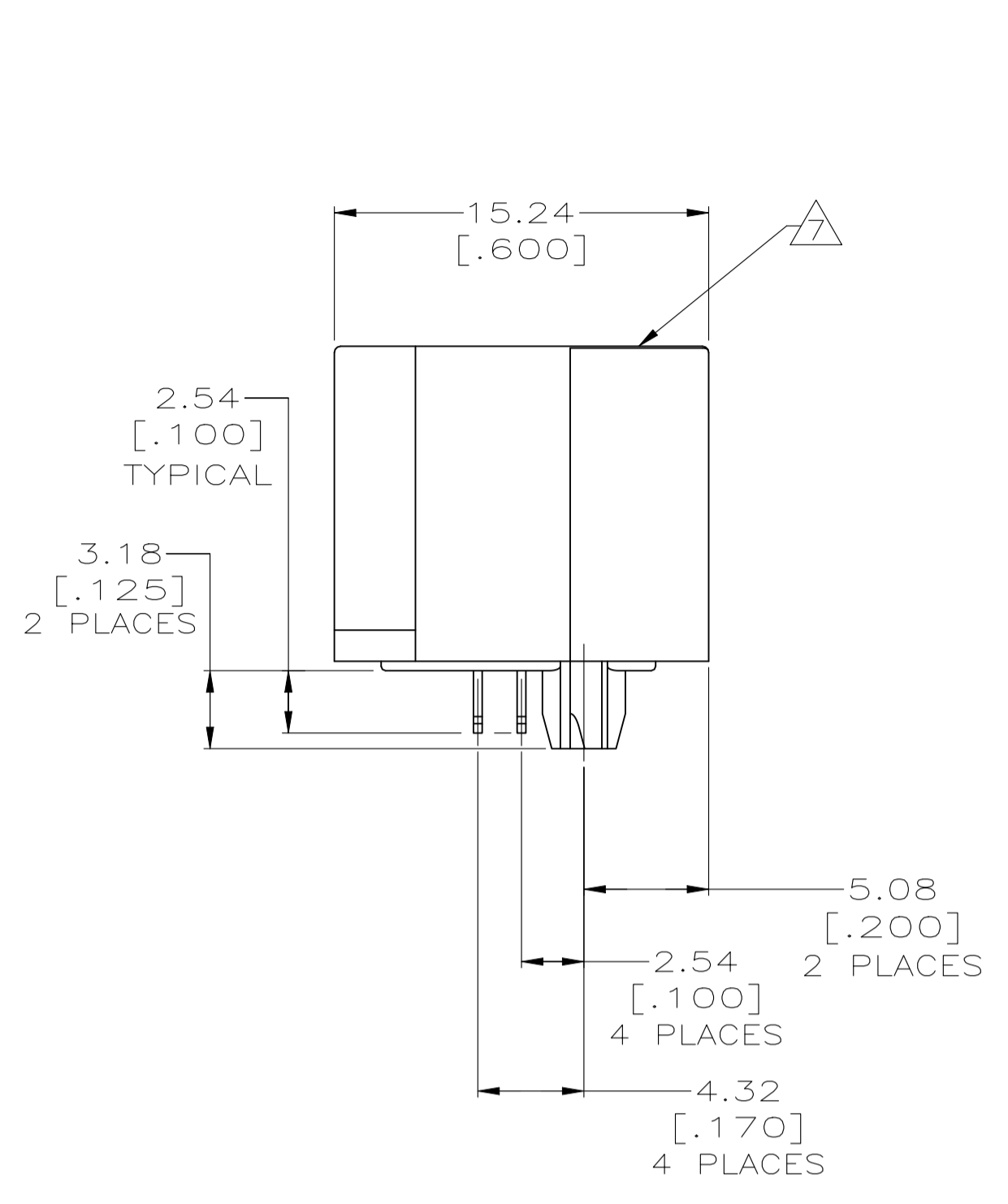
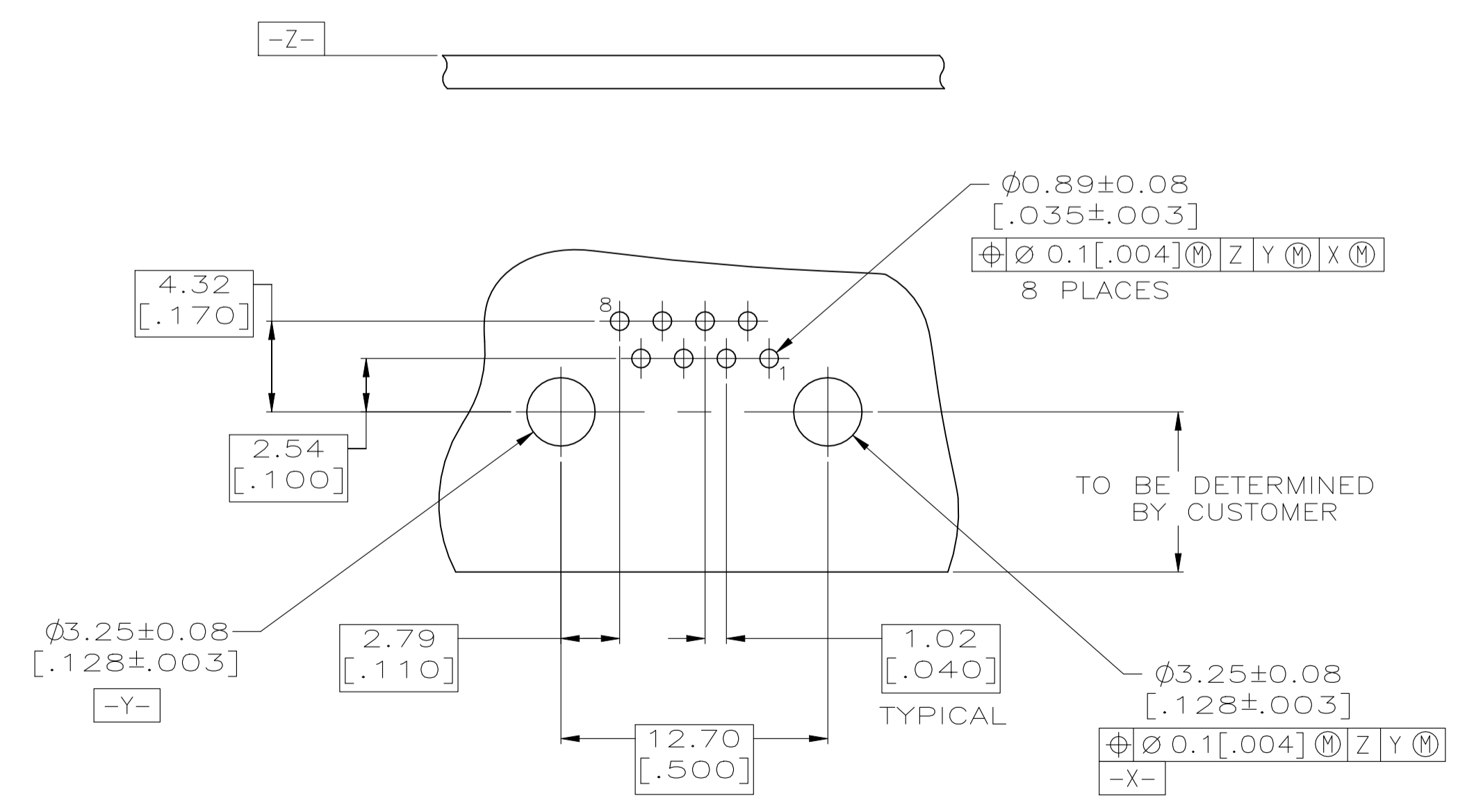


REVISIONS				
P	LTR	DESCRIPTION	DATE	APP'D
G		REVISED PER ECO-20-015830	15SEP2021	AK SZ



DETAIL A
TUBE PACKAGING
SCALE 2:1

- △ MATERIAL:
HOUSING - HIGH TEMPERATURE THERMOPLASTIC, BLACK, UL94V-0; SOLDERING PROCESS COMPATIBLE.
TERMINALS - .36[.014] THICK PHOS BRONZE PLATED WITH 3.81µm[.000150] MINIMUM THICK (SEE P/N TABLE) IN SOLDER AREA. 1.27µm[.000050] MINIMUM GOLD IN LOCALIZED PLATE AREA. ENTIRE TERMINAL PLATED WITH 1.27µm[.000050] MINIMUM THICK NICKEL.
- 2. JACK CAVITY CONFORMS TO FCC RULES AND REGULATIONS PART 68, SUBPART F.
- △ SUGGESTED PANEL OPENING DIMENSIONS.
- △ SUGGESTED CLEARANCE BETWEEN BOTTOM OF CONNECTOR AND BOTTOM PANEL OPENING.
- △ PACKAGED 35 PIECES PER TUBE, SEE DETAIL "A".
- △ 80 PIECES/TRAY, 10 TRAYS/BOX.
- △ MANUFACTURING DATE CODE:
INK STAMP, LOCATED APPROX. AS SHOWN.
FIRST 2 DIGITS = LAST 2 DIGITS OF YEAR.
NEXT 2 DIGITS = MANUFACTURING WORK WEEK.
LAST DIGIT = DAY OF WEEK WITH SUNDAY = 1.



SUGGESTED PRINTED CIRCUIT BOARD LAYOUT
(COMPONENT SIDE)

OBSOLETE	MATTE TIN	△ TUBE	1-406525-3
	MATTE TIN	△ TRAY, PICK & PLACE COMPATIBLE	1-406525-2
	MATTE TIN	TRAY	1-406525-1
OBSOLETE	BRIGHT TIN=LEAD	△ TUBE	406525-3
OBSOLETE	BRIGHT TIN=LEAD	△ TRAY, PICK & PLACE COMPATIBLE	406525-2
OBSOLETE	BRIGHT TIN=LEAD	TRAY	406525-1
	△ TERMINAL PLATING	PACKAGING	PART NUMBER

THIS DRAWING IS A CONTROLLED DOCUMENT.		DIN G. GARRETT 17SEP97	TE Connectivity	
DIMENSIONS: mm [INCHES]		CJK G. GARRETT 17SEP97	NAME INVERTED MODULAR JACK ASSEMBLY, 1X1	
TOLERANCES UNLESS OTHERWISE SPECIFIED:		APVD M. DERSTINE 17SEP97	PRODUCT SPEC 108-1163-4	
0. PLC ± -		APPLICATION SPEC 114-2154		
1. PLC ± -		SIZE A1		
2. PLC ± 0.25[.010]		CAGE CODE 00779		
3. PLC ± 0.13[.005]		DRAWING NO. 406525		
4. PLC ± -		RESTRICTED TO CUSTOMER DRAWING		
ANGLES ± -		SCALE 4:1		
		SHEET 1 of 1		
		REV G		