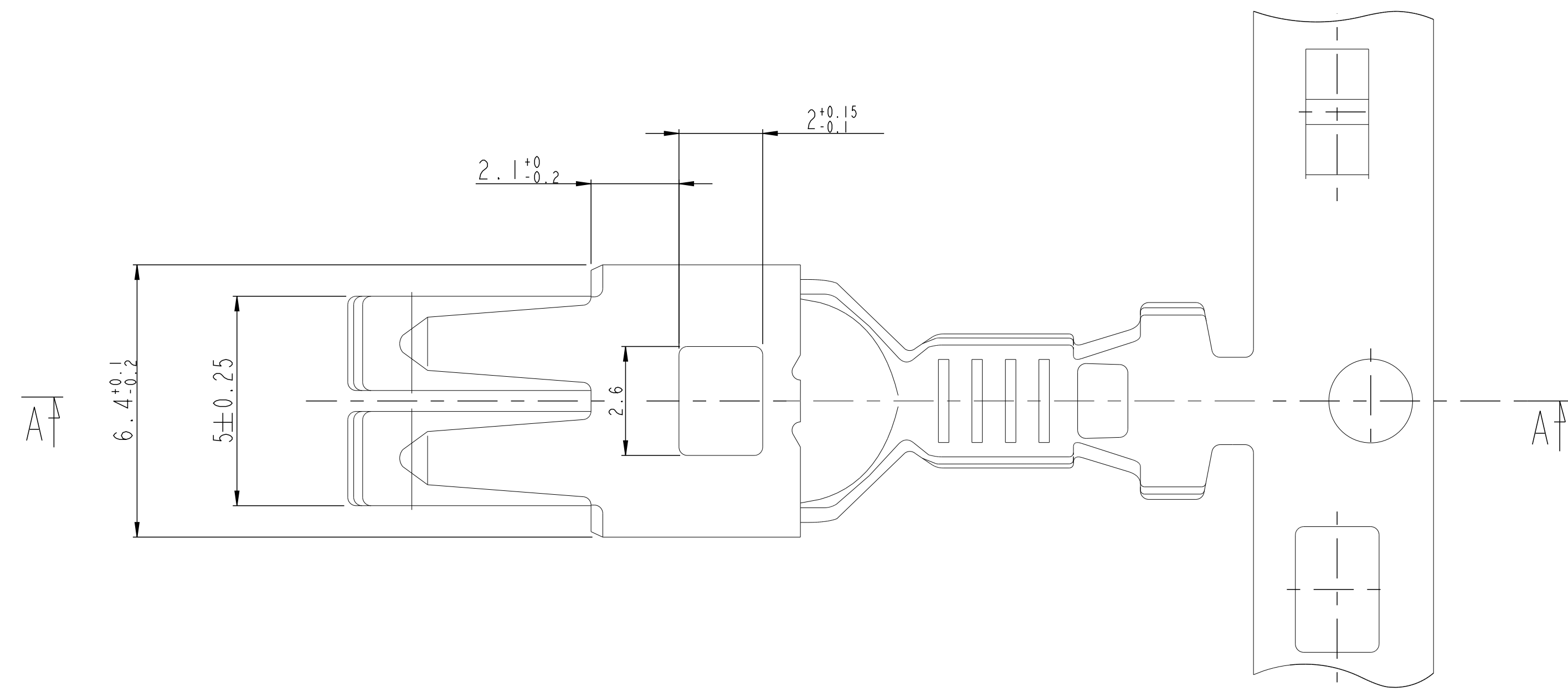
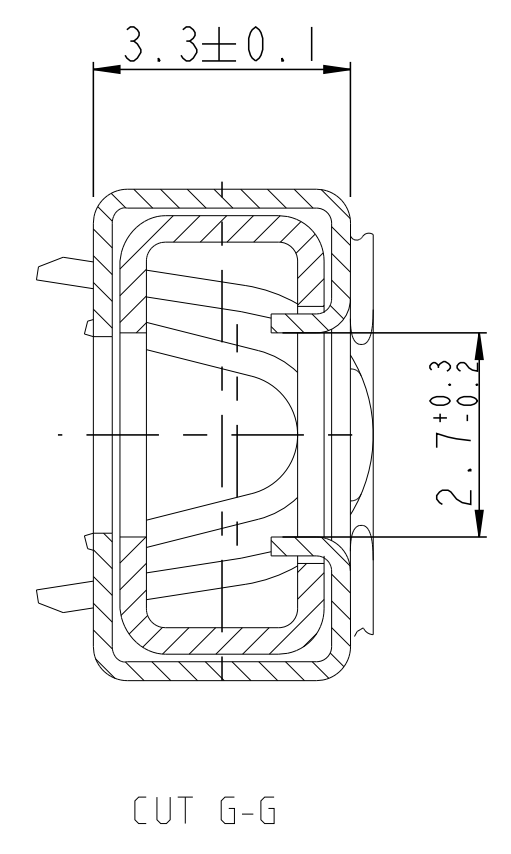
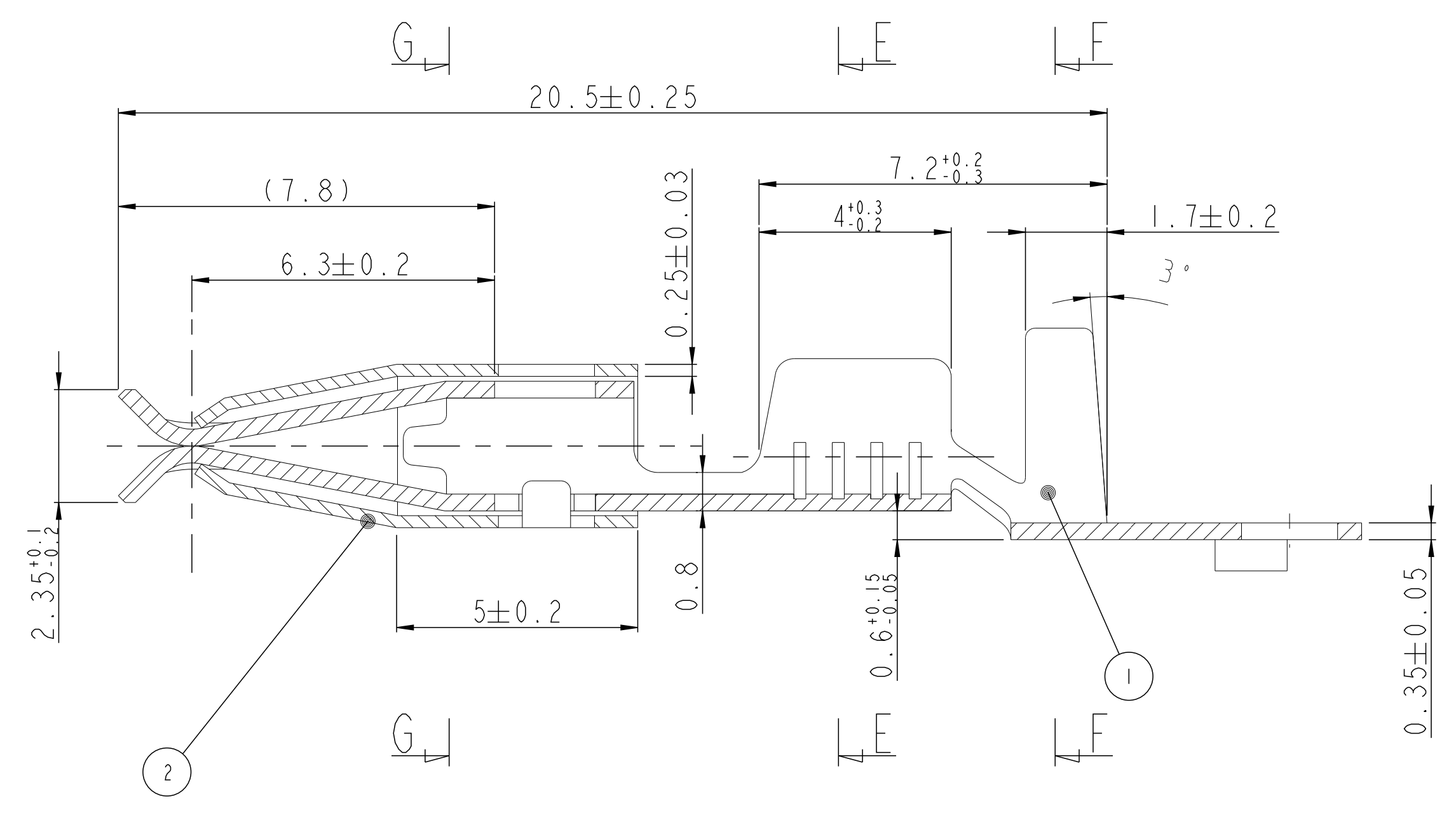
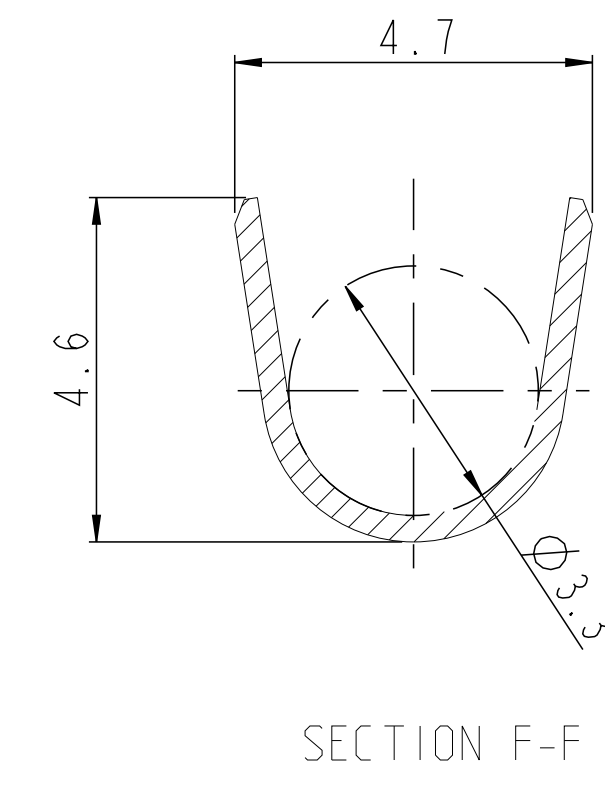
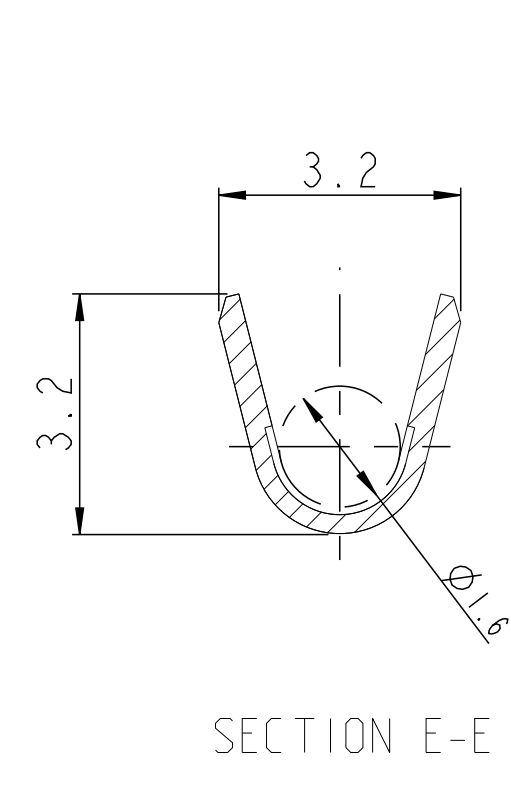


LOC		DIST		REVISIONS			
F	00	REV	DATE	DESCRIPTION	DATE	DWN	APP
		J1	29AUG2012	ECR-12-014426		SH	RH



NOTE:
 * FOR CRIMP DIMENSION INFORMATIONS CONTACT TE CONNECTIVITY ENGINEERING.

963892-1	0.5-1.0mm ²	PLAIN	X12 CrNi18-8	STEEL SPRING	2
		[Sn] 1.5-3 μm	CuSn4	BODY	1
TE PN	WIRE SIZE	FINISH	MATERIAL	COMPONENT	ITEM NO
THIS DRAWING IS A CONTROLLED DOCUMENT. ET PLAN EST UN DOCUMENT CONTROLÉ PAR SES INCORPORÉS. LE DÉSAPPROPRIÉ ET/OU LE MODIFIÉ, CONSTITUE UN MANQUE DE CONFORMITÉ À L'ÉTALETTÉ ET/OU À LA QUALITÉ. DIMENSIONS: TOI-ERANCES UNLESS OTHERWISE SPECIFIED: (SUIVY NO DE DECIMALES) 0 P.L.C./DEC: # 1 P.L.C./DEC: # 2 P.L.C./DEC: #0.2 3 P.L.C./DEC: # 4 P.L.C./DEC: # ANGLES: #45° FINISH: #5° MATERIAL: SEE TABLE FINISH: SEE TABLE		DRW/GESSINE: 17AUG2012 SHREESHAIL CHK/VERIFIE: 17AUG2012 R. KONRAD APV/D APPROUVÉ: 17AUG2012 G. MUMFORD PRODUCT SPEC: - PRODUCT SPEC: - APPLICATION SPEC: - SPEC. APPLICATION: - WEIGHT: - MASSE APPROX.: - CUSTOMER DRAWING	NAME: 6.3MM RECEPTACLE CONTACT SIZE: A1 CAGE CODE: 00779 DRAWING NO: 963892 No. PLAN: - UNIFORMITÉ: - POUR REFERENCE: - SCALE: 1:1 SHEET: 1 OF 1 REV: J1	TE Connectivity	