

# FiberRunner® 2x2 Routing System

# PANDUIT®

SPECIFICATION SHEET

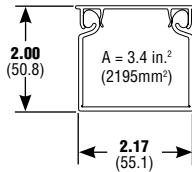
## specifications

The 2x2 routing system shall be a system of channel, fittings, and brackets designed to segregate, route, and protect fiber optic and high performance copper cabling. Channel and fittings shall be assembled using pre-assembled couplers. A selection of spillout options shall be available that easily attach using the vertical tee. Fittings maintain a minimum 2" bend radius to protect against signal loss due to excessive cable bends. Available system colors shall be yellow, orange, and black. A full complement of brackets shall be available for attaching system components to ladder rack, threaded rod, auxiliary framing, strut, equipment racks and raised floor pedestals.



## technical information

Dimensions are in inches  
(Dimensions in parentheses  
are metric).



Open channel 50% fill capacity: (2" pile up)	Cable	No. of Cables
	1.6mm	546
	2.0mm	349
	3.0mm	155
Fiber Optic		
Ribbon Interconnect	5.20mm	52
Category 6	6.35mm	35
Category 6A	7.57mm	24
<b>Material:</b>	Rigid PVC (Channel), ABS (Fittings)	
<b>Flammability:</b>	94V-0	
<b>Approvals:</b>	UL Listed to 2024A Optical Fiber Cable Routing Assemblies Compliant with the applicable tests in Telcordia GR-63-CORE Network Equipment Building Systems Level 3	
<b>CSI spec form:</b>	LP-CSISPEC-FR	

## key features and benefits

<b>Fastest installations</b>	No bolts need to be tightened and no tools are required when installing the QuikLock™ Coupler; QuikLock™ Couplers take less than five seconds to make a mechanically secure connection
<b>Easy to maintain</b>	Hinged channel cover, hinged door vertical tee and solid fitting covers protect cabling and provide fast and easy access for future cabling moves, adds, and changes
<b>System strength</b>	Robust system of channel, covers, fittings and other non-metallic system components protect cable from physical damage; system includes full range of directional and spillout fittings
<b>Versatility</b>	The vertical tee accepts a 3-sided trumpet, transition to corrugated tubing and Panduit® FiberRunner® and Fiber-Duct™ Systems
<b>Cable protection</b>	A minimum 2" bend radius maintained throughout all fittings prevents excessive bends in fiber optic cabling

## applications

The FiberRunner® 2x2 Routing System is a system of channel, fittings, and brackets designed to segregate, route, and protect fiber optic and high performance copper cabling. It is suited for data center applications where cable is routed from distribution areas to equipment cabinets or racks. It is used in Telco Central Offices to route fiber optic jumper cables between fiber distribution frames and equipment bays. It can be deployed over the racks or in approved underfloor applications. Channel and fittings are assembled using timesaving Panduit® QuikLock™ Couplers. A selection of spillout options is available that easily attach using

the vertical tee. Fittings maintain a 2" bend radius to protect against signal loss due to excessive cable bends. Available system colors are yellow, orange, and black to differentiate various types of cabling. A full complement of brackets is available to attach system components to support structures found in all applications.

The FiberRunner® 2x2 Routing System is part of the Panduit complete fiber distribution system, which includes the FiberRunner® 24x4, 12x4, 6x4, and 4x4 Routing Systems, the Fiber-Duct™ 4x4 and 2x2 Routing Systems, cable management, and racks.

### Channel and Cover

2x2 solid hinged channel (6'):	HS2X2**6NM
2x2 slotted hinged channel (6'):	H2X2**6
2x2 hinged cover (6'):	HC2**6
Cable retainer:	WR2H-C

### Fittings and Spillouts

QuikLock™ Coupler:	FBC2X2**
Horizontal right angle:	FRA2X2**
Horizontal tee:	FT2X2**
4-way cross:	FFWC2X2**
End cap:	FHDEC2X2**
Inside vertical 45°:	FIV452X2**
Outside vertical 45°:	FOV452X2**
Inside vertical 90°:	FIV902X2**
Outside vertical 90°:	FOV902X2**
4x4 Fiber-Duct™ to 2x2 reducer:	FRF42**
4x4 FiberRunner® to 2x2 reducer:	FRRF4FD2**
Vertical tee:	FVTHD2X2**
3-sided BRC trumpet spillout:	FTR2X2**
1-port spillout to 1.5" I.D. corrugated tubing:	FIDT2X2**
2x2 hinged duct vertical cable manager kit:	FRHD2KT**
Hinged channel 1" bend radius control trumpet:	TRC2HDBL

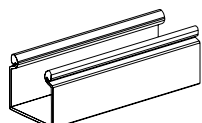
### Mounting Brackets

Existing 1/2" thr rod brkt:	FTRBE12
Existing 5/8" thr rod brkt:	FTRBE58
New 1/2" thr rod brkt:	FTRBN12
New 5/8" thr rod brkt:	FTRBN58
Underfloor brkt:	FUSB
Ladder rack brkt:	FLRB
"L" wall mount brkt:	FLB
Adjustable "Z" bracket:	FZBA1.5X4
Low profile "Z" bracket:	FZBLP
Two-piece ladder rack brkt 1/2" thr rod:	F2PCLB12
Two-piece ladder rack brkt 5/8" thr rod:	F2PCLB58
Two-piece framing clip 5/8" thr rod to 9/16" C-channel aux. framing bars:	FRAF58

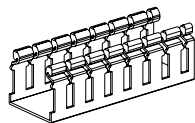
\*\*Substitute: YL = Yellow, OR = Orange, BL = Black

# FiberRunner® 2x2 Routing System

## channel and cover



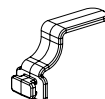
HS2X2\*\*6NM



H2X2\*\*6

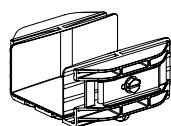


HC2\*\*6

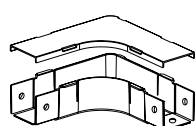


WR2H-C

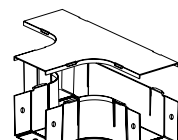
## fittings, split covers, and spillouts



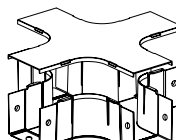
FBC2X2\*\*



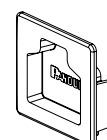
FRA2X2\*\*



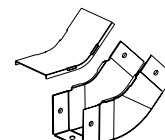
FT2X2\*\*



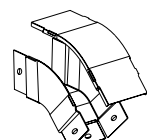
FFWC2X2\*\*



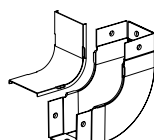
FHDEC2X2\*\*



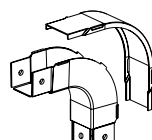
FIV452X2\*\*



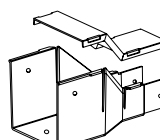
FOV452X2\*\*



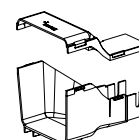
FIVRA2X2\*\*



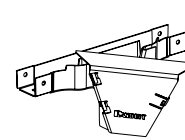
FOVRA2X2\*\*



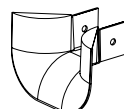
FRF42\*\*



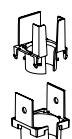
FRRF4FD2\*\*



FVTHD2X2\*\*



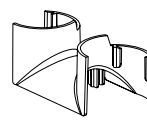
FTR2X2\*\*



FIDT2X2\*\*

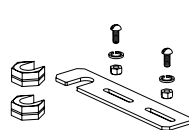


FRHD2KT\*\*

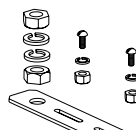


TRC2HDBL

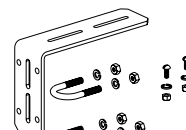
## QuikLock™ Mounting Brackets



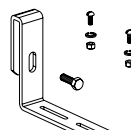
FTRBE12  
FTRBE58



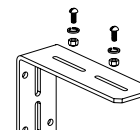
FTRBN12  
FTRBN58



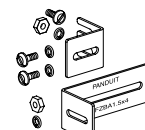
FUSB



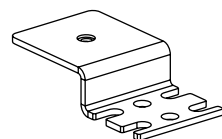
FLRB



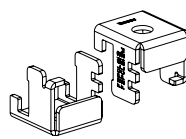
FLB



FZBA1.5X4



FZBLP



F2PCLB12  
F2PCLB58



FRAF58

\*\*Substitute: YL = Yellow, OR = Orange, BL = Black

### WORLDWIDE SUBSIDIARIES AND SALES OFFICES

PANDUIT CANADA  
Markham, Ontario  
cs-cdn@panduit.com  
Phone: 800.777.3300

PANDUIT EUROPE LTD.  
London, UK  
cs-emea@panduit.com  
Phone: 44.20.8601.7200

PANDUIT SINGAPORE PTE. LTD.  
Republic of Singapore  
cs-ap@panduit.com  
Phone: 65.6305.7575

PANDUIT JAPAN  
Tokyo, Japan  
cs-japan@panduit.com  
Phone: 81.3.6863.6000

PANDUIT LATIN AMERICA  
Guadalajara, Mexico  
cs-la@panduit.com  
Phone: 52.33.3777.6000

PANDUIT AUSTRALIA PTY. LTD.  
Victoria, Australia  
cs-aus@panduit.com  
Phone: 61.3.9794.9020

For a copy of Panduit product warranties, log on to [www.panduit.com/warranty](http://www.panduit.com/warranty)

For more information

Visit us at [www.panduit.com](http://www.panduit.com)

Contact Customer Service by email: [cs@panduit.com](mailto:cs@panduit.com)  
or by phone: 800.777.3300

**PANDUIT®**

©2014 Panduit Corp.  
ALL RIGHTS RESERVED.  
FRSP19--WW-ENG  
Replaces WW-FRSP06  
11/2014