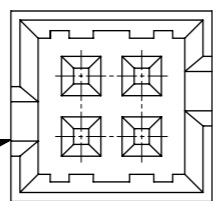


RECOMMENDED PCB PATTERN

4 CKT:
BOTH SIDE WITH POLARIZATION SLOT
6 CKT & ABV:
ONLY 1 SIDE WITH POLARIZATION SLOT



4 CKT TOP VIEW

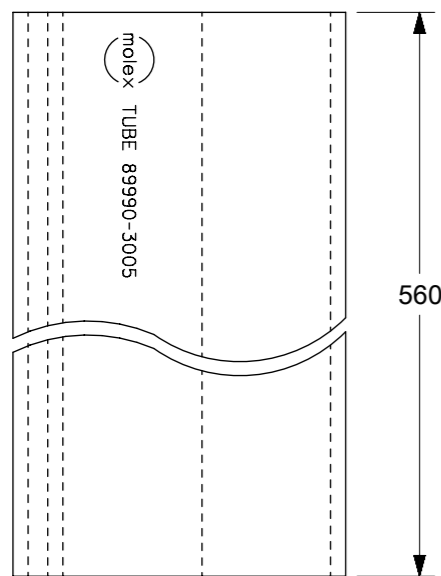
| PEG OPTION | P/N WITH CAP IN TAPE & REEL | | P/N WITH CAP IN TUBE | | CKT SIZE | DIMENSION | | | |
|------------|-----------------------------|------------|----------------------|------------|----------|-----------|-------|-------|-------|
| | 15µin Gold | 30µin Gold | 15µin Gold | 30µin Gold | | A | B | C | D |
| NO | 87832-0440 | 87832-0442 | 87832-0441 | 87832-0443 | 4 | 2.00 | 4.85 | 6.65 | 5.00 |
| YES | 87832-0640 | 87832-0642 | 87832-0641 | 87832-0643 | 6 | 4.00 | 6.85 | 8.65 | 7.00 |
| YES | 87832-0840 | 87832-0842 | 87832-0841 | 87832-0843 | 8 | 6.00 | 8.85 | 10.65 | 9.00 |
| YES | 87832-1040 | 87832-1042 | 87832-1041 | 87832-1043 | 10 | 8.00 | 10.85 | 12.65 | 11.00 |
| YES | 87832-1240 | 87832-1242 | 87832-1241 | 87832-1243 | 12 | 10.00 | 12.85 | 14.65 | 13.00 |
| NO | --- | 87832-5242 | --- | 87832-5243 | | | | | |

NOTES:

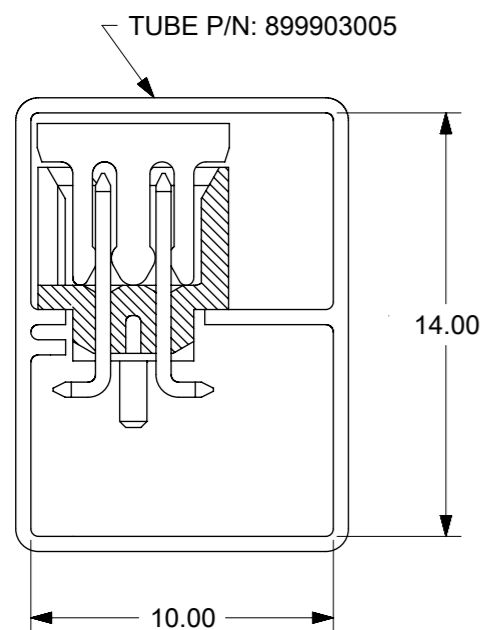
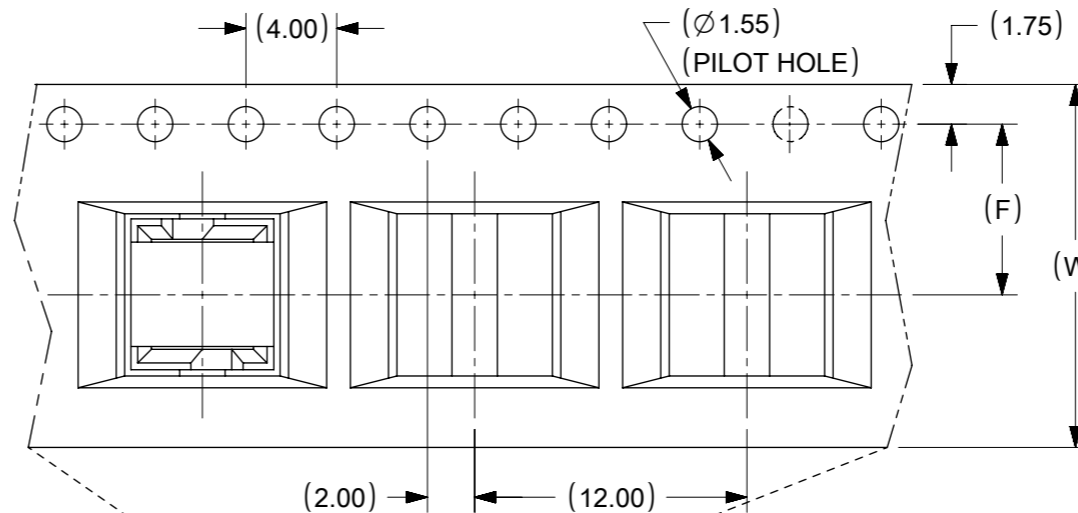
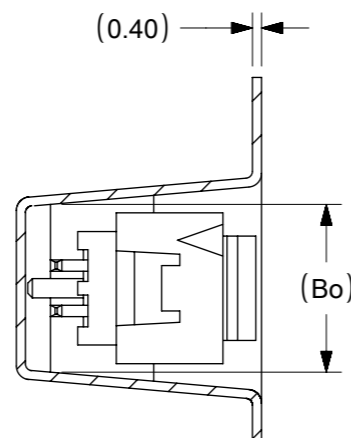
- FOR ILLUSTRATION PURPOSES, 8 CIRCUIT SIZE WAFER IS SHOWN.
- MATERIAL :
HOUSING & CAP : 30% G.F., NYLON 46, UL94V-0, COLOR BLACK.
PIN : 0.50mm SQ. PHOSPHOR BRONZE.
- PLATING :
40, 41 - 0.38µm/15µin GOLD IN CONTACT AREA AND 1.88µm/75µin MIN. TIN IN SOLDER TAIL AREA OVER 1.27µm/50µin MIN. NICKEL OVERALL.
42, 43 - 0.76µm/30µin GOLD IN CONTACT AREA AND 1.88µm/75µin MIN. TIN IN SOLDER TAIL AREA OVER 1.27µm/50µin MIN. NICKEL OVERALL.
- PIN PUSHOUT FORCE : 0.91kg MIN. IN EITHER DIRECTION.
- PRODUCT SPECIFICATION PS-87831-027 APPLIES.
- COPLANARITY IS TO BE MEASURED BY RESTING THE SOLDER TAIL ON A GAUGE SURFACE.
- CAP TO BE POSITION IN THE CENTER OF HEADER FOR PICK AND PLACE.
- CKT 4 & 6 HAS NO IDENTIFICATION TAG.
- THIS HEADER MATES WITH MOLEX:
a) CRIMP RECEPTACLE HOUSING, 51110 SERIES WITH CRIMP TERMINAL, 50394 SERIES.
b) 2mm MILLIGRID DUAL ROW IDT, 87568 SERIES.
- PARTS SHALL BE PACKED IN MOISTURE BAG WITH DESICCANT GEL.
- NO CENTRE POLARIZATION SLOT FOR CKT SIZE 4 AND 6.

| | | | | | | | | | |
|---------|---|-------|-----------------------------------|---|--|---|--|--|--|
| SYMBOLS | THIS DRAWING CONTAINS INFORMATION THAT IS PROPRIETARY TO MOLEX ELECTRONIC TECHNOLOGIES, LLC AND SHOULD NOT BE USED WITHOUT WRITTEN PERMISSION | | CURRENT REV DESC: ADDED BTB DIST. | | | | | | |
| | DIMENSION UNITS | SCALE | | | | | | | |
| ▽ = 0 | MM | 1:1 | | | MGRID, SHROUDED HEADER W/PEG/CAP/LOCK FEATURES SMT, IN TUBE AND T&R | | | | |
| ▽ = 0 | GENERAL TOLERANCES (UNLESS SPECIFIED) | | | | | | | | |
| ▽ = 0 | | MM | INCH | | | PRODUCT CUSTOMER DRAWING | | | |
| ▽ = 0 | 4 PLACES | ± | ± | | | | | | |
| ▽ = 0 | 3 PLACES | ± | ± | | | DOCUMENT NUMBER: SD-87832-013 DOC TYPE: PSD DOC PART: 001 REVISION: A9 | | | |
| ▽ = 0 | 2 PLACES | ± | 0.15 | ± | | | | | |
| ▽ = 0 | 1 PLACE | ± | ± | | | MATERIAL NUMBER: SEE TABLE CUSTOMER: GENERAL MARKET SHEET NUMBER: 1 OF 3 | | | |
| ▽ = 0 | 0 PLACES | ± | ± | | | | | | |
| ▽ = 0 | ANGULAR TOL | ± | 3.0° | | | | | | |
| ▽ = 0 | DRAFT WHERE APPLICABLE MUST REMAIN WITHIN DIMENSIONS | | THIRD ANGLE PROJECTION | | DRAWING | SERIES | | | |
| ▽ = 0 | | | | | A3-SIZE | 87832 | | | |

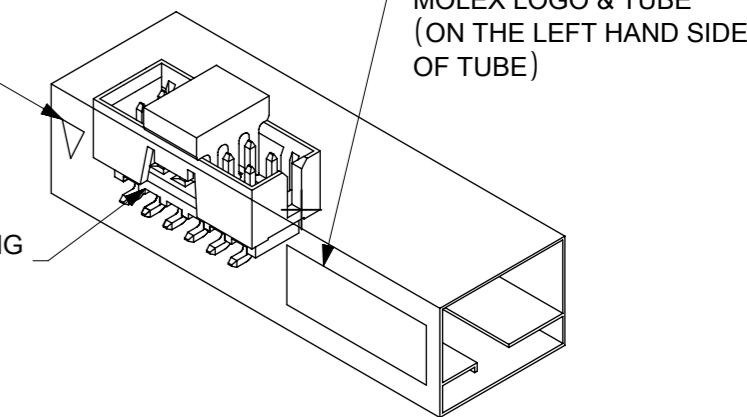
WITH CAP IN TUBE PACKAGING



PART IN T&R FOR ILLUSTRATION PURPOSE ONLY



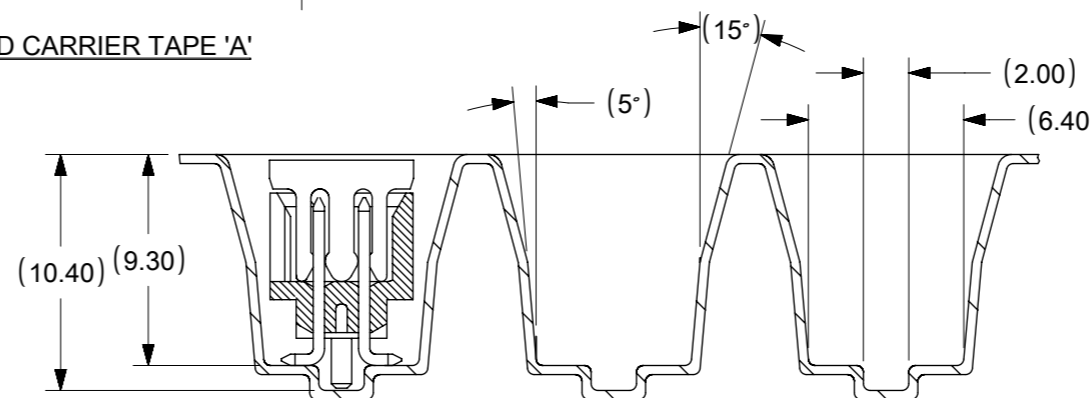
RED ARROW INDICATION



CUSTOMER PULL OUT DIRECTION

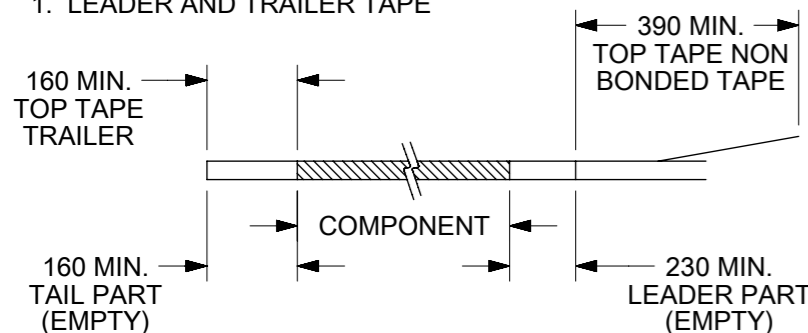
REF : ORIENTATION OF PART IN TUBE. (FOR THE REFERENCE OF PART/TUBE ASSEMBLY.)

EMBOSSED CARRIER TAPE 'A'

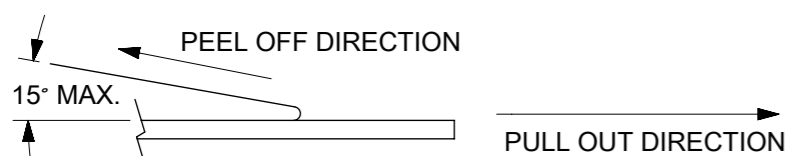


NOTES:

1. LEADER AND TRAILER TAPE



2. PEELING OFF FORCE OF THE TOP TAPE: 20-80gf. (PEELING DIRECTION AS SHOWN IN FOLLOWING FIGURE)



3. PACKAGING STANDARD IS AS PER EIA-481.

| PART NUMBER WITH CAP IN TAPE/REEL | | CKT SIZE | EMBROSS TAPE PART NUMBER | TOP TAPE NUMBER | REEL NUMBER | (F) | (Bo) | (So) | (W) |
|-----------------------------------|------------|----------|--------------------------|-----------------|-------------|-------|-------|-------|-------|
| 87832-0440 | 87832-0442 | 4 | 89990-7601 | 89990-5602 | 89990-5709 | 7.50 | 7.15 | - | 16.00 |
| 87832-0640 | 87832-0642 | 6 | 89990-7752 | 89990-5603 | 89990-5710 | 11.50 | 9.15 | - | 24.00 |
| 87832-0840 | 87832-0842 | 8 | 89990-7753 | 89990-5603 | 89990-5710 | 11.50 | 11.05 | - | 24.00 |
| 87832-1040 | 87832-1042 | 10 | 89990-7754 | 89990-5603 | 89990-5710 | 11.50 | 13.05 | - | 24.00 |
| 87832-1240 | 87832-1242 | 12 | 89990-7755 | 89990-5604 | 89990-5711 | 14.20 | 15.15 | 28.40 | 32.00 |
| --- | 87832-5242 | | | | | | | | |

| | | | | | | | | | |
|---|--|--|--|------------------------|--|---|--|-----------------|--|
| THIS DRAWING CONTAINS INFORMATION THAT IS PROPRIETARY TO MOLEX ELECTRONIC TECHNOLOGIES, LLC AND SHOULD NOT BE USED WITHOUT WRITTEN PERMISSION | | | | | | | | | |
| SYMBOLS | | DIMENSION UNITS | | SCALE | | CURRENT REV DESC: ADDED BTB DIST. | | | |
| ▽ = 0 | | MM | | 1:1 | | molex MGRID, SHROUDED HEADER W/PEG/CAP/LOCK FEATURES SMT, IN TUBE AND T&R PRODUCT CUSTOMER DRAWING EC NO: 619055 DRWN: HK02 2019/05/21 CHK'D: NMANE02 2019/07/09 APPR: MRAMAKRISHNA 2019/07/09 INITIAL REVISION: DRWN: ATSEE 2004/07/29 APPR: SKTOH 2004/08/05 | | | |
| ▽ = 0 | | GENERAL TOLERANCES (UNLESS SPECIFIED) | | | | | | | |
| ▽ = 0 | | MM | | INCH | | | | | |
| ▽ = 0 | | 4 PLACES ± | | ± | | | | | |
| ▽ = 0 | | 3 PLACES ± | | ± | | | | | |
| ▽ = 0 | | 2 PLACES ± | | 0.15 ± | | | | | |
| ▽ = 0 | | 1 PLACE ± | | ± | | | | | |
| ▽ = 0 | | 0 PLACES ± | | ± | | | | | |
| ▽ = 0 | | ANGULAR TOL ± | | 3.0° | | | | | |
| ▽ = 0 | | DRAFT WHERE APPLICABLE MUST REMAIN WITHIN DIMENSIONS | | THIRD ANGLE PROJECTION | | DRAWING | | SERIES | |
| ▽ = 0 | | | | A3-SIZE | | 87832 | | MATERIAL NUMBER | |
| ▽ = 0 | | | | SEE TABLE | | CUSTOMER | | GENERAL MARKET | |
| ▽ = 0 | | | | 2 OF 3 | | | | | |

| | | | | |
|-----------------|----|--------------|------------|----------|
| DOCUMENT STATUS | P1 | RELEASE DATE | 2019/07/09 | 06:47:56 |
|-----------------|----|--------------|------------|----------|

BOARD TO BOARD (BTB) DISTANCE

| HEADER | MATES WITH (RECEPTACLE) | BTB DIST. | PICTORIAL VIEW |
|--------|-------------------------|-----------|----------------|
| 87832 | 79107 | 8.14 | |
| | 78787 | 8.14 | |
| | 79108 | 8.14 | |
| | 79109 | 8.35 | |
| | 78788 | 8.35 | |

| | | | |
|---|--|--|--|
| SYMBOLS ▽ = 0 ▽ = 0 ▽ = 0 ▽ = 0 ▽ = 0 ▽ = 0 ▽ = 0 ▽ = 0 ▽ = 0 | THIS DRAWING CONTAINS INFORMATION THAT IS PROPRIETARY TO MOLEX ELECTRONIC TECHNOLOGIES, LLC AND SHOULD NOT BE USED WITHOUT WRITTEN PERMISSION DIMENSION UNITS: mm SCALE: 1:1 CURRENT REV DESC: ADDED BTB DIST. | molex MGRID, SHROUDED HEADER W/PEG/CAP/LOCK FEATURES SMT, IN TUBE AND T&R | |
| | GENERAL TOLERANCES (UNLESS SPECIFIED) 4 PLACES ± ± 3 PLACES ± ± 2 PLACES ± 0.15 ± 1 PLACE ± ± 0 PLACES ± ± ANGULAR TOL ± 3.0° | | EC NO: 619055 DRWN: HK02 2019/05/21 CHK'D: NMANE02 2019/07/09 APPR: MRAMAKRISHNA 2019/07/09 |
| | DRAFT WHERE APPLICABLE MUST REMAIN WITHIN DIMENSIONS THIRD ANGLE PROJECTION DRAWING: A3-SIZE SERIES: 87832 MATERIAL NUMBER: CUSTOMER: GENERAL MARKET SHEET NUMBER: 3 OF 3 | INITIAL REVISION: DRWN: DRWN BY XXXX/XX/XX APPR: APPR BY XXXX/XX/XX | PRODUCT CUSTOMER DRAWING DOCUMENT NUMBER: SD-87832-013 DOC TYPE: PSD DOC PART: 001 REVISION: A9 |