

TPS65252 High Current, Synchronous Step Down Two Buck Switcher Evaluation Module

User's Guide



Literature Number: SLVU438

January 2011

1	Introduction	5
2	Background	5
3	Schematic	5
4	Placement	7
5	Bench Test Setup Conditions	10
	5.1 Headers Description and Jumper Placement	10
	5.2 Jumpers	11
	5.3 Test Points and Placement	11
6	Power-Up Procedure	12
7	Bill of Materials	12

List of Figures

1	TPS65252 Schematic	6
2	Top Layer	7
3	Layer 1	8
4	Layer 2	8
5	Layer 3	9
6	Layer 4	9
7	Headers Description and Jumper Placement.....	10

List of Tables

1	Input Voltage and Output Current Summary	5
2	Jumpers.....	11
3	Test Points and Placement.....	11
4	Bill of Materials	12

1 Introduction

This document presents the information required to power the TPS65252 PMIC as well as the support documentation including schematic and bill of materials.

2 Background

The TPS65252 PMIC is designed to provide 3-A and 2-A continuous outputs with an operational range of 4.5 V to 18 V and a externally set switching frequency ranging from 300 kHz to 2.2 MHz. When the PMIC is not fully loaded, buck1 can be loaded to 3.5 A and buck 2 to 2.5 A. It also features a power distribution switch with selectable current limit.

As there are many possible options to set the converters, [Table 1](#) presents the performance specification summary for the EVM.

Table 1. Input Voltage and Output Current Summary

EVM	TEST CONDITIONS	OUTPUT CURRENT RANGE
TPS65252EVM	$V_{IN} = 4.5 \text{ V to } 16 \text{ V}$ $f_{sw} = 500 \text{ kHz}$	Buck1, 1.2 V, 3 A Buck2, 1.8 V, 2 A (25°C ambient)

This evaluation module is designed to provide access to the features of the TPS65252. Some modifications can be made to this module to test performance at different input and output voltages, current and frequency operation. Please contact TI Field Applications Group for advice on these matters.

3 Schematic

See next page.

The resistor and capacitor values have been chosen according to the guidelines presented on the TPS65252 spec available at <http://focus.ti.com/docs/prod/folders/print/TPS65252.html>.

Note that for the purpose of gains-phase measurements R9 and R11 (0 Ω on the EVM) need to be replaced by suitable low value resistors as per the network analyzer setup required. Test points are provided on either end of the resistors to allow for easy measurement.

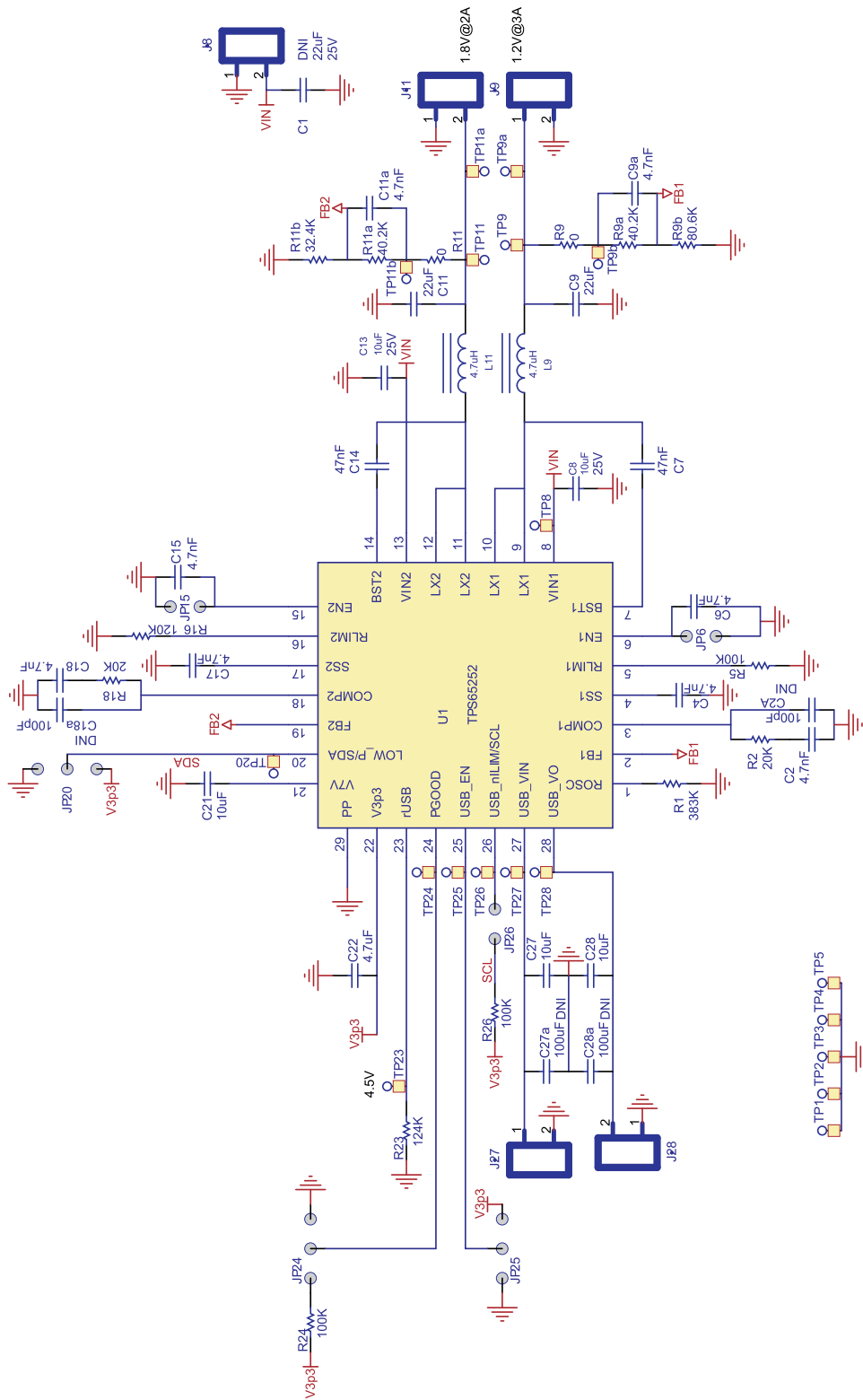


Figure 1. TPS65252 Schematic

4 Placement

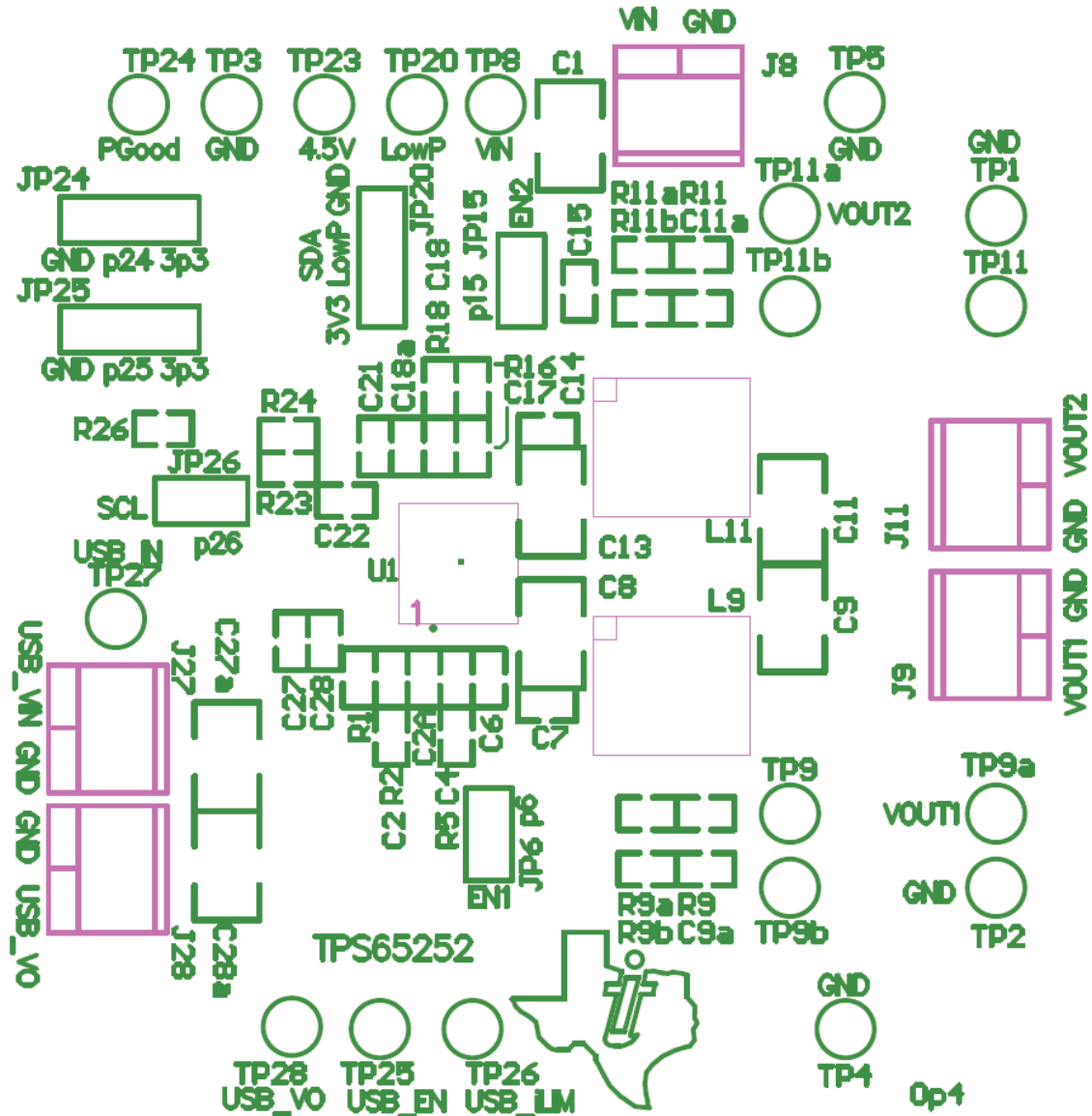


Figure 2. Top Layer

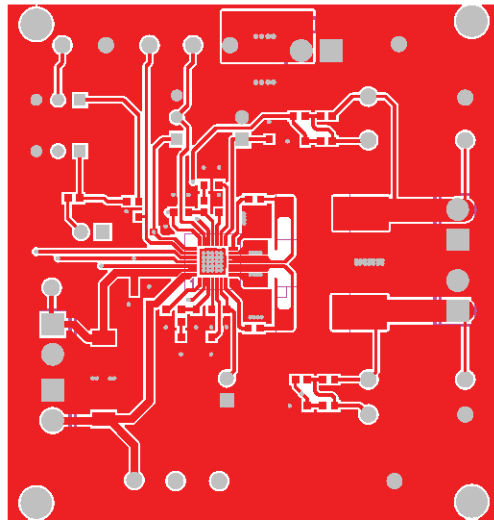


Figure 3. Layer 1

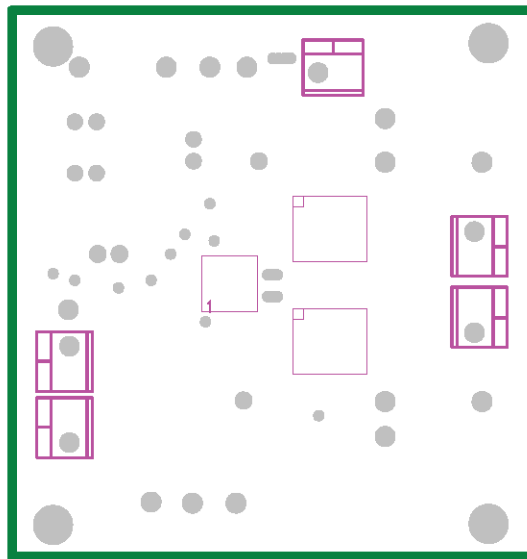


Figure 4. Layer 2

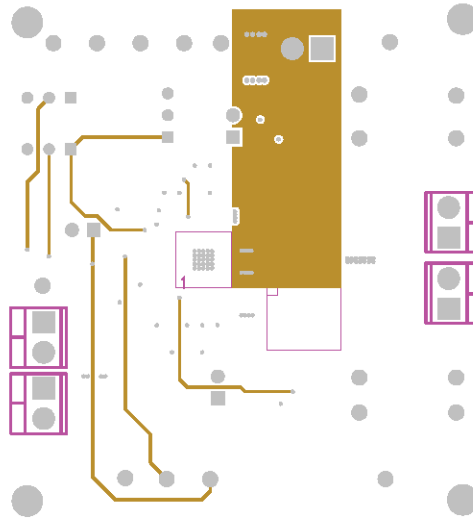


Figure 5. Layer 3

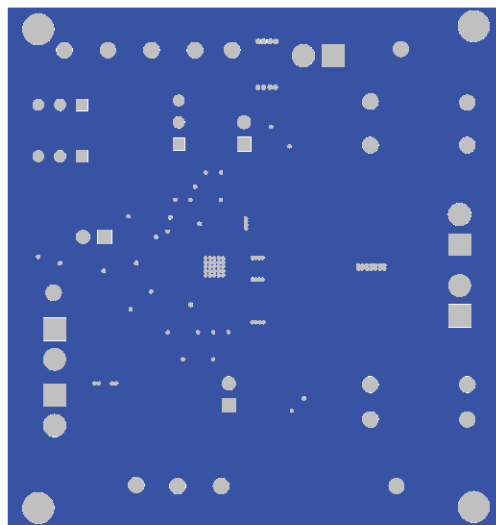


Figure 6. Layer 4

5 Bench Test Setup Conditions

5.1 Headers Description and Jumper Placement

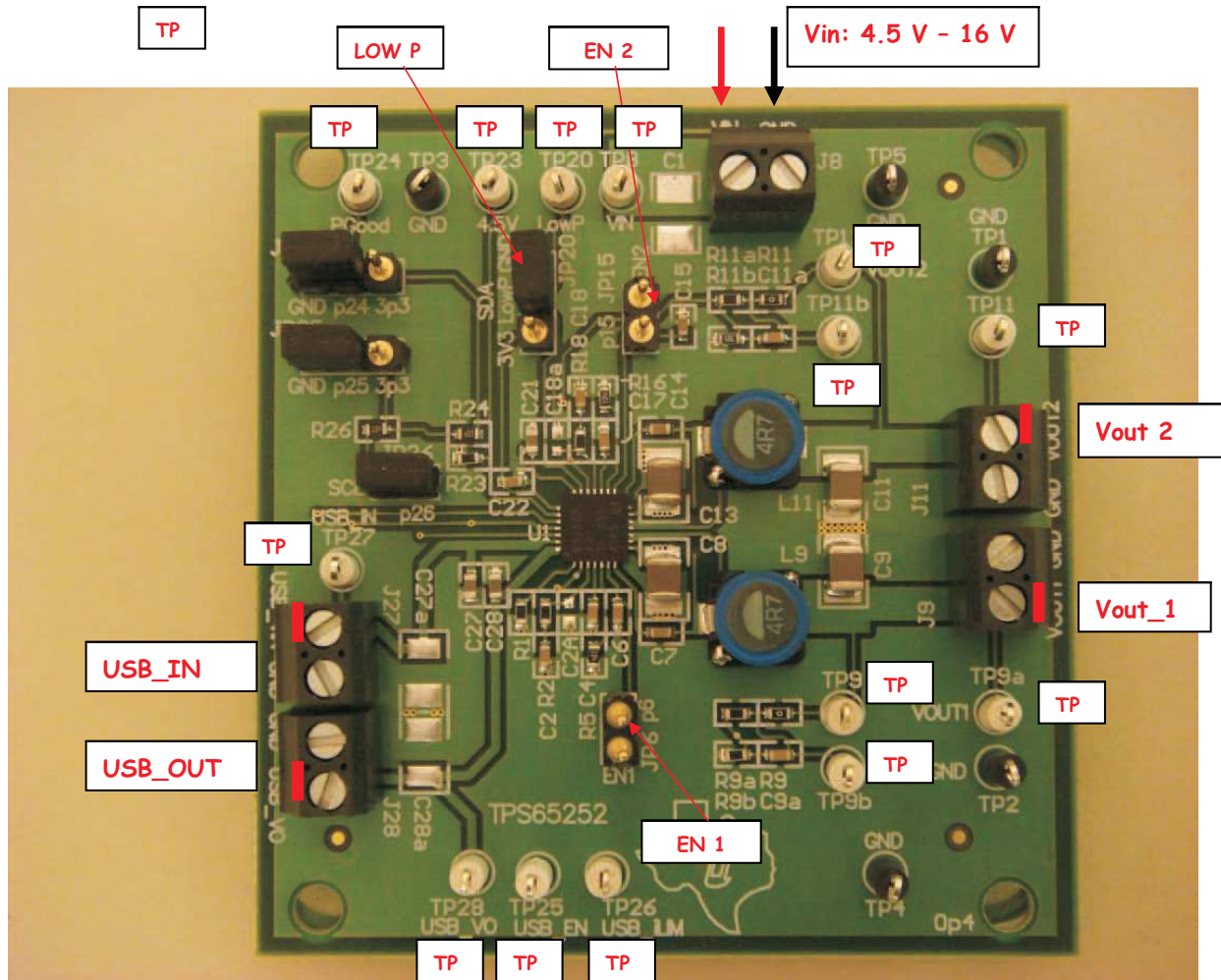


Figure 7. Headers Description and Jumper Placement

Test points:

Black – GND

White – Each output, feed-back, power good and V_{IN} . All marking on PCB.

5.2 Jumpers

Table 2. Jumpers

JUMPER NO.	FUNCTION	PLACEMENT	COMMENT
JP15	BUCK1 enable (EN1)	For sequencing do not fit jumper. To disable converter fit jumper to GND.	Fit according to test requirement
JP6	BUCK2 enable (EN2)	For sequencing do not fit jumper. To disable converter fit jumper to GND.	Fit according to test requirement
JP20	LOW_P	Low power: Power save mode ON/OFF. If need low power mode test, should connect V3V.	Fit according to test requirement. During normal operation jumper must be fitted.
JP24	PGOOD	Pulls PGOOD signal to internal 3V3 rail or grounds pin	Fit according to test requirement
JP25	USB_EN	Enables power switch when tied to 3v3. Disables power switch when tied to GND.	Fit according to test requirement
JP26	USB_nILIM	When fitted connects USB switch alarm to internal 3V3 rail	Fit according to test requirement

5.3 Test Points and Placement

Buck converter outputs are white and have a label for easy location. Close to any of these test points there are black ground test points to allow for DVM measurement or to use a metal exposed scope probe to reduce common mode noise measurements. All test points are described in [Table 3](#).

Table 3. Test Points and Placement

TEST POINT	NAME	SIGNAL	COLOR	COMMENT
TP1, TPS, TP3, TP4, TP5	GND	Ground	Black	
TP8	VIN	Input supply	White	
TP9, TP9A	VOUT1	Buck1 output	White	
TP9B		Input for gain-phase measurement Buck1	White	Normally not used
TP11, TP11A	VOUT2	Buck2 output	White	
TP11B		Input for gain-phase measurement Buck2	White	Normally not used
TP20	LowP	Low Power input	White	
TP23	rUSB	USB switch current set pin	White	
TP24	PGOOD	Power Good (open drain connected to Buck1 output)	White	
TP25	USB_EN	Enable pin for USB switch	White	
TP26	USB_nILIM	USB switch alarm pin	White	
TP27	USB_VIN	USB switch input	White	
TP28	USB_Vo	USB switch output	White	

6 Power-Up Procedure

1. Define which converters are to be enabled or disabled by connecting the correct jumpers accordingly.
2. Apply a DC voltage to jumper J8. Polarity is clearly marked on the silk-screen.
3. Verify that the relevant converters are powered up by the output voltages. The whole start-up process will take less than 100 ms. PGOOD will be asserted after 256 ms.
4. Apply loads to the output connectors.
5. To power the USB switch apply a suitable voltage to jumper 27 and enable the switch by connecting JP25 to 3V3 or leave it open.

7 Bill of Materials

Table 4. Bill of Materials

ITEM	QUANTITY	DESIGNATOR	VALUE	FOOTPRINT	MANUFACTURER	MANUFACTURER PART NO.	VENDER PART NO.	DESCRIPTION
1	2	DNI: C2A, C18a	Do not install 100 pF	603	Panasonic-ECG	ECJ-1VC1H101J	PCC101ACVDKR-ND	CAP CERAMIC 100 pF 50 V 0603 SMD
2	2	C7, C14	47 nF	603	Panasonic-ECG	ECJ-1VB1E473K	PCC1771DKR-ND	CAP 47000 pF 25 V CERM X7R 0603
3	2	C8, C13	10 µF	1210	Murata Electroics North America	GRM32ER7YA1 06KA12L	490-5314-6-ND	CAP CER 10 µF 35 V X7R 10% 1210
4	2	C9, C11	22 µF	1210	Panasonic-ECG	ECJ-4YB1E226M	PCC2333DKR-ND	CAP CERAMIC 22 µF 25 V X5R 1210
5	3	C21, C27, C28	10 µF	603	Panasonic-ECG	ECJ-1VB1A106M	PCC2479DKR-ND	CAP CERAMIC 10 µF 10 V 0603 X5R
6	1	C22	4.7 µF	603	Panasonic-ECG	ECJ-1VB0J475M	PCC2318DKR-ND	CAP CERAMIC 4.7 µF 6.3 V X5R 0603
7	2	DNI: C27A, C28A	Do not purchase item		Do not purchase item		Do not purchase item	Do not purchase item
8	5	J8, J9, J11, J27, J28	ED555/ 2DS	TB_2X3.5MM	On Shore Technology	ED555/2DS	ED1514-ND	TERMINAL BLOCK 3.5 mm 2POS PCB
9	3	JP6, JP15, JP26		JMP0.2	Mil-Max	800-10-064-10-001000	ED7264-ND	SIP HEADER 64 POS STRAIGHT PCB
10	3	JP20, JP24, JP25		JMP0.3	Mil-Max	800-10-064-10-001000	ED7264-ND	SIP HEADER 64 POS STRAIGHT PCB
11	2	L9, L11	4.7 µH	IND_SLF7055	TDK Corporation	SLF7055T- 4R7N3R1-3PF	445-4563-2-ND	Magnetic-Core Inductor
12	1	R1	383 kΩ	603	Panasonic-ECG	ERJ-3EKF3833V	P383KHKR-ND	RES 383 kΩ 1/10 W 1% 0603 SMD
13	2	R2, R18	20 kΩ	603	Panasonic-ECG	ERJ-3EKF2002V	P20.0KHCT-ND	RES 20 kΩ 1/10 W 1% 0603 SMD
14	3	R5, R24, R26	100 kΩ	603	Panasonic-ECG	ERJ-3EKF1003V	P100KHCT-ND	RES 100 kΩ 1/10 W 1% 0603 SMD
15	2	R9, R11	0	603	Vishay/Dale	CRCW06030000 Z0EA	541-0.0GDKR-ND	RES 0 Ω 1/10 W 5% 0603 SMD
16	2	R9a, R11a	40.2 kΩ	603	Panasonic-ECG	ERJ-3EKF4022V	P40.2KHKR-ND	RES 40.2 kΩ 1/10 W 1% 0603 SMD
17	1	R9b	80.6 kΩ	603	Panasonic-ECG	ERJ-3EKF8062V	P80.6KHKR-ND	RES 80.6 kΩ 1/10 W 1% 0603 SMD
18	1	R11b	32.4 kΩ	603	Yageo	RC0603FR- 0732K4L	311-32.4KHRDKR-ND	RES 32.4 kΩ 1/10 W 1% 0603 SMD
19	1	R16	120 kΩ	603	Panasonic-ECG	ERA-3AEB124V	P120KDBDKR-ND	RES 120 kΩ 1/10 W .1% 0603 SMD

Table 4. Bill of Materials (continued)

ITEM	QUANTITY	DESIGNATOR	VALUE	FOOTPRINT	MANUFACTURER	MANUFACTURER PART NO.	VENDER PART NO.	DESCRIPTION
20	1	R23	124 kΩ	603	Panasonic-ECG	ERJ-3EKF1243V	P124KHDKR-ND	RES 124 kΩ 1/10 W 1% 0603 SMD
21	14	TP8, TP9, TP9A, TP9B, TP11, TP11A, TP11B, TP20, TP23, TP24, TP25, TP26, TP27, TP28		TEST POINT 0.042	Keystone Electronics	5002	5002K-ND	TEST POINT PC MINI .040" D WHITE
22	5	TP1, TP2, TP3, TP4, TP5		TEST POINT 0.042	Keystone Electronics	5001	5001K-ND	TEST POINT PC MINI .040" D BLACK
23	1	U1		QFN28 [RHD]		TPS65252		
25	8	C2, C4, C6, C9A, C1, 1A, C15, C17, C18	4.7 nF	603	Panasonic-ECG	ECJ-1VB1H472K	PCC1780TR-ND	CAP 4700 pF 50 V CERAMIC X7R 0603
26	1	C1, Do not install	DNI: 22 μF	1210	AVX Corp	12103D226KAT2A	478-5999-6-ND	CAP CER 22 μF 25 V X5R 10% 1210

Evaluation Board/Kit Important Notice

Texas Instruments (TI) provides the enclosed product(s) under the following conditions:

This evaluation board/kit is intended for use for **ENGINEERING DEVELOPMENT, DEMONSTRATION, OR EVALUATION PURPOSES ONLY** and is not considered by TI to be a finished end-product fit for general consumer use. Persons handling the product(s) must have electronics training and observe good engineering practice standards. As such, the goods being provided are not intended to be complete in terms of required design-, marketing-, and/or manufacturing-related protective considerations, including product safety and environmental measures typically found in end products that incorporate such semiconductor components or circuit boards. This evaluation board/kit does not fall within the scope of the European Union directives regarding electromagnetic compatibility, restricted substances (RoHS), recycling (WEEE), FCC, CE or UL, and therefore may not meet the technical requirements of these directives or other related directives.

Should this evaluation board/kit not meet the specifications indicated in the User's Guide, the board/kit may be returned within 30 days from the date of delivery for a full refund. **THE FOREGOING WARRANTY IS THE EXCLUSIVE WARRANTY MADE BY SELLER TO BUYER AND IS IN LIEU OF ALL OTHER WARRANTIES, EXPRESSED, IMPLIED, OR STATUTORY, INCLUDING ANY WARRANTY OF MERCHANTABILITY OR FITNESS FOR ANY PARTICULAR PURPOSE.**

The user assumes all responsibility and liability for proper and safe handling of the goods. Further, the user indemnifies TI from all claims arising from the handling or use of the goods. Due to the open construction of the product, it is the user's responsibility to take any and all appropriate precautions with regard to electrostatic discharge.

EXCEPT TO THE EXTENT OF THE INDEMNITY SET FORTH ABOVE, NEITHER PARTY SHALL BE LIABLE TO THE OTHER FOR ANY INDIRECT, SPECIAL, INCIDENTAL, OR CONSEQUENTIAL DAMAGES.

TI currently deals with a variety of customers for products, and therefore our arrangement with the user **is not exclusive.**

TI assumes **no liability for applications assistance, customer product design, software performance, or infringement of patents or services described herein.**

Please read the User's Guide and, specifically, the Warnings and Restrictions notice in the User's Guide prior to handling the product. This notice contains important safety information about temperatures and voltages. For additional information on TI's environmental and/or safety programs, please contact the TI application engineer or visit www.ti.com/esh.

No license is granted under any patent right or other intellectual property right of TI covering or relating to any machine, process, or combination in which such TI products or services might be or are used.

FCC Warning

This evaluation board/kit is intended for use for **ENGINEERING DEVELOPMENT, DEMONSTRATION, OR EVALUATION PURPOSES ONLY** and is not considered by TI to be a finished end-product fit for general consumer use. It generates, uses, and can radiate radio frequency energy and has not been tested for compliance with the limits of computing devices pursuant to part 15 of FCC rules, which are designed to provide reasonable protection against radio frequency interference. Operation of this equipment in other environments may cause interference with radio communications, in which case the user at his own expense will be required to take whatever measures may be required to correct this interference.

EVM Warnings and Restrictions

It is important to operate this EVM within the input voltage range of and the output voltage range of .

Exceeding the specified input range may cause unexpected operation and/or irreversible damage to the EVM. If there are questions concerning the input range, please contact a TI field representative prior to connecting the input power.

Applying loads outside of the specified output range may result in unintended operation and/or possible permanent damage to the EVM. Please consult the EVM User's Guide prior to connecting any load to the EVM output. If there is uncertainty as to the load specification, please contact a TI field representative.

During normal operation, some circuit components may have case temperatures greater than . The EVM is designed to operate properly with certain components above as long as the input and output ranges are maintained. These components include but are not limited to linear regulators, switching transistors, pass transistors, and current sense resistors. These types of devices can be identified using the EVM schematic located in the EVM User's Guide. When placing measurement probes near these devices during operation, please be aware that these devices may be very warm to the touch.

Mailing Address: Texas Instruments, Post Office Box 655303, Dallas, Texas 75265
Copyright © 2011, Texas Instruments Incorporated

IMPORTANT NOTICE

Texas Instruments Incorporated and its subsidiaries (TI) reserve the right to make corrections, modifications, enhancements, improvements, and other changes to its products and services at any time and to discontinue any product or service without notice. Customers should obtain the latest relevant information before placing orders and should verify that such information is current and complete. All products are sold subject to TI's terms and conditions of sale supplied at the time of order acknowledgment.

TI warrants performance of its hardware products to the specifications applicable at the time of sale in accordance with TI's standard warranty. Testing and other quality control techniques are used to the extent TI deems necessary to support this warranty. Except where mandated by government requirements, testing of all parameters of each product is not necessarily performed.

TI assumes no liability for applications assistance or customer product design. Customers are responsible for their products and applications using TI components. To minimize the risks associated with customer products and applications, customers should provide adequate design and operating safeguards.

TI does not warrant or represent that any license, either express or implied, is granted under any TI patent right, copyright, mask work right, or other TI intellectual property right relating to any combination, machine, or process in which TI products or services are used. Information published by TI regarding third-party products or services does not constitute a license from TI to use such products or services or a warranty or endorsement thereof. Use of such information may require a license from a third party under the patents or other intellectual property of the third party, or a license from TI under the patents or other intellectual property of TI.

Reproduction of TI information in TI data books or data sheets is permissible only if reproduction is without alteration and is accompanied by all associated warranties, conditions, limitations, and notices. Reproduction of this information with alteration is an unfair and deceptive business practice. TI is not responsible or liable for such altered documentation. Information of third parties may be subject to additional restrictions.

Resale of TI products or services with statements different from or beyond the parameters stated by TI for that product or service voids all express and any implied warranties for the associated TI product or service and is an unfair and deceptive business practice. TI is not responsible or liable for any such statements.

TI products are not authorized for use in safety-critical applications (such as life support) where a failure of the TI product would reasonably be expected to cause severe personal injury or death, unless officers of the parties have executed an agreement specifically governing such use. Buyers represent that they have all necessary expertise in the safety and regulatory ramifications of their applications, and acknowledge and agree that they are solely responsible for all legal, regulatory and safety-related requirements concerning their products and any use of TI products in such safety-critical applications, notwithstanding any applications-related information or support that may be provided by TI. Further, Buyers must fully indemnify TI and its representatives against any damages arising out of the use of TI products in such safety-critical applications.

TI products are neither designed nor intended for use in military/aerospace applications or environments unless the TI products are specifically designated by TI as military-grade or "enhanced plastic." Only products designated by TI as military-grade meet military specifications. Buyers acknowledge and agree that any such use of TI products which TI has not designated as military-grade is solely at the Buyer's risk, and that they are solely responsible for compliance with all legal and regulatory requirements in connection with such use.

TI products are neither designed nor intended for use in automotive applications or environments unless the specific TI products are designated by TI as compliant with ISO/TS 16949 requirements. Buyers acknowledge and agree that, if they use any non-designated products in automotive applications, TI will not be responsible for any failure to meet such requirements.

Following are URLs where you can obtain information on other Texas Instruments products and application solutions:

Products

Audio	www.ti.com/audio
Amplifiers	amplifier.ti.com
Data Converters	dataconverter.ti.com
DLP® Products	www.dlp.com
DSP	dsp.ti.com
Clocks and Timers	www.ti.com/clocks
Interface	interface.ti.com
Logic	logic.ti.com
Power Mgmt	power.ti.com
Microcontrollers	microcontroller.ti.com
RFID	www.ti-rfid.com
RF/IF and ZigBee® Solutions	www.ti.com/lprf

Applications

Communications and Telecom	www.ti.com/communications
Computers and Peripherals	www.ti.com/computers
Consumer Electronics	www.ti.com/consumer-apps
Energy and Lighting	www.ti.com/energy
Industrial	www.ti.com/industrial
Medical	www.ti.com/medical
Security	www.ti.com/security
Space, Avionics and Defense	www.ti.com/space-avionics-defense
Transportation and Automotive	www.ti.com/automotive
Video and Imaging	www.ti.com/video
Wireless	www.ti.com/wireless-apps

TI E2E Community Home Page

e2e.ti.com

Mailing Address: Texas Instruments, Post Office Box 655303, Dallas, Texas 75265
Copyright © 2011, Texas Instruments Incorporated