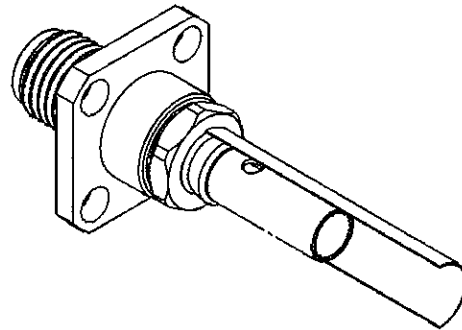
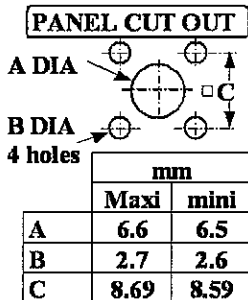
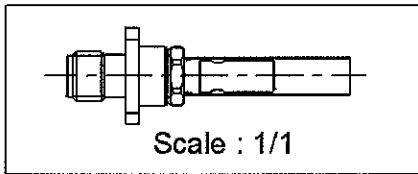
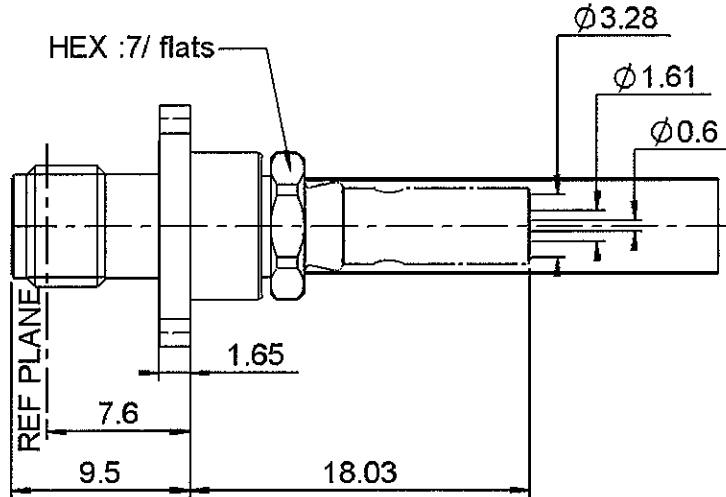
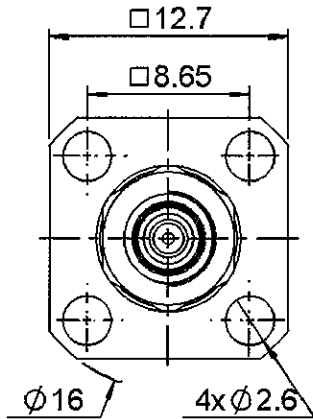


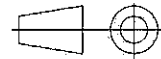
**STRAIGHT JACK SQUARE FLANGE**  
**CRIMP AND SOLDER TYPE - CABLE 2.6/50 S**

**R125.272.001**

Series : SMA



All dimensions are in mm.



| COMPONENTS     | MATERIALS        | PLATINGS (µm)          |
|----------------|------------------|------------------------|
| BODY           | STAINLESS STEEL  | PASSIVATED .           |
| CENTER CONTACT | BERYLLIUM COPPER | GOLD 1.3 OVER NICKEL 2 |
| OUTER CONTACT  | -                | -                      |
| INSULATOR      | PTFE             | -                      |
| GASKET         | -                | -                      |
| OTHERS PARTS   | BRASS            | NICKEL 2               |
| -              | -                | -                      |
| -              | -                | -                      |

Issue : 0539 E

In the effort to improve our products, we reserve the right to make changes judged to be necessary.



**STRAIGHT JACK SQUARE FLANGE**  
**CRIMP AND SOLDER TYPE - CABLE 2.6/50 S**

**R125.272.001**

Series : SMA

**PACKAGING**

|          |            |            |
|----------|------------|------------|
| Standard | Unit       | Other      |
| 100      | 'W' option | Contact us |

**SPECIFICATION**

4050044

**ELECTRICAL CHARACTERISTICS**

|                                 |        |                      |
|---------------------------------|--------|----------------------|
| Impedance                       |        | 50 Ω                 |
| Frequency                       |        | 0-12.4 GHz           |
| VSWR                            | 1.15 + | 0.020 x F(GHz) Maxi  |
| Insertion loss                  |        | 0.06 √F(GHz) dB Maxi |
| RF leakage                      | - (    | 60 - F(GHz)) dB Maxi |
| Voltage rating                  |        | 250 Veff Maxi        |
| Dielectric withstanding voltage |        | 750 Veff mini        |
| Insulation resistance           |        | 5000 MΩ mini         |

**CABLE ASSEMBLY**

| Stripping | a    | b    | c    | d    | e    | f    |
|-----------|------|------|------|------|------|------|
| mm        | 2.85 | 7.00 | 18.0 | 0.00 | 8.15 | 0.00 |

Assembly instruction :

Recommended cable(s)  
 RG 316  
 RG 188  
 KX 22A

Characteristics indicated on this data sheet are those that can be achieved with the highest performance cable. Intrinsic limitations of the cable may diminish the performance of the assembly

Cable retention

- pull off 90 N mini  
 - torque NA N.cm

**MECHANICAL CHARACTERISTICS**

|                            |    |           |
|----------------------------|----|-----------|
| Center contact retention   |    |           |
| Axial force – Mating end   | 27 | N mini    |
| Axial force – Opposite end | NA | N mini    |
| Torque                     | NA | N.cm mini |

**TOOLING**

| Part Number  | Description   | Hexagon |
|--------------|---------------|---------|
| R282.211.000 | CRIMPING TOOL | 3.25    |
| R282.235.003 | CRIMPING DIES | 3.25    |
| R282.293.000 | CRIMPING TOOL |         |

|                    |       |      |
|--------------------|-------|------|
| Recommended torque |       |      |
| Mating             | NA    | N.cm |
| Panel nut          | NA    | N.cm |
| Clamp nut          | 100   | N.cm |
| A/F clamp nut      | 7.000 | mm   |

|             |       |             |
|-------------|-------|-------------|
| Mating life | 500   | Cycles mini |
| Weight      | 5.200 | g           |

**OTHERS CHARACTERISTICS**

**ENVIRONMENTAL**

|                       |          |           |
|-----------------------|----------|-----------|
| Operating temperature | -65/+165 | °C        |
| Hermetic seal         | NA       | Atm.cm3/s |
| Panel leakage         | NA       |           |

Issue : 0539 E

In the effort to improve our products, we reserve the right to make changes judged to be necessary.



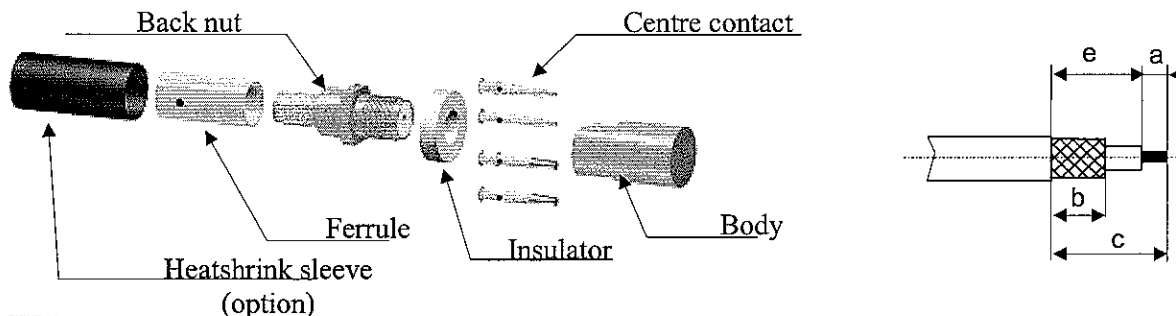
**RADIALL**®

**STRAIGHT JACK SQUARE FLANGE**  
**CRIMP AND SOLDER TYPE - CABLE 2.6/50 S**

**R125.272.001**

Series : SMA

COMPONENTS



**1**

Slide the heatshrink sleeve onto the cable (Option).  
 Slide the ferrule onto the cable.  
 Position the ferrule's hole at the front if soldering.  
 Position the ferrule's hole at the back if crimping.  
 Strip the cable.

**4**

Slide the centre contact on until it bottoms against the insulator back nut.  
 Solder or crimp the contact ( see connector TDS ).

**2**

Fan the braid.  
 Slide the cable into the back nut.

**5**

Screw the back nut into the connector body with the adapted wrench.  
 Recommended coupling torque ( see connector TDS)

**3**

Slide the ferrule over the braid.  
 Crimp the ferrule with crimping tool ( see connector TDS ).

**6**

Slide the sleeve over the ferrule and heatshrink it in place (option).

Issue : 0539 E

In the effort to improve our products, we reserve the right to make changes judged to be necessary.

