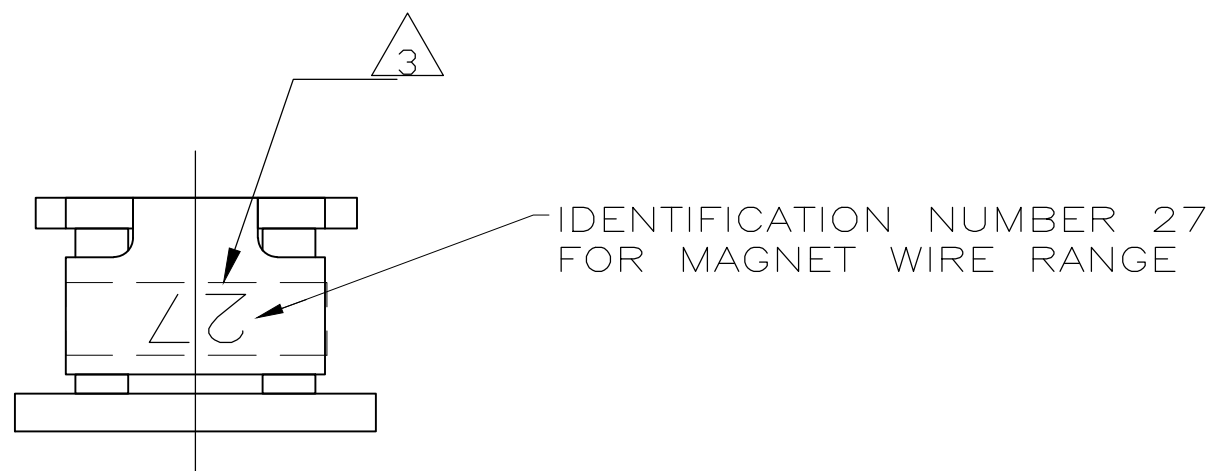
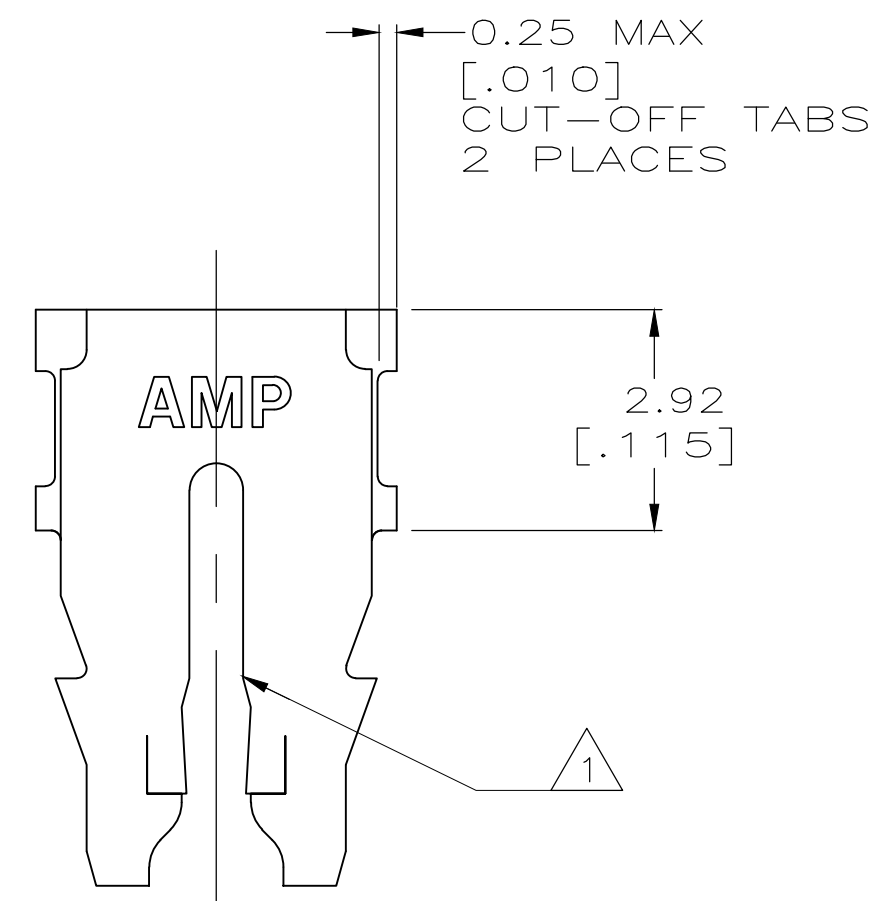
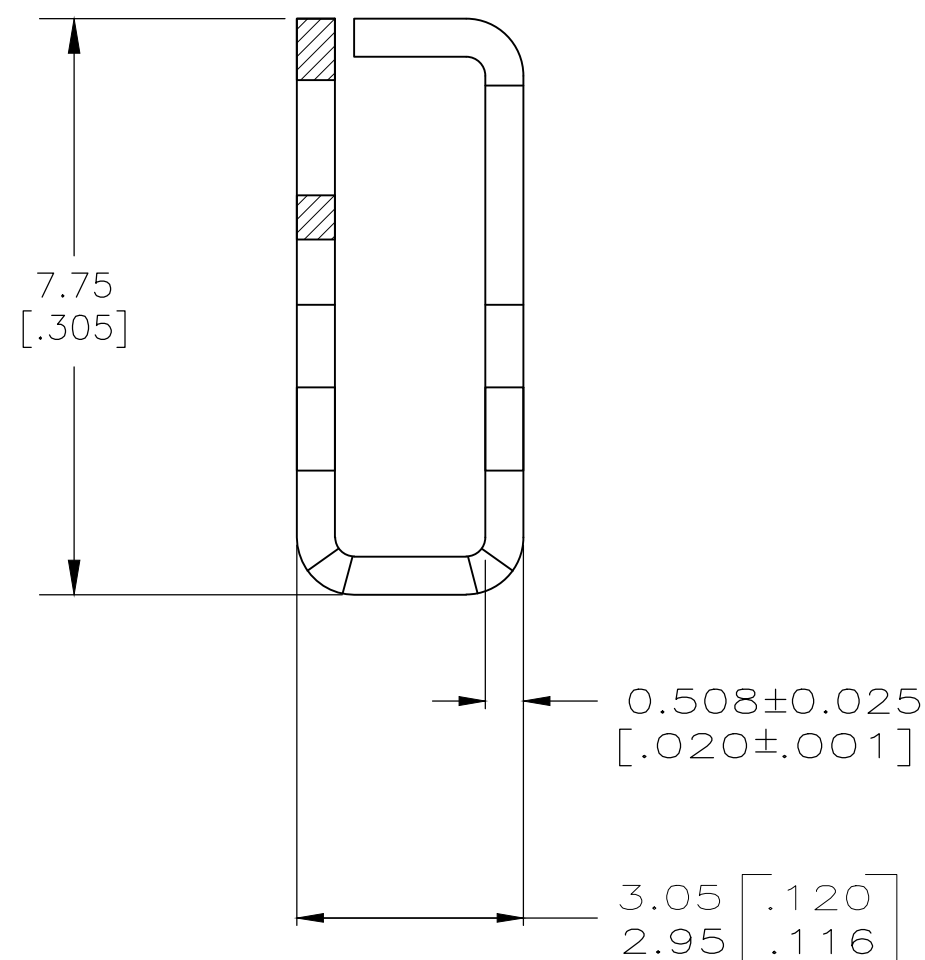
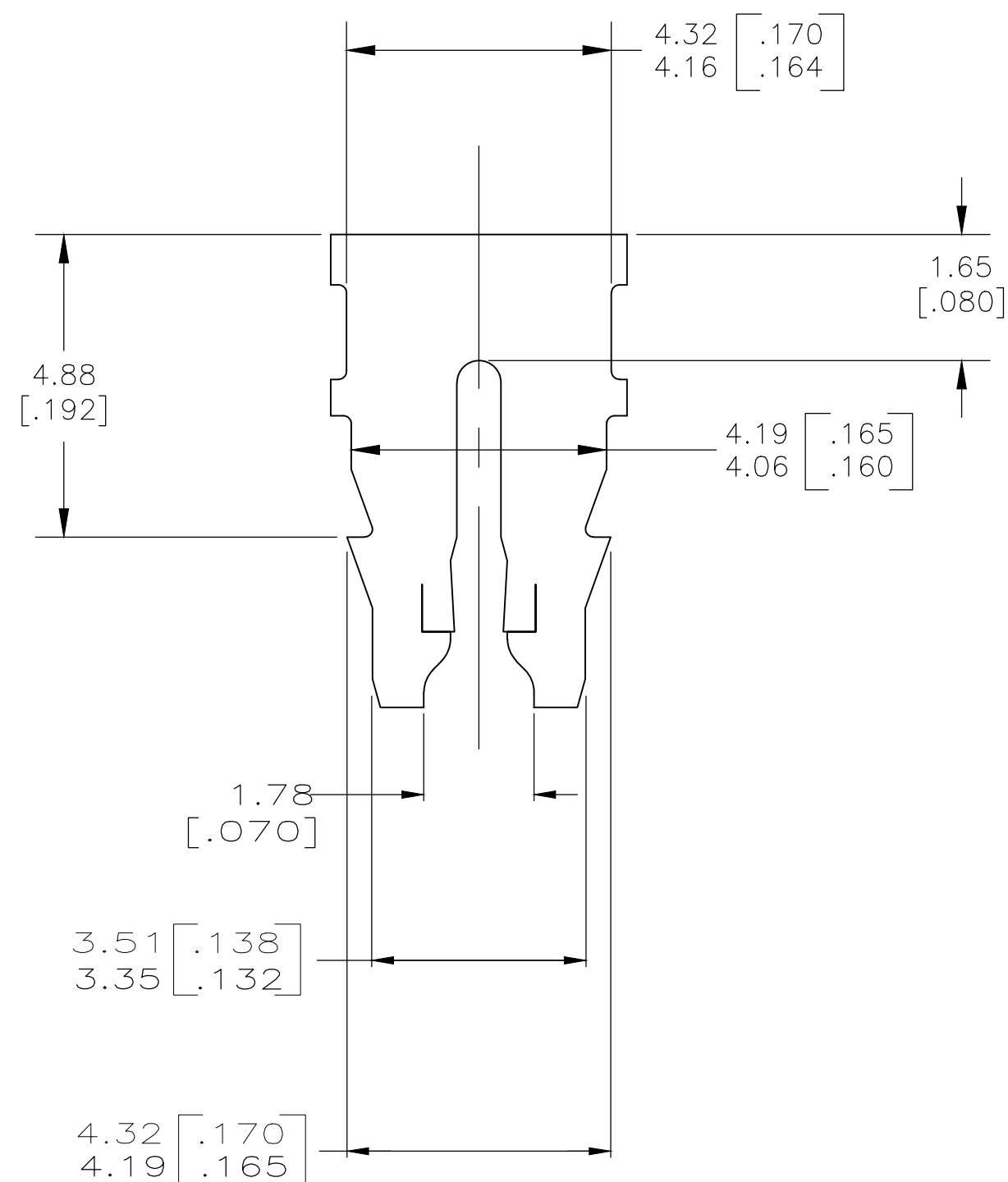


THIS DRAWING IS UNPUBLISHED. RELEASED FOR PUBLICATION
 © COPYRIGHT - TE Connectivity Ltd. ALL RIGHTS RESERVED.

REVISIONS				
P	LTR	DESCRIPTION	DATE	DWN APVD
B1		DRAWING CLARIFICATION ON WIRE RANGE	08FEB2018	SV PKS



- 1 SLOT TERMINATES EITHER A SINGLE OR DOUBLE MAGNET WIRE OF THE SAME SIZE AND TYPE.
COPPER RANGE: 0.91-1.15mm [#19-#17] AWG.
- 2 SPECIAL CAVITY ANVIL LOCATION REQUIRED
4.83±0.07 [.190±.003]. REF APPLICATION SPEC 114-2046, SEC. 3.2, NOTE 7. REVISION T OR LATER.
- 3 ORANGE COLORING APPLIED TO THIS SURFACE DURING LOOSE PIECE OPERATION TO PROVIDE COLOR CODING OF MAGNET WIRE RANGE.



1742240-1
PART NUMBER

THIS DRAWING IS A CONTROLLED DOCUMENT.		DWN 17FEB2005 MICHAEL S. FEHER	TE TE Connectivity	
DIMENSIONS: INCHES		CHK 17FEB2005 KURT A. RANDOLPH		
TOLERANCES UNLESS OTHERWISE SPECIFIED:		APVD 17FEB2005 KURT A. RANDOLPH	NAME	
0 PLC ± -		PRODUCT SPEC	TERMINAL, SPLICE, LOOSE PIECE, 300 SERIES MAG-MATE	
1 PLC ± -		108-2012	-	
2 PLC ± 0.25 [.010]		APPLICATION SPEC	SIZE	CAGE CODE
3 PLC ± -		114-2046 2	A2	00779
4 PLC ± -		WEIGHT	DRAWING NO	RESTRICTED TO
ANGLES ± -		0.000000	C=1742240	-
MATERIAL	FINISH	CUSTOMER DRAWING	SCALE	SHEET
4M BRASS	0.002032 [.000080] MIN TIN PLATE		10:1	1 OF 1
				REV B1