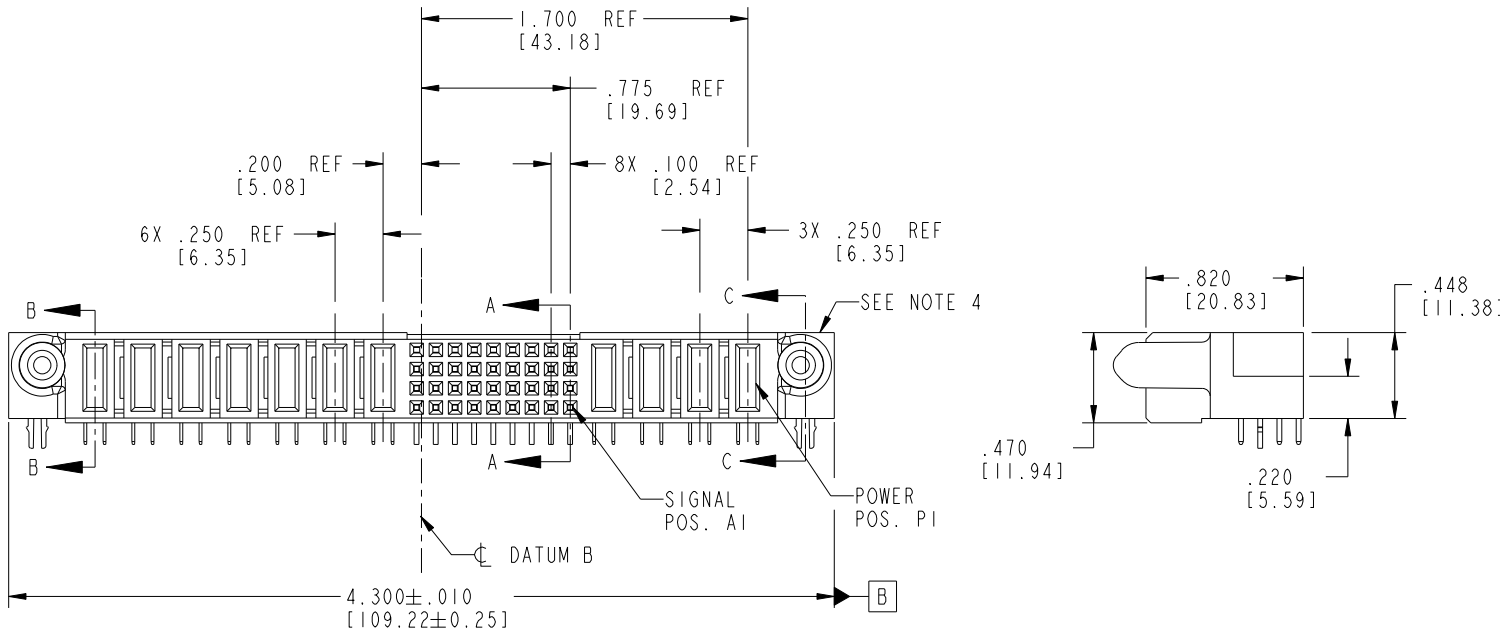
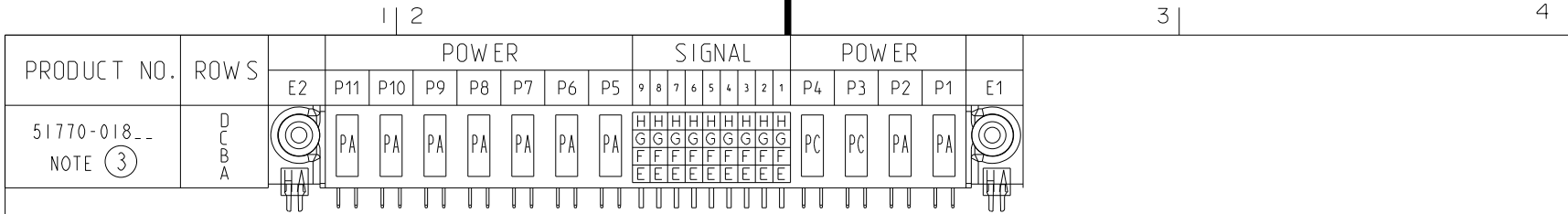


Tous droits strictement réservés. Reproduction ou communication a des tiers interdite sous quelque forme que ce soit sans autorisation écrite du propriétaire. Propriété de c FCI. Droits de reproduction FCI.



All rights strictly reserved. Reproduction or issue to third parties in any form whatever is not permitted without written authority from the proprietor. Property of FCI. Copyright FCI.



CODE	DIM "M" MATING LENGTH	CONTACT TYPE
E	N/A [N/A]	SIGNAL
F	N/A [N/A]	SIGNAL
G	N/A [N/A]	SIGNAL
H	N/A [N/A]	SIGNAL
PA	.042 [1.07]	POWER
PC	.092 [2.34]	POWER
HA	N/A [N/A]	HOLD-DOWN

mat'l code SEE NOTE 2				tolerances unless otherwise specified		CUSTOMER		 www.fciconnect.com	
ltr	ecn no.	dr	date	linear	.XX±.01/0.X±0.3	COPY		title	
A	V04-0696	TAB	07/07/04		.XXX±.005/0.XX±0.13	projection		4P + 36S + 7P	
B	V04-1133	TAB	12/01/04	angles	.XXX±.0020/0.XXX±0.051			R/A SOLDER RECEPTACLE	
C	DG08-0251	W D	09/13/08		0°±2°	INCH/MM		product family PwrBlade code	
				dr	T. BRUNGARD 07/07/04	scale		size dwg no	
				engr	M. GRAY 07/07/04	1:1		A 51770-018 213	
				chr	M. GRAY 07/07/04			sheet	
				appd	M. GRAY 07/07/04			1 of 4	
sheet index	revision sheet	C 1	C 2	C 3	C 4				

Pro/E

PDM: Rev: C

STATUS: Released

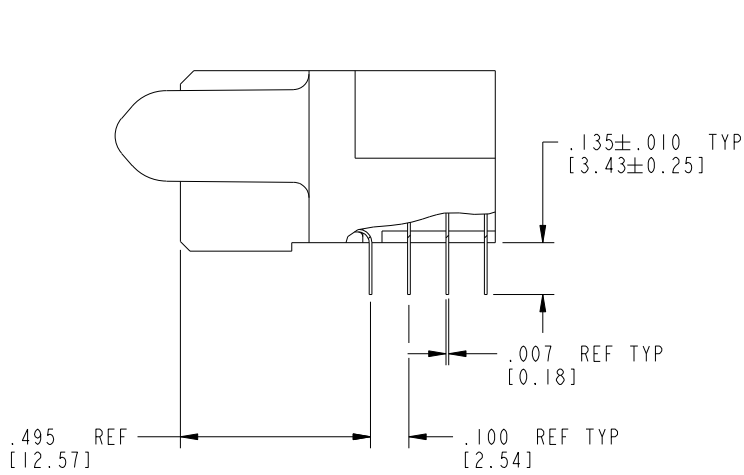
Printed: Dec 20, 2010

Tous droits strictement réservés. Reproduction ou communication a des tiers interdite sous quelque forme que ce soit sans autorisation écrite du propriétaire. Propriété de c FCI. Droits de reproduction FCI.

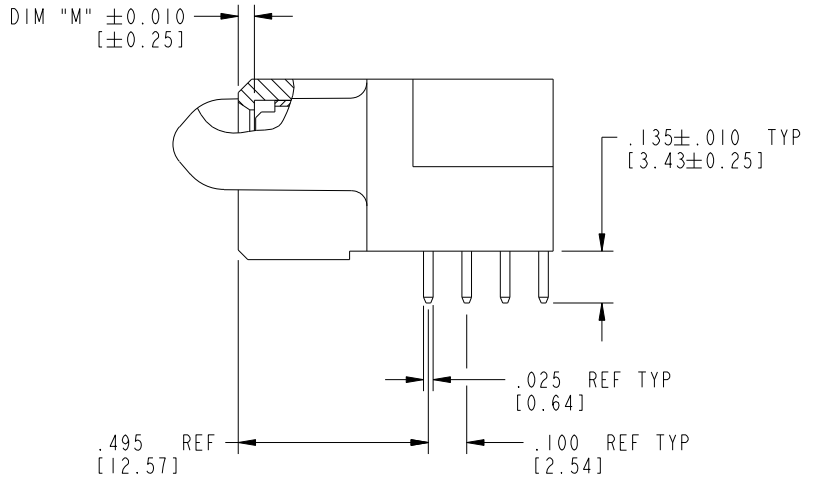
All rights strictly reserved. Reproduction or issue to third parties in any form whatever is not permitted without written authority from the proprietor. Property of FCI. Copyright FCI.



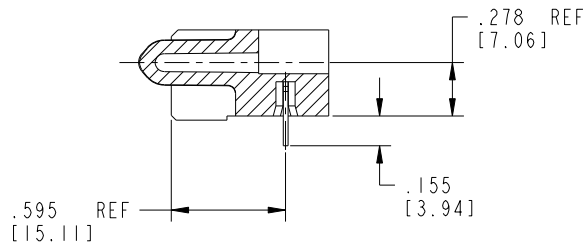
PRODUCT NUMBER
51770-018__



BROKEN-OUT SECTION A-A
SCALE 2:1



BROKEN-OUT SECTION B-B
SCALE 2:1



SECTION C-C

mat'l code		SEE NOTE 2		tolerances unless otherwise specified		CUSTOMER		FCI	
ltr	ecn no.	dr	date	linear	.XX±.01/0.X±0.3	COPY		www.fciconnect.com	
C				projection	.XXY±.005/0.XX±0.13	INCH/MM		title	
				angles	.XXX±.0020/0.XXX±0.051	1:1		4P + 36S + 7P R/A SOLDER RECEPTACLE	
				dr	T. BRUNGARD 07/07/04	scale		product family	
				engr	M. GRAY 07/07/04	1:1		PwrBlade	
				chr	M. GRAY 07/07/04			code	
				appd	M. GRAY 07/07/04			213	
sheet index		revision sheet						size	
								dwg no	
								A 51770-018	
								sheet	
								2 of 4	

cage code 28536

Pro/E

PDM: Rev: C

STATUS: Released

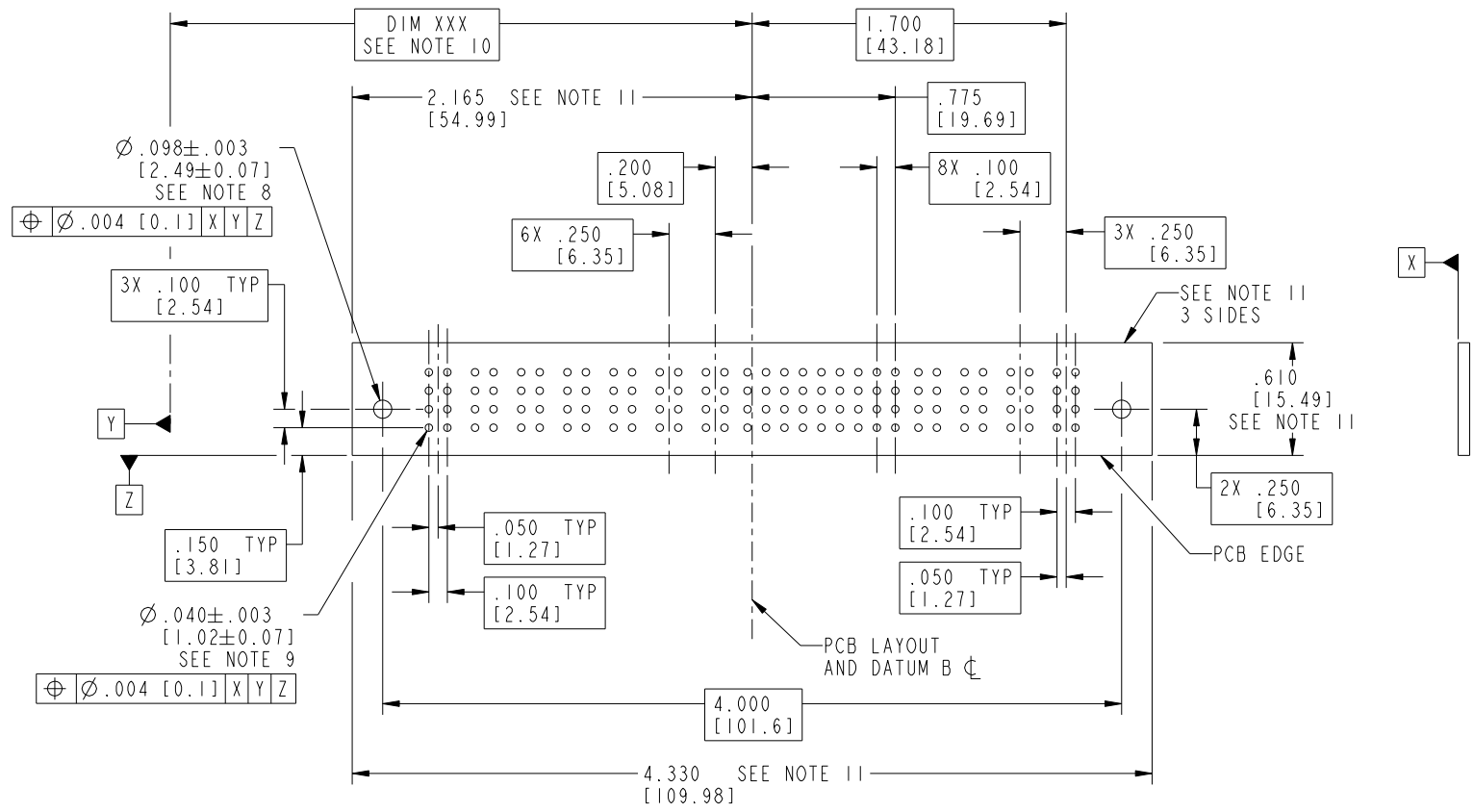
Printed: Dec 20, 2010

Tous droits strictement réservés. Reproduction ou communication a des tiers interdite sous quelque forme que ce soit sans autorisation écrite du propriétaire. Propriété de c FCI. Droits de reproduction FCI.



All rights strictly reserved. Reproduction or issue to third parties in any form whatever is not permitted without written authority from the proprietor. Property of FCI. Copyright FCI.

PRODUCT NUMBER
51770-018__



mat'l code		SEE NOTE 2		tolerances unless otherwise specified		CUSTOMER		FCI	
ltr	ecn no.	dr	date	linear	.XX±.01/0.X±0.3	COPY		www.fciconnect.com	
C				angles	.XXY±.005/0.XX±0.13	projection		title 4P + 36S + 7P	
					.XXX±.0020/0.XXX±0.051	INCH/MM		R/A SOLDER RECEPTACLE	
				dr	0°±2°	scale		product family PwrBlade	
				engr	T. BRUNGARD 07/07/04	1:1		code 213	
				chr	M. GRAY 07/07/04			size dwg no	
				appd	M. GRAY 07/07/04			A 51770-018	
sheet index		revision sheet						sheet 3 of 4	

cage code 28556

Pro/E

PDM: Rev: C

STATUS: Released

Printed: Dec 20, 2010

PRODUCT NUMBER
51770-018__

NOTES:

1. DIMENSIONS AND TOLERANCES ARE IN ACCORDANCE WITH ASME Y14.5M, 1994 UNLESS OTHERWISE SPECIFIED.

CONNECTOR NOTES:

2. HOUSING MATERIAL: UL 94 V-0 GLASS FILLED HIGH-TEMP THERMOPLASTIC
 POWER CONTACT MATERIAL: COPPER ALLOY
 SIGNAL PIN MATERIAL: COPPER ALLOY

 3. SEE ITEM 5 & 6 IN PRINT 10064183 FOR PLATING SPEC OF 51770-018 AND 51770-018LF RESPECTIVELY.

4. MANUFACTURER'S NAME, P/N, AND DATE CODE TO APPEAR ON THIS SURFACE.

5. PRODUCT SPECIFICATION GS-12-149.
APPLICATION SPECIFICATION BUS-20-067.

6. PACKAGED IN TRAYS.

PCB NOTES:

7. ALL HOLE DIAMETERS ARE FINISHED HOLE SIZE.


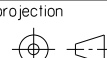

8. MOUNTING HOLES, WHERE APPLICABLE, ARE UNPLATED.

9. $\varnothing .0453 \pm .0010$ [1.151 \pm 0.025] DRILLED HOLES PLATED WITH
 .0003 [0.008] MIN SnPb OVER .001 [0.03]
 TO .003 [0.08] Cu PLATING TO ACHIEVE
 $\varnothing .040 \pm .003$ [1.02 \pm .07] HOLE.

10. "DIM XXX" TO BE DETERMINED BY THE CUSTOMER.

11. CONNECTOR KEEP-OUT ZONE.

12. A  SYMBOL WILL BE NEXT TO ANY DIMENSION, VIEW, OR NOTE WHICH HAS BEEN MODIFIED WITH THE CURRENT DRAWING REVISION.

mat'l code		SEE NOTE 2		tolerances unless otherwise specified		CUSTOMER			
ltr	ecn no.	dr	date	linear	.XX \pm .01 / 0.X \pm 0.3	COPY		www.fciconnect.com	
C				projection	.XXX \pm .005 / 0.XX \pm 0.13			title 4P + 36S + 7P R/A SOLDER RECEPTACLE	
				angles	.XXX \pm .0020 / 0.XXX \pm 0.051			product family PwrBlade code 213	
				dr	T. BRUNGARD 07/07/04	INCH/MM		size A 51770-018 sheet 4 of 4	
				engr	M. GRAY 07/07/04	scale 1:1			
				chr	M. GRAY 07/07/04				
				appd	M. GRAY 07/07/04				
sheet index	revision sheet								

Tous droits strictement réservés. Reproduction ou communication a des tiers interdite sous quelque forme que ce soit sans autorisation écrite du propriétaire. Propriete de c FCI. Droits de reproduction FCI.



All rights strictly reserved. Reproduction or issue to third parties in any form whatever is not permitted without written authority from the proprietor. Property of FCI. Copyright FCI.