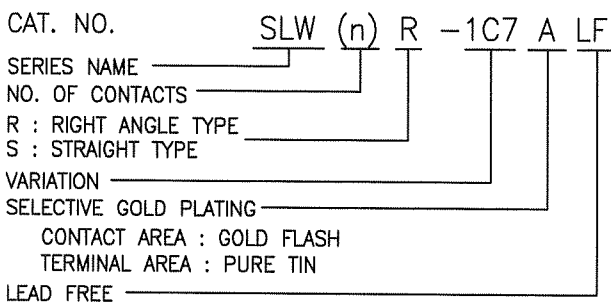


CAT. NO. & DIMENSIONS

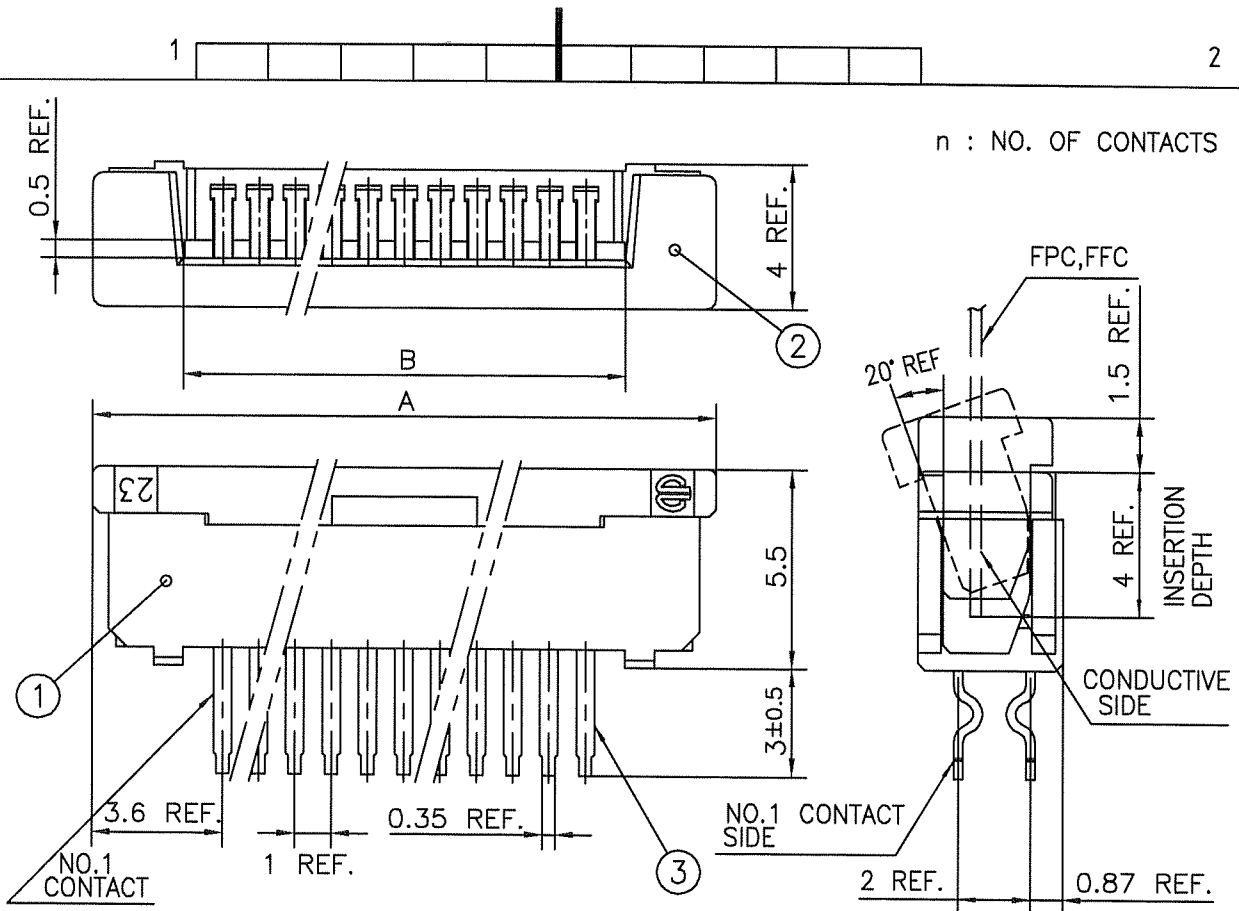
NO. OF CONTACTS (n)	CAT. NO.		DIMENSIONS (NOTE1)	
	RIGHT ANGLE TYPE	STRAIGHT TYPE	A ± 0.3	B ± 0.3
4	SLW 4R-1C7ALF	SLW 4S-1C7ALF	10.2	5.2
5	SLW 5R-1C7ALF	SLW 5S-1C7ALF	11.2	6.2
6	SLW 6R-1C7ALF	SLW 6S-1C7ALF	12.2	7.2
7	SLW 7R-1C7ALF	SLW 7S-1C7ALF	13.2	8.2
8	SLW 8R-1C7ALF	SLW 8S-1C7ALF	14.2	9.2
9	SLW 9R-1C7ALF	SLW 9S-1C7ALF	15.2	10.2
10	SLW10R-1C7ALF	SLW10S-1C7ALF	16.2	11.2
11	SLW11R-1C7ALF	SLW11S-1C7ALF	17.2	12.2
12	SLW12R-1C7ALF	SLW12S-1C7ALF	18.2	13.2
13	SLW13R-1C7ALF	SLW13S-1C7ALF	19.2	14.2
14	SLW14R-1C7ALF	SLW14S-1C7ALF	20.2	15.2
15	SLW15R-1C7ALF	SLW15S-1C7ALF	21.2	16.2
16	SLW16R-1C7ALF	SLW16S-1C7ALF	22.2	17.2
17	SLW17R-1C7ALF	SLW17S-1C7ALF	23.2	18.2
18	SLW18R-1C7ALF	SLW18S-1C7ALF	24.2	19.2
19	SLW19R-1C7ALF	SLW19S-1C7ALF	25.2	20.2
20	SLW20R-1C7ALF	SLW20S-1C7ALF	26.2	21.2
21	SLW21R-1C7ALF	SLW21S-1C7ALF	27.2	22.2
22	SLW22R-1C7ALF	SLW22S-1C7ALF	28.2	23.2
23	SLW23R-1C7ALF	SLW23S-1C7ALF	29.2	24.2
24	SLW24R-1C7ALF	SLW24S-1C7ALF	30.2	25.2
25	SLW25R-1C7ALF	SLW25S-1C7ALF	31.2	26.2
26	SLW26R-1C7ALF	SLW26S-1C7ALF	32.2	27.2
27	SLW27R-1C7ALF	SLW27S-1C7ALF	33.2	28.2
28	SLW28R-1C7ALF	SLW28S-1C7ALF	34.2	29.2
29	SLW29R-1C7ALF	SLW29S-1C7ALF	35.2	30.2
30	SLW30R-1C7ALF	SLW30S-1C7ALF	36.2	31.2



NOTE

1. SEE PART DRAWINGS FOR DIMENSIONS A,B.

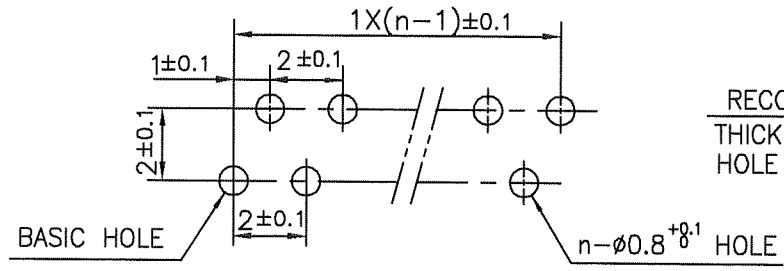
mat'l. code				surface ISO 1302 <input checked="" type="checkbox"/>	tolerance ISO 406 ISO 1101	projection 	product family 58JF/TF	CODE JP
ltr	ecn no	dr	date	tolerances unless otherwise specified		mm 	title CAT NO. TABLE FOR 1mm SPACING CONNECTOR (Cat. No. SLW__R/S-1C7ALF)	
A				angles	linear		scale \times	
		dr	<i>S. Nishida</i> 2011-10-11				dwg no sheet 2 of 5 size	
		enr	<i>S. Nishida</i> 2011-10-11				10118640 A4	
		chr	<i>Xerone</i> 2011-10-11					
		appd	<i>M. Ueda</i> Oct 11/11					
sheet index	revision sheet						type Product Customer Drawing	
								Rev. A



1. THIS PRODUCT MEETS EUROPEAN UNION DIRECTIVES AND OTHER COUNTRY REGULATIONS AS DESCRIBED IN GS-22-008

2. THE HOUSING WILL WITHSTAND EXPOSURE TO 260°C PEAK TEMPERATURE FOR 10 SECONDS IN A WAVE SOLDER APPLICATION WITH A 1.6mm THICK CIRCUIT BOARD.

PT.NO.	PARTS NAME	MATERIAL	Q'TY	NOTE
1	HOUSING	NYLON RESIN GLASS REINFORCED (UL94V-0)	1	COLOR : BLACK
2	SLIDER		1	
3	CONTACT	PHOSPHOR BRONZE	n	PLATING CONTACT AREA : GOLD FLASH TERMINAL AREA : PURE TIN



RECOMMENDED PC BOARD THICKNESS : 0.8~1.6 HOLE PATTERN (COMPONENT SIDE)

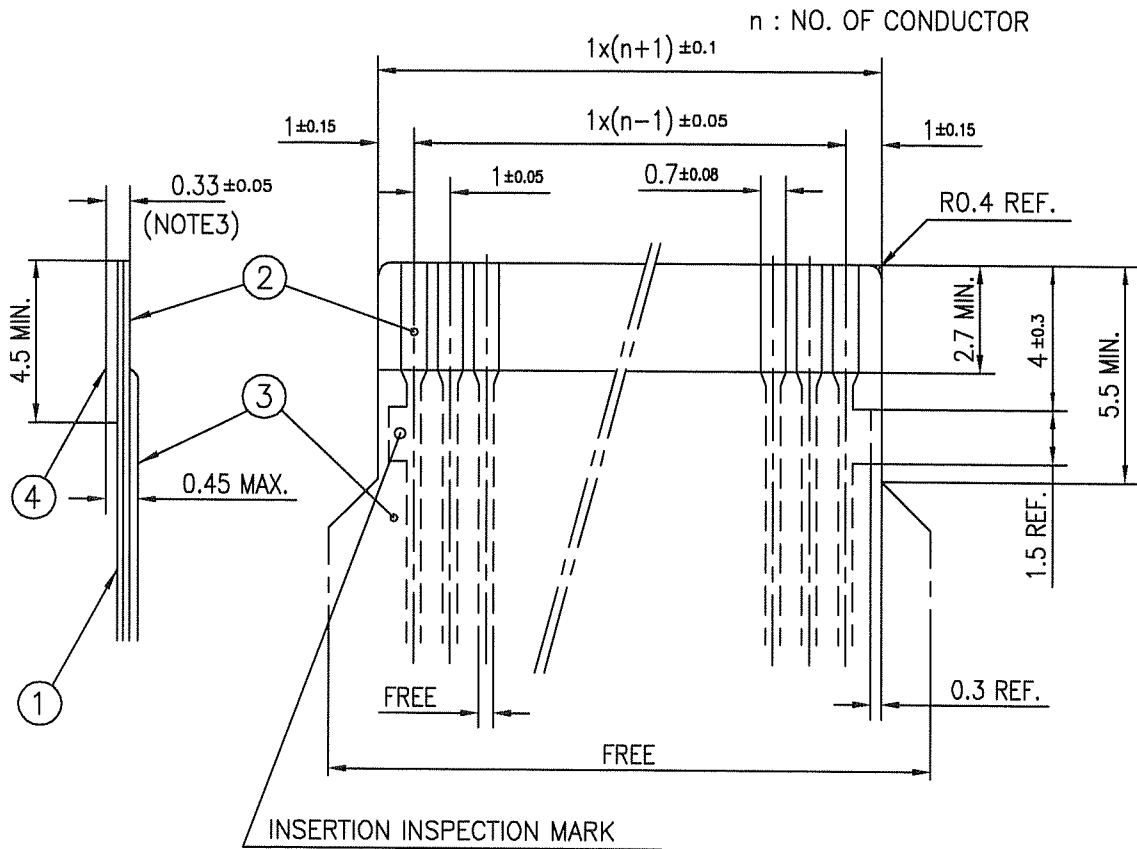
mat'l. code				surface ISO 1302 ✓		tolerance ISO 406 ISO 1101		projection		product family 58JF		CODE JP	
ltr	ecn no	dr	date	tolerances unless otherwise specified				mm		title			
A				angles		linear ± 0.3		scale X		1mm SPACING CONNECTOR (Cat. No. SLW__S-1C7ALF)			
				dr	2011-10-11				dwg no		sheet 3 of 5		size
				enr	2011-10-11				10118640				A4
				chr	2011-10-11				type		Product Customer Drawing		
				appd	2011/11								
sheet index		revision sheet										Rev. A	

form: A4



Copyright FCI.

RECOMMENDED CABLE (FPC)



PT. NO.	PARTS NAME	MATERIAL	THICKNESS (μm)
1	BASE FILM	POLYIMIDE OR POLYESTER OR EQUAL	25
2	CONDUCTOR	COPPER FOIL(PLATING : GOLD 0.25μm MIN.)	35
3	OVERLAY	POLYIMIDE OR POLYESTER OR EQUAL	—
4	SUPPORTING TAPE	POLYESTER OR POLYIMIDE OR EQUAL	188

NOTES

1. NO BURR AT EACH PORTION.
2. NO PEELING IN COMMON USE.
3. TOTAL THICKNESS LIMIT OF EACH MATERIAL (INCLUDING ADHESIVE AGENT) IS SPECIFIED.

mat'l. code		surface ISO 1302 <input checked="" type="checkbox"/>		tolerance ISO 406 <input checked="" type="checkbox"/>		projection		product family 58JF/TF		CODE JP	
ltr	ecn no	dr	date	tolerances unless otherwise specified				title			
A				angles	linear	mm		RECOMMENDED CABLE (Cat. No. SLW__R/S-1C7ALF)			
						scale \times		dwg no		sheet 5 of 5	
				dr	engr	chr	appd	10118640		size A4	
								type Product Customer Drawing			
sheet index	revision sheet										Rev. A



FCIconnect.com

Copyright FCI.