

10 9 8 7 6 5 4 3 2 1

F

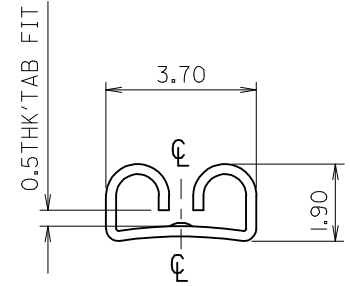
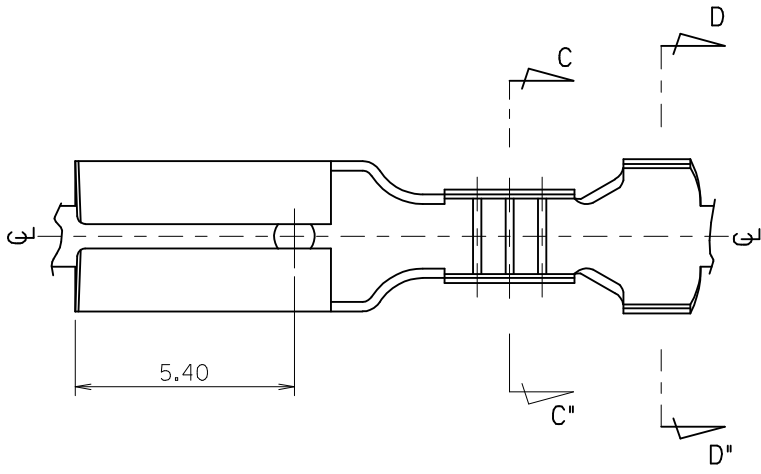
E

D

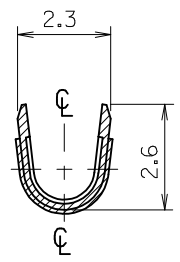
C

B

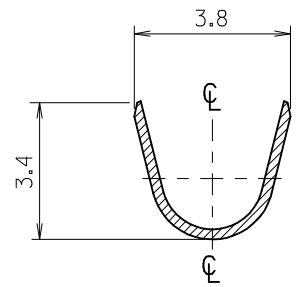
A



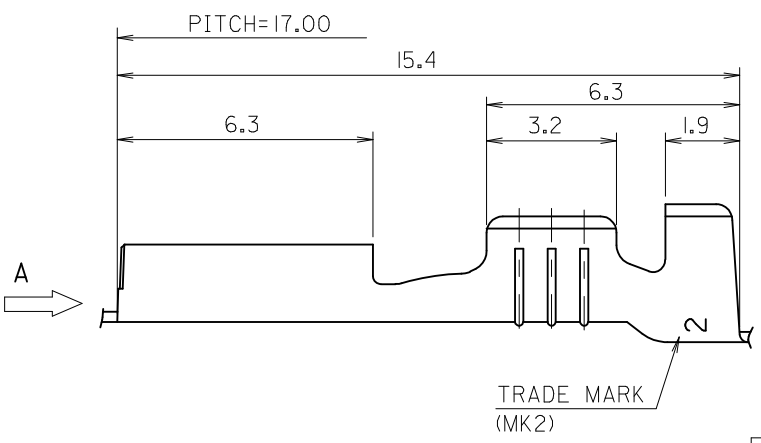
VIEW "A"



SECTION:C-C''



SECTION:D-D''



NOTES.

1. MATERIAL : BRASS
2. FINISH : 35711-0800 : UNPLATED
35711-0810 : ©PRE-TIN PLATED
0.8~1.8 μm TIN PLATING
OVERALL 0.3~0.8μm COPPER PLATING
3. PRODUCT SPECIFICATION : PS-35544-001
PS-35702-001
PS-68428-001
4. MATES WITH : 0.5t TAB
5. APPLICABLE WIRE RANGE : AWG #22~#20

REVISED EC NO: KOR2009-0111 DRWN: JHPARK01 2009/01/30 CHKD: WYANG 2009/01/30 APPR: YUNSIKKIM 2009/01/30	QUALITY SYMBOLS ▽=0 ▽=0	GENERAL TOLERANCES (UNLESS SPECIFIED)		DIMENSION STYLE MM ONLY		SCALE 8:1	DESIGN UNITS METRIC	THIRD ANGLE PROJECTION		
			mm	INCH	DRAWN BY WY. YANG	DATE 1993/04/15	TITLE .110 SLIP-ON RECEPTACLE			
		4 PLACES	±---	±---	CHECKED BY BK. CHOI	DATE 1993/04/15				
		3 PLACES	±---	±---	APPROVED BY CW. LEE	DATE 1993/04/15	MOLEX INCORPORATED DOCUMENT NO. SD-35711-08*0 SHEET NO. 1 OF 01			
2 PLACES	±---	±---	MATERIAL NO.							
1 PLACE	±0.30	±---	ANGULAR ±---°		SEE NOTE		DRAFT WHERE APPLICABLE MUST REMAIN WITHIN DIMENSIONS			

9 8 7 6 5 4 3 2 1