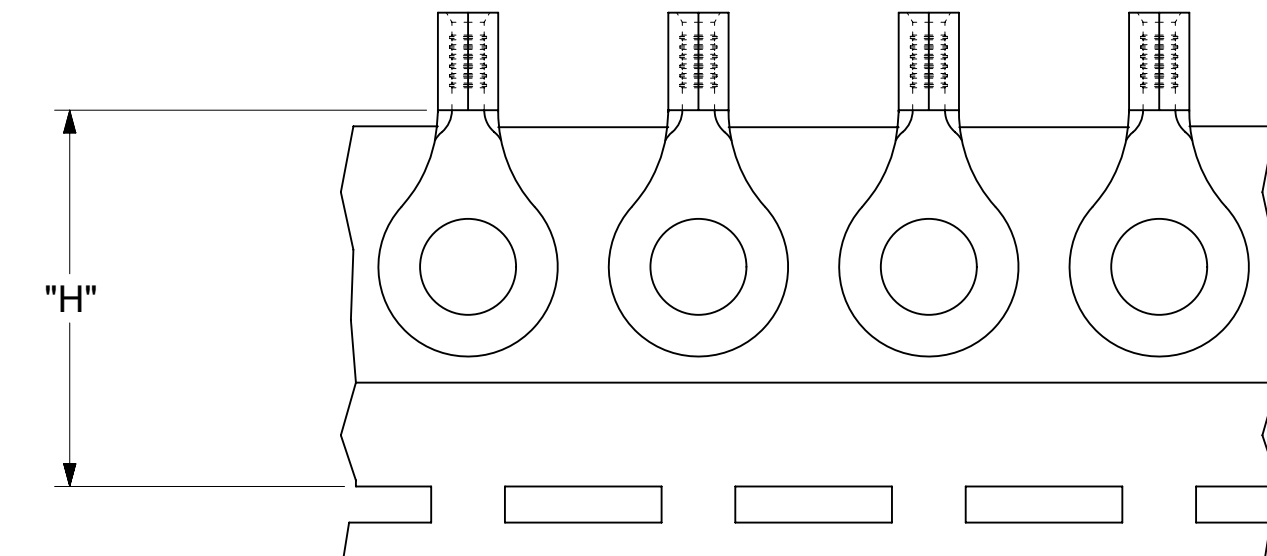
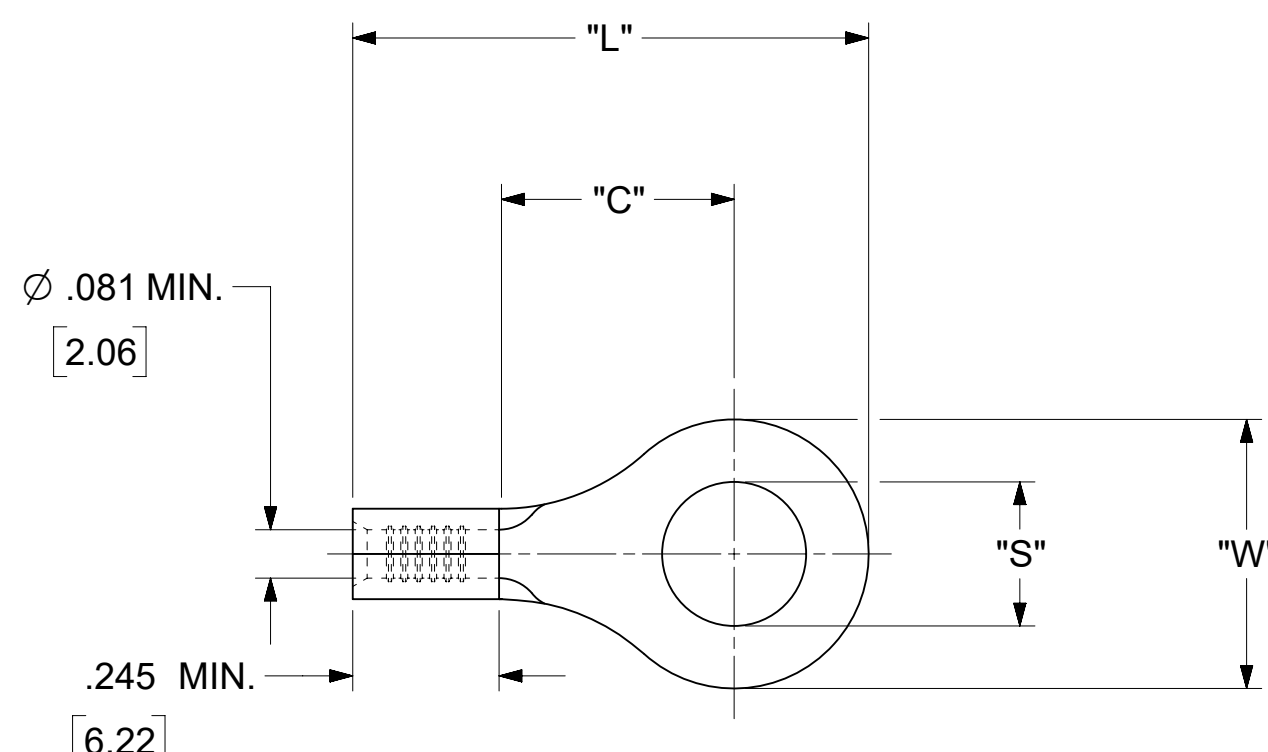


LOOSE PIECE		TAPE MOUNTED		SPECIFICATIONS					
MATERIAL NUMBER	ENGINEERING NUMBER	MATERIAL NUMBER	ENGINEERING NUMBER	STUD SIZE	"S" ±.005 [0.13]	"W" ±.010 [0.25]	"C" MIN.	"L" MAX.	"H"
190440143	B-118-10	---	---	10	.198 [5.03]	.534 [13.56]	.554 [14.07]	1.115 [28.32]	1.172 [29.77]
190440144	B-118-14	---	---	14	.265 [6.73]				
190440146	B-118-38	---	---	38	.390[9.91]				
190440148	B-118-56	---	---	56	.328 [8.33]				
190440150	B-123-04	---	---	4	.119 [3.02]	.250 [6.35]	.209 [5.31]	.639 [16.23]	.98 [24.89]
190440152	B-123-06	---	---	6	.146 [3.71]				
190440154	B-123-08	190440155	B-123-08T	8	.173 [4.39]				
190440156	B-125-10	---	---	10	.198 [5.03]	.467 [11.86]	.388 [9.86]	.916 [23.27]	.98 [24.89]
190440158	B-125-14	190440159	B-125-14T	14	.265 [6.73]				
190440160	B-125-56	---	---	56	.328 [8.33]				
190440028	B-137-04	---	---	4	.119 [3.02]	.312 [7.92]	.285 [7.24]	.730 [18.54]	.98 [24.89]
190440030	B-137-06	---	---	6	.146 [3.71]				
190440031	B-137-08	190440176	B-137-08T	6	.173 [4.39]				
190440032	B-137-10	190440177	B-137-10T	10	.198 [5.03]				
190440033	B-139-04	---	---	4	.119 [3.02]	.342 [8.69]	.310 [7.87]	.775 [19.69]	.98 [24.89]
190440035	B-139-06	---	---	6	.146 [3.71]				
190440037	B-139-08	---	---	8	.173 [4.39]				
190440039	B-139-10	---	---	10	.198 [5.03]				



PARTS ON TAPE

- NOTES:
1. MATERIAL: COPPER .031±.001 [0.79] THK.
  2. PLATING: ELECTRO-TIN (.0003 MIN).
  3. WIRE SIZE: 16-14 AWG  
1.0-2.5 MM<sup>2</sup>
  4. ALL DIMENSIONS IN INCHES/[MM].
  5. PARTS ARE ROHS COMPLIANT.
  6. DIMS. SHOWN ARE FOR REFERENCE ONLY.

THIS DRAWING CONTAINS INFORMATION THAT IS PROPRIETARY TO MOLEX ELECTRONIC TECHNOLOGIES, LLC AND SHOULD NOT BE USED WITHOUT WRITTEN PERMISSION													
DIMENSION UNITS <b>INCH/MM</b>		SCALE <b>NTS</b>		CURRENT REV DESC: OBSOLETE PART NUMBERS AS PER PCN#512131.				<b>molex</b>					
GENERAL TOLERANCES (UNLESS SPECIFIED)				EC NO: 727779		RING TONGUE TERMINAL KRIMPTITE 100-SERIES							
4 PLACES	±		±	DRWN: ANIKES1		2022/09/29		PRODUCT CUSTOMER DRAWING					
3 PLACES	±		± 0.005	CHK'D: GGA		2022/11/29							
2 PLACES	±	0.13	± 0.01	APPR: GGA		2022/11/29		DOCUMENT NUMBER <b>190440143</b>					
1 PLACE	±	0.25	±	INITIAL REVISION:						DOC TYPE <b>PSD</b>	DOC PART <b>000</b>	REVISION <b>A2</b>	
0 PLACES	±		±	DRWN: JJ		1984/10/15		MATERIAL NUMBER SEE TABLE		CUSTOMER GENERAL MARKET		SHEET NUMBER 1 OF 1	
ANGULAR TOL		± 0.5 °		APPR: JMACNEIL		2019/07/01							
DRAFT WHERE APPLICABLE MUST REMAIN WITHIN DIMENSIONS				THIRD ANGLE PROJECTION		DRAWING <b>C-SIZE</b>		SERIES <b>19044</b>					