

4

3

2

1

THIS DRAWING IS UNPUBLISHED. RELEASED FOR PUBLICATION
© COPYRIGHT ALL RIGHTS RESERVED.

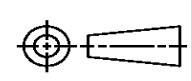
LOC	DIST	REVISIONS			
P	LTR	DESCRIPTION	DATE	DWN	APVD
	C1	ECR-14-003273	11MAR2014	GK	HMR

REPLACED BY OCEAN STYLE APPLICATOR PART NUMBER 2151413-1

FOR REPLACEMENT PARTS FOR APPLICATOR 1528595 REFER TO ADDITIONAL PAGE(S). SPARE PARTS KIT (IF LISTED) WILL REMAIN AVAILABLE.

THE REPLACEMENT OCEAN STYLE APPLICATOR HAS THE SAME TERMINATOR/PRESS INTERFACE AS APPLICATOR 1528595

THIS DRAWING IS A CONTROLLED DOCUMENT.		DWN	GOPALAKRISHNA HV														
DIMENSIONS:		CHK	RAGHAVENDRA														
TOLERANCES UNLESS OTHERWISE SPECIFIED:		APVD	RAGHAVENDRA														
<table border="0"> <tr><td>0 PLC</td><td>±</td></tr> <tr><td>1 PLC</td><td>±</td></tr> <tr><td>2 PLC</td><td>±</td></tr> <tr><td>3 PLC</td><td>±</td></tr> <tr><td>4 PLC</td><td>±</td></tr> <tr><td>ANGLES</td><td>±</td></tr> </table>		0 PLC	±	1 PLC	±	2 PLC	±	3 PLC	±	4 PLC	±	ANGLES	±	PRODUCT SPEC	NAME		
0 PLC	±																
1 PLC	±																
2 PLC	±																
3 PLC	±																
4 PLC	±																
ANGLES	±																
MATERIAL		APPLICATION SPEC	FINE ADJUST SIDE FEED HDI APPLICATOR														
FINISH		WEIGHT	SIZE	CAGE CODE	DRAWING NO												
			A3		©- 1528595												
		CUSTOMER ACCESSIBLE PRODUCTION DRAWING		SCALE	SHEET 1 OF 2 REV C1												



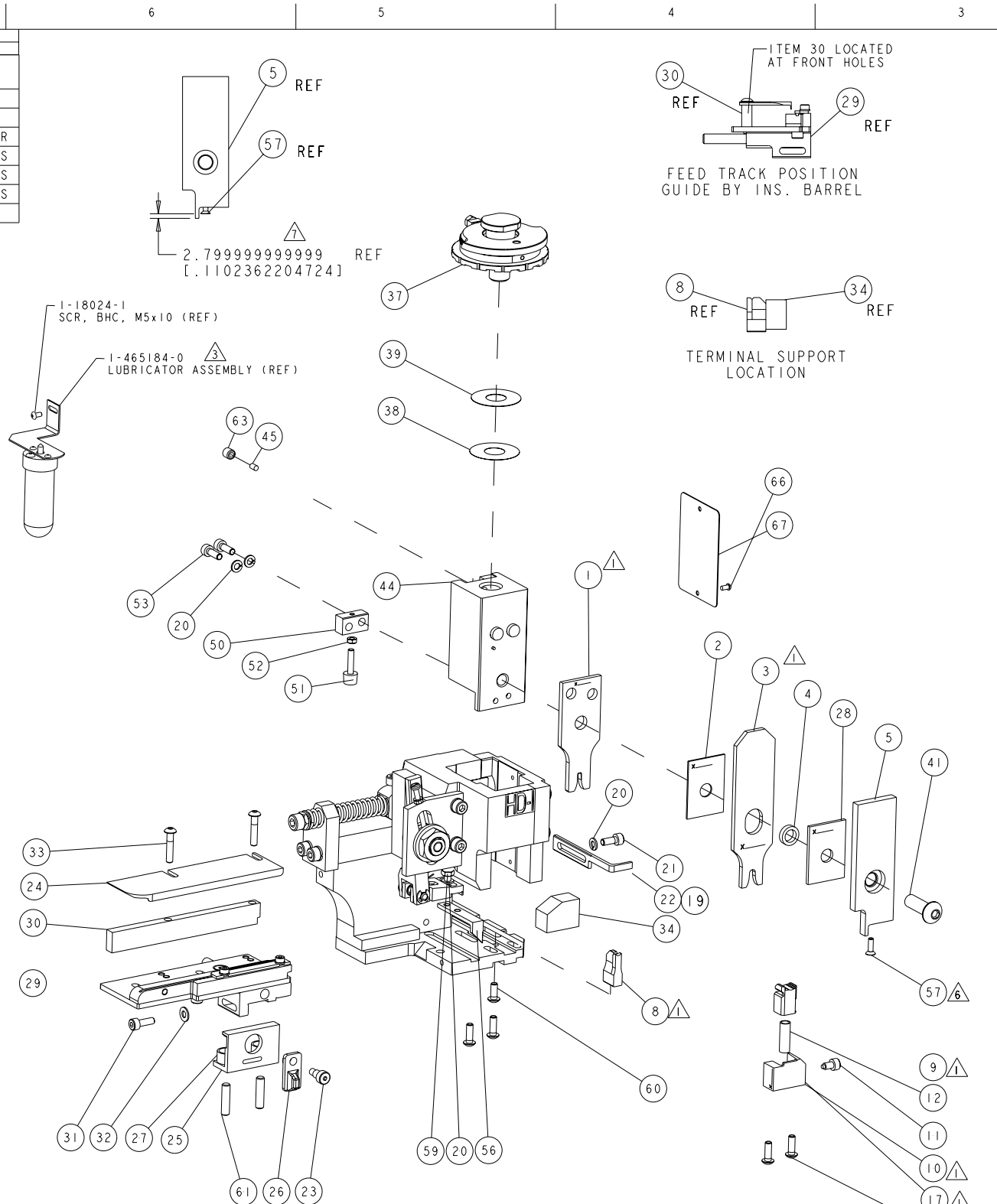
PART NUMBER	REV	TERMINATOR	FEED TYPE	DESCRIPTION
1528595-1	C	LEADMAKER	MECH POST FEED	CUTS CARRIER
1528595-2	C	BENCH	MECH PRE FEED	CUTS CARRIER
1528595-6	C	LEADMAKER	MECH POST FEED	CONTINUOUS CARRIER
7-1528595-1	C	LEADMAKER	MECH POST FEED	-1 AND SPARE PARTS
7-1528595-2	C	BENCH	MECH PRE FEED	-2 AND SPARE PARTS
7-1528595-6	C	LEADMAKER	MECH POST FEED	-6 AND SPARE PARTS
7-1528595-7	A	-	-	SPARE PARTS KIT

CRIMP	SIZE	TYPE	RANGE
WIRE	2.54 [1.100 IN]	F	1.50mm ² -2.50mm ²
INSUL	4.32 [1.170 IN]	O	3.40mm [1.134 IN]
WIRE STRIP LENGTH	4.70-5.50 [1.185-.216 IN]		APPL INSTRUCTIONS 408-8322 & 408-8490
TERMINAL APPL SPEC			FEED 11.99 [1.472 IN]

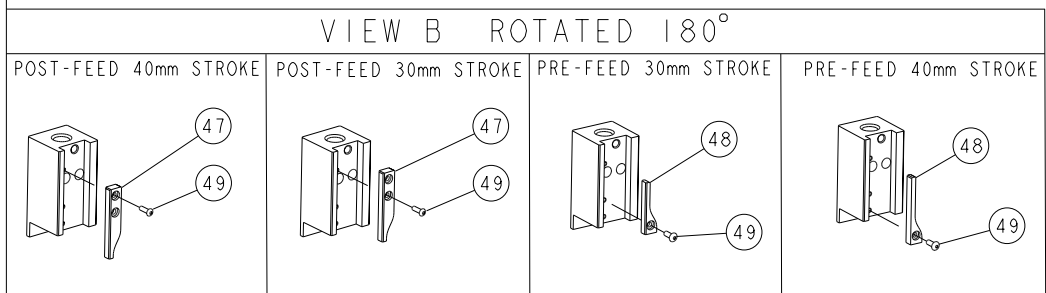
TE PN	MANUF'S PN	TE SEAL PN
1572888-1	I 928 498 055	828905-1
1572888-2	I 928 498 057	-
1572888-3	I 928 498 059	-
1572888-4	I 928 498 063	-
1572888-5	I 928 498 061	-

WIRE SIZE	CRIMP HEIGHT	REF SETTING
2.50mm ²	1.81 ± 0.05 [1.071 ± .002 IN]	B4
1.50mm ²	1.58 ± 0.05 [1.062 ± .002 IN]	D8

- △ RECOMMENDED SPARE PARTS.
- 2. GREASE RAM, CAM, CAM FOLLOWER AND FEED ROD LIGHTLY.
- △ CERTAIN TERMINALS REQUIRE LUBRICATION. REFER TO THE APPLICATOR INSTRUCTION SHEET FOR MORE INFORMATION.
- 4. LUBRICATE DAILY PER THE APPLICATOR INSTRUCTION SHEET SUPPLIED WITH THE APPLICATOR.
- △ ALL CRIMP DATA CALCULATED BY TYCO ELECTRONICS.
- △ THIS APPLICATOR APPLIES TERMINALS WITH A SEAL. INSULATION DIA QUOTED IS OUTSIDE DIAMETER OF SEAL. TERMINAL INSULATION RANGE QUOTED OF 2.2mm - 3.0mm.
- △ APPLY TORQ-SEAL IN ALLEN SOCKET TO FILL HOLE AFTER FLAT HD HAS BEEN ADJUSTED TO CORRECT HEIGHT AT QUALIFICATION. APPLY #1-23419-5 LOC-TITE TO THREADS.
- △ MINIMUM TENSILE VALUES FOR WIRE SIZES:
2.5MM = 190 N & 1.5MM = 135 N



*** WARNING**
ON INSTALLATION, SET WIRE DISC TO LARGEST WIRE SIZE SETTING. USE OF SETTINGS BELOW MIN. REQUIRED CRIMP HEIGHT SETTING WILL CAUSE DAMAGE TO CRIMP TOOLING.



QTY	PART NO	DESCRIPTION	ITEM NO
1	83		
1	82		
1	81		
1	80		
1	79		
1	78		
1	77		
1	76		
1	75		
1	74		
1	73		
1	72		
1	71		
1	70		
1	69		
1	68		
1	67		
1	66		
1	65		
1	64		
1	63		
1	62		
1	61		
1	60		
1	59		
1	58		
1	57		
1	56		
1	55		
1	54		
1	53		
1	52		
1	51		
1	50		
1	49		
1	48		
1	47		
1	46		
1	45		
1	44		
1	43		
1	42		
1	41		
1	40		
1	39		
1	38		
1	37		
1	36		
1	35		
1	34		
1	33		
1	32		
1	31		
1	30		
1	29		
1	28		
1	27		
1	26		
1	25		
1	24		
1	23		
1	22		
1	21		
1	20		
1	19		
1	18		
1	17		
1	16		
1	15		
1	14		
1	13		
1	12		
1	11		
1	10		
1	9		
1	8		
1	7		
1	6		
1	5		
1	4		
1	3		
1	2		
1	1		

SET UP GAGE 458637-3

REV	DATE	BY	APPD
1	27 JUL 2011	BH	BH

QTY	PART NO	DESCRIPTION	ITEM NO
1	73		
1	72		
1	71	DOCUMENTATION PACKAGE	
1	70		
1	69		
1	68		
1	67	PLATE, IDENTIFICATION	
1	66	SCREW, DRIVE	
1	65		
1	64		
1	63	SCR, SET, CUP POINT M6 X 6.0	
1	62		
1	61	SCR, SET, FLT POINT M5 X 20.0	
1	60	SCR, BTN SKT HD CAP (M4 X 10.0)	
1	59	SCR, HEX HD CAP M4 X 8.0	
1	58		
1	57	SCR, FLT SKT HD CAP M3 X 10.0	
1	56	PAWL, FEED	
1	55		
1	54	SCR, BTN SKT HD CAP (M4 X 12.0)	
1	53	SCR, SKT HD CAP M4 X 12.0	
1	52	NUT, HEX, REG M3	
1	51	BUMPER, HOLD DOWN	
1	50	SPACER, TONKER	
1	49	SCR, BTN SKT HD CAP (M3 X 10.0)	
1	48	CAM, UNIVERSAL PRE FEED	
1	47	CAM, UNIVERSAL POST-FEED	
1	46	APPLICATOR SUBASSEMBLY, HD1	
1	45	PLUG, NYLON	
1	44	RAM	
1	43		
1	42		
1	41	SCR, BTN SKT HD CAP (M8 X 25.0)	
1	40		
1	39	SHIM SUB-ASSY	
1	38	SHIM	
1	37	FINE ADJUST HEAD SUBASSY	
1	36		
1	35		
1	34	SUPPORT, TERMINAL	
1	33	SCR, BTN SKT HD CAP (M4 X 20.0)	
1	32	WASHER, FLAT, REG M4	
1	31	SCR, SKT HD CAP M4 X 12.0	
1	30	SPACER, STRIP GUIDE	
1	29	STRIP GUIDE ASSEMBLY	
1	28	SPACER, CRIMPER	
1	27	SPRING, COMPRESSION	
1	26	LEVER, DRAG RELEASE	
1	25	DRAG, TERMINAL	
1	24	PLATE, STRIP GUIDE	
1	23	SCR, SKT HD SHLDR 5.0 DIA X 6.0	
1	22	STRIPPER	
1	21	SCR, SKT HD CAP M4 X 10.0	
1	20	WASHER, SPRG LOCK, REG M4	
1	19	STRIPPER	
1	18		
1	17	HOLDER, SHEAR, NO-CUT	
1	16		
1	15		
1	14		
1	13		
1	12	SPRING, COMPRESSION	
1	11	STOP, SHEAR	
1	10	SHEAR HOLDER, FRONT, CUT	
1	9	FLOATING SHEAR, FRONT	
1	8	ANVIL, COMBINATION .100	
1	7		
1	6		
1	5	DEPRESSOR, SHEAR	
1	4	BLOCK, CRIMPER SPACER	
1	3	CRIMPER, INSUL O PREMIUM	
1	2	SPACER, CRIMPER	
1	1	CRIMPER, WIRE PREMIUM	