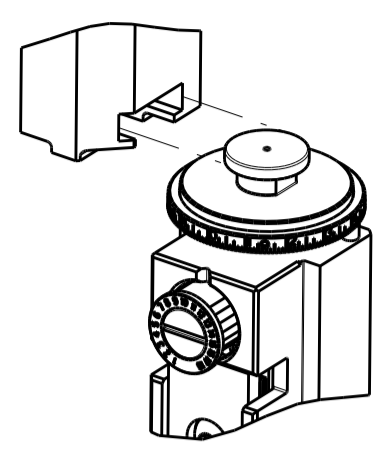
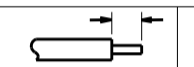




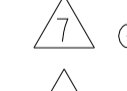

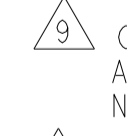



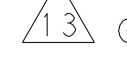


ATLANTIC VERSION TERMINATOR INTERFACE ADAPTER	PART NUMBER	REVISION	DESCRIPTION	FEED TYPE	APPLICATOR STYLE CONVERSION CHART						
					CONVERT TO	PART NUMBERS REQUIRED					
	2151868-1	B	FINE CRIMP HEIGHT ADJUST	MECHANICAL	PNEUMATIC FEED	2119950-1	1338685-1	5-18022-5	2119641-1	2119799-1	2063440-1
	2151868-2	B	FINE CRIMP HEIGHT ADJUST	PNEUMATIC	SERVO LATCH PLATE	2119951-1	-	8-2151868-5	1901094-3	2-1752354-1	2168400-6 (QUANTITY 2)
					SMART APPLICATOR	2161326-1	-	8-2151868-4	-	-	
					MECHANICAL FEED	2119949-1	1338685-1	5-18022-5	2119653-1	-	
	2151868-5	B	FINE CRIMP HEIGHT ADJUST	SERVO LATCH PLATE ⁴	SERVO LATCH PLATE	2119951-1	-	8-2151868-5	1901094-3	2-1752354-1	2168400-6 (QUANTITY 2)
					SMART APPLICATOR	2161326-1	-	8-2151868-4	-	-	
					MECHANICAL FEED	2119949-1	1338685-1	5-18022-5	2119653-1	-	
2151868-6	B	NON-CRIMP HEIGHT ADJUST	SERVO LATCH PLATE ⁴	PNEUMATIC FEED	2119950-1	1338685-1	5-18022-5	2119641-1	2119799-1	2063440-1	
				-	-	-	-	-	-		
2151868-7	B	FINE CRIMP HEIGHT ADJUST	NONE	-	-	-	-	-	-	-	
7-2151868-7	B	CRIMP TOOLING KIT	-	-	-	-	-	-	-	-	

APPLICATOR DATA		
CRIMP WIRE	SIZE	TYPE
1.65 mm [.065]		F
INSUL	2.20 mm [.087]	F
APPLICATOR INSTRUCTIONS 408-10389		

TERMINAL DATA: FORD/CARDELL TERMINAL FORD/CARDELL CRIMP SPECIFICATION			
TERMINAL NAME: BULLET TYPE MALE TERMINAL			
WIRE STRIP LENGTH		INSULATION DIAMETER RANGE	
4.63-5.38 mm [.182-.212 IN]		Ø1.10-1.40 mm [.043-.055 IN]	
TERMINAL APPLICATION SPECIFICATION	NONE Rev -	-	-
TERMINALS APPLIED			
TE TERMINAL	FORD/CARDELL TERMINAL	TE TERMINAL	FORD/CARDELL TERMINAL
2113316-1	E7FB-14461-BA	2113316-3	SF9T-14461-AA
2113316-2	F6TB-14461-BB	2113316-4	33093-0001 MOLEX

WIRE SIZE	CRIMP HEIGHT mm [INCH]	CRIMP HEIGHT REFERENCE SETTING
0.50mm ²	1.05 +/- 0.05 [.041 +/- .002]	6.8

-  RECOMMENDED SPARE PARTS
-  GREASE BEARING SURFACES LIGHTLY
- 3. LUBRICATE DAILY PER THE APPLICATOR INSTRUCTION SHEET SUPPLIED WITH THE APPLICATOR.
-  APPLICATOR SPECIFIC DATA TO BE ENTERED INTO BLANK MEMORY CHIP AT ASSEMBLY. SEE BELOW FOR PART NUMBER:
 MECHANICAL FEED WITH "SMART APPLICATOR" CONVERSION: 8-2151868-4
 PNEUMATIC FEED WITH "SMART APPLICATOR" CONVERSION: 8-2151868-4
 SERVO FEED WITH "FINE CRIMP HEIGHT ADJUST": 8-2151868-5
 SERVO FEED WITH "NON-CRIMP HEIGHT ADJUST": 8-2151868-6
- 5. ADJUSTMENT OF THE STRIPPER MAY BE REQUIRED WHEN MOVING THE APPLICATOR BETWEEN BENCH AND LEADMAKER APPLICATIONS.
-  APPLY PART NUMBER 1-23419-5 LOCTITE TO THREADS OF ITEMS 62, 180 & 242. FOR -6 ONLY APPLY PART NUMBER 1-23419-5 LOCTITE TO THREADS OF ITEMS 37, 180 & 242.
-  GREASE THREADS, GROOVE AND O-RING ON ITEMS 35 & 252.
-  MAGNET, ITEM 166 MUST BE ORIENTED CORRECTLY IN ORDER TO PROPERLY ACTUATE THE COUNTER.
-  CRIMP HEIGHT REFERENCE SETTING WAS THE SETTING USED WHEN THE APPLICATOR WAS QUALIFIED AT THE FACTORY. ADJUSTMENT MAY BE NECESSARY WHEN RUNNING APPLICATOR IN THE FIELD.
-  SPARE FEED CAM STORAGE LOCATION REFER TO INSTRUCTION SHEET FOR ADDITIONAL INFORMATION.
-  TO CONVERT THE APPLICATOR TO A NON-CARRIER CUTTING STYLE, REMOVE ITEM 13 AND ATTACH TO THE LOCATION ON THE BACK SIDE OF THE HOUSING. REFER TO INSTRUCTION SHEET FOR ADDITIONAL INFORMATION.
-  WHEN ASSEMBLING A NON CRIMP HEIGHT ADJUST APPLICATOR (-6) USE SHIMS FROM ITEM 260 TO ACHIEVE A NOMINAL SHIM HEIGHT OF 4.75.
-  GRIND AT ASSEMBLY.

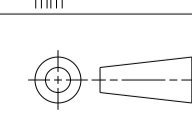
***WARNING**
 ON INSTALLATION, SET WIRE DISC, ITEM 40 TO LARGEST WIRE SIZE SETTING. USE OF SETTINGS BELOW MINIMUM REQUIRED CRIMP HEIGHT SETTING WILL CAUSE DAMAGE TO CRIMP TOOLING.

-77	-7	-6	-5	-2	-1	PART NO	DESCRIPTION	ITEM NO
-	-	1	-	-	-	2119957-2	APPLICATOR SHIM PACK	260
-	1	-	1	1	1	8-21084-0	O-RING, .676 ID, .070 DIA. MAT.	252

ATLANTIC VERSION
 Shown on sheets 1 of 4 & 2 of 4
 (Pacific version shown on sheets 3 of 4 & 4 of 4)

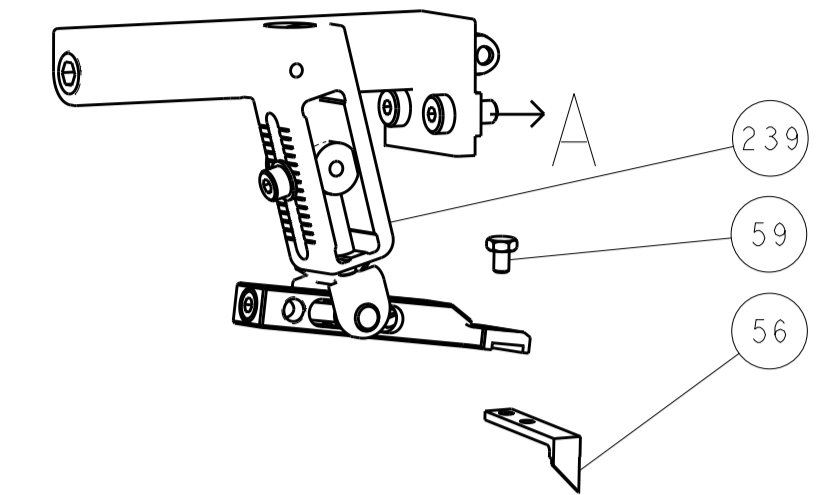
LOC	DIST	REV	DATE	BY	APPV
A	66	1	05FEB2013	GH	TE
A		2	06MAR2013	GH	TE
B		3	21JUN2013	BH	GB
B1		4	11JUL2013	BH	BH

REV	DATE	BY	APPV	DESCRIPTION	ITEM NO		
-	-	-	-	1 - 2119640-1	PUSH ROD, AIR FEED	250	
-	-	-	-	1 - 2079988-1	BUSHING, LCH5-12, MISUMI	249	
-	-	-	-	1 - 2119641-1	FEED CAM, AIR FEED	248	
-	1	-	1	1 - 2119798-1	DETENT PIN	247	
-	1	-	1	1 - 22279-3	SPRING, COMPRESSION	246	
-	-	1	-	1 - 2119758-1	RAM, AMP STYLE, SIDE FEED, NON-ADJ.	245	
-	1	1	1	1 - 2119082-8	CAM, SNAIL, INSULATION ADJUSTMENT	244	
-	1	1	1	1 - 2079764-1	WASHER, WAVE SPRING, CREST-TO-CREST	243	
-	1	1	1	1 - 2119083-1	RETAINER, INSULATION DIAL	242	
-	1	1	1	1 - 7-18023-7	SCR, SKT HD CAP M3 X 4.0	241	
-	-	2	2	-	SHCS, LOW HEAD, RoHS, M5 X 16	240	
-	-	-	-	1 - 2119580-1	MECHANICAL FEED ASSEMBLY	239	
-	-	-	-	1 - 2063440-1	AIR FEED MODULE	238	
-	-	1	-	1 - 2119740-2	TAG, IDENTIFICATION	213	
-	-	1	1	-	1901094-3	SPACER, FEEDER	198
-	-	-	2	-	21045-3	RING, RETAIN, EXTERN, 3/16 CRESCENT	172
-	1	1	1	1	994969-1	MAGNET, RARE EARTH HIGH ENERGY	166
-	REF	REF	REF	REF	994970-2	COUNTER, MAGNETIC	164
-	-	-	-	1 - 240638-1	SPRING, FEED FINGER	163	
-	-	-	-	1 - 3-23627-7	PIN, RETAIN, GRVD, 3/16 X .854	137	
-	-	-	-	1 - 2119799-1	HOLDER, FEED FINGER, AF	136	
-	-	REF	REF	-	SEE NOTE 4	MEMORY CHIP, PROGRAMMED	135
-	-	1	1	-	1633743-1	SERVO FEED LATCH ASM	133
-	1	1	1	1	1-18028-2	WASHER, FLAT, REG M4	119
-	-	REF	REF	-	2119944-1	FEED FINGER ASSEMBLY, SF	117
-	1	1	1	1	1 - 455888-5	SPACER, CRIMPER	82
-	1	1	1	1	1 - 2119956-1	DOCUMENTATION PACKAGE	71
-	1	-	-	1	1 - 2119740-1	TAG, IDENTIFICATION	67
-	2	2	2	2	2 - 2168078-1	SCREW, DRIVE, RH, RoHS, 2 x .188	66
-	1	-	-	1	1 - 2119793-1	LIMITER, ADJUSTMENT BOLT	63
-	3	-	-	3	3 - 992763-5	SCR, SET, SOC, CONE POINT, M3 x 4.0	62
-	1	1	1	1	1 - 2079383-4	SCR, BHSC, RoHS (M4 X 8)	60
-	-	-	-	1	1 - 5-18022-5	SCR, HEX HD CAP, M4 X 6.0	59
-	-	-	-	1	1 - 1338685-1	PAWL, FEED	56
-	4	4	4	4	4 - 2168400-1	SHCS, LOW HEAD, RoHS, M4 X 12	54
-	2	2	2	2	2 - 2168083-9	SCR, SKT HD CAP, RoHS, M4 X 20	53
-	1	1	1	1	1 - 5018030-1	NUT, HEX, REG, RoHS, M3	52
-	1	1	1	1	1 - 811242-5	BUMPER, HOLD DOWN	51
-	1	1	1	1	1 - 690753-2	SPACER, TONKER	50
-	-	-	-	1	2 - 18023-9	SCR, SKT HD CAP M4 X 6.0	49
-	-	-	-	1	1 - 2119652-1	FEED CAM, PRE FEED	48
-	-	-	-	1	1 - 2119653-1	FEED CAM, POST FEED	47
-	1	1	1	1	1 - 2119656-9	APPLICATOR BASIC ASSEMBLY, SF	46
-	1	-	-	1	1 - 2119370-1	RAM, AMP STYLE, SIDE FEED	44
-	1	1	1	1	1 - 2079383-7	SCR, BHSC, RoHS (M8 X 25)	41
-	1	-	-	1	1 - 2119645-1	DISC, NUMBERED FA WIRE ADJUSTMENT	40
-	1	-	-	1	1 - 2119957-1	APPLICATOR SHIM PACK	39
-	1	1	1	1	1 - 2119644-1	RAM WASHER, PRECISION	38
-	1	1	1	1	1 - 2119085-1	FA HEAD, ATLANTIC STYLE	37
-	1	-	-	1	1 - 2119092-1	BOLT, ADJUSTMENT	35
-	1	1	1	1	1 - 1752356-1	SUPPORT, TERMINAL	34
-	2	2	2	2	2 - 2079383-5	SCR, BHSC, RoHS (M4 X 20)	33
-	1	1	1	1	1 - 2161328-1	HEX HEAD, FLANGED, M5 x 8mm LONG	32
-	1	1	1	1	1 - 1320908-3	SPACER, STRIP GUIDE	30
-	1	1	1	1	1 - 2119959-1	ASSEMBLY, STRIP GUIDE	29
-	1	1	1	1	1 - 1-455888-0	SPACER, CRIMPER	28
-	1	1	1	1	1 - 1320928-6	STRIP GUIDE	24
-	1	1	1	1	1 - 2168083-2	SCR, SKT HD CAP, RoHS, M4 X 8.0	21
-	1	1	1	1	1 - 1-18028-2	WASHER, FLAT, REG M4	20
-	1	1	1	1	1 - 2119533-1	STRIPPER, SIDE FEED	19
-	1	1	1	1	1 - 2119806-1	INSERT, SHEAR	13
-	1	1	1	1	1 - 3-22280-3	SPRING, COMPRESSION	12
-	1	1	1	1	1 - 1-356885-4	STOP, SHEAR	11
-	1	1	1	1	1 - 2119805-1	SHEAR HOLDER, FRONT	10
-	1	1	1	1	1 - 462006-6	FLOATING SHEAR, FRONT	9
-	1	1	1	1	1 - 1-1633928-8	ANVIL, COMBINATION	8
-	1	1	1	1	1 - 5-240641-6	SPACER	7
-	-	-	-	-	-	-	6
-	1	1	1	1	1 - 2119757-8	DEPRESSOR, SHEAR	5
-	1	1	1	1	1 - 1-238011-9	BLOCK, CRIMPER SPACER	4
-	1	1	1	1	1 - 6-2119582-9	CRIMPER, INSULATION F PREMIUM	3
-	-	-	-	-	-	-	2
-	1	1	1	1	1 - 4-1633730-5	CRIMPER, WIRE	1

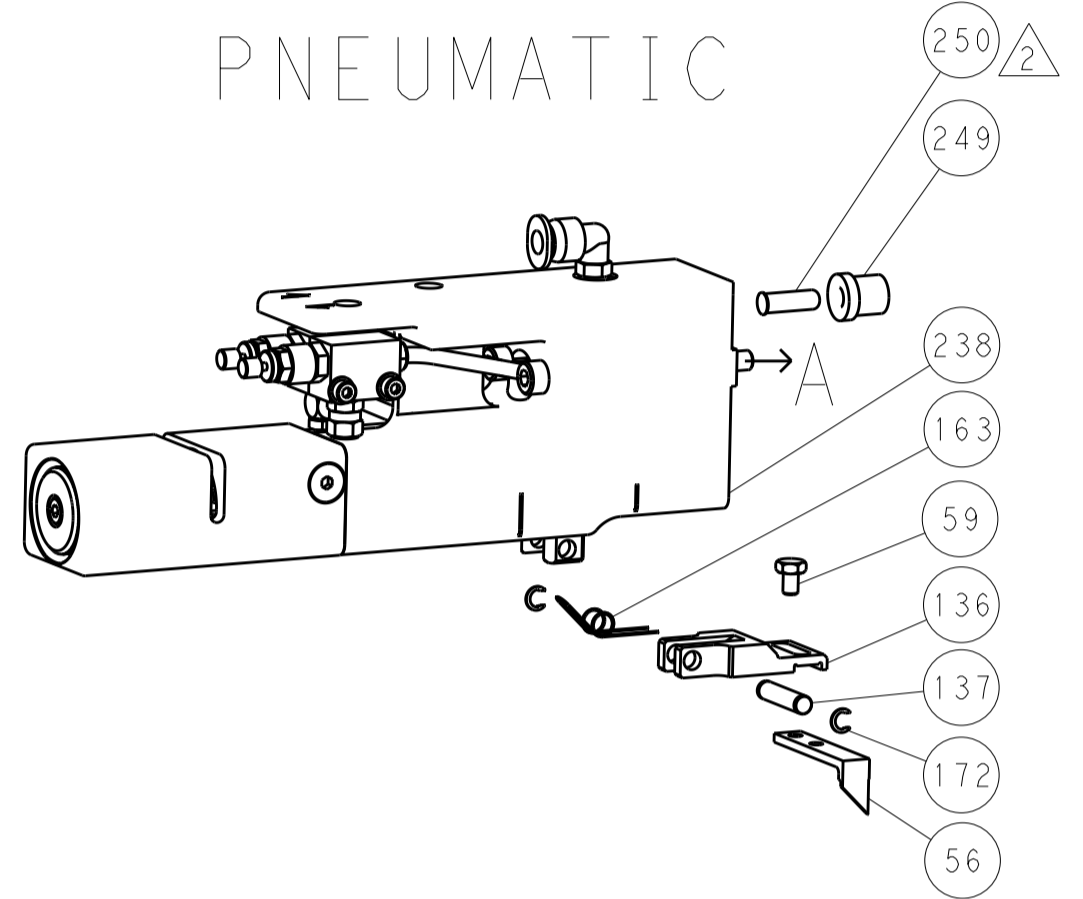
DIMENSIONS: mm 	TOLERANCES UNLESS OTHERWISE SPECIFIED: 0 PLC ±.1 1 PLC ±0.1 2 PLC ±0.02 3 PLC ±0.005 4 PLC ±0.0005 ANGLES ±.1	FINISH: - - - -	WEIGHT: - - - -	CUSTOMER ACCESSIBLE PRODUCTION DRAWING SCALE: 1:1 SHEET 1 OF 4 REV: B1
--	---	-----------------------------	-----------------------------	---

LOC		DIST		REVISIONS			
A	66	P	LTM	DESCRIPTION	DATE	OWN	APVD
		-	-	SEE SHEET 1	-	-	-

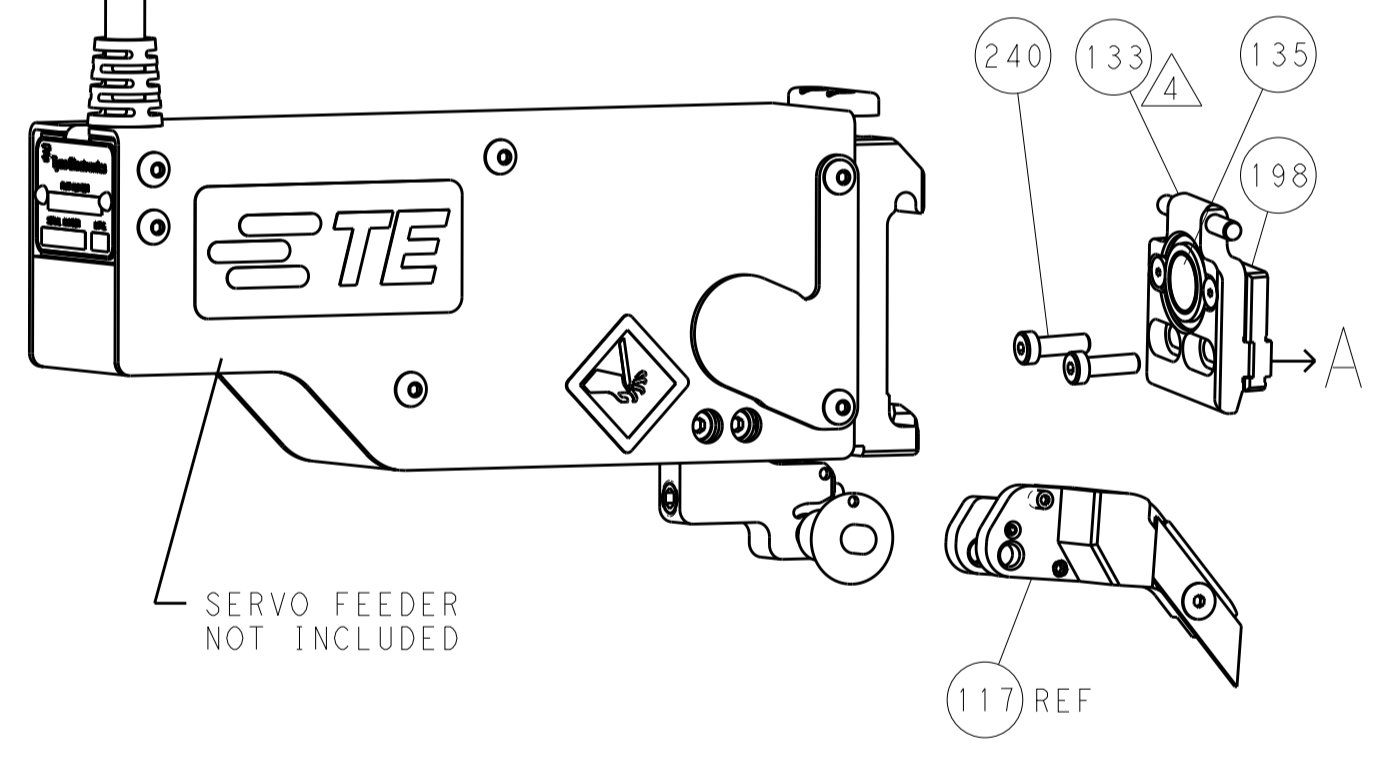
FEED TYPE MECHANICAL



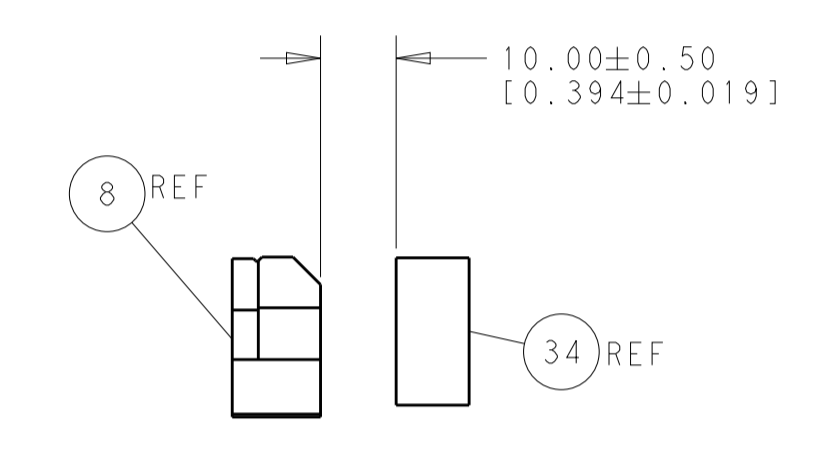
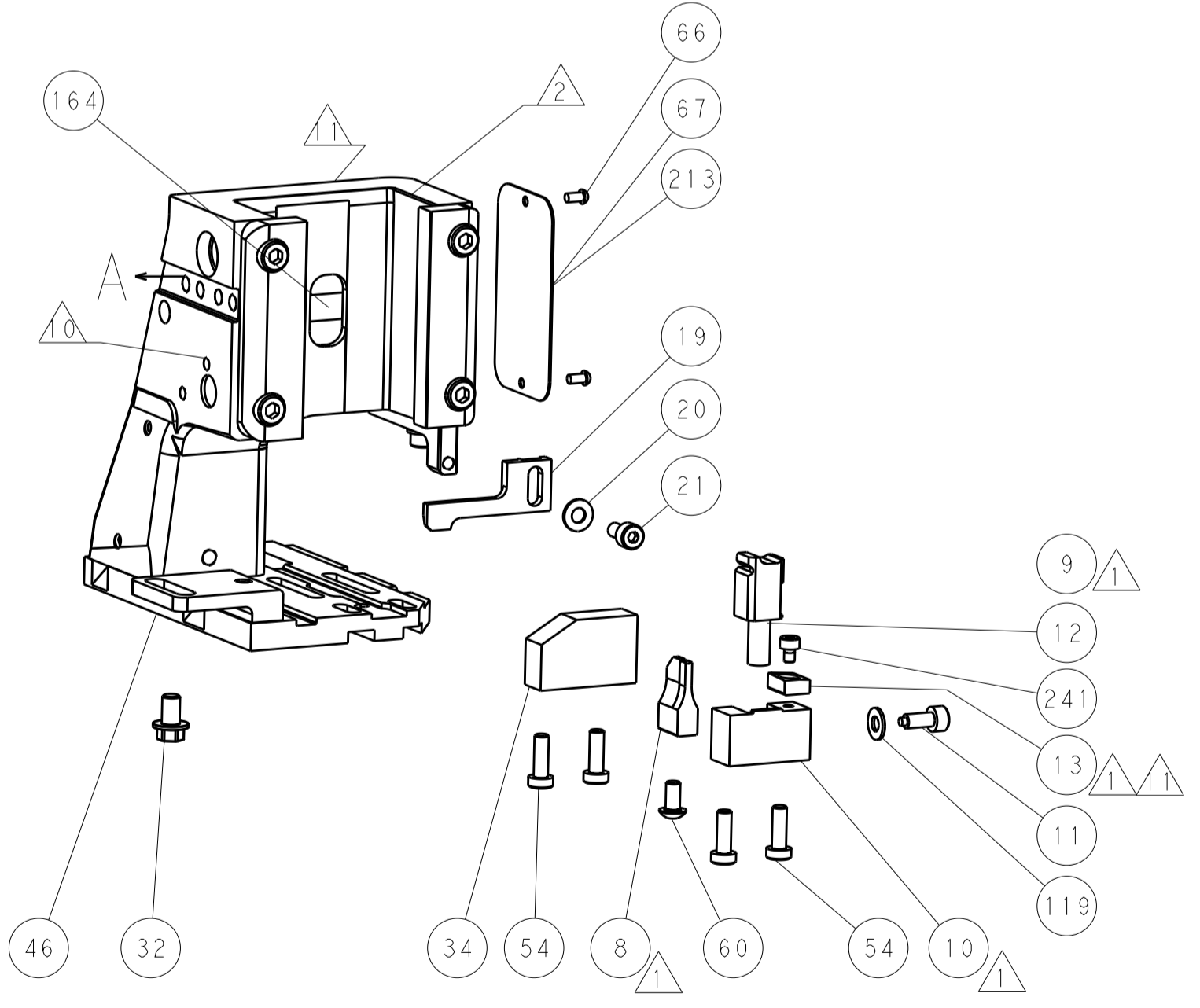
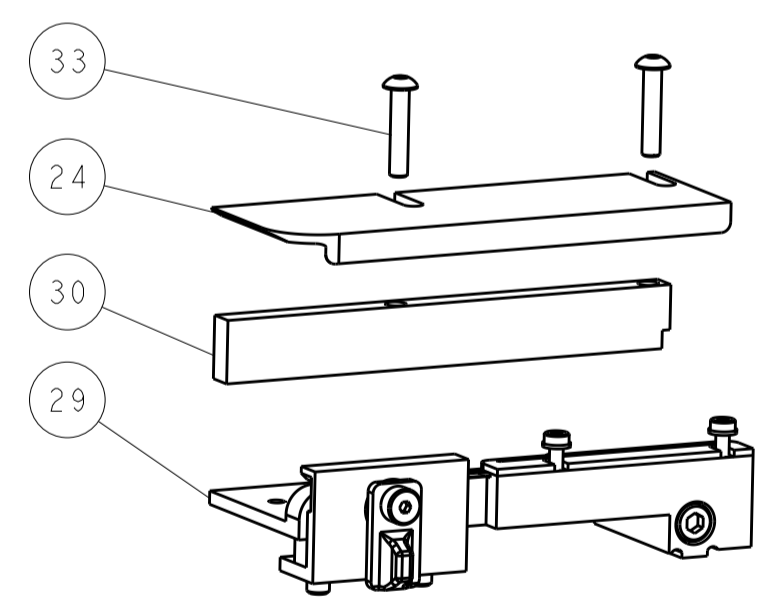
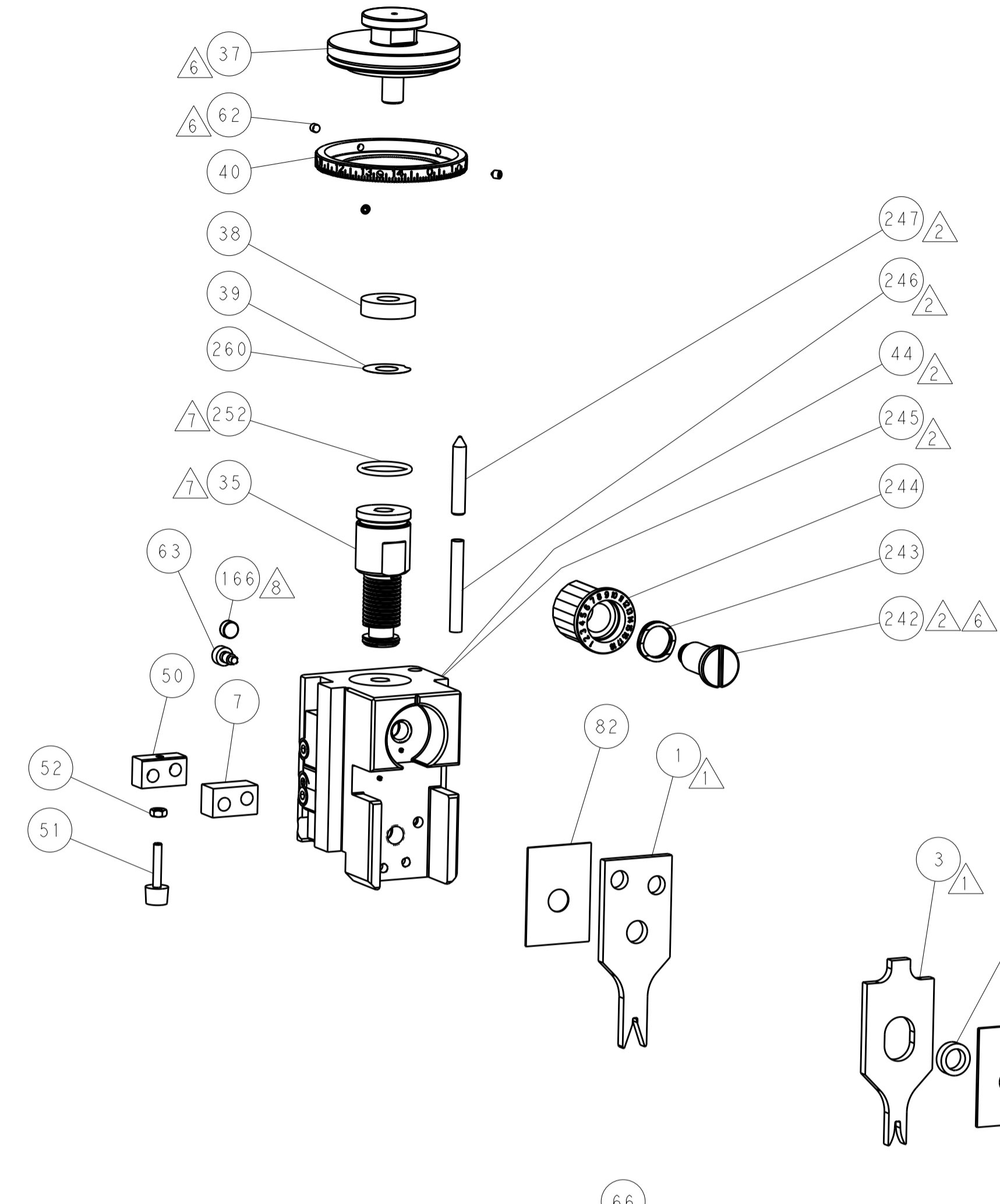
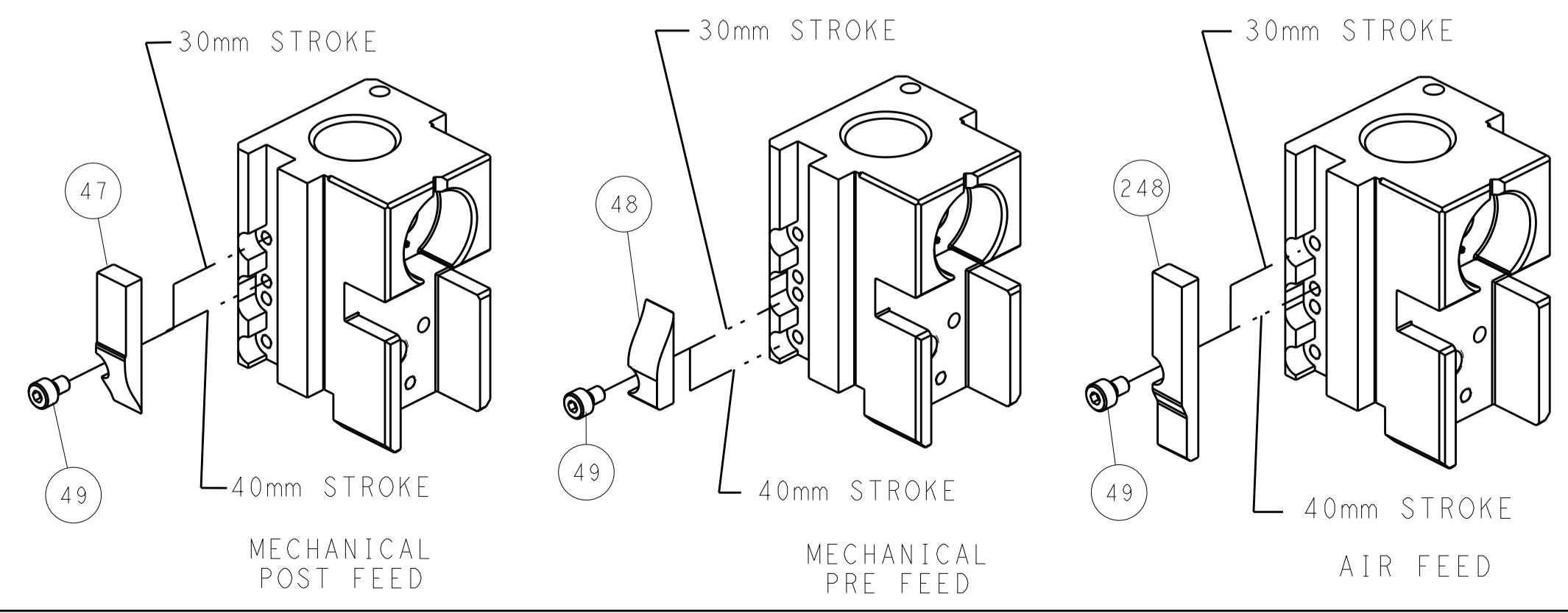
PNEUMATIC



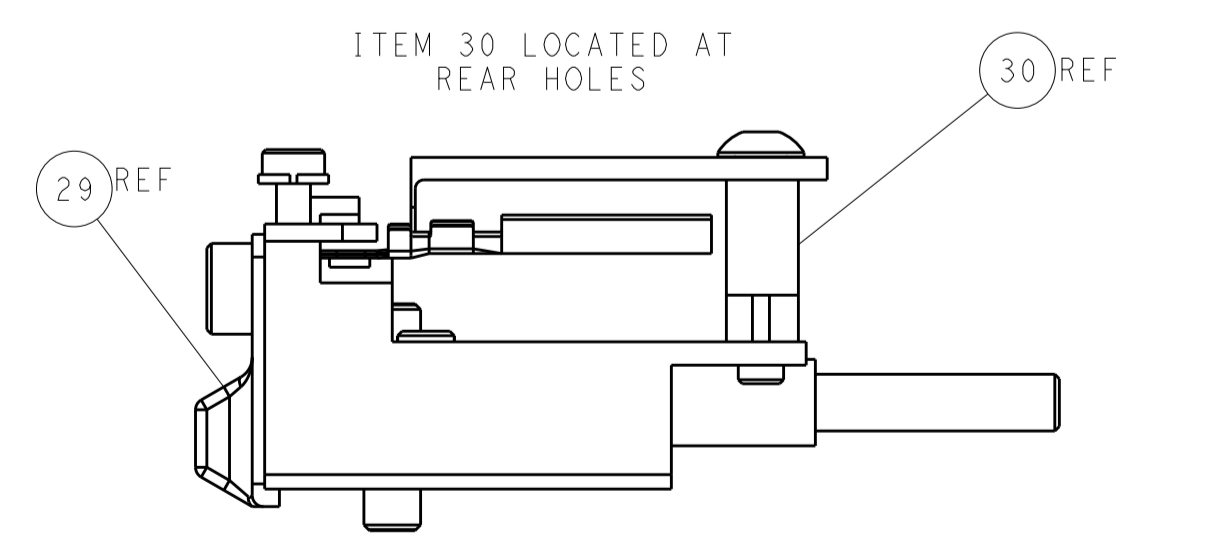
SERVO LATCH PLATE



CAM POSITIONS



TERMINAL SUPPORT LOCATION



ITEM 30 LOCATED AT REAR HOLES

FEED TRACK POSITION GUIDE BY INSULATION BARREL

ATLANTIC VERSION
 Shown on sheets 1 of 4 & 2 of 4
 (Pacific version shown on sheets 3 of 4 & 4 of 4)

DIMENSIONS:		TOLERANCES UNLESS OTHERWISE SPECIFIED:		OWN: HOFFNER 05FEB2013		TE Connectivity	
mm	0 PLC ±0.1	1 PLC ±0.1	2 PLC ±0.02	3 PLC ±0.005	4 PLC ±0.0005	CHG: T. ELBIN 06FEB2013	Harrisburg, PA 17105-3608
MATERIAL:		FINISH:		APVD: T. ELBIN 06FEB2013		NAME: Ocean Side Feed Applicator	
				PRODUCT SPEC:		RESTRICTED TO:	
				APPLICATION SPEC:		SIZE: CAGE CODE: DRAWING NO:	
				WEIGHT:		A11 00779 ©=2151868	
				Customer Accessible Production Drawing		SCALE: 1:1 SHEET 2 OF 4 REV: B1	

PACIFIC VERSION TERMINATOR INTERFACE ADAPTER	PART NUMBER	REVISION	DESCRIPTION	FEED TYPE	APPLICATOR STYLE CONVERSION CHART						
					CONVERT TO	PART NUMBERS REQUIRED					
	2-2151868-1	B	FINE CRIMP HEIGHT ADJUST	MECHANICAL	PNEUMATIC FEED	2119950-1	1338685-1	5-18022-5	2119641-2	2119799-1	2063440-1
					SERVO LATCH PLATE	2119951-1	-	8-2151868-5	1901094-3	2-1752354-1	2168400-6 (QUANTITY 2)
	2-2151868-2	B	FINE CRIMP HEIGHT ADJUST	PNEUMATIC	MECHANICAL FEED	2119949-1	1338685-1	5-18022-5	2119653-2	-	-
					SERVO LATCH PLATE	2119951-1	-	8-2151868-5	1901094-3	2-1752354-1	2168400-6 (QUANTITY 2)
2-2151868-5	B	FINE CRIMP HEIGHT ADJUST	SERVO LATCH PLATE	MECHANICAL FEED	2119949-1	1338685-1	5-18022-5	2119653-2	-	-	
2-2151868-7	B	FINE CRIMP HEIGHT ADJUST	NONE	PNEUMATIC FEED	2119950-1	1338685-1	5-18022-5	2119641-2	2119799-1	2063440-1	
7-2151868-7	B	CRIMP TOOLING KIT	-	-	-	-	-	-	-	-	

APPLICATOR DATA		
CRIMP WIRE	SIZE	TYPE
INSUL	1.65 mm [.065]	F
	2.20 mm [.087]	F
APPLICATOR INSTRUCTIONS 408-10389		

TERMINAL DATA: FORD/CARDELL TERMINAL FORD/CARDELL CRIMP SPECIFICATION			
TERMINAL NAME: BULLET TYPE MALE TERMINAL			
WIRE STRIP LENGTH		INSULATION DIAMETER RANGE	
4.63-5.38 mm [1.82-.212 IN]		Ø1.10-1.40 mm [1.043-.055 IN]	
TERMINAL APPLICATION SPECIFICATION	NONE Rev -	-	-
TERMINALS APPLIED			
TE TERMINAL	FORD/CARDELL TERMINAL	TE TERMINAL	FORD/CARDELL TERMINAL
2113316-1	ETFB-14461-BA	2113316-3	SF9T-14461-AA
2113316-2	F6TB-14461-BB	2113316-4	33093-0001 MOLEX

WIRE SIZE		CRIMP HEIGHT mm [INCH]	CRIMP HEIGHT REFERENCE SETTING
0.50mm2		1.05+/-0.05 [1.041+/-0.02]	6.8



- RECOMMENDED SPARE PARTS
- GREASE BEARING SURFACES LIGHTLY
- LUBRICATE DAILY PER THE APPLICATOR INSTRUCTION SHEET SUPPLIED WITH THE APPLICATOR.
- APPLICATOR SPECIFIC DATA TO BE ENTERED INTO BLANK MEMORY CHIP AT ASSEMBLY. SEE BELOW FOR PART NUMBER:
 MECHANICAL FEED WITH "SMART APPLICATOR" CONVERSION: 8-2151868-4
 PNEUMATIC FEED WITH "SMART APPLICATOR" CONVERSION: 8-2151868-4
 SERVO FEED WITH "FINE CRIMP HEIGHT ADJUST": 8-2151868-5
- ADJUSTMENT OF THE STRIPPER MAY BE REQUIRED WHEN MOVING THE APPLICATOR BETWEEN BENCH AND LEADMAKER APPLICATIONS.
- APPLY PART NUMBER 1-23419-5 LOCTITE TO THREADS OF ITEMS 62, 180 & 242.
- GREASE THREADS, GROOVE AND O-RING ON ITEMS 139 & 152.
- MAGNET MUST BE ORIENTED CORRECTLY IN ORDER TO PROPERLY ACTUATE THE COUNTER.
- CRIMP HEIGHT REFERENCE SETTING WAS THE SETTING USED WHEN THE APPLICATOR WAS QUALIFIED AT THE FACTORY. ADJUSTMENT MAY BE NECESSARY WHEN RUNNING APPLICATOR IN THE FIELD.
- SPARE FEED CAM STORAGE LOCATION REFER TO INSTRUCTION SHEET FOR ADDITIONAL INFORMATION.
- TO CONVERT THE APPLICATOR TO A NON-CARRIER CUTTING STYLE, REMOVE ITEM 13 AND ATTACH TO THE LOCATION ON BACK SIDE OF THE HOUSING. REFER TO INSTRUCTION SHEET FOR ADDITIONAL INFORMATION.
- GRIND AT ASSEMBLY.

***WARNING**
 ON INSTALLATION, SET WIRE DISC, ITEM 40 TO LARGEST WIRE SIZE SETTING. USE OF SETTINGS BELOW MINIMUM REQUIRED CRIMP HEIGHT SETTING WILL CAUSE DAMAGE TO CRIMP TOOLING.

PACIFIC VERSION
 Shown on sheets 3 of 4 & 4 of 4
 (Atlantic version shown on sheets 1 of 4 & 2 of 4)

SET UP GAUGE 2119599-1	LOC A	DIST 66	REVISIONS			
			REV	DATE	BY	APPD
			-	SEE SHEET 1	-	-

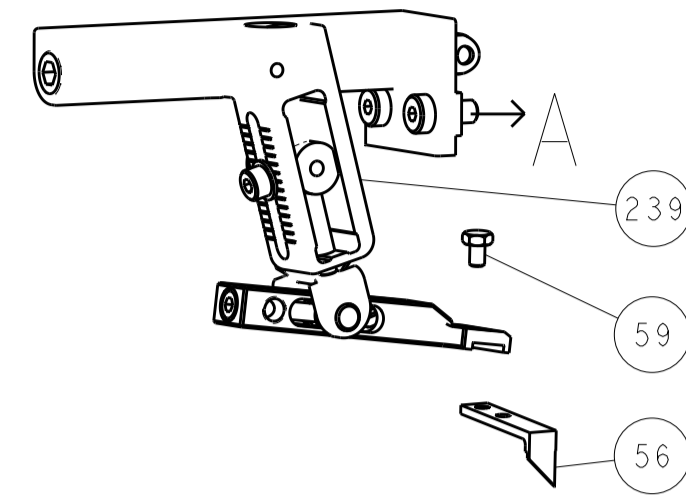
-	1	1	1	1	2119782-1	FINE ADJUST HEAD ASM, PACIFIC STYLE	251
-	-	-	1	-	2119640-1	PUSH ROD, AIR FEED	250
-	-	-	1	-	2079988-1	BUSHING, LCH5-12, MISUMI	249
-	1	1	1	1	1-22279-3	SPRING, COMPRESSION	246
-	1	1	1	1	2119082-8	CAM, SNAIL, INSULATION ADJUSTMENT	244
-	1	1	1	1	2079764-1	WASHER, WAVE SPRING, CREST-TO-CREST	243
-	1	1	1	1	2119083-1	RETAINER, INSULATION DIAL	242
-	1	1	1	1	7-18023-7	SCR, SKT HD CAP M3 X 4.0	241
-	-	2	-	-	2168400-6	SHCS, LOW HEAD, RoHS, M5 X 16	240
-	-	-	-	1	2119580-1	MECHANICAL FEED ASSEMBLY	239
-	-	-	-	1	2063440-1	AIR FEED MODULE	238
-	-	1	-	-	2119740-2	TAG, IDENTIFICATION	213
-	-	1	-	-	1901094-3	SPACER, FEEDER	198
-	-	-	2	-	21045-3	RING, RETAIN, EXTERN, 3/16 CRESCENT	172
-	1	1	1	1	994969-1	MAGNET, RARE EARTH HIGH ENERGY	166
-	REF	REF	REF	REF	994970-2	COUNTER, MAGNETIC	164
-	-	-	1	-	240638-1	SPRING, FEED FINGER	163
-	1	1	1	1	8-21084-1	O-RING, .801 ID, .070 DIA, MAT.	152
-	-	-	1	-	2119641-2	FEED CAM, AIR FEED	151
-	1	1	1	1	2119798-2	DETENT PIN	145
-	1	1	1	1	2079383-8	SCR, BHSC, RoHS (M4 X 16)	144
-	4	4	4	4	2168400-5	SHCS, LOW HEAD, RoHS, M4 X 20	143
-	-	-	-	1	2119653-2	FEED CAM, POST FEED	142
-	1	1	1	1	1-2119656-0	APPLICATOR BASIC ASSEMBLY, SF	141
-	1	1	1	1	2119650-1	RAM, ASIAN STYLE, SIDE FEED	140
-	1	1	1	1	2119092-2	BOLT, ADJUSTMENT	139
-	-	-	1	-	3-23627-7	PIN, RETAIN, GRVD, 3/16 X .854	137
-	-	-	1	-	2119799-1	HOLDER, FEED FINGER, AF	136
-	-	REF	-	-	SEE NOTE 4	MEMORY CHIP, PROGRAMMED	135
-	-	1	-	-	1633743-1	SERVO FEED LATCH ASM	133
-	1	1	1	1	1-18028-2	WASHER, FLAT, REG M4	119
-	-	REF	-	-	2119944-1	FEED FINGER ASSEMBLY, SF	117
-	1	1	1	1	455888-5	SPACER, CRIMPER	82
-	1	1	1	1	2119956-1	DOCUMENTATION PACKAGE	71
-	1	-	1	1	2119740-1	TAG, IDENTIFICATION	67
-	2	2	2	2	2168078-1	SCREW, DRIVE, RH, RoHS, 2 x .188	66
-	1	1	1	1	2119793-1	LIMITER, ADJUSTMENT BOLT	63
-	3	3	3	3	992763-5	SCR, SET, SOC, CONE POINT, M3 X 4.0	62
-	-	-	1	1	5-18022-5	SCR, HEX HD CAP, M4 X 6.0	59
-	-	-	1	1	1338685-1	PAWL, FEED	56
-	2	2	2	2	2168083-9	SCR, SKT HD CAP, RoHS, M4 X 20	53
-	1	1	1	1	5018030-1	NUT, HEX, REG, RoHS, M3	52
-	1	1	1	1	811242-5	BUMPER, HOLD DOWN	51
-	1	1	1	1	690753-2	SPACER, TONKER	50
-	-	-	1	2	18023-9	SCR, SKT HD CAP M4 X 6.0	49
-	-	-	-	1	2119652-1	FEED CAM, PRE FEED	48
-	1	1	1	1	2079383-7	SCR, BHSC, RoHS (M8 X 25)	41
-	1	1	1	1	2119645-1	DISC, NUMBERED FA WIRE ADJUSTMENT	40
-	1	1	1	1	2119957-1	APPLICATOR SHIM PACK	39
-	1	1	1	1	2119644-1	RAM WASHER, PRECISION	38
-	1	1	1	1	1752356-1	SUPPORT, TERMINAL	34
-	2	2	2	2	2079383-5	SCR, BHSC, RoHS (M4 X 20)	33
-	1	1	1	1	2161328-1	HEX HEAD, FLANGED, M5 X 8mm LONG	32
-	1	1	1	1	1320908-3	SPACER, STRIP GUIDE	30
-	1	1	1	1	2119959-1	ASSEMBLY, STRIP GUIDE	29
-	1	1	1	1	1-455888-0	SPACER, CRIMPER	28
-	1	1	1	1	1320928-6	STRIP GUIDE	24
-	1	1	1	1	2168083-2	SCR, SKT HD CAP, RoHS, M4 X 8.0	21
-	1	1	1	1	1-18028-2	WASHER, FLAT, REG M4	20
-	1	1	1	1	2119533-1	STRIPPER, SIDE FEED	19
-	1	1	1	1	2119806-1	INSERT, SHEAR	13
-	1	1	1	1	3-22280-3	SPRING, COMPRESSION	12
-	1	1	1	1	1-356885-4	STOP, SHEAR	11
-	1	1	1	1	2119805-1	SHEAR HOLDER, FRONT	10
-	1	1	1	1	462006-6	FLOATING SHEAR, FRONT	9
-	1	1	1	1	1-1633928-8	ANVIL, COMBINATION	8
-	1	1	1	1	5-240641-6	SPACER	7
-	-	-	-	-	-	-	6
-	1	1	1	1	2119757-8	DEPRESSOR, SHEAR	5
-	1	1	1	1	1-238011-9	BLOCK, CRIMPER SPACER	4
-	1	1	1	1	6-2119582-9	CRIMPER, INSULATION F PREMIUM	3
-	-	-	-	-	-	-	2
-	1	1	1	1	4-1633730-5	CRIMPER, WIRE	1

DIMENSIONS:		TOLERANCES UNLESS OTHERWISE SPECIFIED:		OWN	05FEB2013	TE Connectivity Harrisburg, PA 17105-3608
mm	0 PLC ±.1 1 PLC ±0.1 2 PLC ±0.2 3 PLC ±0.005 4 PLC ±0.0005 ANGLES ±.1	FINISH		CHK	06FEB2013	
MATERIAL		FINISH		APPD	06FEB2013	NAME
				PRODUCT SPEC		Ocean Side Feed Applicator
				APPLICATION SPEC		SIZE
				WEIGHT		CAGE CODE
				Customer Accessible Production Drawing	SCALE	DRAWING NO
					1:1	00779 C=2151868
						RESTRICTED TO
						SHEET 3 OF 4

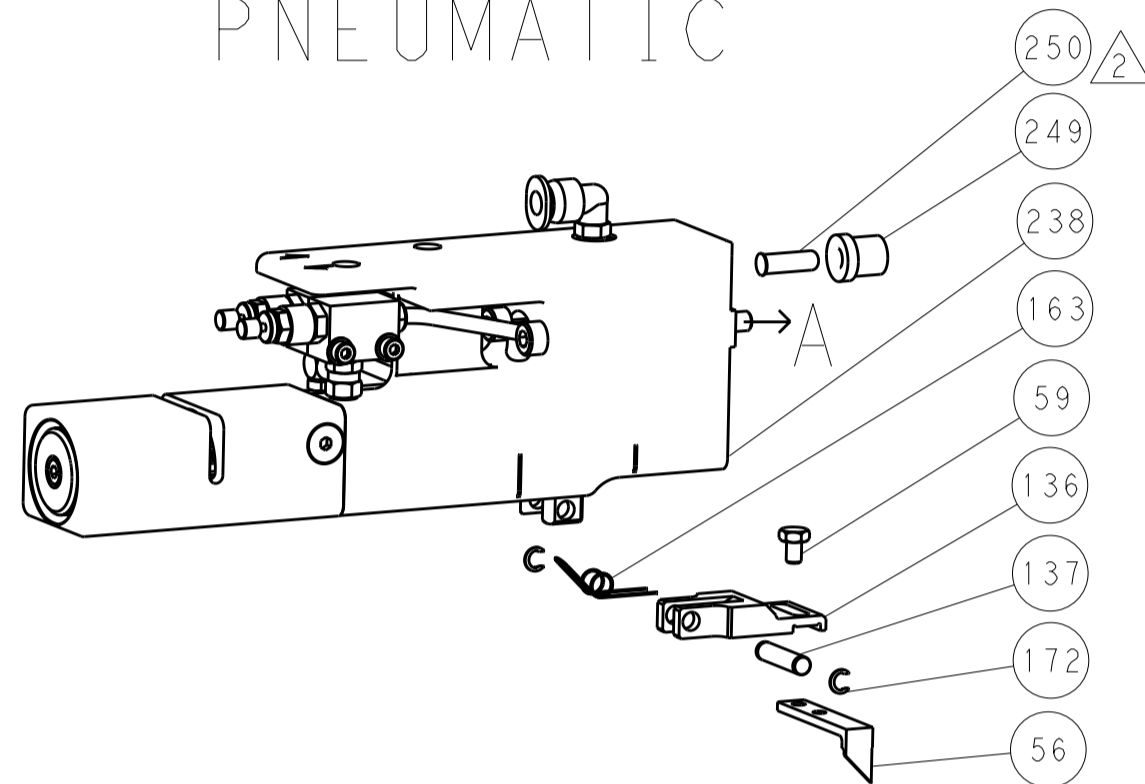
LOC		DIST		REVISIONS			
A	66	P	LTM	DESCRIPTION	DATE	OWN	APVD
		-	-	SEE SHEET 1	-	-	-

DIMENSIONING AND TOLERANCING PER ASME Y14.5M-2003

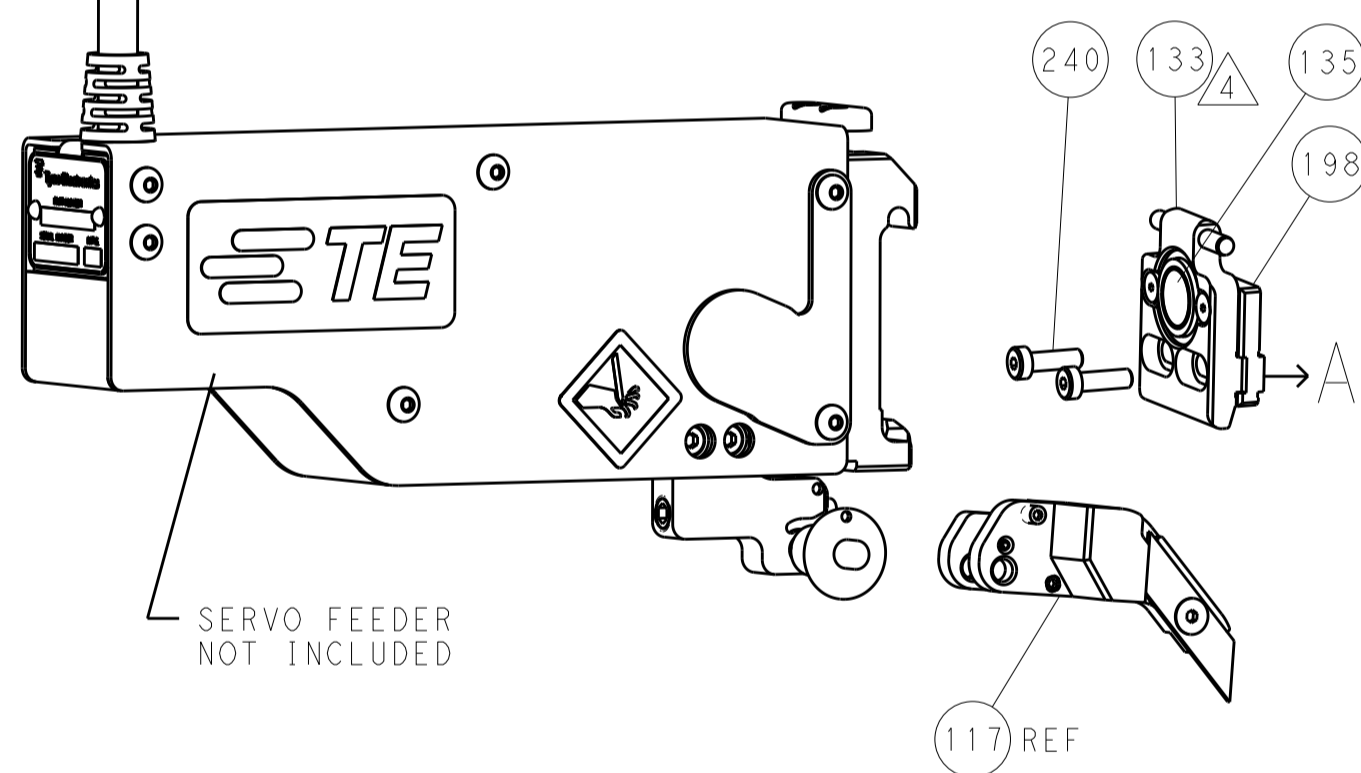
FEED TYPE MECHANICAL



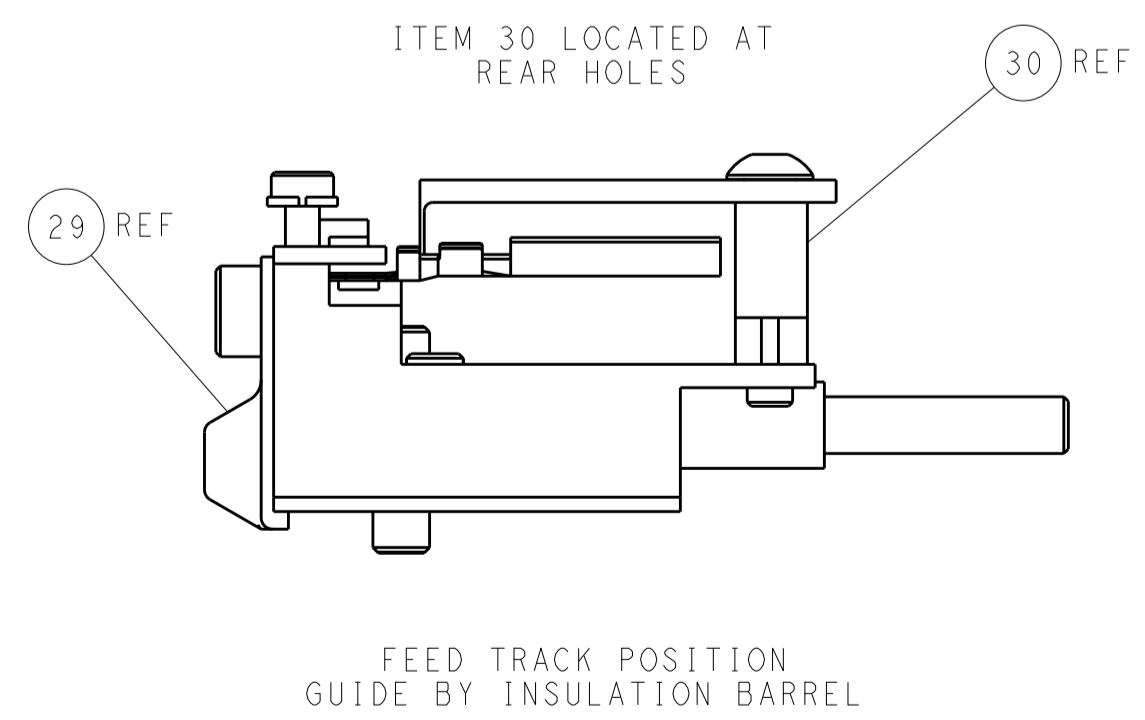
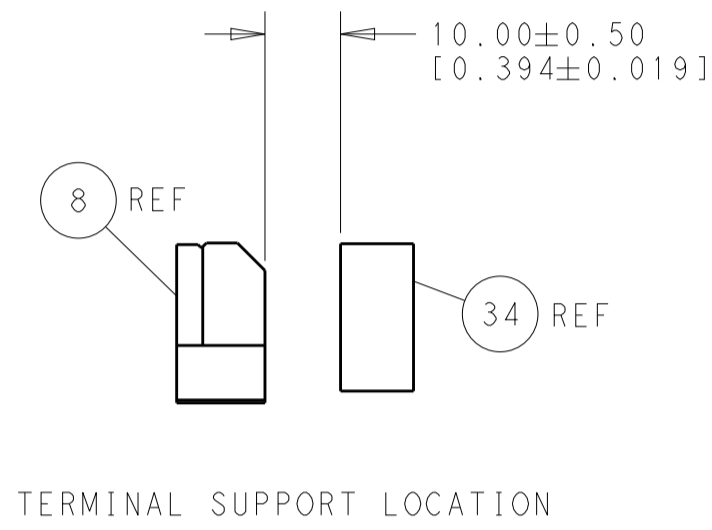
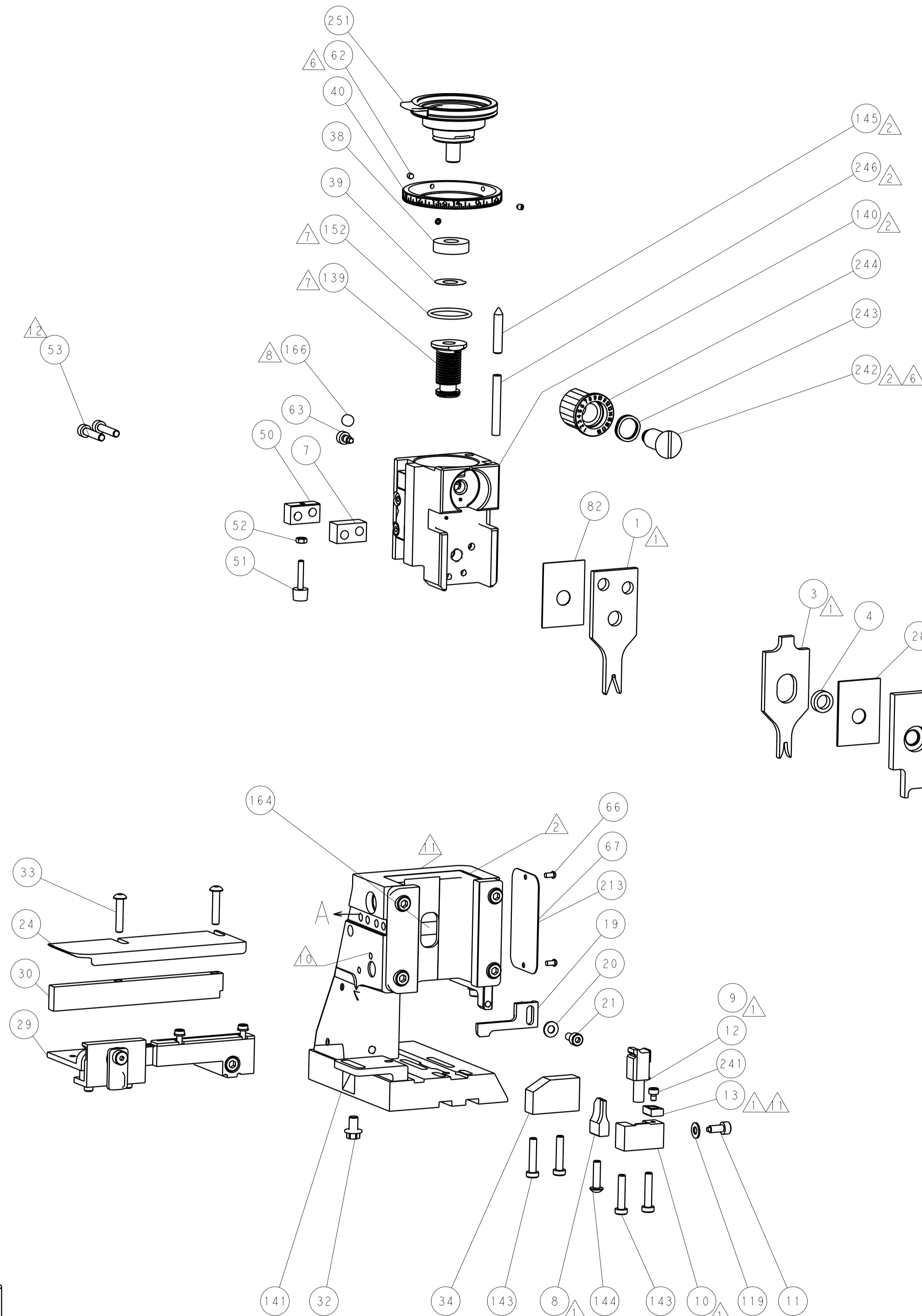
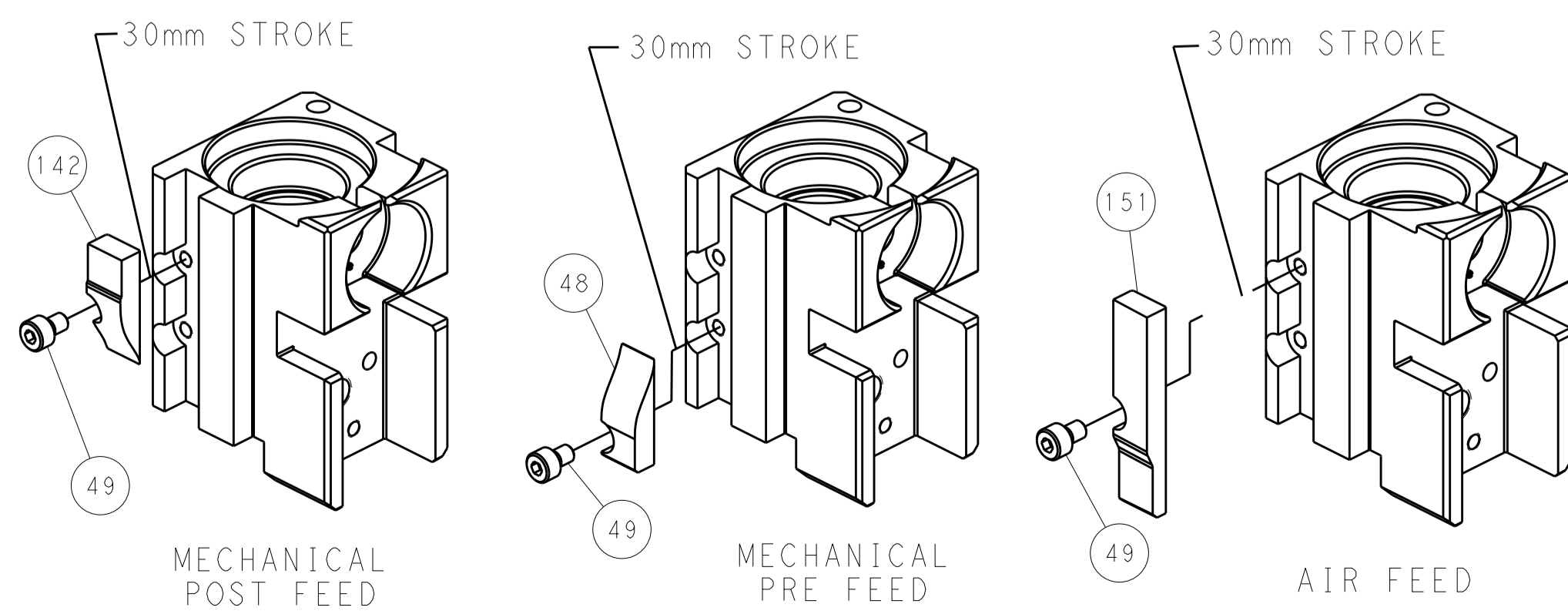
PNEUMATIC



SERVO LATCH PLATE



CAM POSITIONS



PACIFIC VERSION
 Shown on sheets 3 of 4 & 4 of 4
 (Atlantic version shown on sheets 1 of 4 & 2 of 4)

DIMENSIONS:		TOLERANCES UNLESS OTHERWISE SPECIFIED:		DWN: HOFFNER 05FEB2013		TE Connectivity	
mm	0 PLC ±0.1	1 PLC ±0.1	2 PLC ±0.02	3 PLC ±0.005	4 PLC ±0.0005	ANGLES ±	FINISH
MATERIAL:							
Customer Accessible Production Drawing				SCALE: 1:1	SHEET: 4	OF: 4	REV: B1