

PART NAME: KNOB SCALE: 1:1 DATE: 7/20/45 DR. BY HAC

DAVIES MOLDING COMPANY
CAROL STREAM, ILLINOIS 60188

P/N 1450-A

THIS DRAWING IS THE PROPERTY OF DAVIES MOLDING COMPANY, IS SUBMITTED SOLELY AS A DESIGN OR ENGINEERING PROJECT. WE ACCEPT NO RESPONSIBILITY WHATSOEVER FOR THE PRACTICAL APPLICATION OF THE PIECES MADE TO THIS DESIGN.

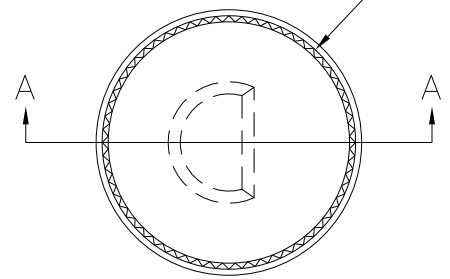
BASE PART 1450-01

SPRING 11125A

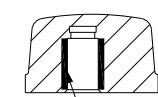
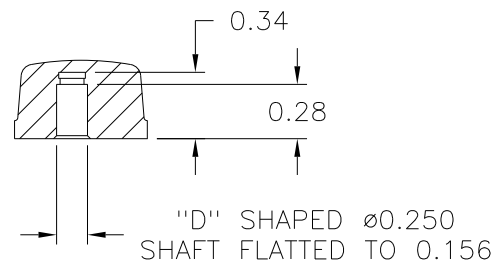
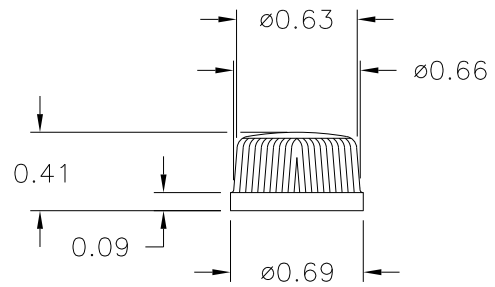
SCALE 2:1

KNURL 60 SEPRATION
EQUALLY SPACED AT 6° APART

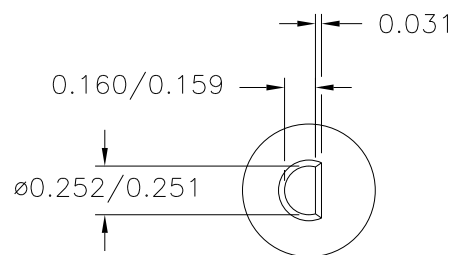
©



SECTION A-A



(A) (B)
"D" SHAPED SPRING 11125A
TO FIT STANDARD ø0.250
SHAFT FLATTED TO 0.156



MATERIAL: G.P. PHENOLIC (B11)
COLOR: BLACK

| | | | |
|---|----------------------------------|----|---|
| | UPDATED/HAD TOOLBOX | ST | 7/24/2000 |
| TOLERANCES: UNLESS OTHERWISE SPECIFIED | DO NOT SCALE DRAWING | C | SET-UP REVISED, WAS M-1450, PIN WAS 1450-4, SPRING WAS 10376 |
| DECIMALS: X.XXX ± .005 X.XX ± .015 | MM: X.XX ± 0.15MM X.X ± 0.4MM | B | WAS 10182 |
| FRACTIONS ± 1/64 | ANG. ± 1° | A | WAS 10049 |
| CHANGES | | | |