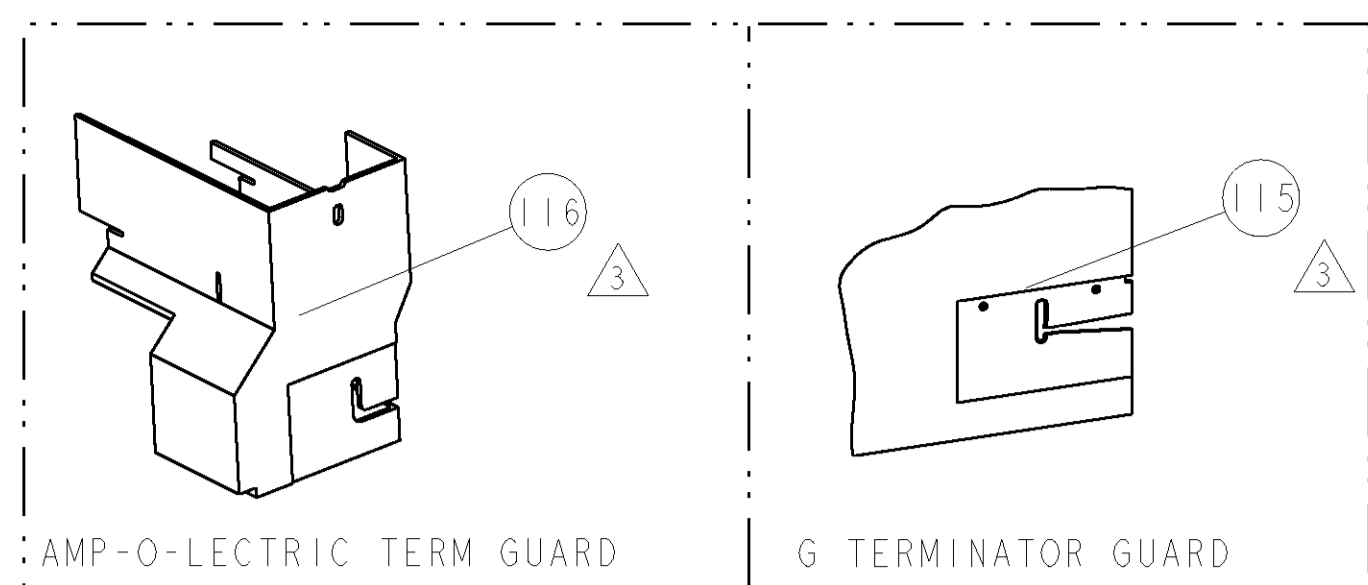


PART NUMBER	REV	FIRST USED	POWER UNIT	FEED TYPE	DESCRIPTION
1855366-1	A	122500-1	LEADMAKER	POST FEED	CUTS CARRIER
1855366-2	B	565435-5	BENCH MODEL K	PRE FEED	CUTS CARRIER
1855366-3	B	354500-1	BENCH MODEL G	PRE FEED	CUTS CARRIER
1855366-6	A	122500-1	LEADMAKER	POST FEED	CONTINUOUS CARRIER
7-1855366-7	A	-	-	-	SPARE PARTS

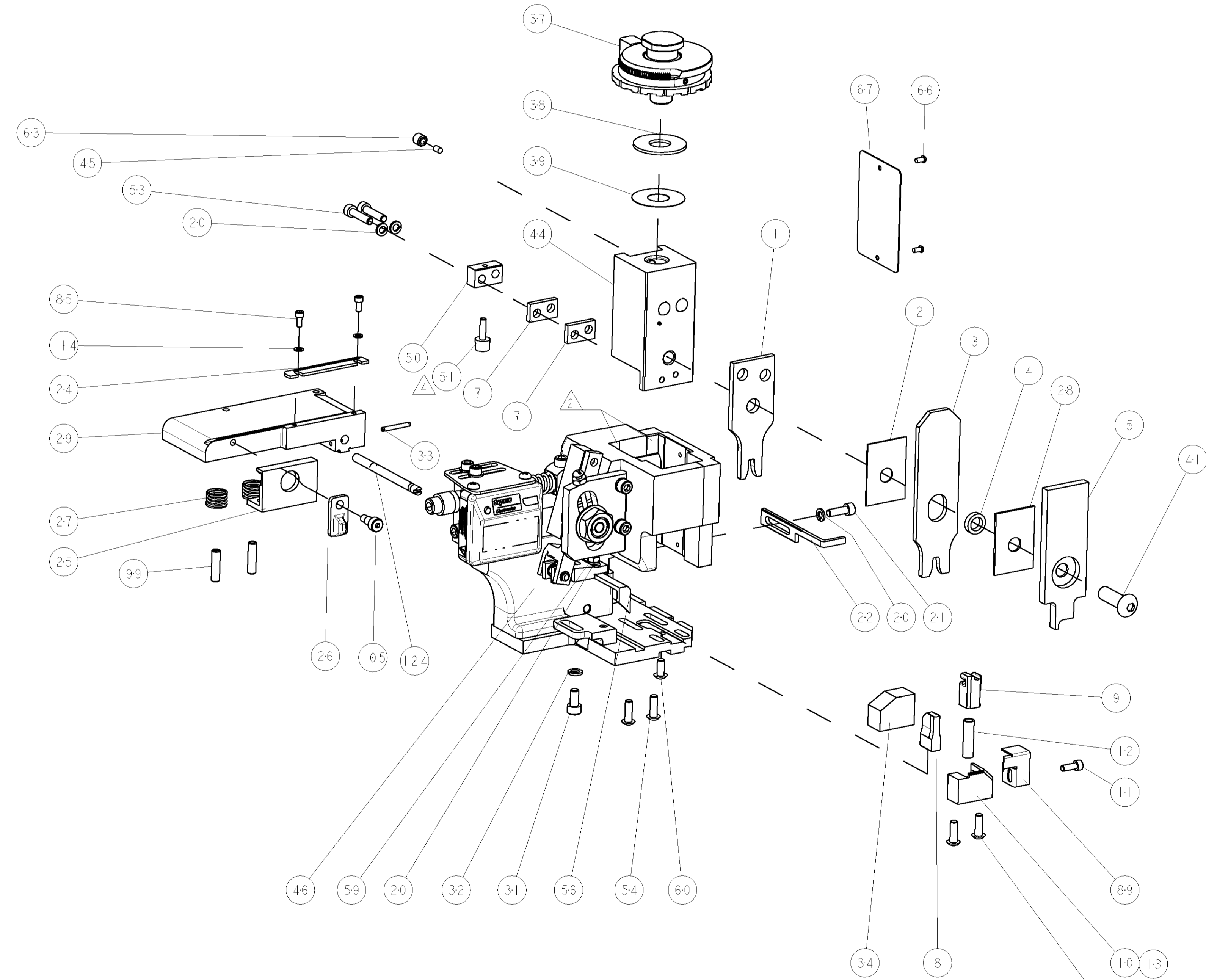


TE PN		COMP PN	GHW/LEAR TERMINAL - TE CRIMP SPECS		REF SETTING
1949608-1	26407.212.179		CRIMP HEIGHT	WIRE SIZE	
-	-	-	2.08±0.05mm [.082±.002]	16AWG or 1.25mm ² CAPILLARY WIRE	C4
-	-	-	CRIMP	SIZE	TYPE
-	-	-	WIRE	3.81mm [.150]	F
-	-	-	INSUL	4.32mm [.170]	F
-	-	-	FEED	19.05mm	
WIRE STRIP LENGTH	TERM APPL SPEC	FEED	APPLICATOR INSTRUCTIONS	SET UP GAGE	
4.93-5.31	NONE	19.05mm	408-8040	458637-1	

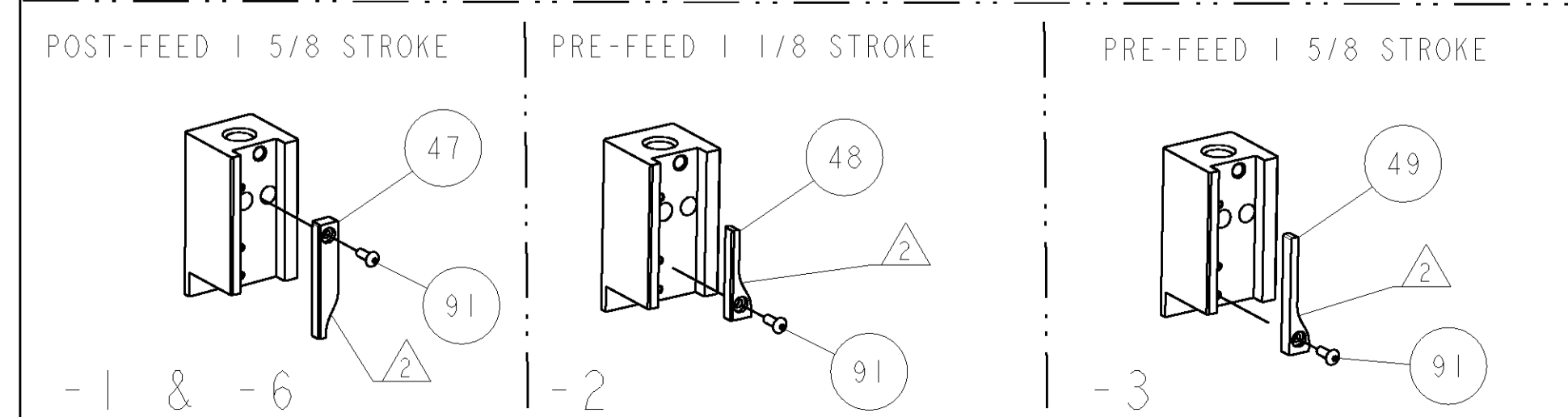
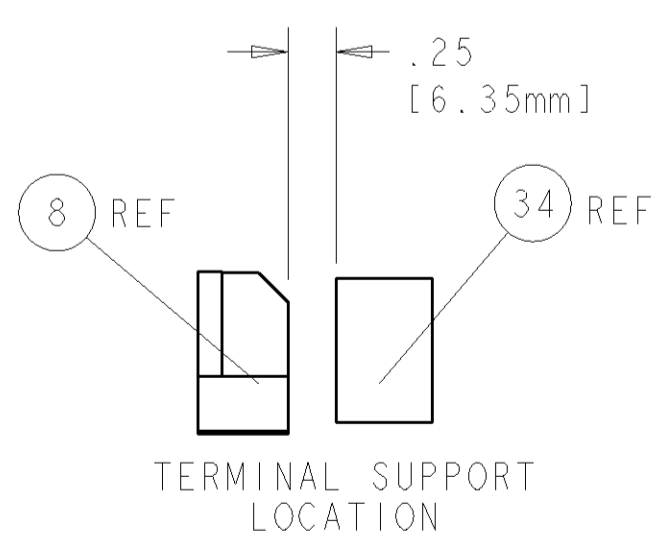
LOC	DIST	REV	DESCRIPTION	DATE	BY	APPV
A	66	A	RELEASED	18FEB2008	BH	BH
		B	ECR-08-016063	25JUN2008	MY	GB

- △ RECOMMENDED SPARE PARTS
- △ GREASE LIGHTLY
- △ GUARD MUST BE IN PLACE WHEN OPERATING APPLICATOR IN A BENCH MACHINE
- △ LOC-TITE AT ASSEMBLY.

*** WARNING**
ON INSTALLATION, SET WIRE DISC TO LARGEST WIRE SIZE SETTING. USE OF SETTINGS BELOW MIN. REQUIRED CRIMP HEIGHT SETTING WILL CAUSE DAMAGE TO CRIMP TOOLING.



690432-3	ADJUSTMENT SCREW	124
455749-1	GUARD WINDOW	116
679532-1	INSERT, GUARD	115
21024-2	WASHER, SPRG LOCK, REG NO 4	114
21989-8	SCR, SKT HD SHLDR 3/16 DIA X .250	105
5-21006-6	SCR, SET, CUP POINT 10-32 X .750	99
1-21002-7	SCR, BTN SKT HD CAP 6-32 X .375	91
318563-1	GUARD, FRONT CHIP	89
1-21000-3	SCR, SKT HD CAP 4-40 X .250	85
4088040	SF APPL INST 408-8040	72
217238-1	GENERAL INSTRUCTION PKG	71
461264-5	PLATE, IDENTIFICATION	67
21017-2	SCREW, DRIVE	66
21009-2	SCR, SET, SELF LOCKING 1/4-20 X .250	63
22733-8	SCR, BHSC, SELF-LOCKING, 8-32 X .375	60
2-22603-0	SCR, HEX HD CAP 8-32 X .312	59
3-694433-0	FEED PAWL	56
2-21002-2	SCR, BTN SKT HD CAP 8-32 X .500	54
2-21000-9	SCR, SKT HD CAP 8-32 X .750	53
811242-8	BUMPER, HOLD DOWN	51
690753-1	SPACER, TONKER	50
690602-6	CAM, PRE FEED, 1 5/8	49
690602-5	CAM, PRE FEED, 1 1/8	48
690501-4	CAM, POST-FEED 1 5/8	47
459456-2	APPL. BASIC SUB ASSY (SIDE WISE MOCA)	46
690191-1	PLUG, NYLON	45
1-455673-4	RAM, SIDE FEED	44
7-21002-9	SCR, BTN SKT HD CAP 5/16-24 X 1.00	41
690125-1	SHIM SUB-ASSY	39
1-469367-4	SHIM	38
879103-3	FINE ADJUST HEAD ASSEMBLY	37
690786-6	TERMINAL SUPPORT	34
4-21028-0	PIN, SLOTTED SPRING .094 X .750	33
21024-5	WASHER, SPRG LOCK, REG NO 10	32
3-21000-4	SCR, SKT HD CAP 10-32 X .375	31
3-458144-4	PLATE, STRIP GUIDE	29
1-455888-0	SPACER, CRIMPER	28
1-22284-0	SPRING, COMPRESSION	27
356835-1	LEVER, DRAG RELEASE	26
240792-1	DRAG, TERMINAL	25
690438-1	FRONT STRIP GUIDE	24
2-690472-0	STRIPPER	22
2-21000-7	SCR, SKT HD CAP 8-32 X .500	21
21024-4	WASHER, SPRG LOCK, REG NO 8	20
679625-1	SHEAR HOLDER, FRONT (NO CUT)	13
3-22280-3	SPRING, COMPRESSION	12
1-21000-9	SCR, SKT HD CAP 6-32 X .375	11
690459-1	SHEAR HOLDER, FRONT	10
217234-2	FLOATING SHEAR, FRONT	9
9-1633117-1	ANVIL, COMBINATION	8
240641-5	SPACER	7
-	-	6
2-455889-0	DEPRESSOR, SHEAR	5
238011-2	BLOCK, CRIMPER SPACER	4
3-1213077-3	CRIMPER, INSULATION PREMIUM	3
455888-6	SPACER, CRIMPER	2
4-1490019-5	CRIMPER, WIRE PREMIUM	1



INCHES	TOLERANCES UNLESS OTHERWISE SPECIFIED:	DRAWN	DATE	REV	DESCRIPTION	ITEM NO
0 PLC	±	B. HIGMAN	27JAN2008			
1 PLC	±0.1	B. HIGMAN	27JAN2008			
2 PLC	±0.01					
3 PLC	±0.001					
4 PLC	±0.0001					
ANGLES	±0.0001					
MATERIAL	FINISH	APPROV	DATE	NAME	PRODUCT SPEC	
-	-	T. ELBIN	27JAN2008	Tyco Electronics		
				Tyco Electronics		
				Harrisburg, PA 17105-3608		
				NAME		
				FINE ADJUST SIDE FEED		
				HDM APPLICATOR		
				APPLICATION SPEC		
				SIZE		
				A 1 00779		
				SCALE		
				3:5		
				SHEET		
				1 OF 1		
				REV		
				B		

CUSTOMER VIEWABLE ASSEMBLY