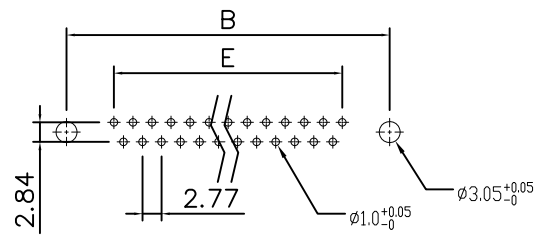
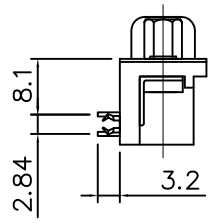
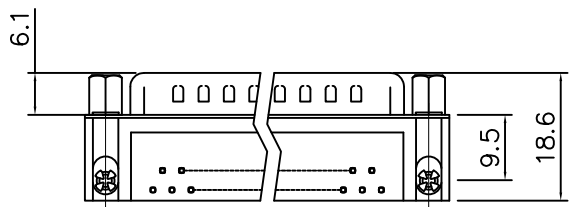
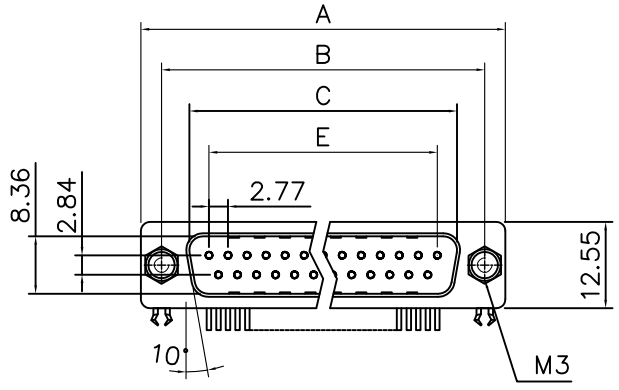


This document is the property of Amphenol Corporation and is delivered on the express condition that it is not to be disclosed, reproduced or used, in whole or in part, for manufacture or sale by anyone other than Amphenol Corporation without its prior consent, & that no right is granted to disclose or to use any information in this document.

# Customer drawing



RECOMMENDED P.C.B LAYOUT  
TOLERANCE:  $\pm 0.05\text{MM}$



## Dimensions

Shell Size	Positions	A	B	C	E
E	9	30.81	24.99	16.92	11.08
A	15	39.20	33.30	25.25	19.39
B	25	53.05	47.04	38.96	33.24
C	37	69.40	63.50	55.42	49.86

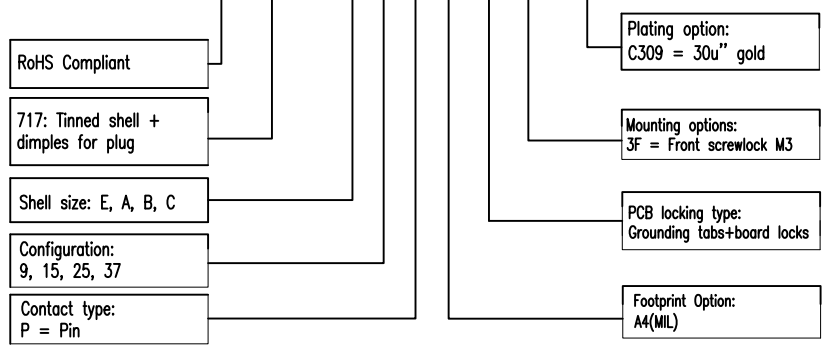
REVISIONS				
SYM	ECN	DESCRIPTION	DATE	APPROVED
1	HK--	First Release Drawing	04/11/19	IP

## D-SUB TECHNICAL DATA

SHELL : Steel, 100u" min Tin over 50u" min Nickel over 50u" min Copper  
 BODY : PBT, UL 94V-0, Color:Black.  
 CONTACTS : Copper alloy  
 30u" Gold over 50u" min nickel on mating area  
 100u" min tin over 50u" min nickel on solder area  
 BOARDLOCK: Copper Alloy, Tin Plated.  
 REAR RIVET: Copper Alloy, Nickel Plated.  
 SCREWLOCK: Copper Alloy, Nickel Plated.  
 ELECTRICAL : Voltage rating 250 VAC (RMS)  
 Current Rating 3 AMP  
 Withstanding Voltage >1000 VAC(RMS)  
 Insulation resistance >1000 M Ohms  
 Contact resistance 20 mOhms max  
 MARKING : Amphenol...(Series No.)  
 Commercial reference  
 Manufacturing date

## PRODUCT CODE

L 717 SD X XX P A4 CH 3F C309



UNLESS OTHERWISE SPECIFIED TOLERANCES		APPROVAL		DATE
U.S.	METRIC	DRAWN	Simon.Chen	04/11/19
.X +/-	0.50	CHECKED	Tony.Tang	04/11/19
.XX +/-	0.30	CHECKED		
.XXX +/-	0.20			
FRACTIONS +/-				
ANGLES +/-	5°			
FOR MATERIALS AND FINISHES SEE NOTES		DRAWING FILE :		
REMOVE SHARP EDGES		ANGLE OF PROJECTION		
DIMENSIONS				
U.S. INCHES				
METRIC MM				

Amphenol		
D-SUB, R/A series		
SIZE	DRAWING NO.	REV.
A4	L717SDXXXPA4CH3FC309	1
SCALE	NONE	SHEET 1 OF 1